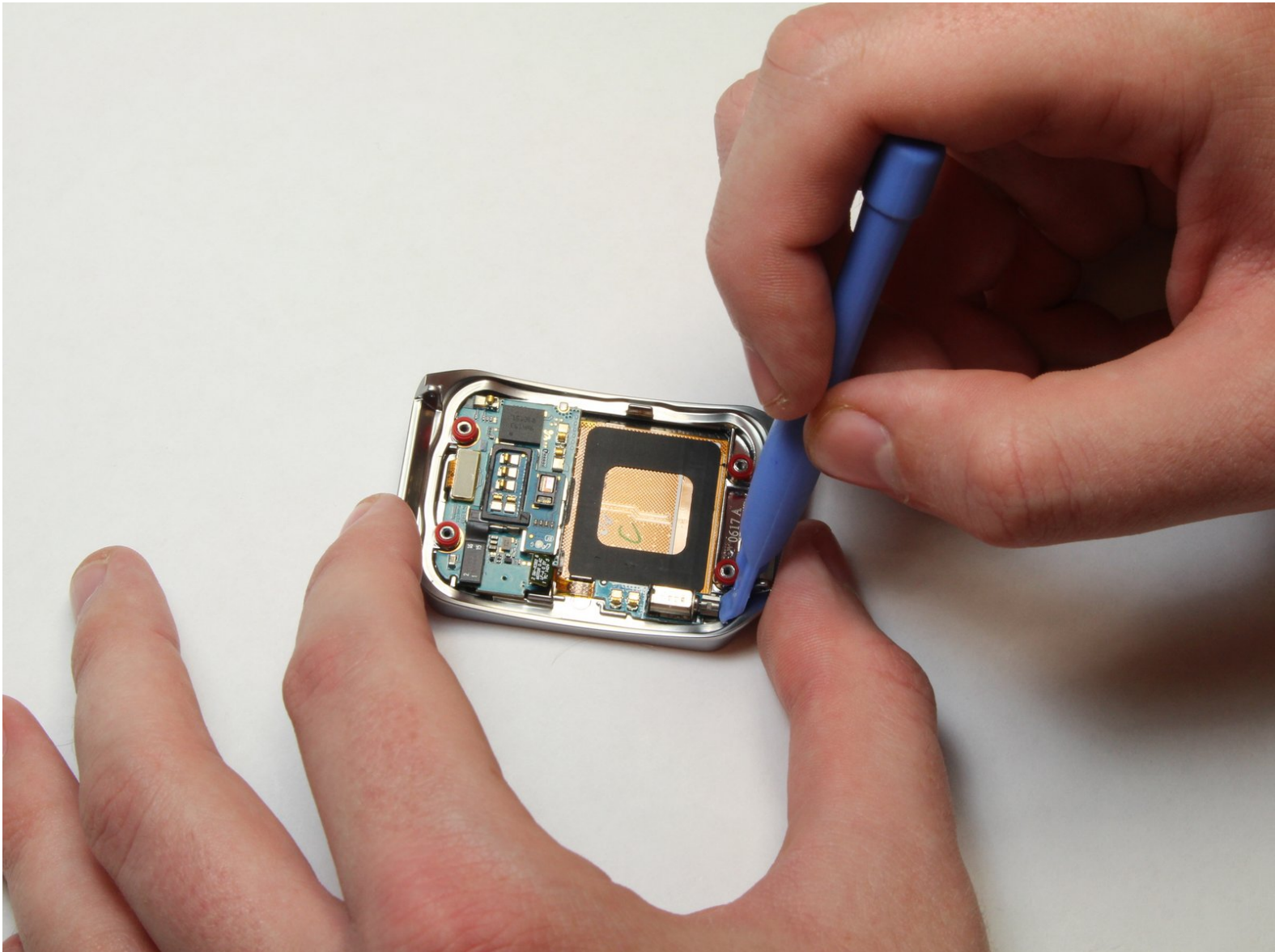




Samsung Gear Live Vibrator Motor Replacement

This guide will show you how to replace the vibrator motor on the Samsung Gear Live.

Written By: Keith Cooper



INTRODUCTION

The vibrator motor is what allows your watch to vibrate to indicate incoming calls, texts, etc. An offset weight on the shaft of the motor causes it (and in turn, the watch) to vibrate when the motor spins. If your watch is set to vibrate and the vibration feature fails to function, you may need to replace the motor.



TOOLS:

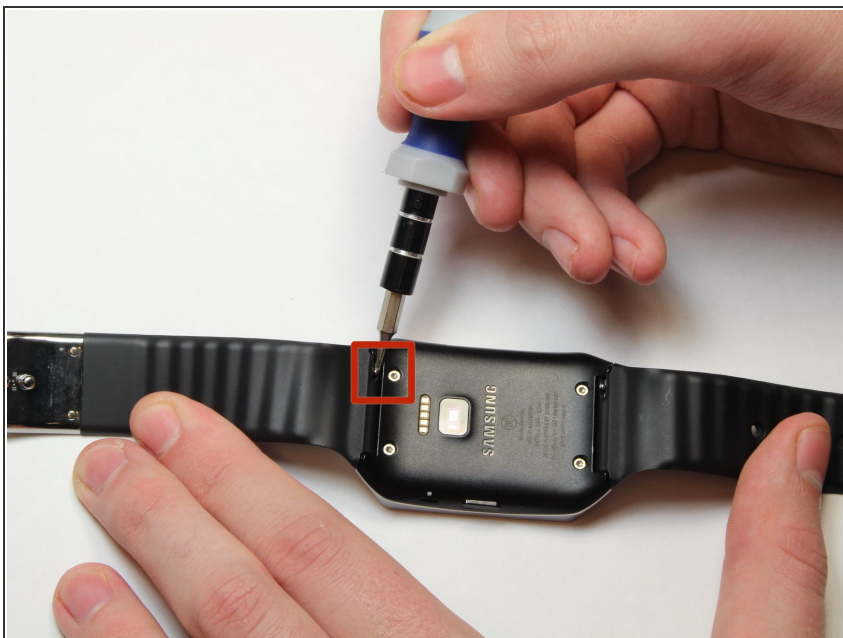
- [Flathead 3/32" or 2.5 mm Screwdriver](#) (1)
 - [iFixit Opening Tools](#) (1)
 - [T5 Torx Screwdriver](#) (1)
-

Step 1 — Lay the watch face-down



- Lay the watch face-down on a flat, stable surface.

Step 2 — Remove the holding pin



- Press the watchband down against the work surface.
- Press the tip of a flathead screwdriver against the edge of the spring-loaded holding pin.

Step 3 — Remove the watchband



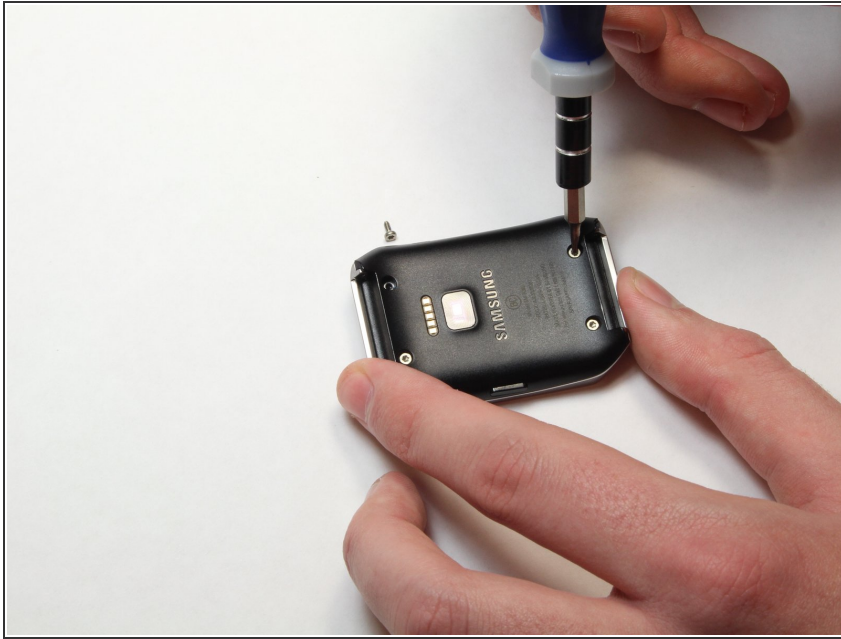
- With the spring-loaded pin pressed in, the watch band should release easily.
- Gently pull the band away from the body of the watch.
- Repeat steps 2 and 3 for the opposite side.

Step 4 — Locate the four screws



- With the watch laying face-down, locate the four screws. They are located on the back of the watch, at the four corners.

Step 5 — Remove the 4 screws



- Using a Torx-T5 screwdriver, remove each of the four 4mm screws and set them aside.

Step 6 — Pry off the back of the watch.



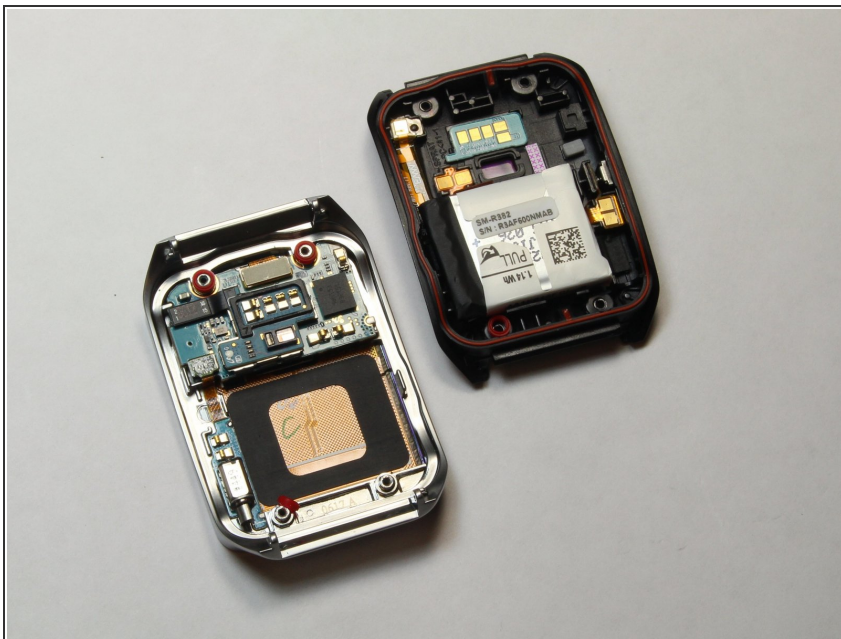
- Gently work the plastic opening tool under the top edge of the watch's back cover.

Step 7 — Lift off the back cover



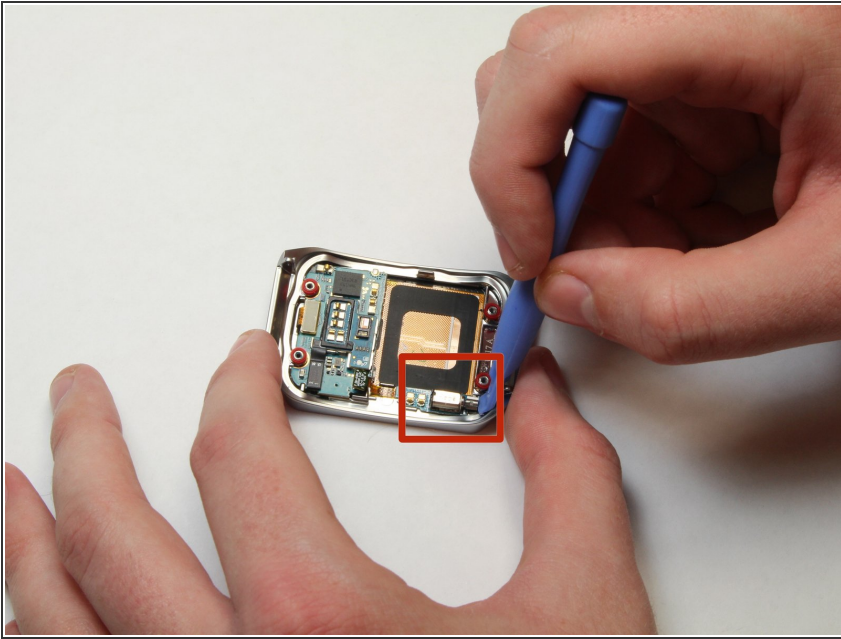
- With the watch's back cover pried loose, gently lift it away from the front half of the watch.

Step 8 — Set both halves of the watch aside



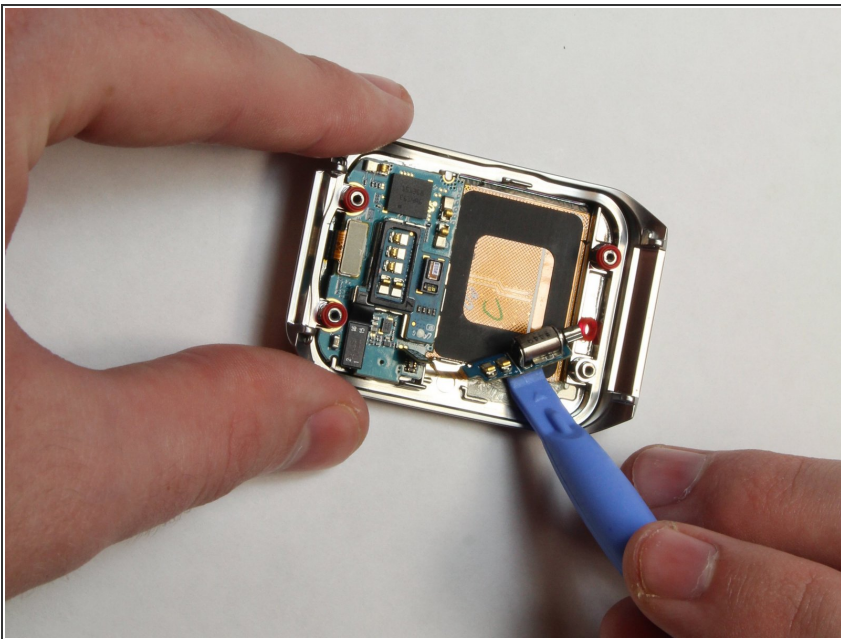
- Lay both halves of the watch body assembly face down (with internal components facing up).

Step 9 — Locate the vibrator motor



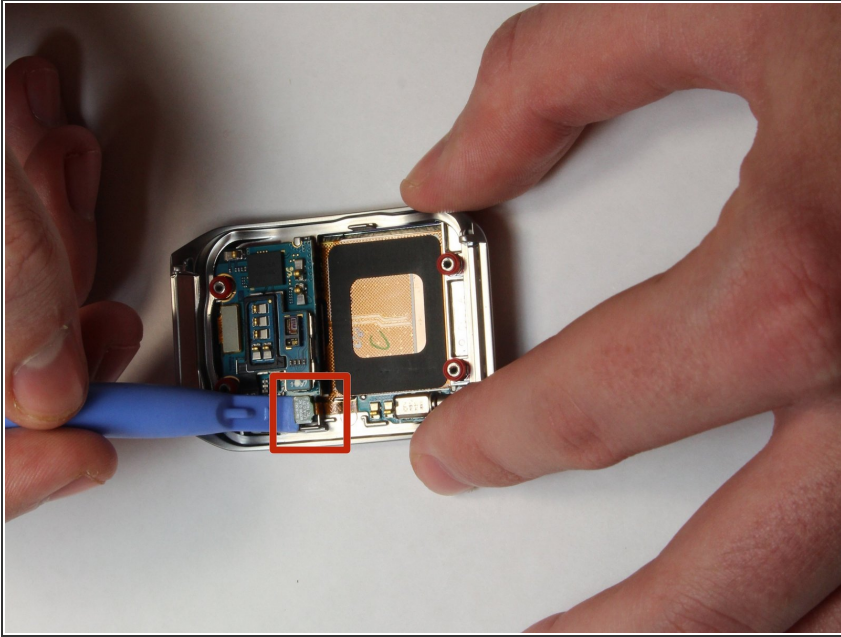
- Locate the vibrator motor on the front half of the disassembled watch. It is located in the corner, at the end opposite the green circuit board.

Step 10 — Pry up the motor



- Using the plastic opening tool, gently pry up the motor.

Step 11 — Pry up the motor contacts



- Using the plastic prying tool, gently pry away the motor's contacts and ribbon cable from the watch assembly

To reassemble your device, follow these instructions in reverse order.