



Toshiba Satellite 1415-S105 CPU Fan and Heatsink Replacement

Replacement instructions for the Toshiba Satellite 1451 CPU fan and heatsink.

Written By: Kiril Lange



INTRODUCTION

An overheating laptop, or an always on noisy fan, can be caused by a clogged heatsink, clogged fan, broken fan, or bad thermal paste.

This procedure is similar to the Satellite 1410.



TOOLS:

- [Phillips #0 Screwdriver](#) (1)
- [iFixit Opening Tools](#) (1)
- [Q-Tips](#) (5)
- [Isopropyl Alcohol](#) (1)



PARTS:

- [Arctic Silver Thermal Paste](#) (1)

Step 1 — Battery



- The battery is located on the front right corner of the laptop.

Step 2



- With one finger on the raised grip, slide the latch towards the front of the laptop.

Step 3



- Pull the battery out towards the side.



Step 4



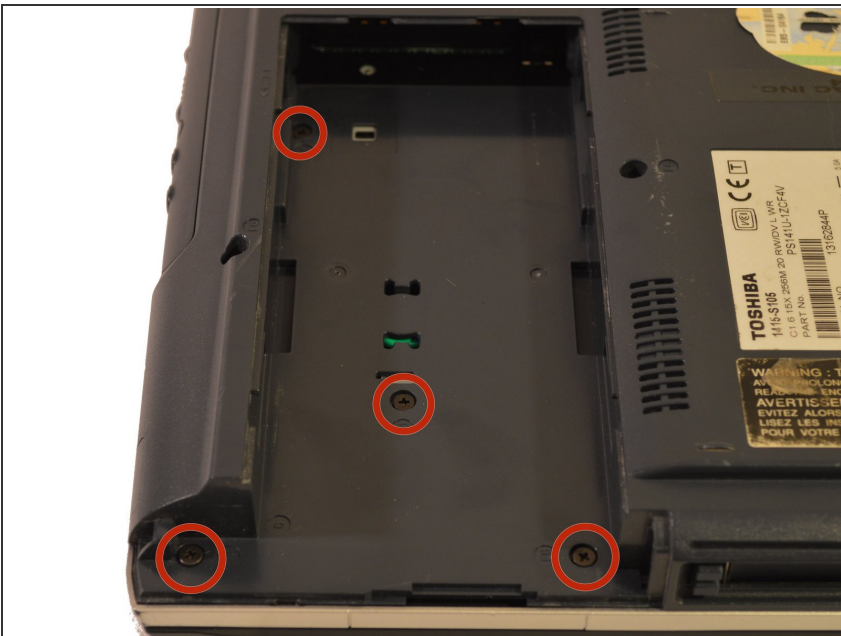
- Lift the battery straight up, out of the computer.

Step 5 — Lower Case



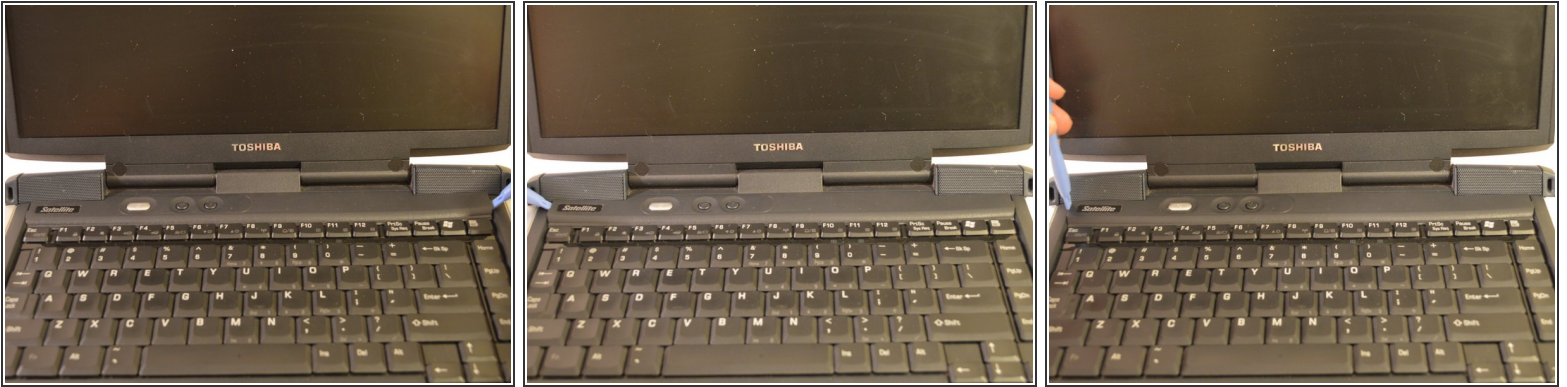
- Unscrew all of the visible screws on the bottom of the laptop.
-  The screws circled are not necessary to remove.
-  Keeping track of which hole each screw goes in will speed up reassembly.

Step 6



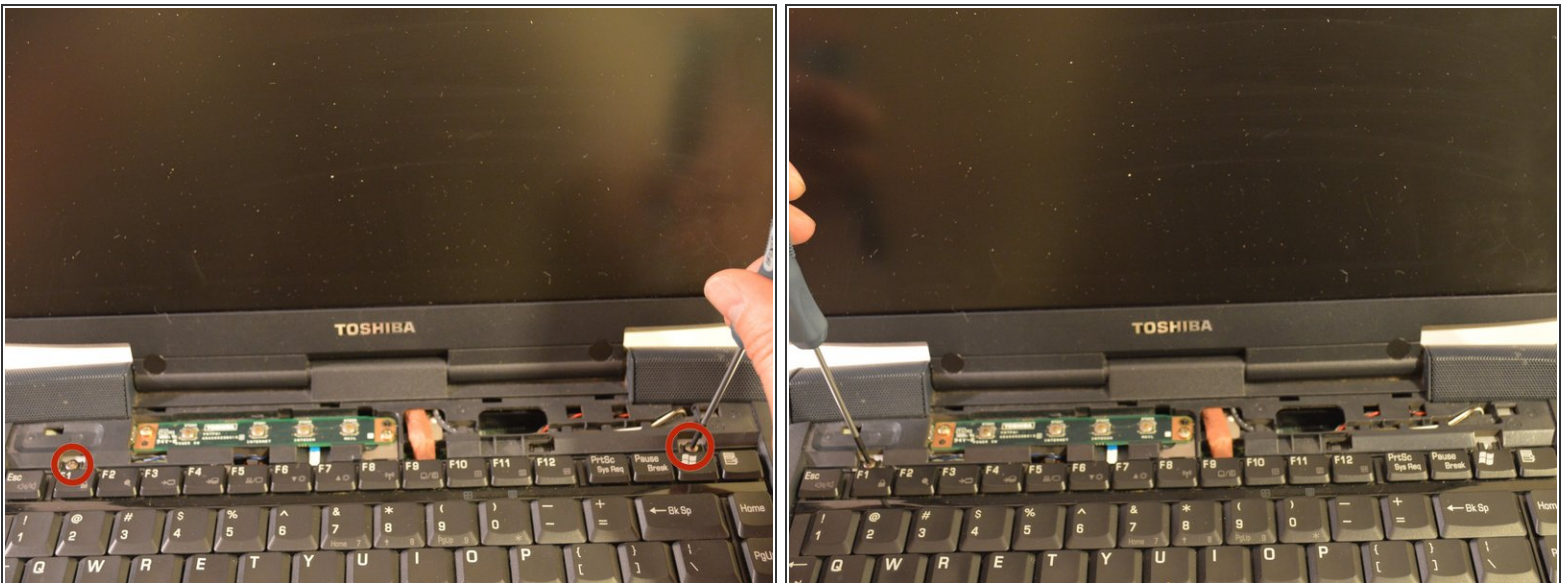
- Unscrew the screws located beneath the battery.

Step 7 — Keyboard



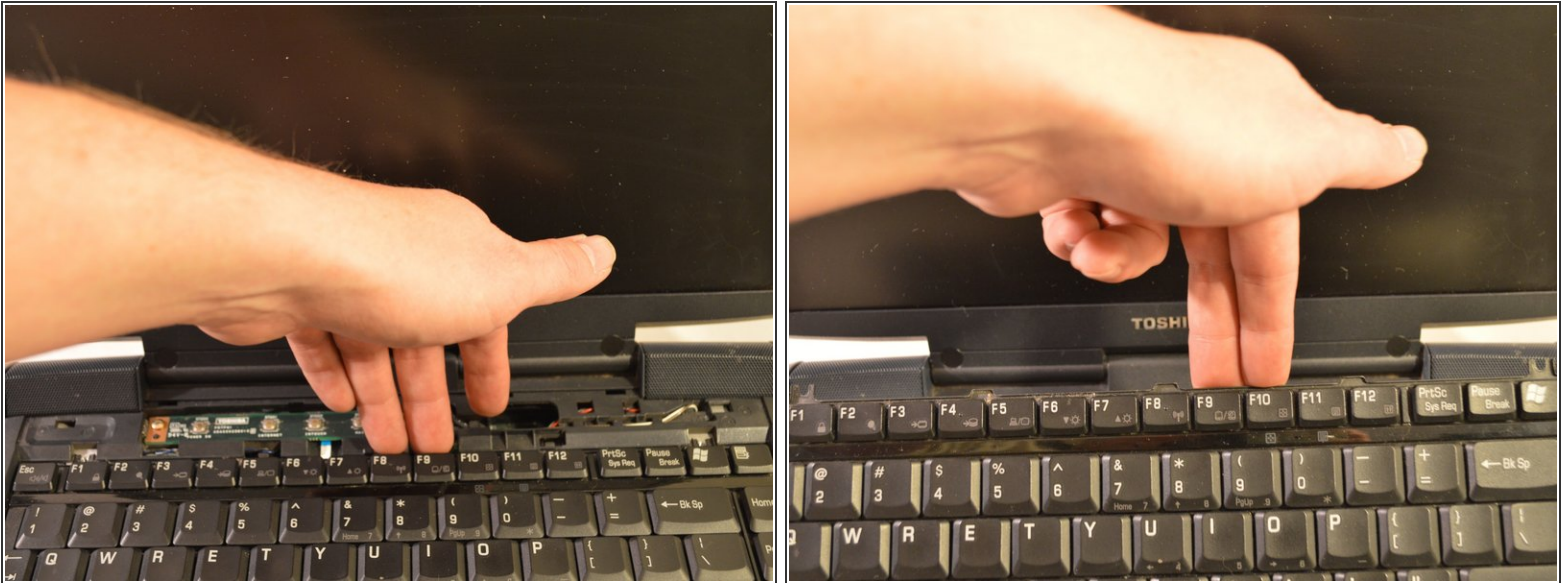
- Using a set of case opening tools, pry open the left and right sides of the black plastic strip above the keyboard.
- Fully detach the strip.

Step 8



- Unscrew the two screws near the top of the keyboard.

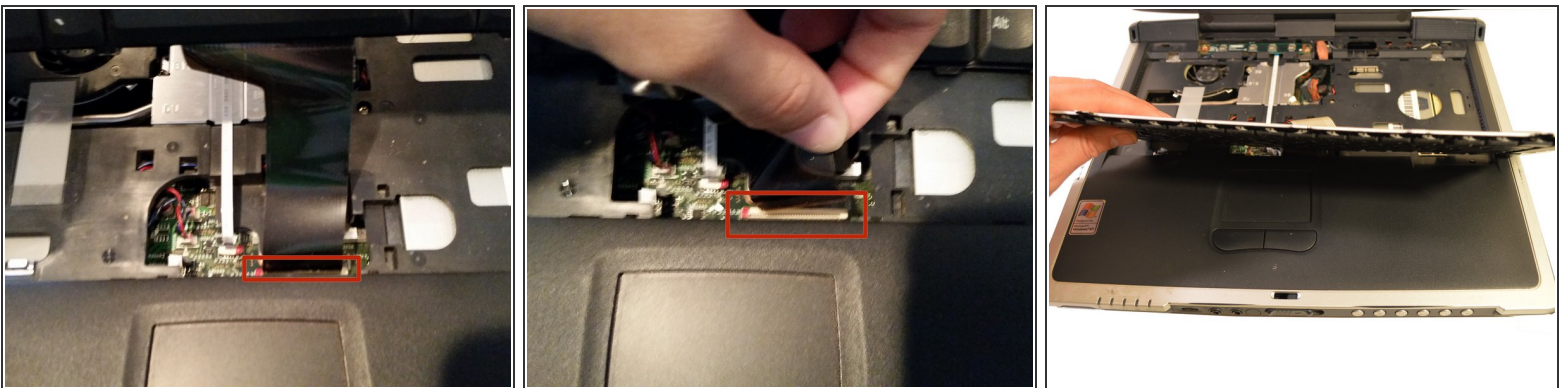
Step 9



- Lift the keyboard by holding the middle top of the keyboard.

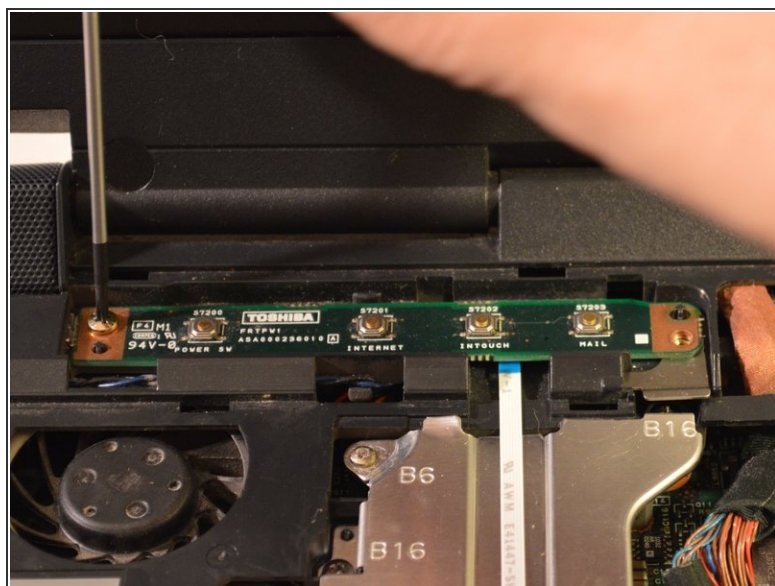
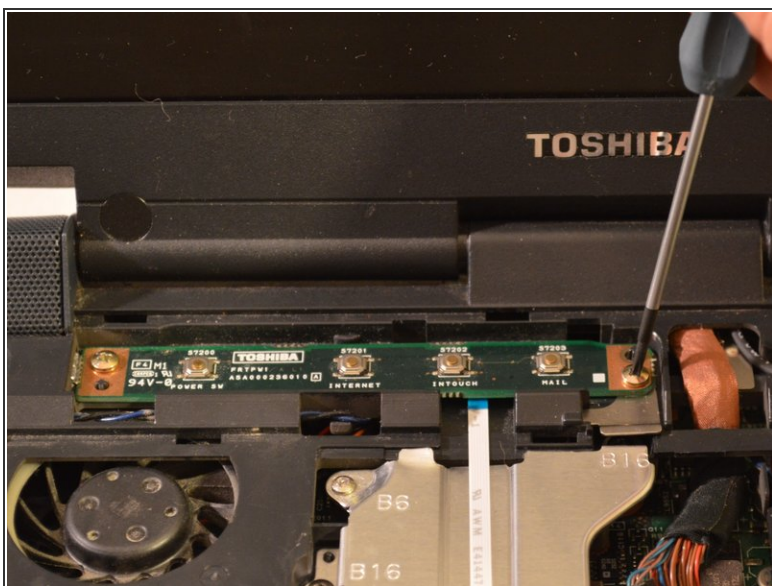
⚠ The keyboard is still connected by a ribbon cable to the motherboard.

Step 10



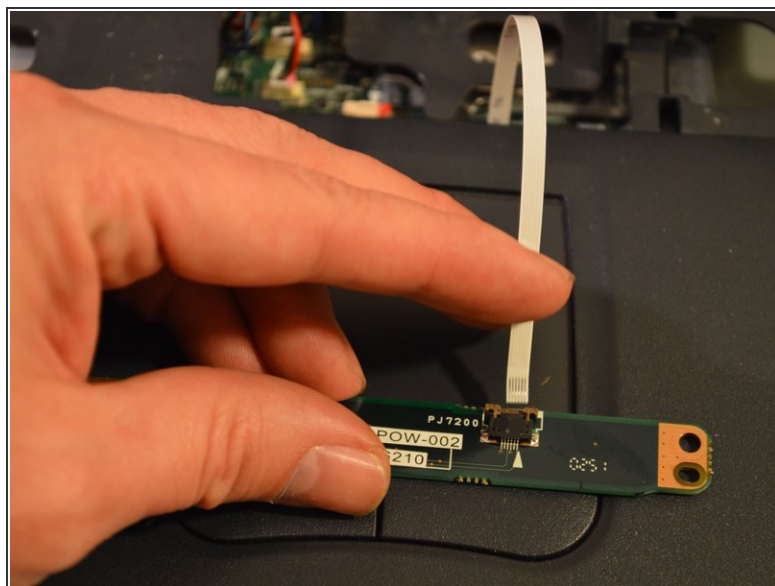
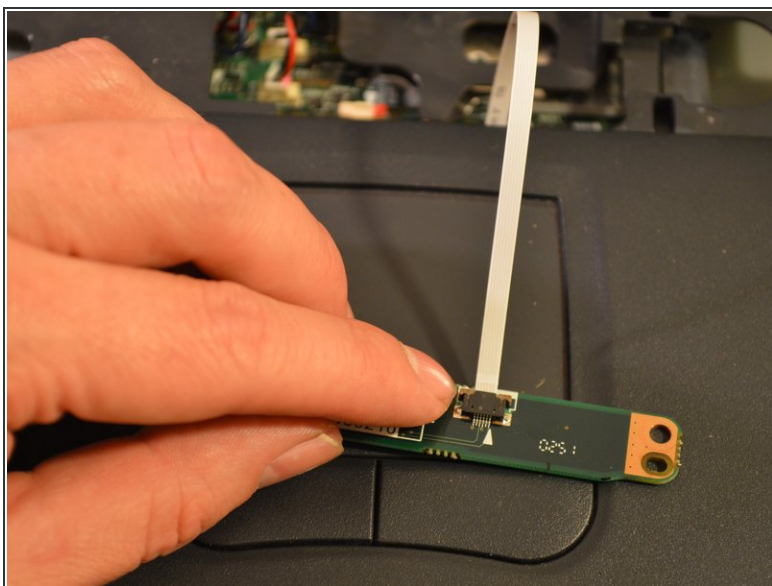
- Carefully pull upwards on the ribbon cable to detach.
- Remove keyboard.

Step 11 — Power Button Circuit Board



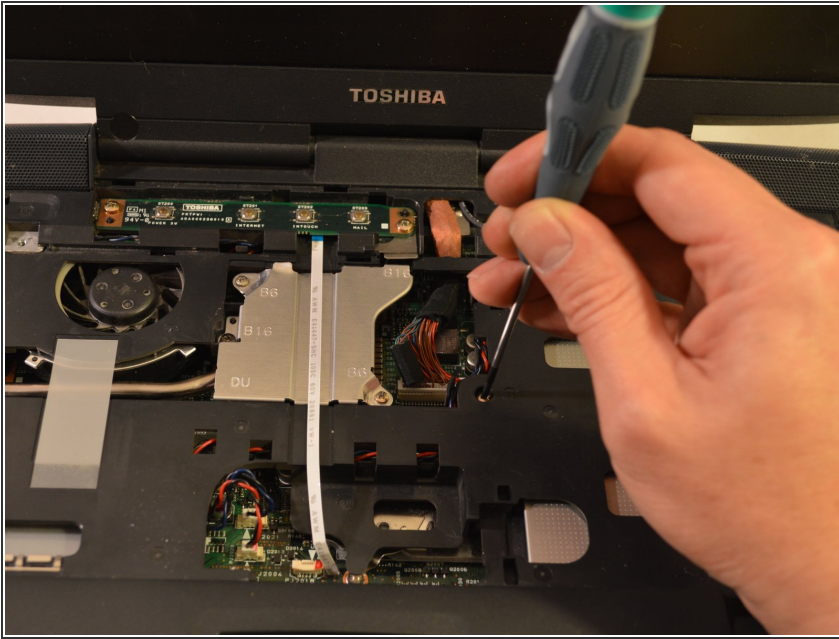
- Unscrew the screws on either side of the power button circuit board.

Step 12



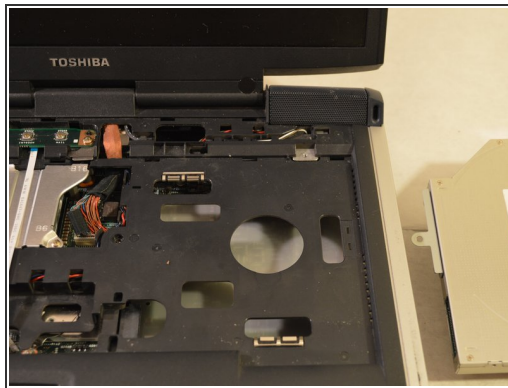
- Pull upward on the small white ribbon cable to detach from circuit board.

Step 13 — Optical Drive



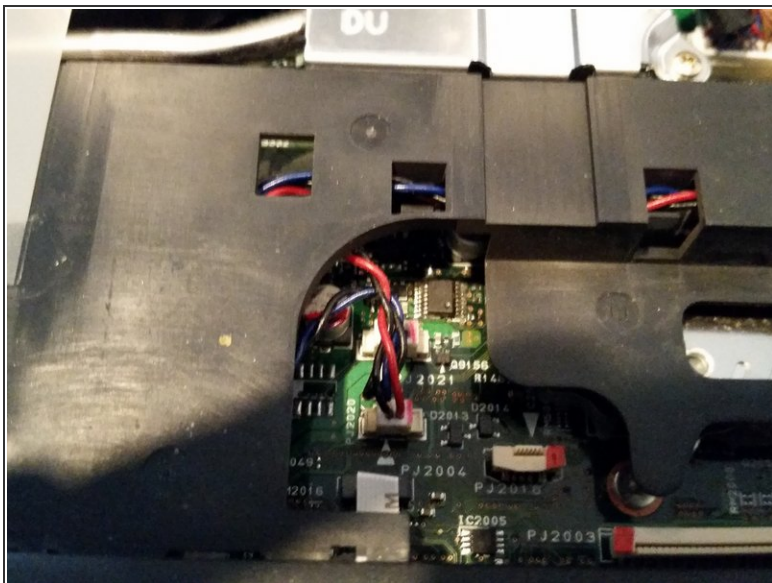
- Unscrew the screw located on the left side of the optical drive near the heat sink cover in the middle of the laptop.

Step 14



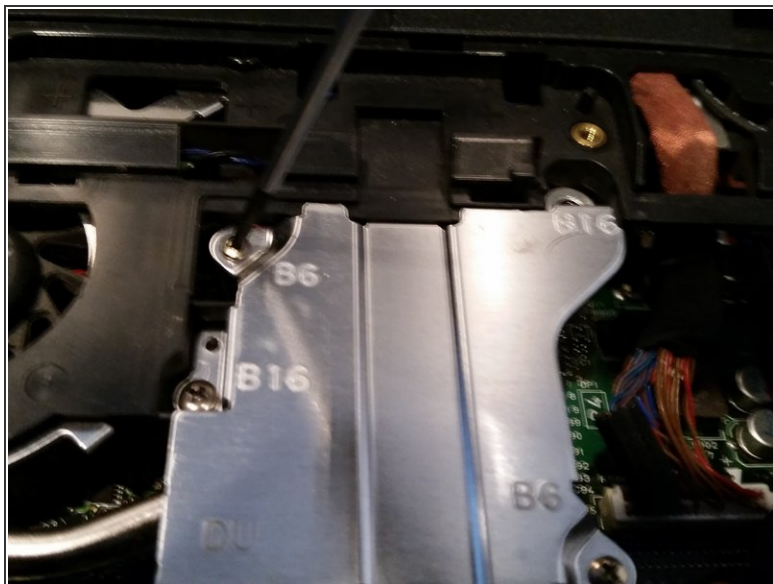
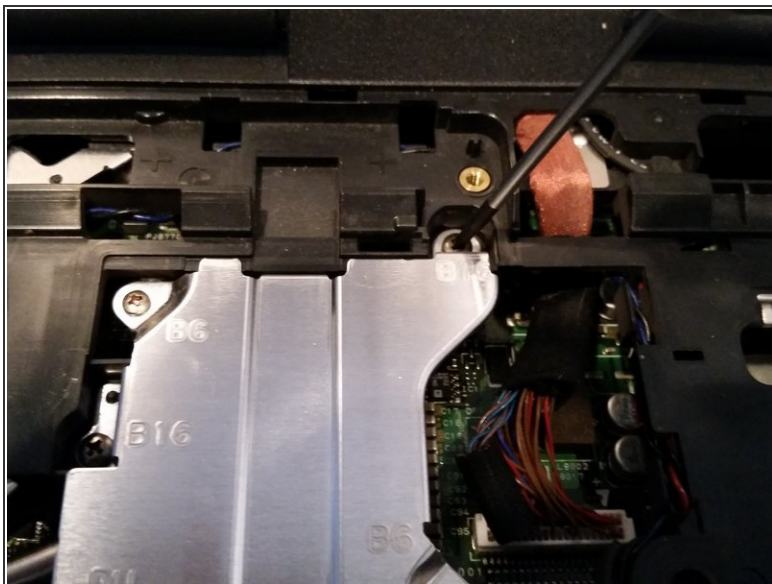
- Using spudger, push the optical drive out to the right.

Step 15 — Upper Case



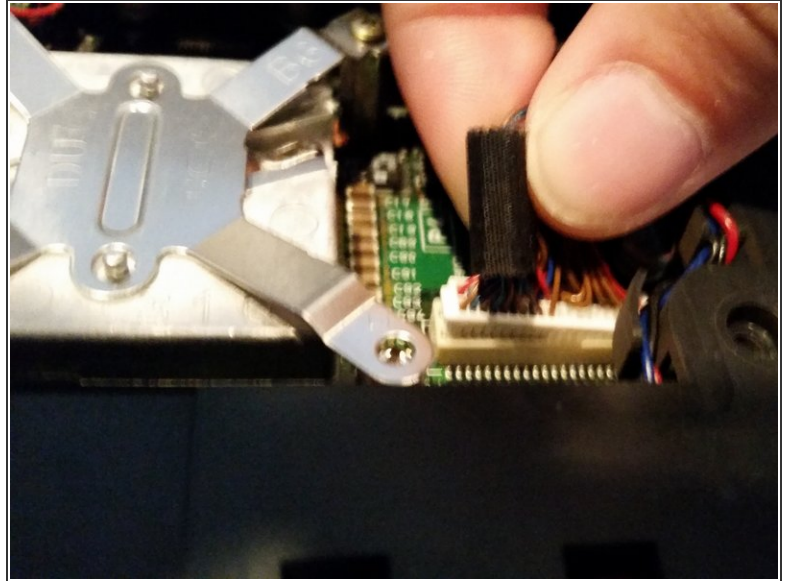
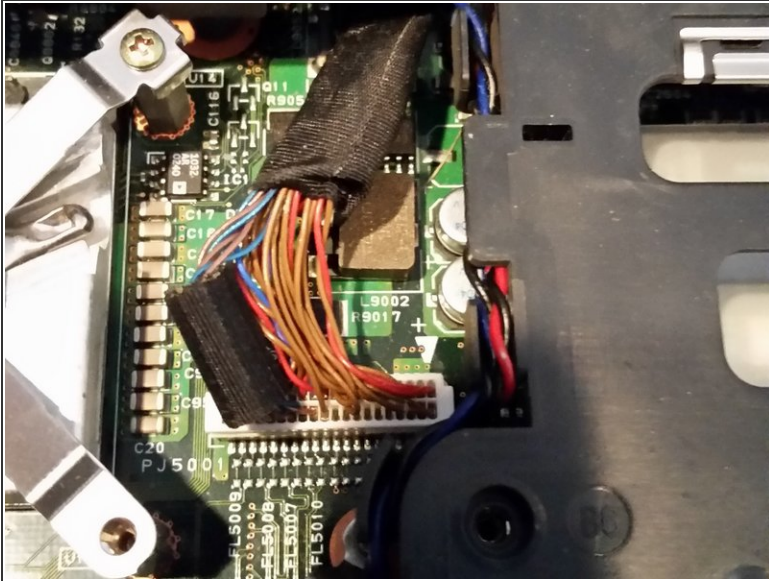
- Disconnect both speaker connectors located near the center of the laptop.

Step 16



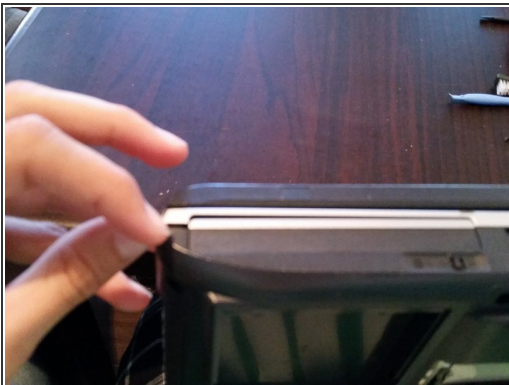
- Unscrew all visible screws on the heat sink shield.

Step 17



- Disconnect the monitor connector.

Step 18



- Starting from the front right corner pry apart the black bottom from the gray top.

Step 19



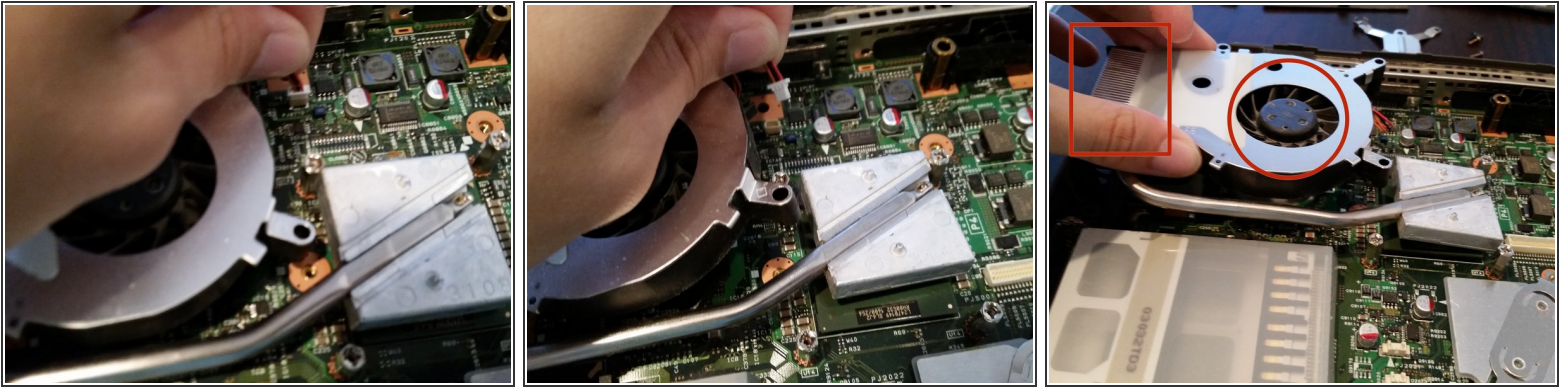
- Set aside the top half.

Step 20 — CPU Fan and Heatsink



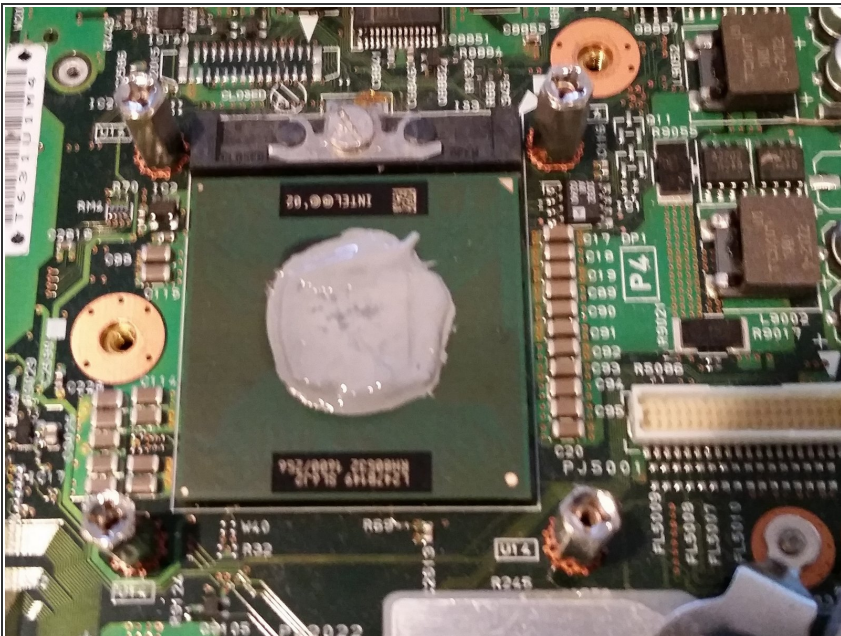
- Unscrew the remaining screws on the heatsink and fan brackets.

Step 21



- Disconnect the fan power connector.
- Remove the heatsink and fan.
- Check the heatsink fins and fan for any dust build-up. If any is found use compressed air to clean.

Step 22



- Clean the old thermal paste off the CPU and heatsink.
- Use a q tip to remove the majority of the thermal paste.
- Use an isopropyl alcohol soaked q tip to further clean remaining thermal paste.
- Dry and clean both surfaces with another q-tip.
- Once completely clean, apply a rice grain sized amount of new thermal paste to the CPU and reattach the heatsink and fan.

To reassemble your device, follow these instructions in reverse order.

This document was generated on 2020-11-19 07:08:42 PM (MST).

