



# Mac mini Late 2014 AirPort Card Replacement

Replace the AirPort/Bluetooth board in a Late 2014 Mac mini.

Written By: Sam Goldheart



# INTRODUCTION

Problems with Wi-Fi or Bluetooth? You may have a faulty AirPort card. Use this guide to replace the AirPort card in your Mac mini Late 2014.



## TOOLS:

- [iFixit Opening Tools](#) (1)
- [Spudger](#) (1)
- [TR6 Torx Security Screwdriver](#) (1)
- [T5 Torx Screwdriver](#) (1)



## PARTS:

- [Mac mini A1347 \(Late 2014\) Airport Card](#) (1)

## Step 1 — Bottom Cover



- The bottom cover is clipped onto three screw posts.
- Pry near, but not right on the screw posts.

## Step 2



- Use the plastic opening tool to pry the bottom cover up off of the Mac mini.



## Step 3



- Lift and remove the bottom cover.


## Step 4 — Antenna Plate



- Remove the following TR6 screws from the antenna plate:
  - Three 4.1 mm screws
  - Three 1.9 mm screws

## Step 5




 Do not completely remove the antenna plate; it is still connected to the Mac mini by an antenna cable.

- With the I/O ports facing you, flip the antenna plate to the right to allow access to the antenna cable connector.

## Step 6



- Remove the single 3.4 mm T6 screw and washer from the antenna cable.
-  Be careful not to lose the washer when removing the screw.

## Step 7



- Use the point of a spudger to lift the antenna connector straight up off its socket on the airport card.

## Step 8



- Carefully pull the antenna cable out from the gap between the power supply and case.



## Step 9



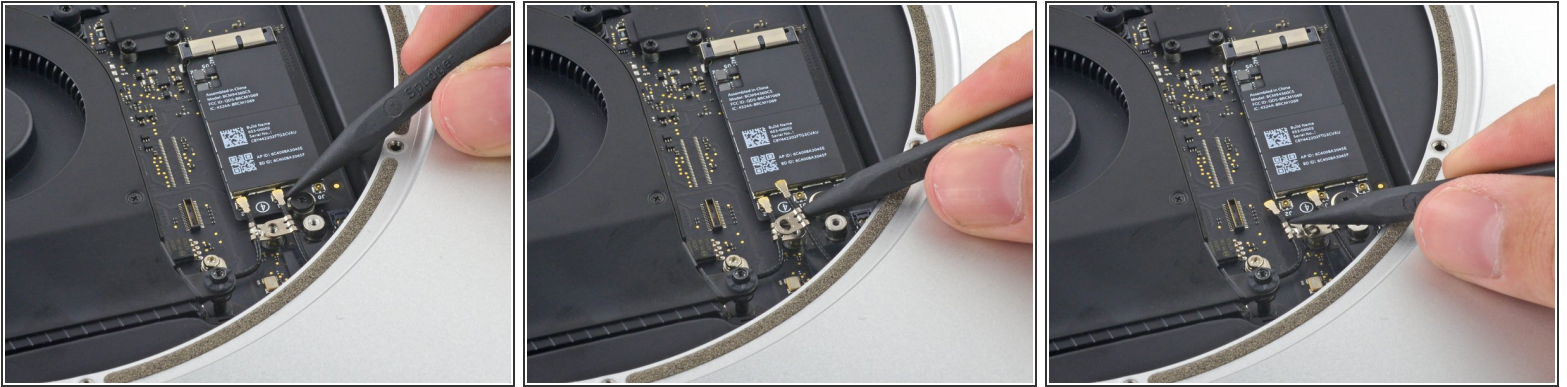
- Remove the antenna plate from the Mac mini.

## Step 10 — AirPort Card



- Remove the single 3.4 mm T6 screw and washer from the antenna cable.
- ⓘ Be careful not to lose the washer when removing the screw.

## Step 11



- Use the point of a spudger to lift the antenna connectors up off their sockets.

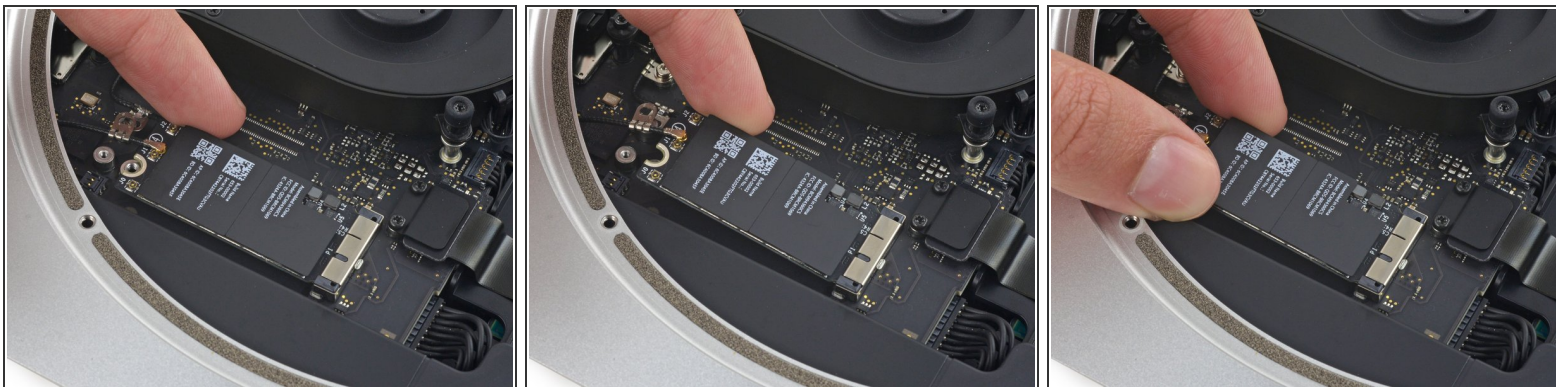
## Step 12



- Remove the 2.7 mm T5 screw securing the AirPort card.

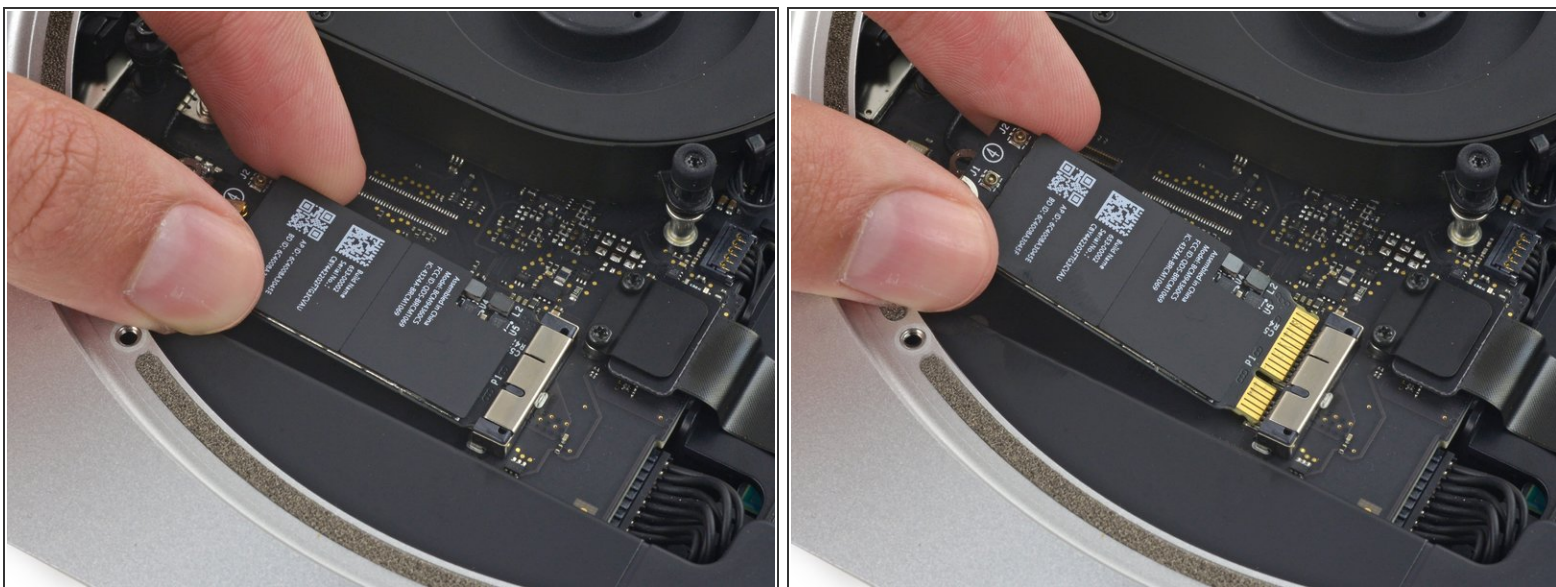


## Step 13



- Lift the free end of the AirPort card enough to grasp it by the edges.

## Step 14



- Pull the AirPort card straight out of its socket on the logic board and remove it from the Mac mini.

To reassemble your device, follow these instructions in reverse order.