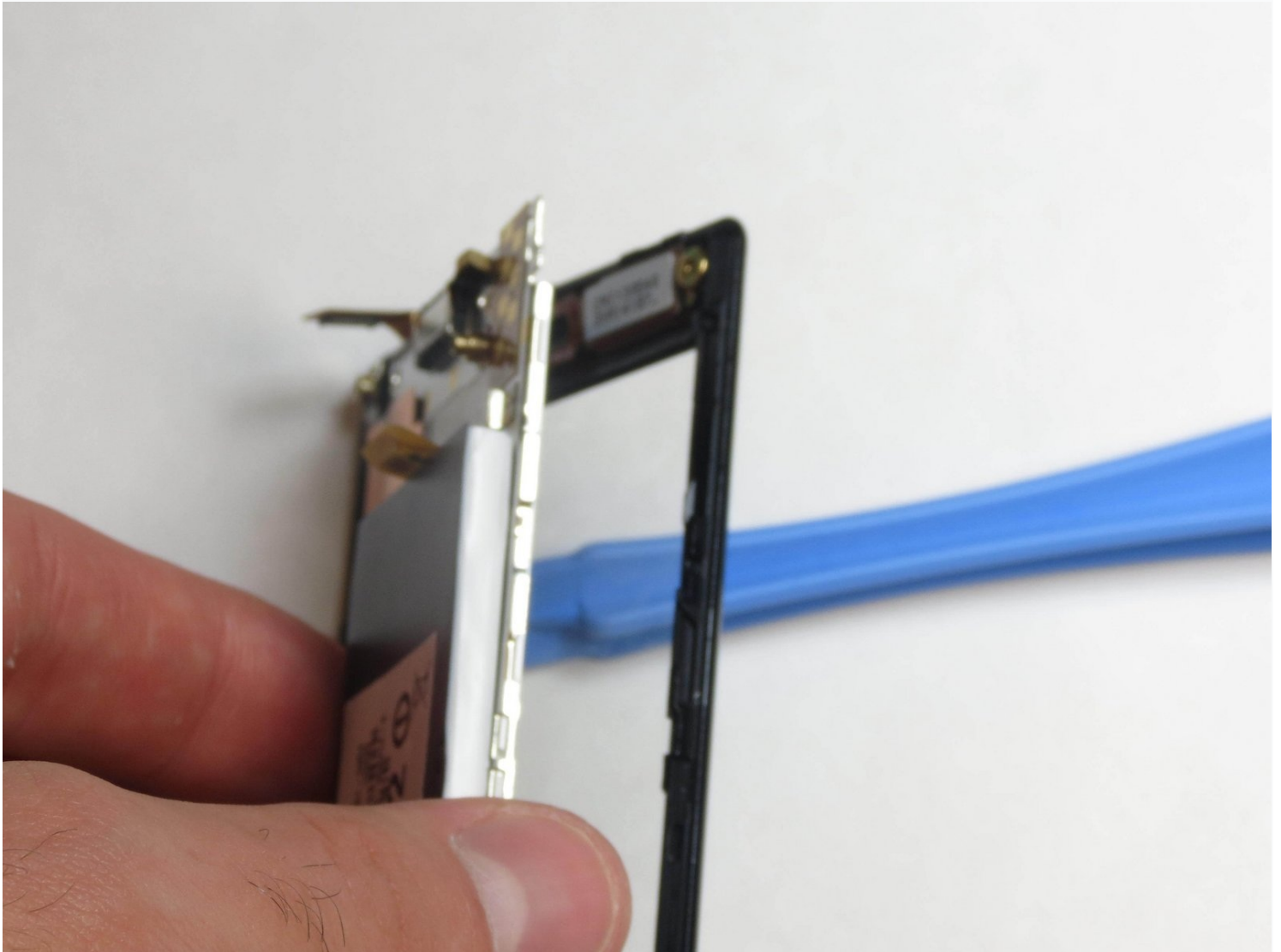




Sony Xperia Sola LCD Screen Replacement

This will guide you to remove and replace your...

Written By: Cary Drew



INTRODUCTION

This will guide you to remove and replace your LCD screen on your phone.



TOOLS:

[64 Bit Driver Kit](#) (1)
[Magnetic Project Mat](#) (1)
[Metal Spudger](#) (1)
[Spudger](#) (1)
[iFixit Opening Tool](#) (1)
[Tweezers](#) (1)



PARTS:

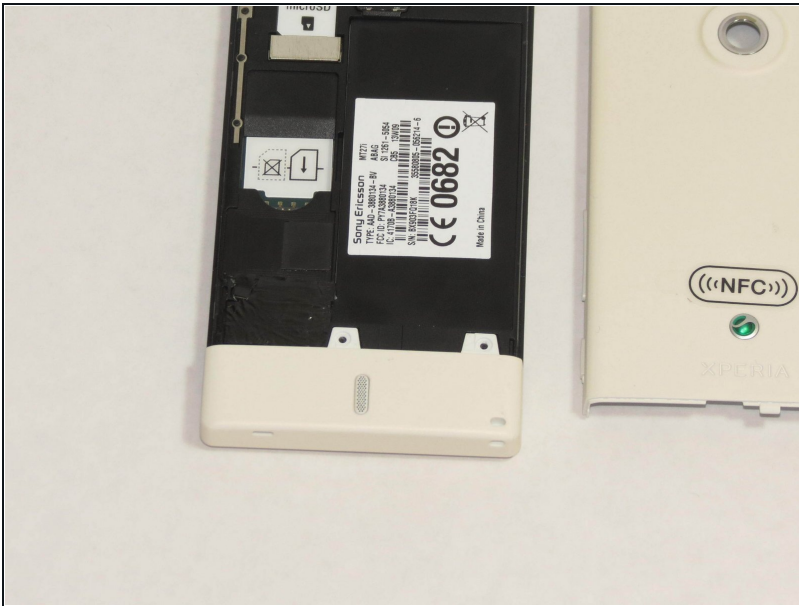
[Sony Xperia Sola LCD Screen.](#) (1)

Step 1 — Lay the phone as shown.



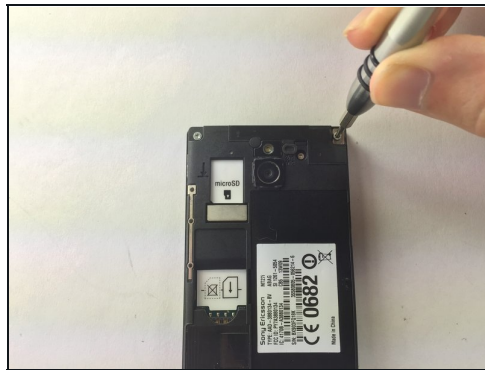
- Place phone down with screen side down and camera side facing up as shown.

Step 2 — Remove the back cover.



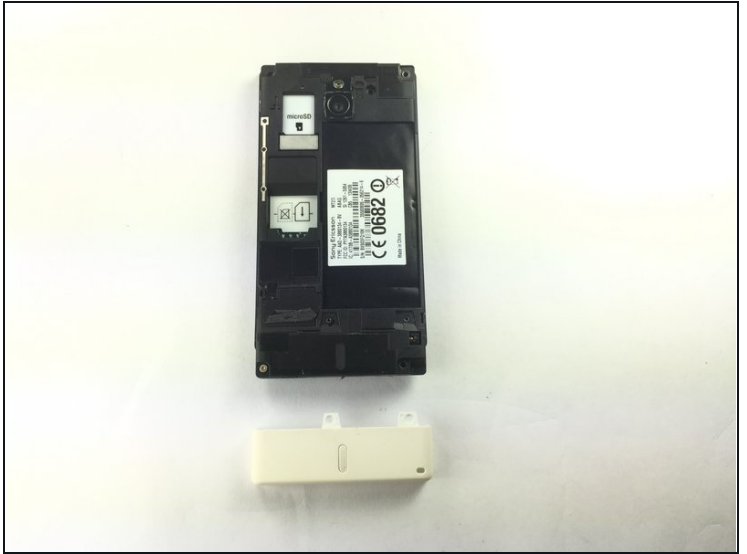
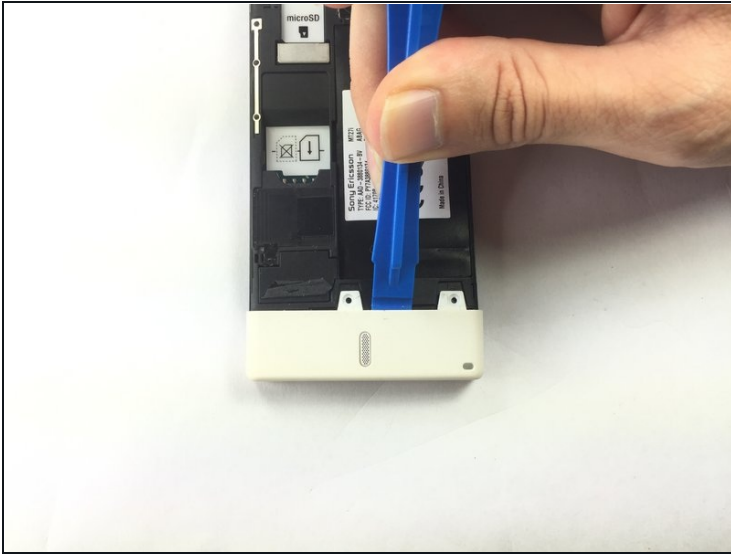
- Push on cover away from you. You should hear a snap or pop. This will let you view the battery and sim/sd card slots. Then lift the cover off.

Step 3 — Remove the screws.



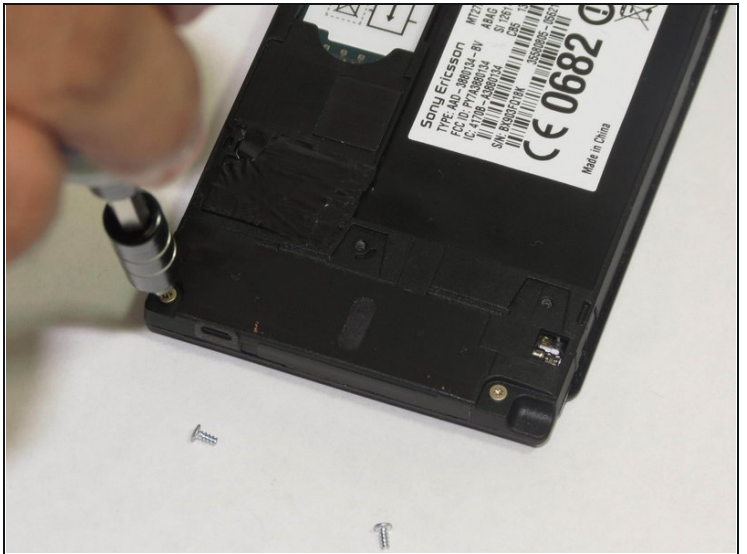
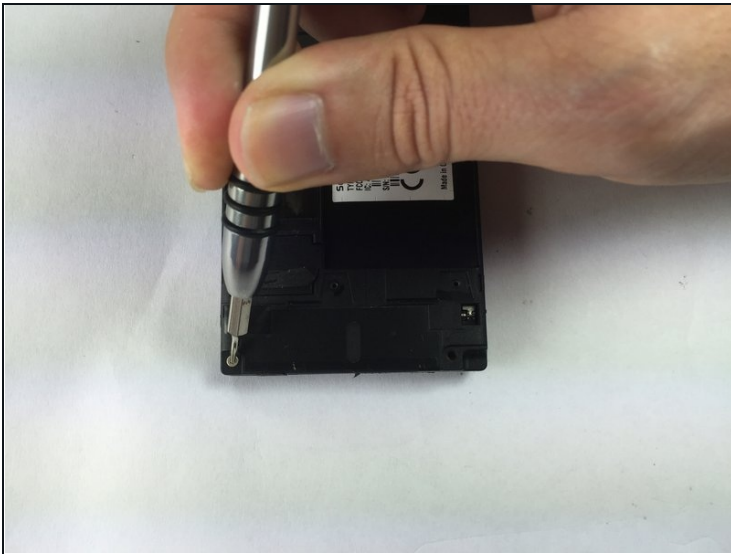
- Locate and remove the five (5) screws on the phone, using the 26 Bit Kit. The screws are at the top and the bottom of the phone as shown.

Step 4 — Remove bottom white cover.



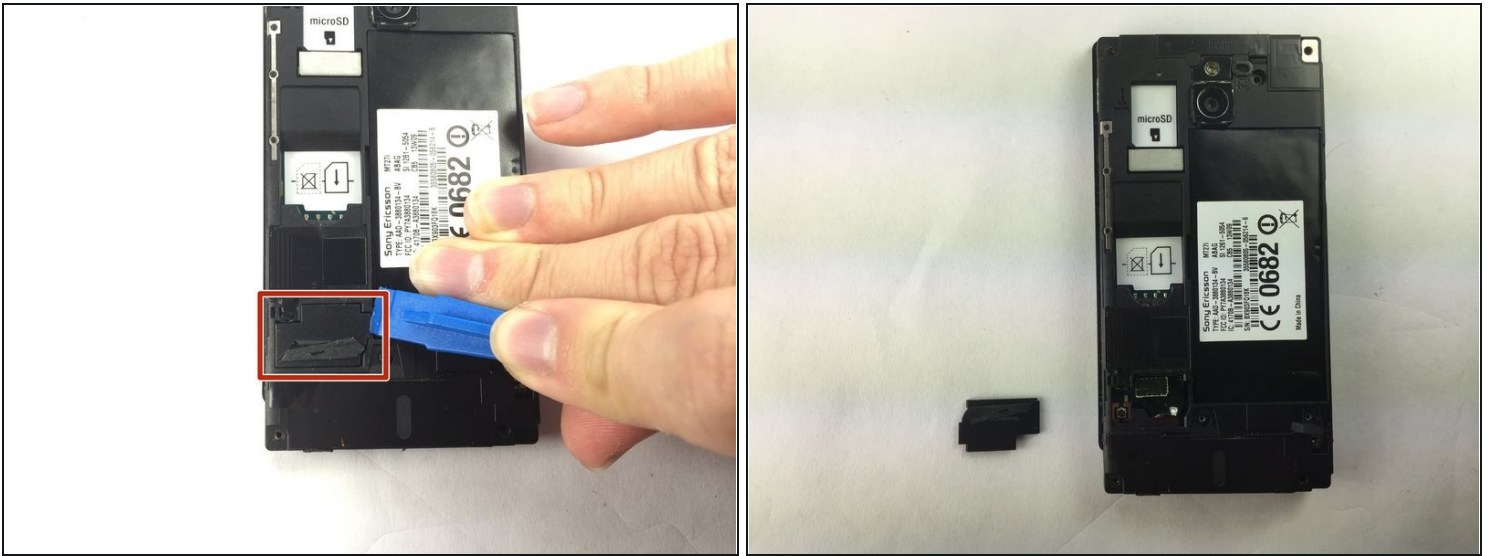
- Pry off the bottom white cover by using the opening tool as a lever.

Step 5 — Remove more screws.



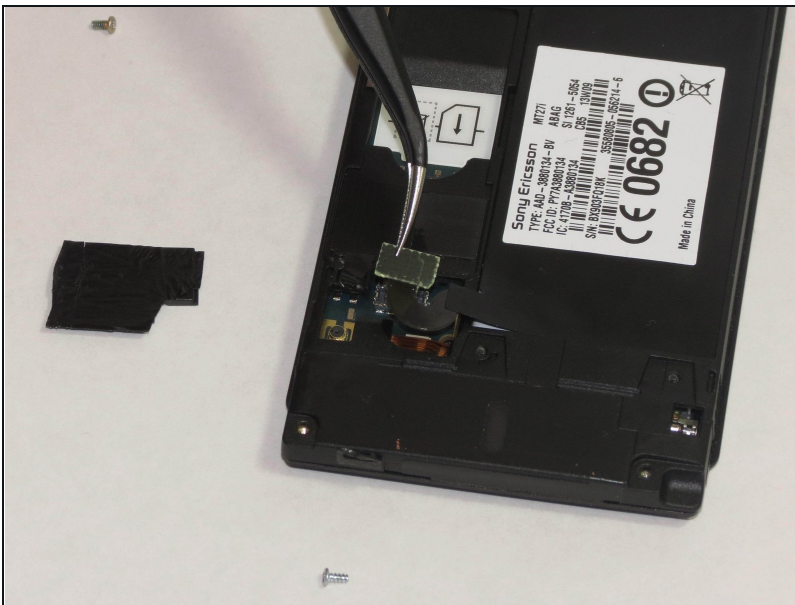
- Locate and remove the 2 additional screws, using the 26 Bit Kit, that are revealed. These are marked as shown.

Step 6 — Remove black cover.



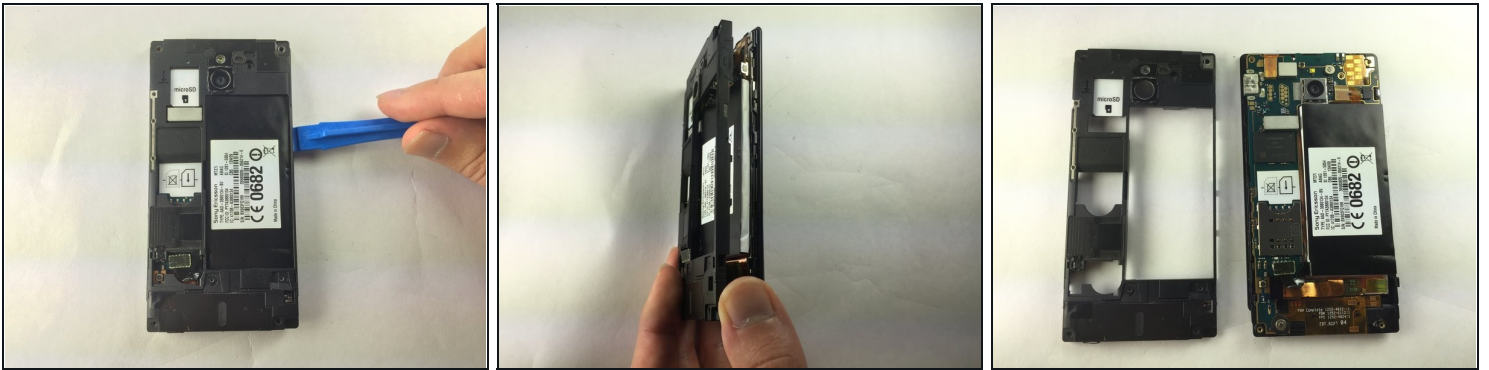
- Locate the black cover on the bottom left of phone. Use an opening tool to pry up and remove the black cover.

Step 7 — Disconnect the battery's circuit.



- Disconnect the circuit by lifting the connector straight up as shown using the [tweezers](#).

Step 8 — Remove the phone's inner back cover.



- Turn the phone onto its side, insert plastic opening tool into seam, and gently remove cover. You can also slide the spudger in from the top.
- Once the cover is loose, lift it off the phone. The side buttons may feel a bit sticky, but this is normal.

Step 9 — Remove the additional power circuit.



- Locate the additional circuit at the bottom left. Using the tweezers, remove it gently by pulling up.

Step 10 — Repeat for the circuit on the top end of the battery.



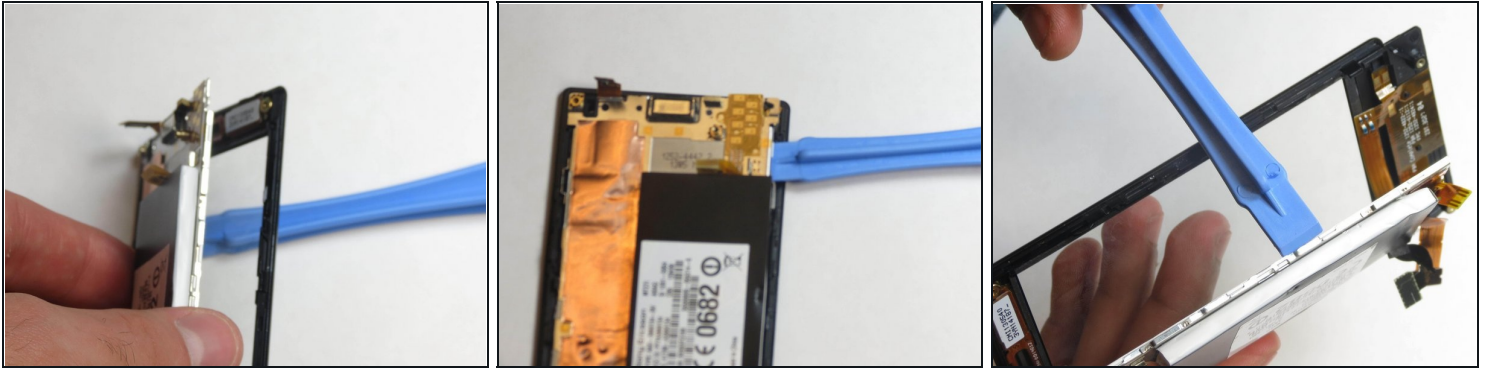
- Use the tweezers to lift up on the circuit located at the top left.

Step 11 — Remove the motherboard.



- Use the spudger and slide it under the top left of the board then lift the board straight up. The board should come up very easily.

Step 12 — Remove the LCD screen.



- Use either the plastic opener or the spudger to slid in the side. It will go in between the LCD screen and the spot you pulled the board off of.

To reassemble your device, follow these instructions in reverse order.