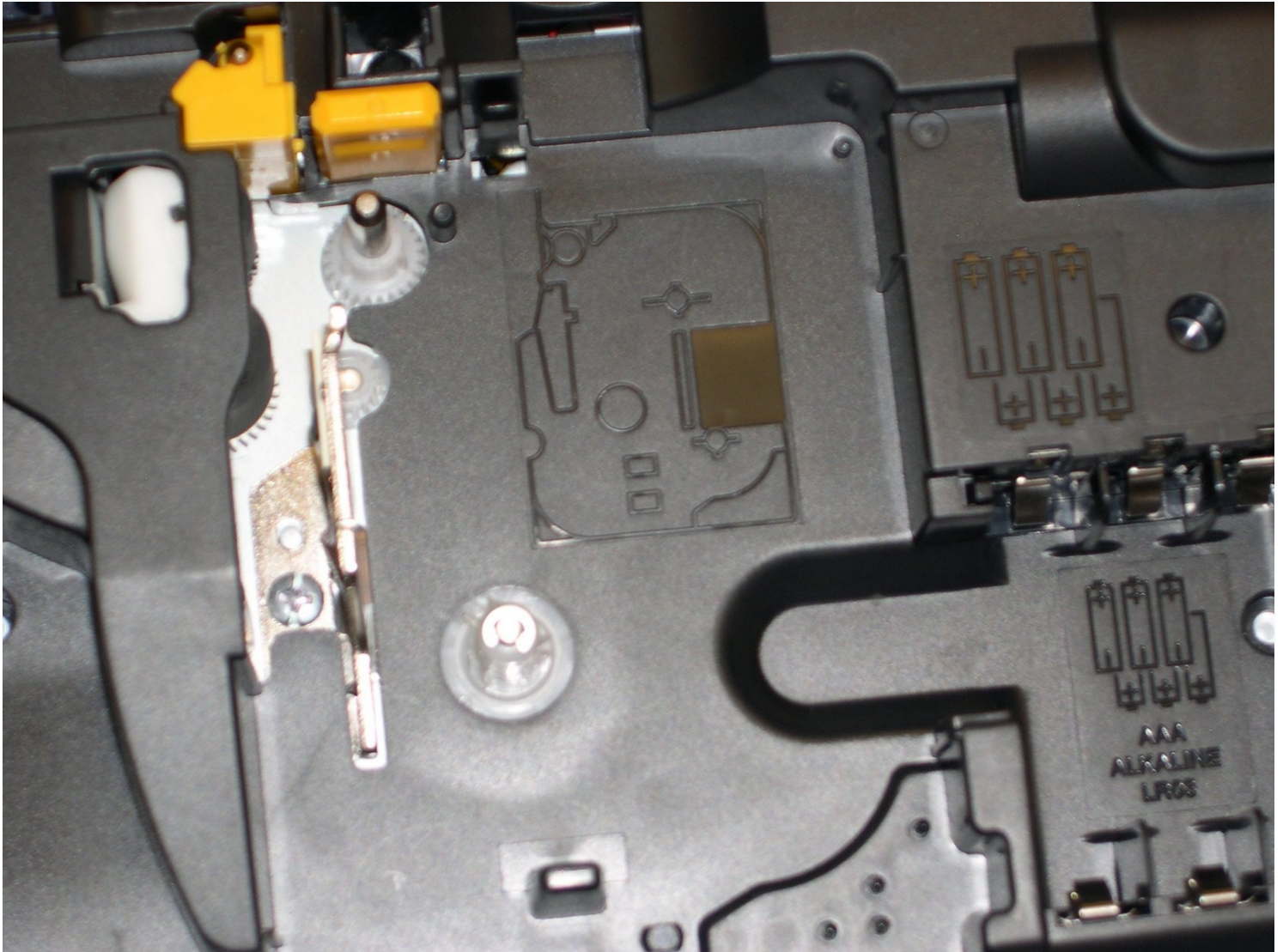




Brother PT-1290 Tape Cassette Replacement

This guide provides step by step instructions...

Written By: Lorraine Canez

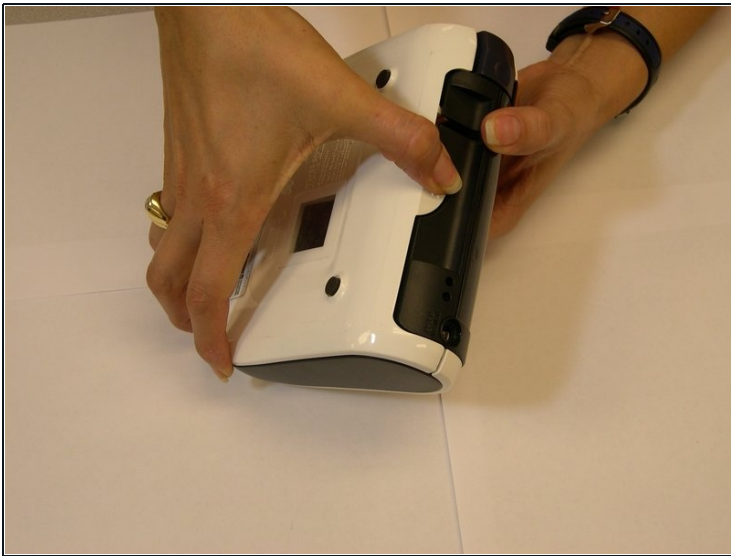


INTRODUCTION

This guide provides step by step instructions for replacing the tape cassette in a Brother PT-1290. The cassette may be empty, jammed, or misaligned and unable to feed through the printer. Removing and replacing the cassette will get it back up and running in no time!

Before beginning, remove the AC adapter from the label maker and make sure the device is powered off.

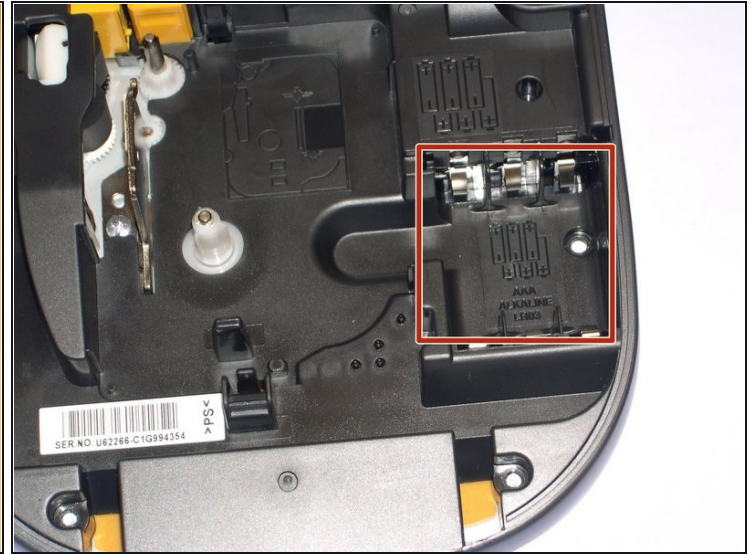
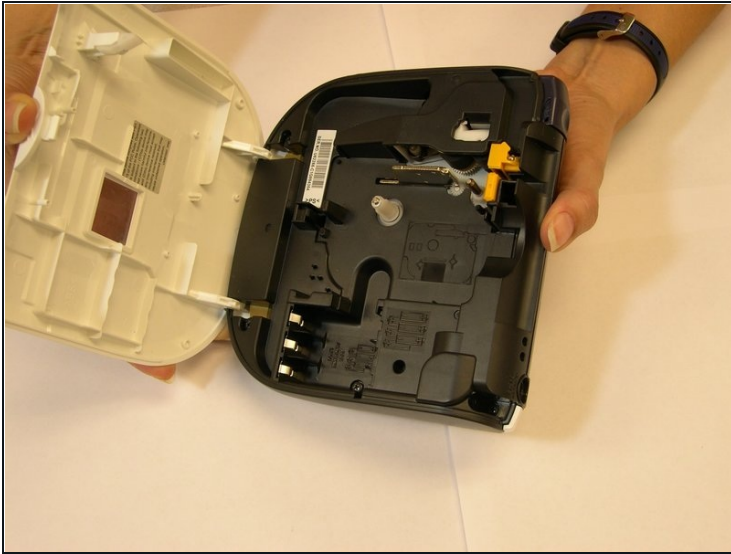
Step 1 — Removing the back piece of the label maker.



- There is a plastic tab located on the back of the label maker near the top. The tab has ridges on it to help you identify where to press. Push on this tab to release the back of the label maker.
- Gently pull the label maker apart - it will split in half.

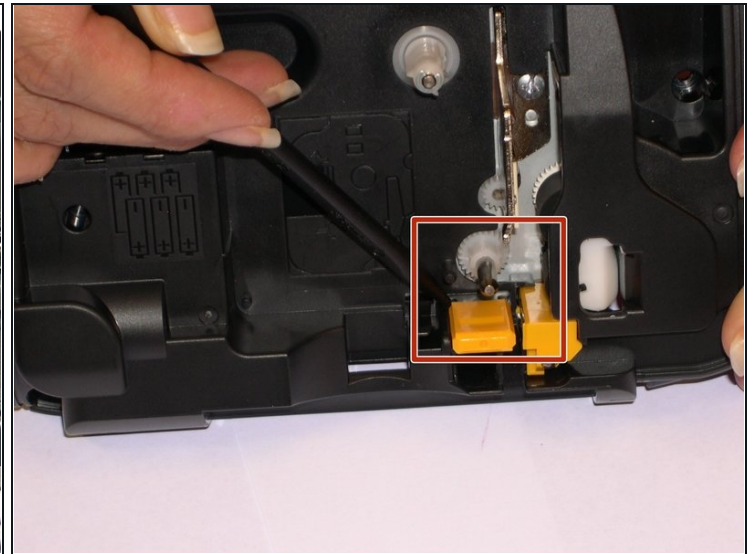
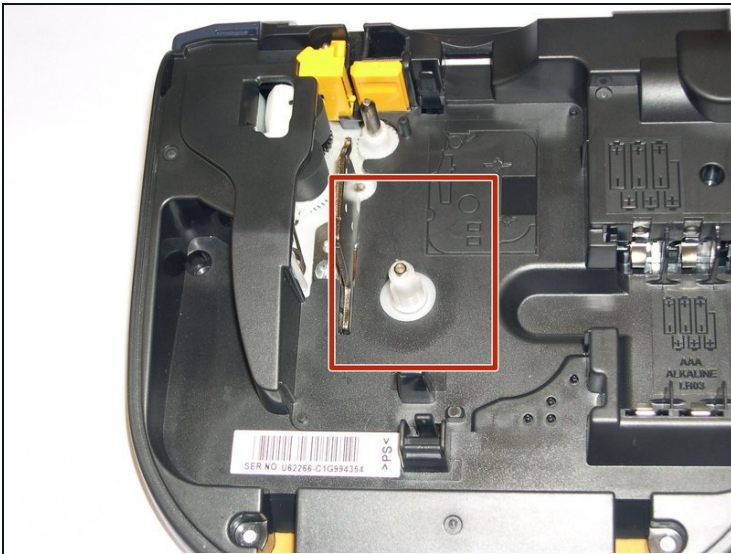
⚠ Be careful! The electronics inside are very sensitive and easily damaged.

Step 2 — Removing batteries or AC adapter.



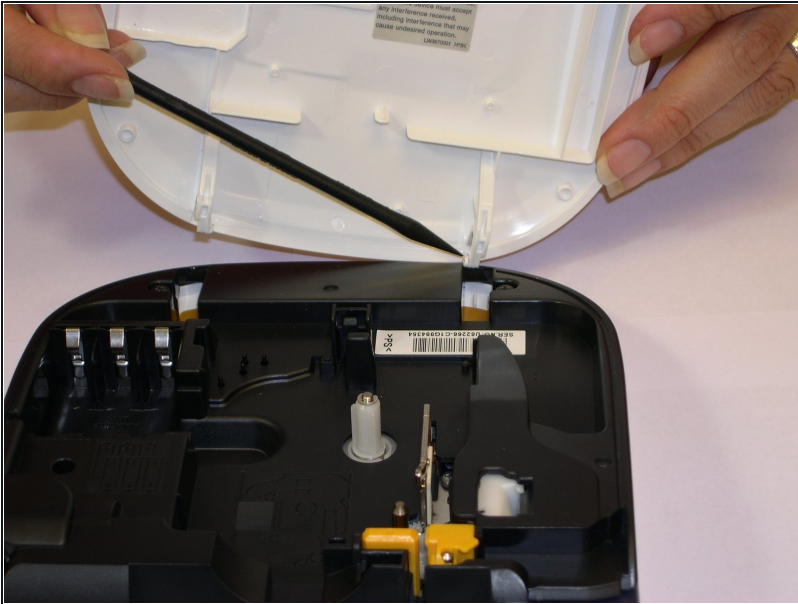
- Remove the AAA batteries before you proceed on to replacing the tape cassette.

Step 3 — Replacing tape cassette.



- Align and insert a new tape cassette. Make sure the center of the cassette snaps into place. The tape must feed between the tape guides.
 - ① If the ribbon has become too loose, use your finger to turn the white wheel in the direction of the arrow on the tape cassette. This will wind up any excess tape.
- ☑ Only use Brother TZ tapes with this machine.

Step 4 — Evaluating



- Place the batteries back inside, then close the cover.
- ① Check that all six batteries are inserted correctly.

Step 5 — Feeding Tape.



- To test the new cassette, make a new label. Press "Shift" and "Print" to feed the tape, then use the cutting lever on the upper-right corner of the machine.

To reassemble your device, follow these instructions in reverse order.