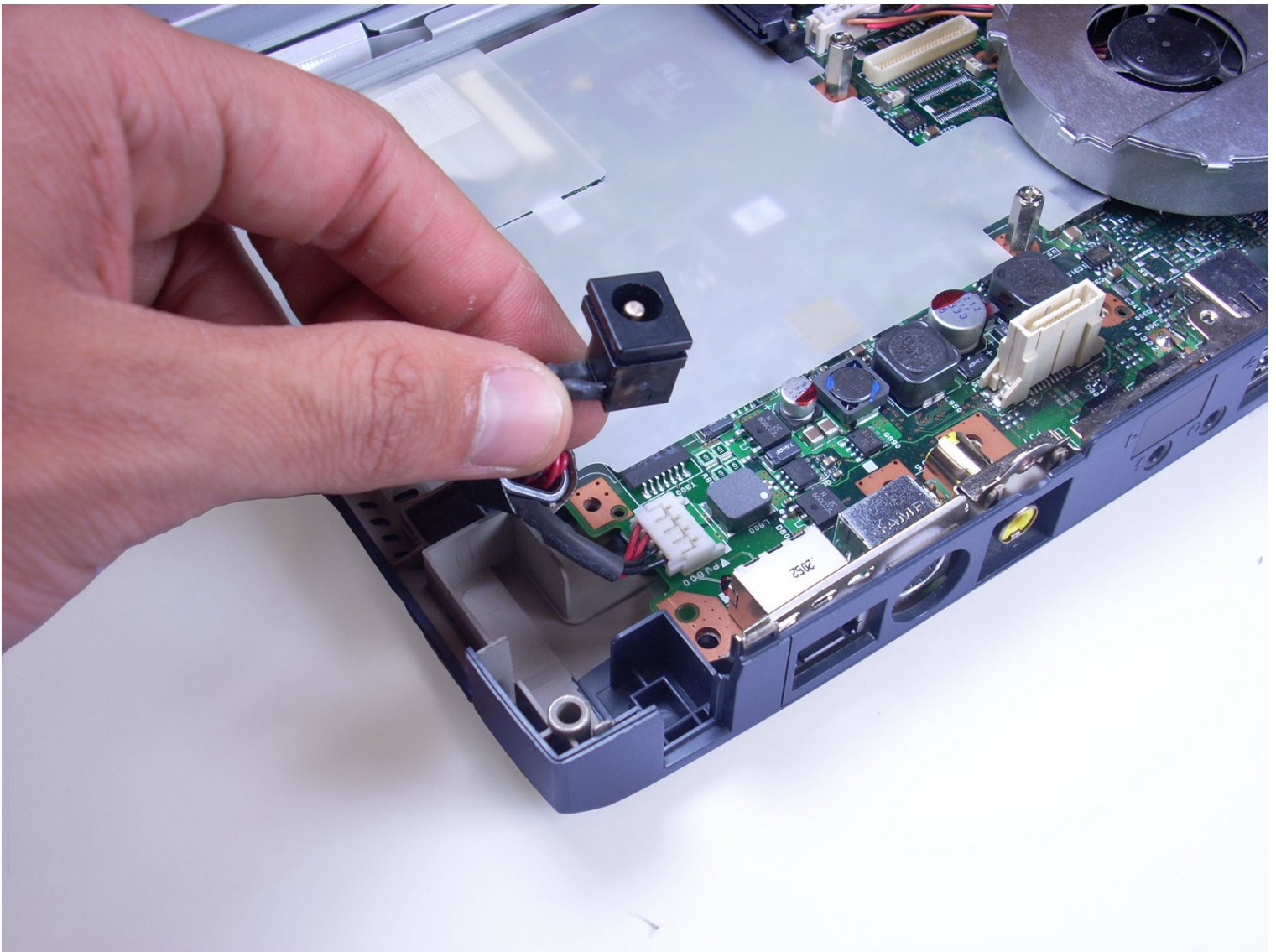




Toshiba Satellite 1805-S177 DC Adaptor Replacement

Written By: Hannah





TOOLS:

6-in-1 Screwdriver (1)

Phillips #00 Screwdriver (1)

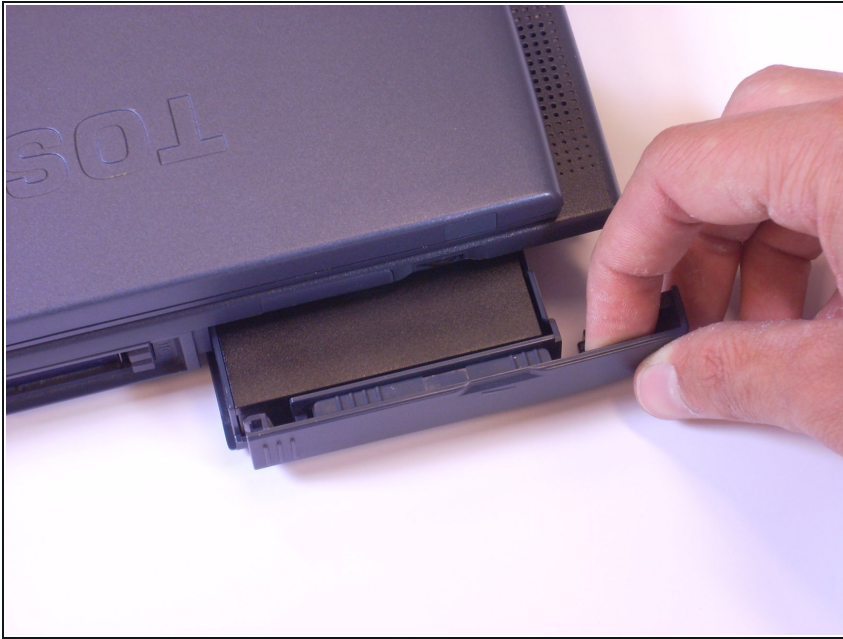
Spudger (1)

Step 1 — Battery



- Placing your finger on the raised grip, push the battery casing to the right. It will slide over.

Step 2



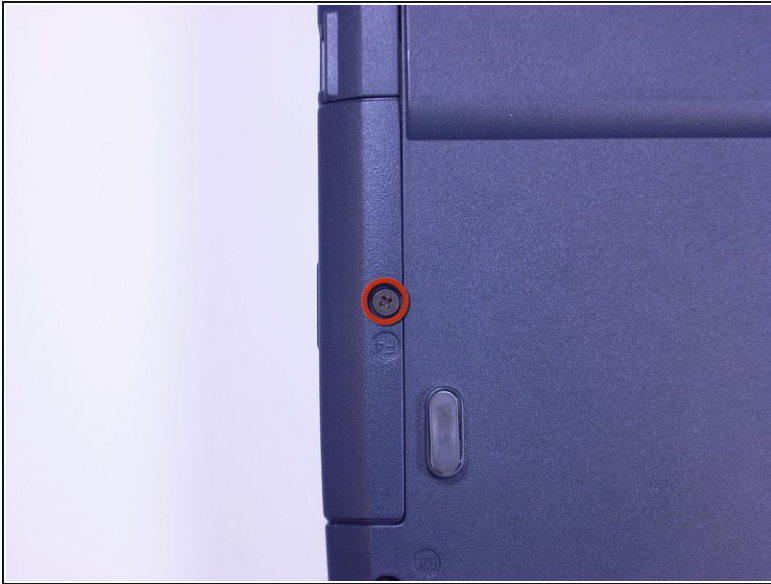
- Pull the battery casing gently out toward yourself, until you hear a clicking sound.
- ❗ The battery should pull out to about 2 inches.

Step 3



- Lift the battery casing out of the laptop.

Step 4 — Hard Drive



- Look at the bottom of the laptop. Using a Phillips screwdriver, unscrew and remove the screw labeled F4, located on the cover of the hard drive.

i The hard drive is located next to the CD drive.

Step 5



- Placing your finger on the raised grip, push up on the hard drive cover. This will remove the hard drive cover from the laptop.

Step 6



- Using a Phillips screwdriver, unscrew and remove the screw surrounded by the white plastic.

Step 7



- Pull the white plastic out toward you. This should remove the hard drive tray from the laptop.
- ⓘ This laptop does not have a hard drive, so the tray is empty. On your computer, the hard drive should be in the tray.

Step 8 — Keyboard



- Stick a spudger in one of the sides of the top panel. Lift slowly from one side to the other and it will pop off.

Step 9



- Using an Phillips screwdriver, unscrew and remove two screws labeled B2.6.

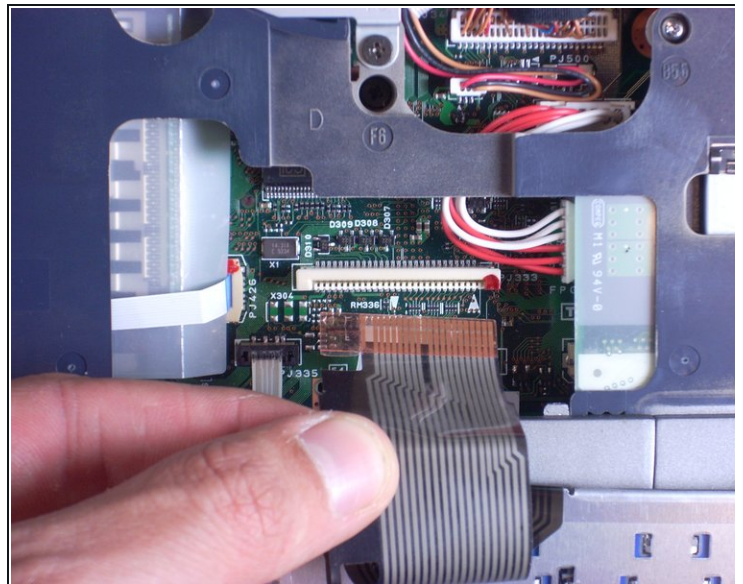
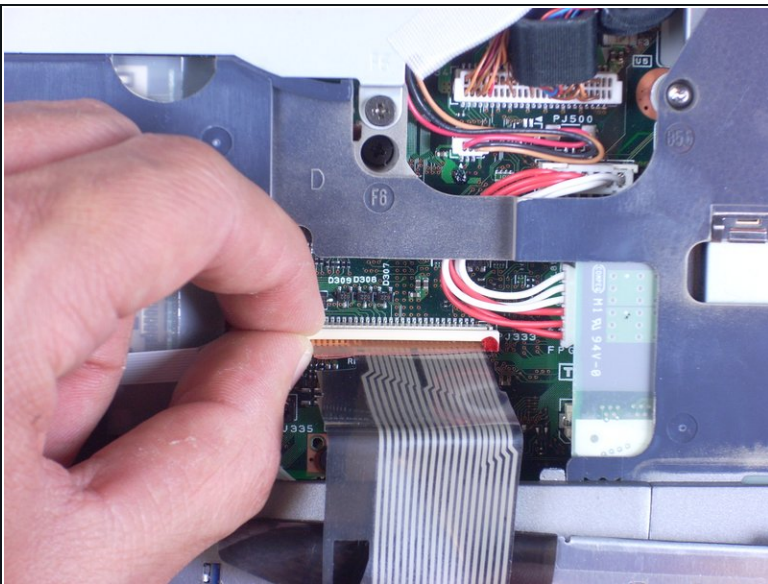
Step 10



- Using your hands, lift keyboard up toward you, starting from the edge closest to the screen.

⚠ The keyboard is still connected to the laptop by a ribbon. Place the keyboard gently on top of the trackpad, keys side down.

Step 11



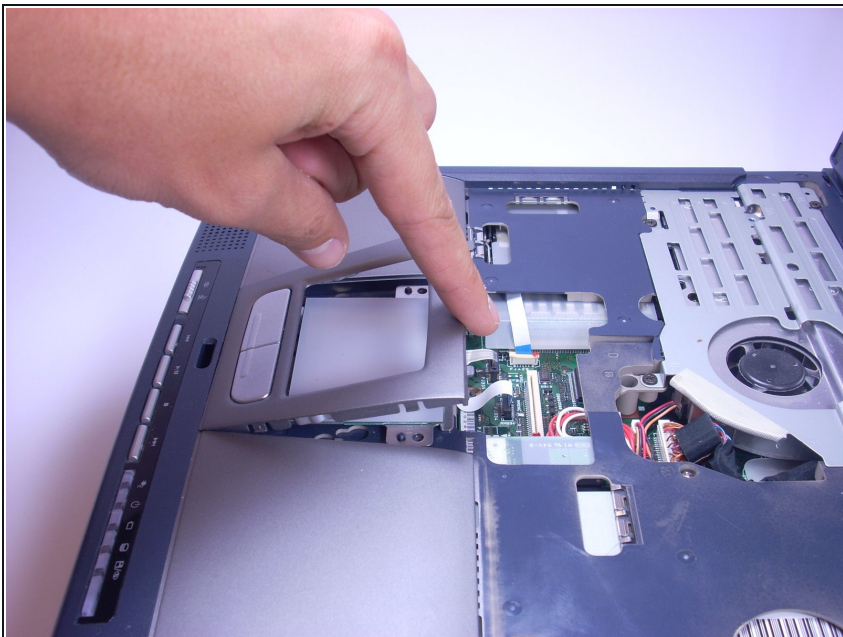
- Find the white ribbon connector (where the keyboard is still attached to the rest of the laptop).
- Slide the white ribbon connector up and lift the ribbon out of it.

Step 12 — TrackPad



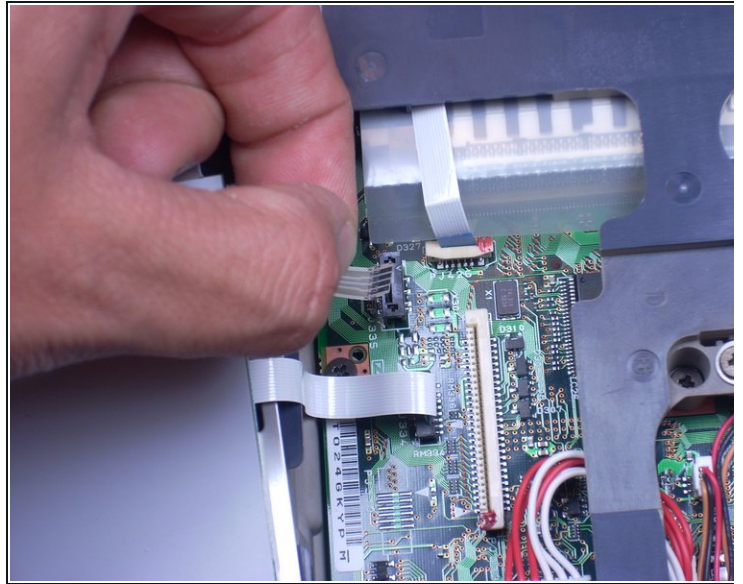
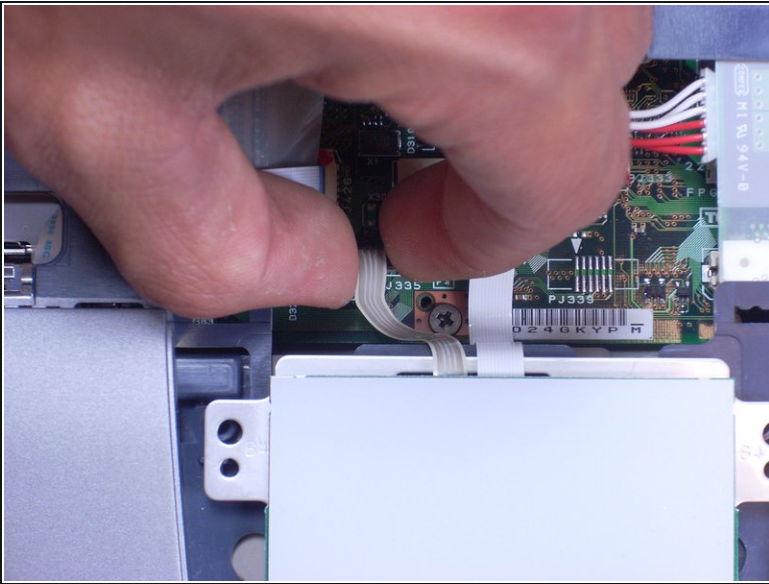
- Using a Phillips Screwdriver, unscrew and remove the one F4 screw closest to the center of the laptop.
- ❗ This screw is underneath the battery casing, located on the bottom of the laptop directly under the trackpad.

Step 13



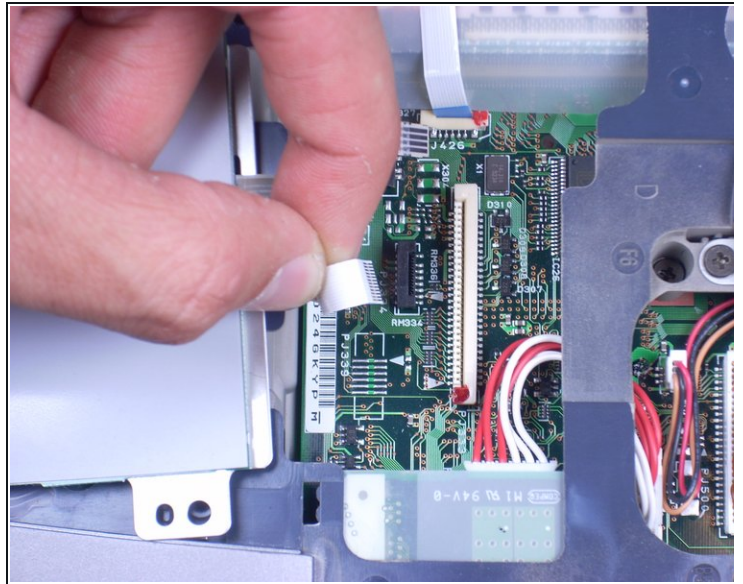
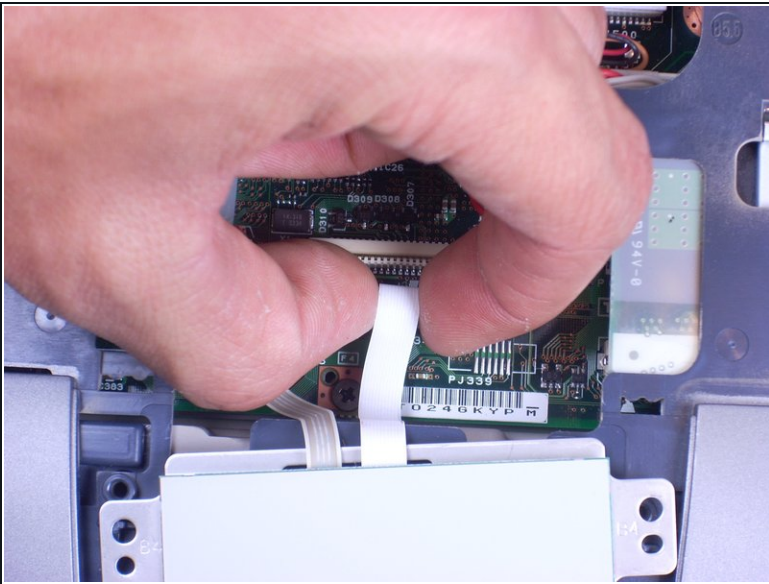
- Using your finger, lift off the plastic covering the trackpad by putting your finger underneath the plastic and pulling towards you. The plastic should just pop off.

Step 14



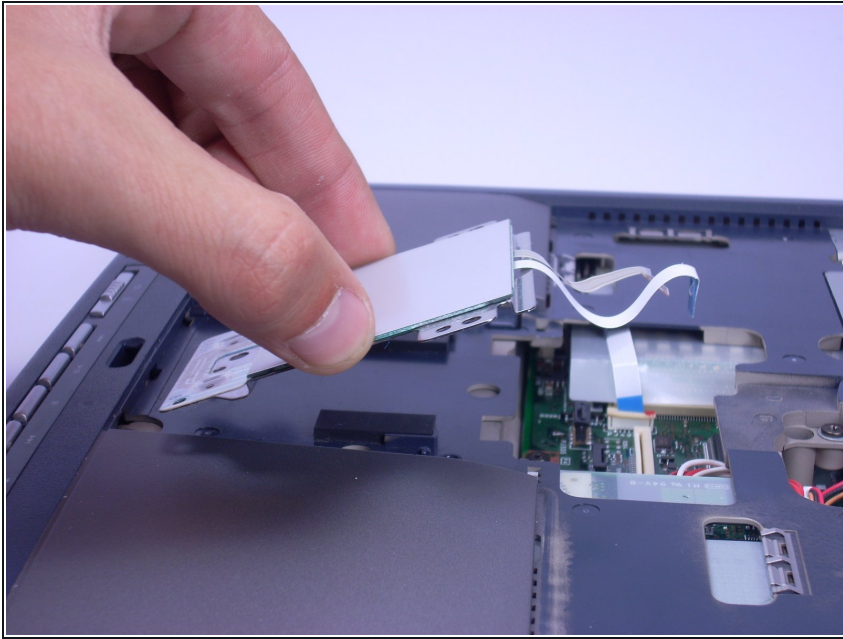
- Remove the left, brown ribbon by pinching the part of the ribbon connected to the computer and lifting towards you.

Step 15



- Remove the white ribbon on the right by pinching the part connected to the laptop with your fingers and pulling towards you.

Step 16



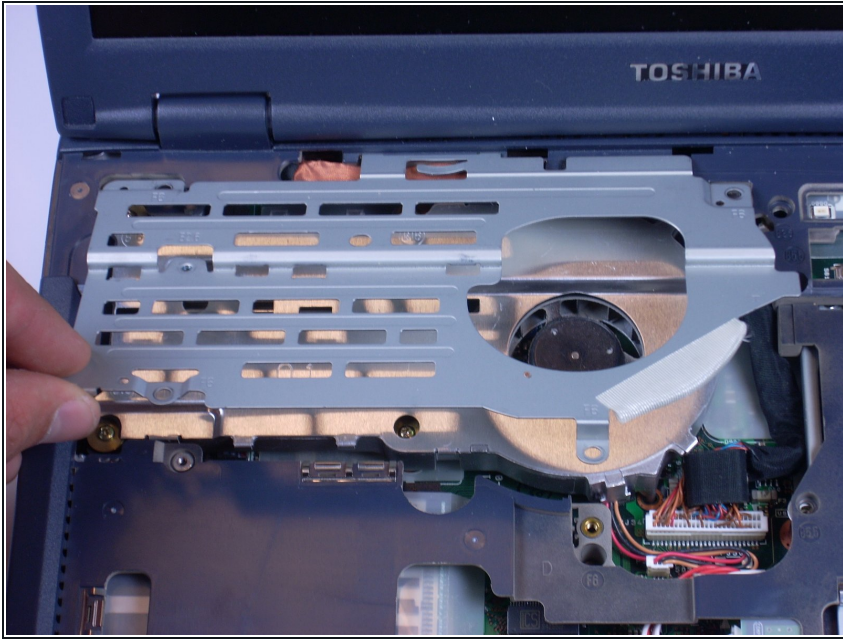
- Lift the track pad gently towards you, using your fingers.

Step 17 — Screen



- Using a Phillips screwdriver, unscrew and remove 5 screws labeled F6, located on the metal piece on the left side of the keyboard area.

Step 18



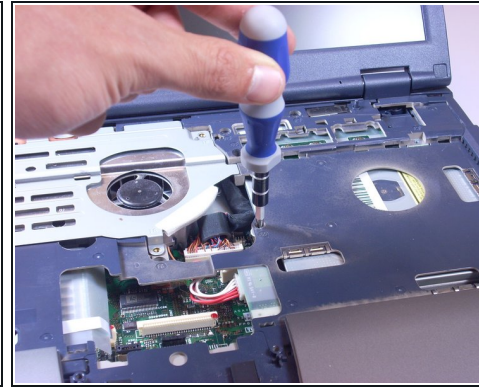
- Using your fingers, pinch and lift metal piece away from the laptop and set aside.

Step 19



- Using a Phillips screwdriver, unscrew and remove two screws labeled B25 located closest to the screen.

Step 20



- Using a Phillips screwdriver, unscrew and remove two screws labeled B5.5, located to the right of where the metal piece was.

i These screws are silver, where all the other screws have been black.

Step 21



- Using a Phillips screwdriver, unscrew and remove two black screws from the back side of the laptop.

i These screws are not labeled.

Step 22



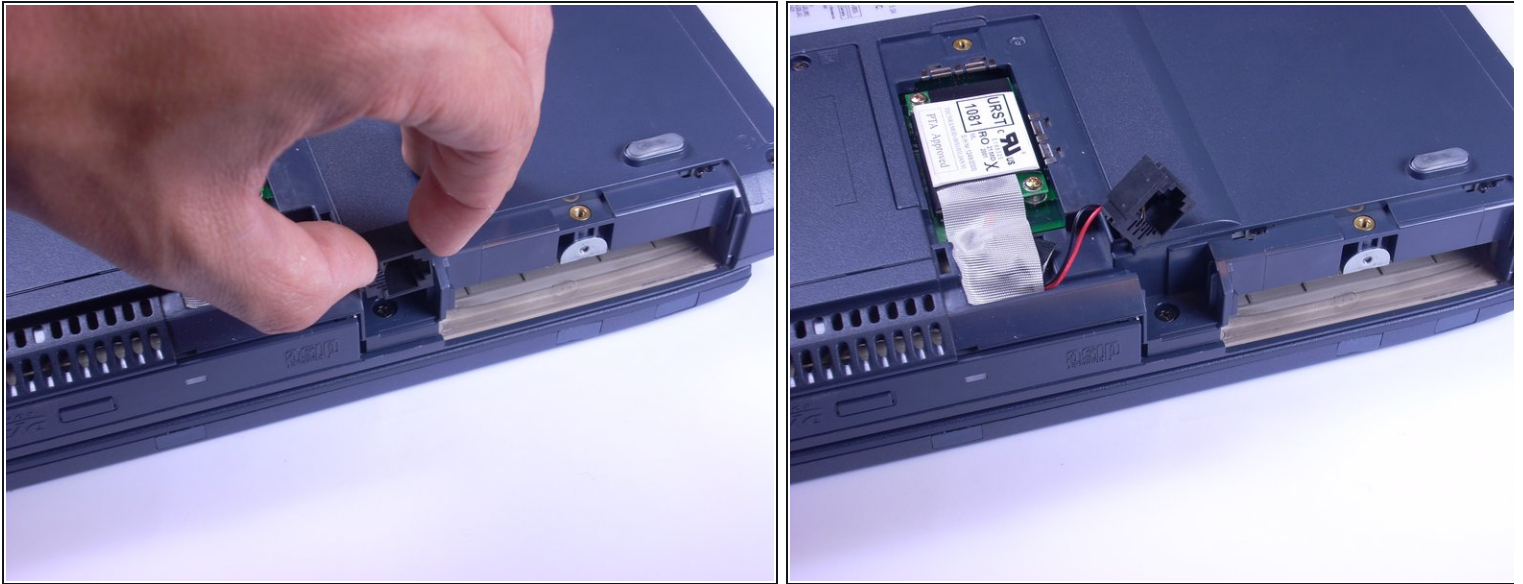
- Using a Phillips screwdriver, unscrew and remove F4 screw from plastic covering on the bottom of the laptop that only has one screw.

Step 23



- Using fingers, pinch and lift plastic covering up, away from the laptop and set aside.

Step 24



- Using your fingers, pinch the black modem piece, lift and slide the modem up and move it aside.
- ① The modem is connected to a red and black wire.

Step 25



- Using a Phillips screwdriver, unscrew and remove one F6 screw from beneath the modem.

Step 26



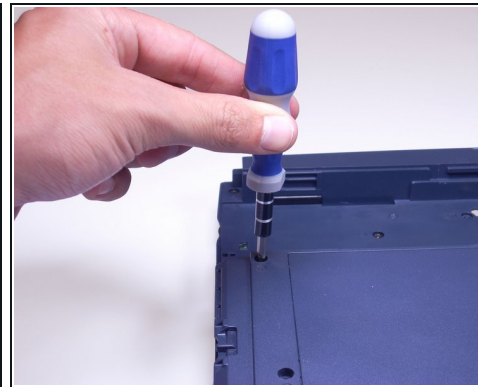
- Using a Phillips screwdriver, unscrew and remove 5 B20 screws, located along the corners of the bottom of the laptop.

Step 27



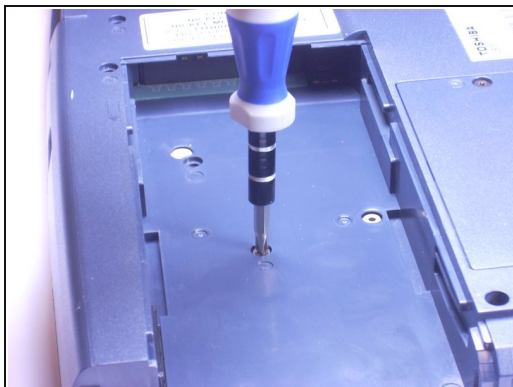
- Using a Phillips screwdriver, unscrew and remove 3 B25 screws from the bottom of the laptop.

Step 28



- Using a Phillips screwdriver, unscrew and remove 3 F6 screws from the bottom of the laptop.

Step 29



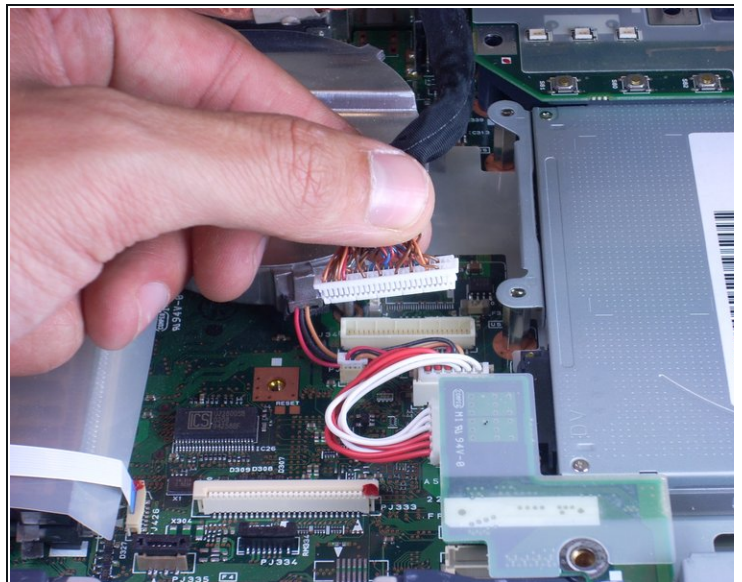
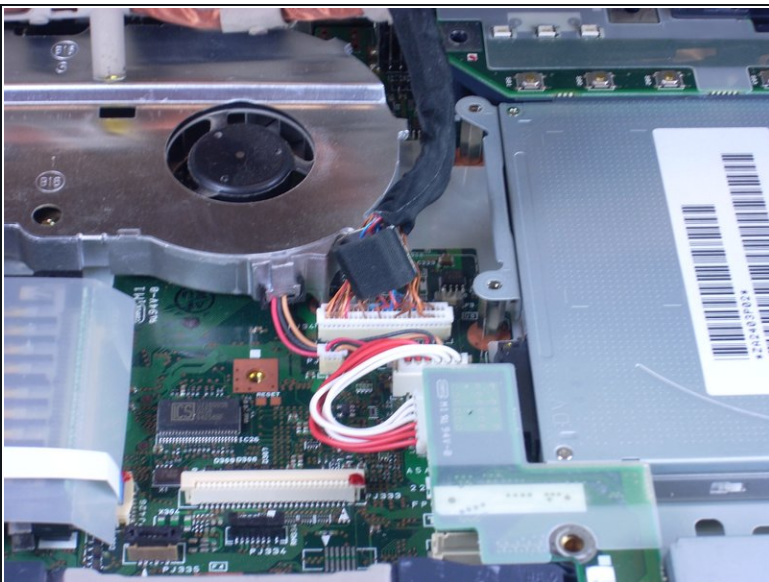
- Using a Phillips screwdriver, unscrew and remove 3 F4 screws from the battery area of the laptop.

Step 30



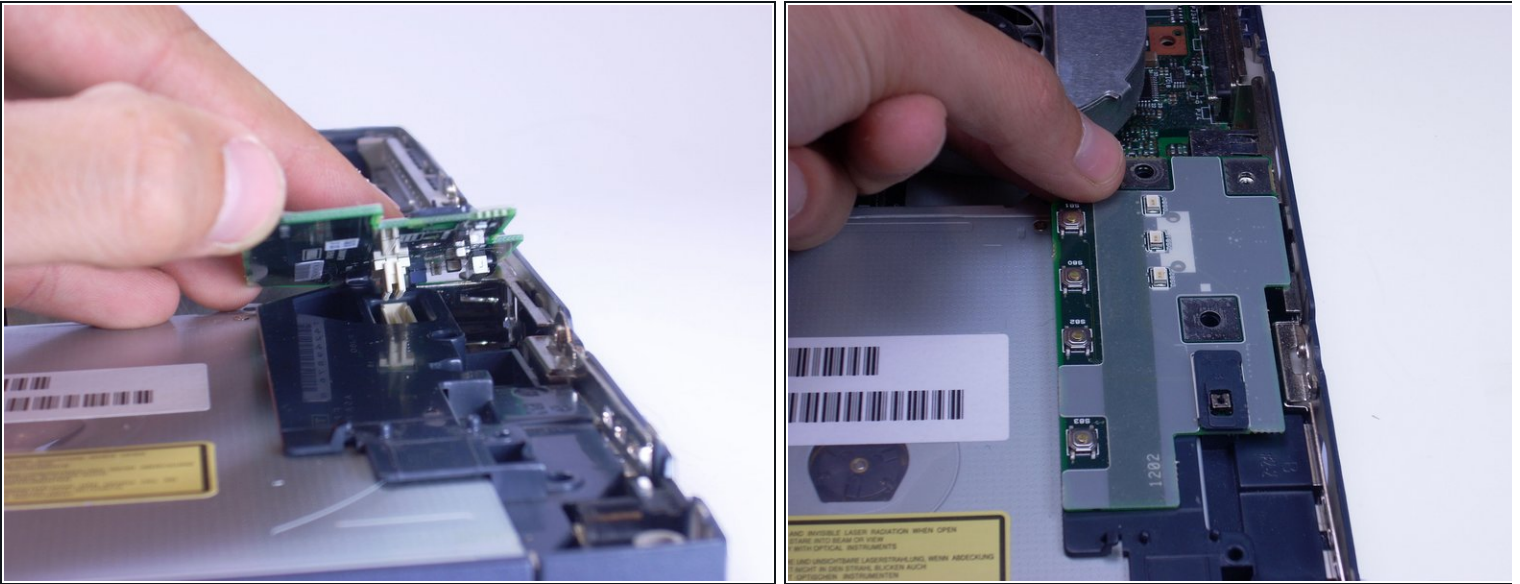
- Lift open the screen of the laptop and, using your fingers and the guides on the side of the laptop, push up on the top plastic covering of the laptop, moving from one side of the laptop to the other.

Step 31



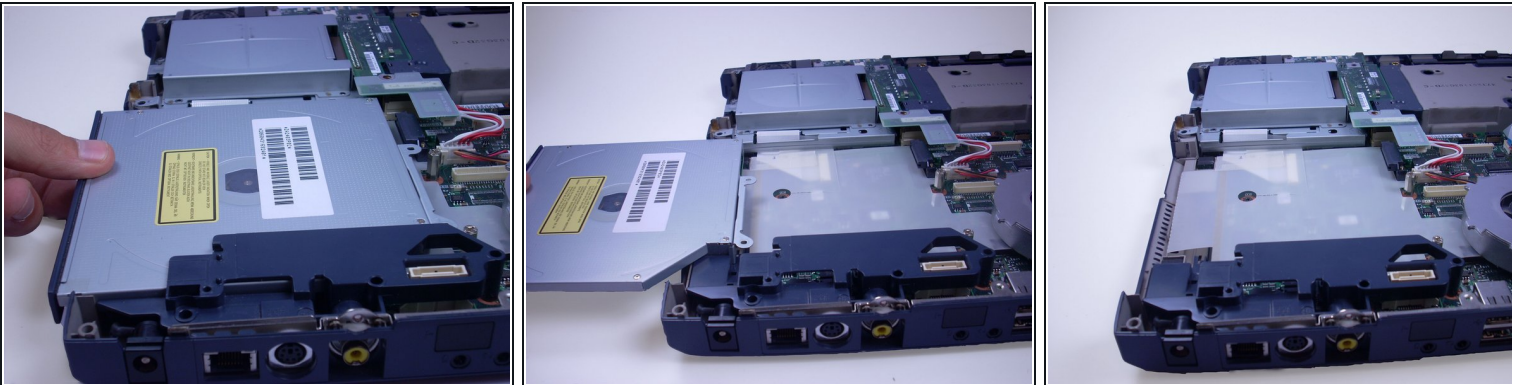
- Setting screen next to the base of the laptop, pinch the connecting cable with your fingers and gently pull connecting cable from monitor.

Step 32 — Optical Drive



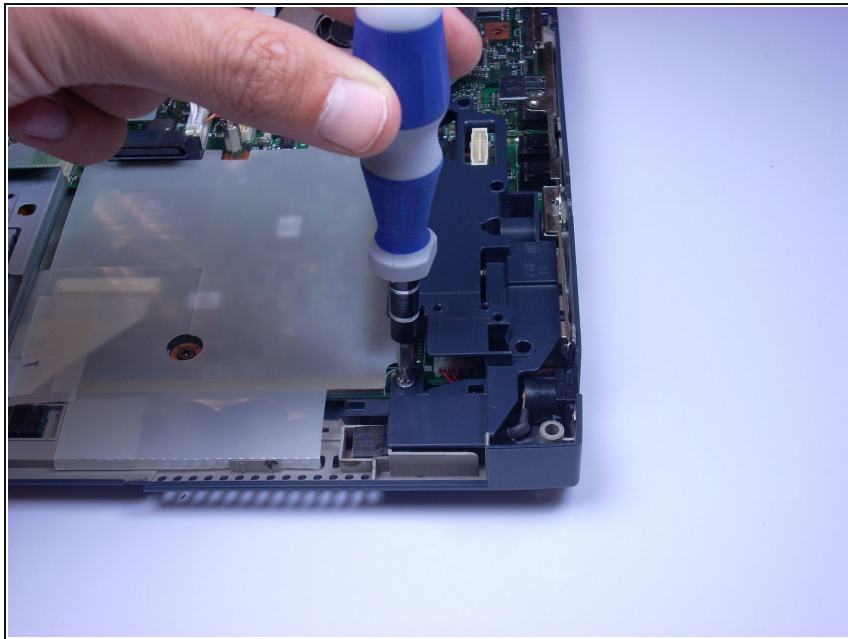
- As shown by the photo, remove the small green computer part by pinching the top with your fingers and gently lift it away from the laptop.

Step 33



- Using your fingers, slowly slide the optical drive out of the laptop, towards you, until you are able to completely lift it away from the computer.

Step 34 — DC Adaptor



- Unscrew and remove single, silver T6 screw.

Step 35



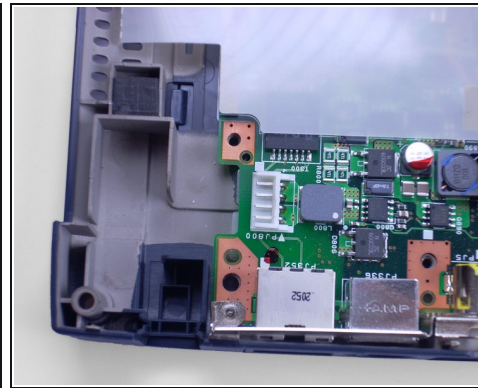
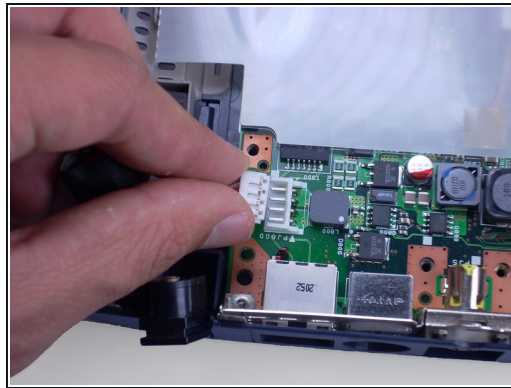
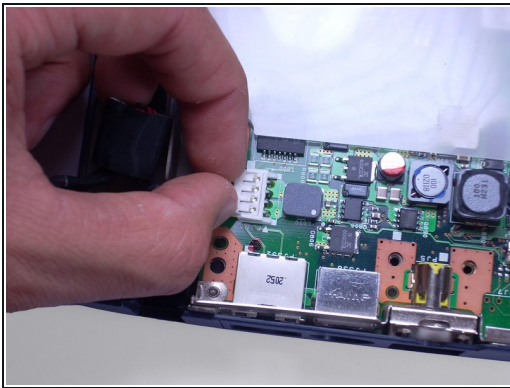
- Remove blue plastic piece by gently pulling away from adaptors on the back of the laptop.

Step 36



- Lift DC adaptor by sliding upwards out of the laptop and hold out of way.

Step 37



- Remove from connector by gently pulling on white connector and cord.

To reassemble your device, follow these instructions in reverse order.