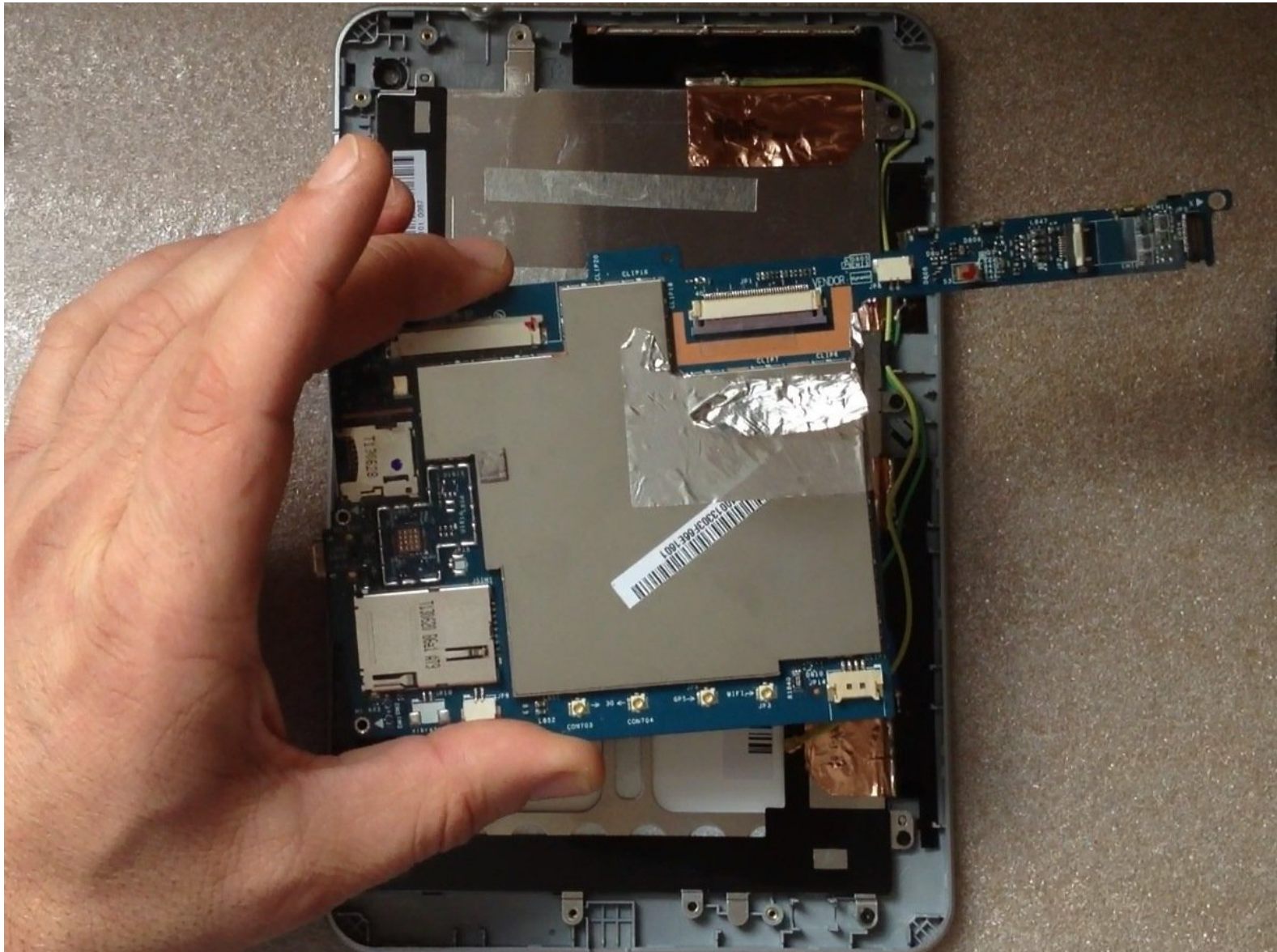




Acer Iconia B1-711 V1-711 Logic Board Replacement

Acer Iconia B1-711 Logic Board Replacement

Written By: ZFix



INTRODUCTION

Acer Iconia B1-711 - How to disassemble the device and replace the Logic Board.

[Please SUBSCRIBE to my channel ツ](#)

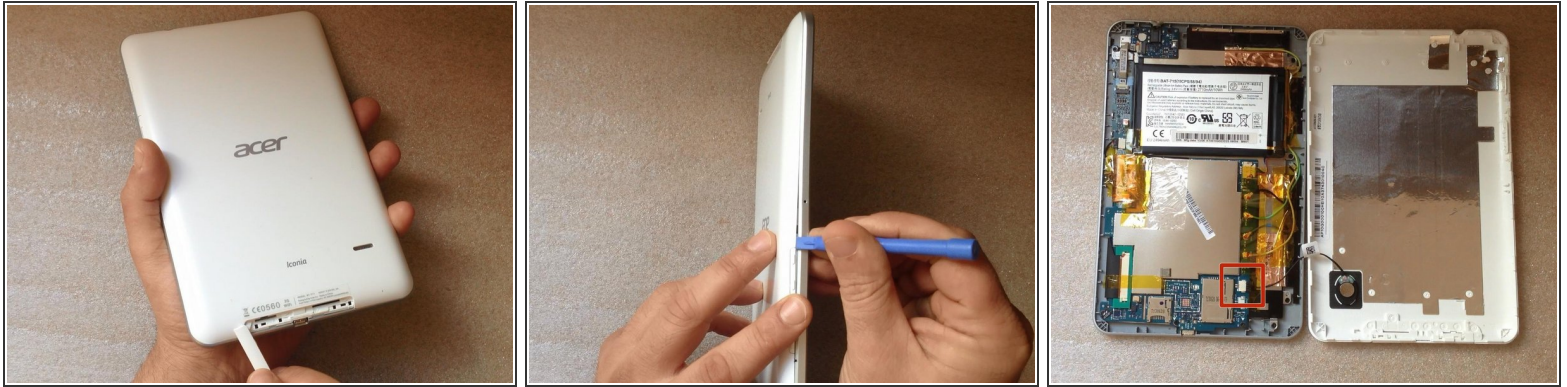
[video: <https://www.youtube.com/watch?v=8-djJ2aXa60>]



TOOLS:

- [Tweezers](#) (1)
 - [Phillips #0 Screwdriver](#) (1)
 - [iFixit Opening Tools](#) (1)
 - [Spudger](#) (1)
-

Step 1 — Back Cover



- Switch-off the tablet.
 - Remove any SIM and/or Memory Card.
 - Start opening near to the Volume Up/Down buttons. It's more well to use a plastic opening tool to avoid damaging the cover.
- ⚠ When lifting the cover, be careful not to tear the Loudspeaker cable at the bottom right side.
- Disconnect the Loudspeaker cable from the Logic board.

Step 2



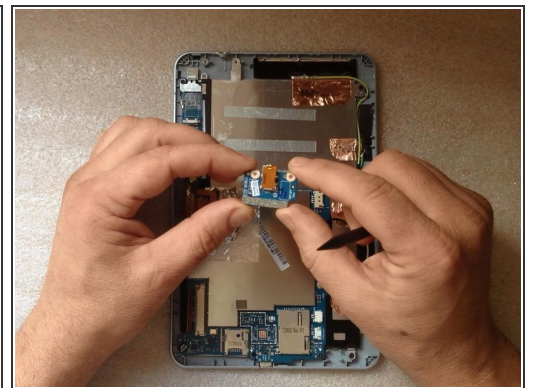
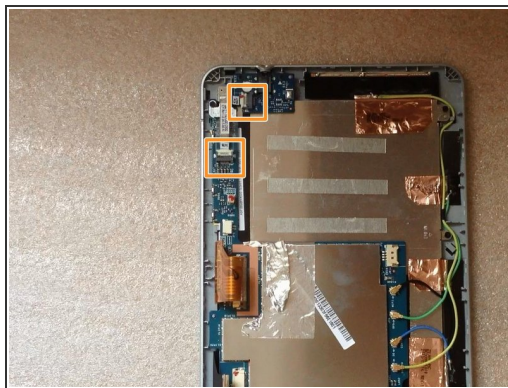
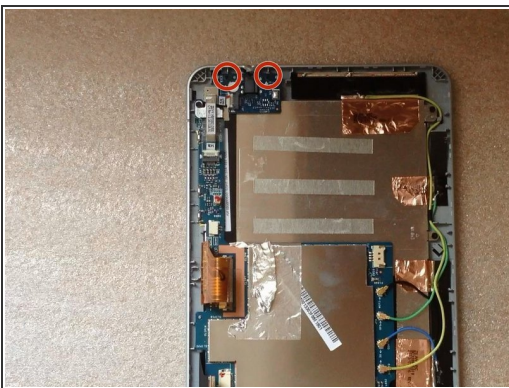
- Before doing anything, disconnect the battery.

Step 3 — Battery



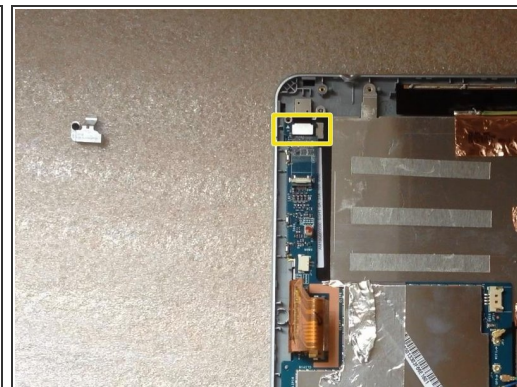
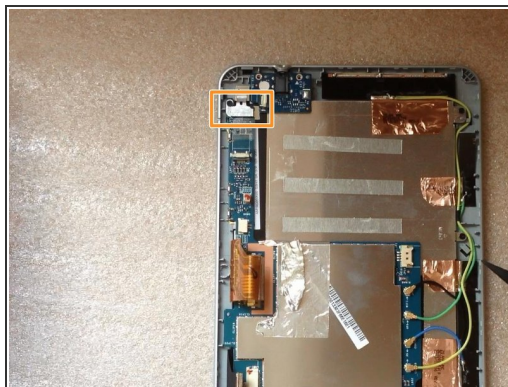
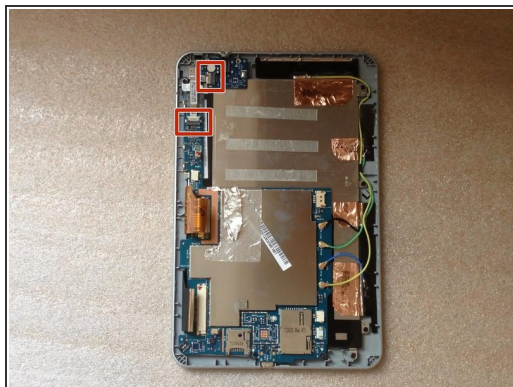
- With a long plastic tool like a spudger, unstick the battery from the metal LCD shield.
- Lithium Ion Battery Pack - 3.8V, 2710mAh

Step 4 — Audio Jack Connector



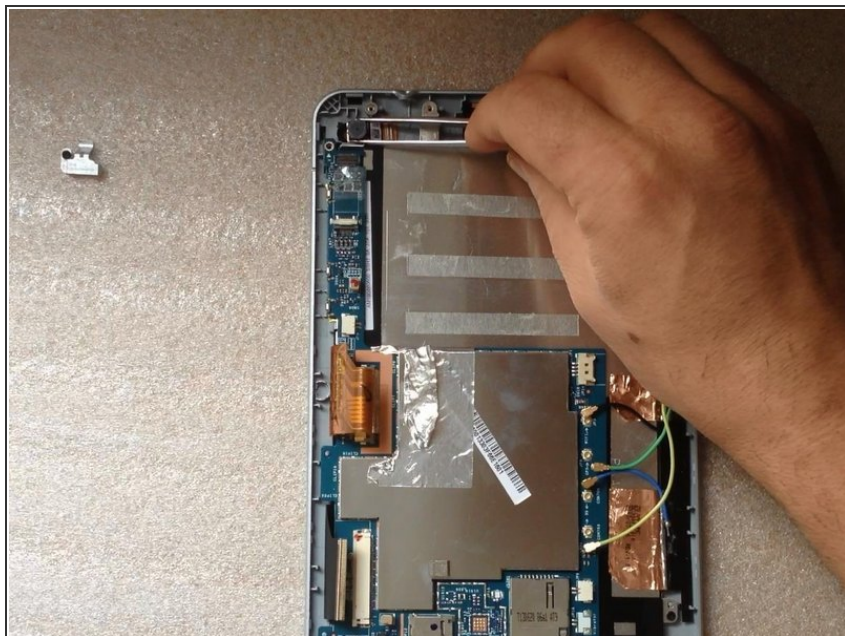
- Unscrew 2x Philips screws
- Disconnect and remove the Audio Jack Board flex cable.
- Remove the board with the Audio Jack Connector.

Step 5 — Camera



- Remove the Audio jack flex cable.
- Remove the metal plate which is placed on the camera connector.
- Disconnect the camera flex cable.

Step 6



- Remove the camera.

Step 7 — Microphone



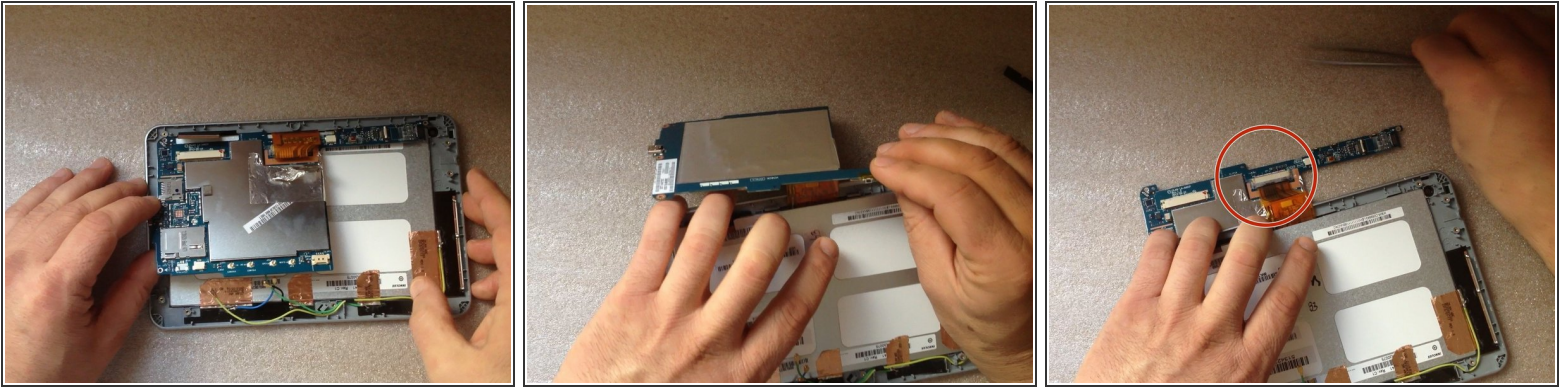
- Remove the tape from the microphone.
- Disconnect the Microphone wires and remove the Microphone.

Step 8 — Logic Board



- Remove the green rubber and disconnect the touch screen flex cable.
- Disconnect the 4 coaxial antenna cables (Wi-Fi, GPS, 3G).
- Carefully unstuck the metal folio from the LCD display flex cable.
- Remove the 3x Phillips screws.

Step 9

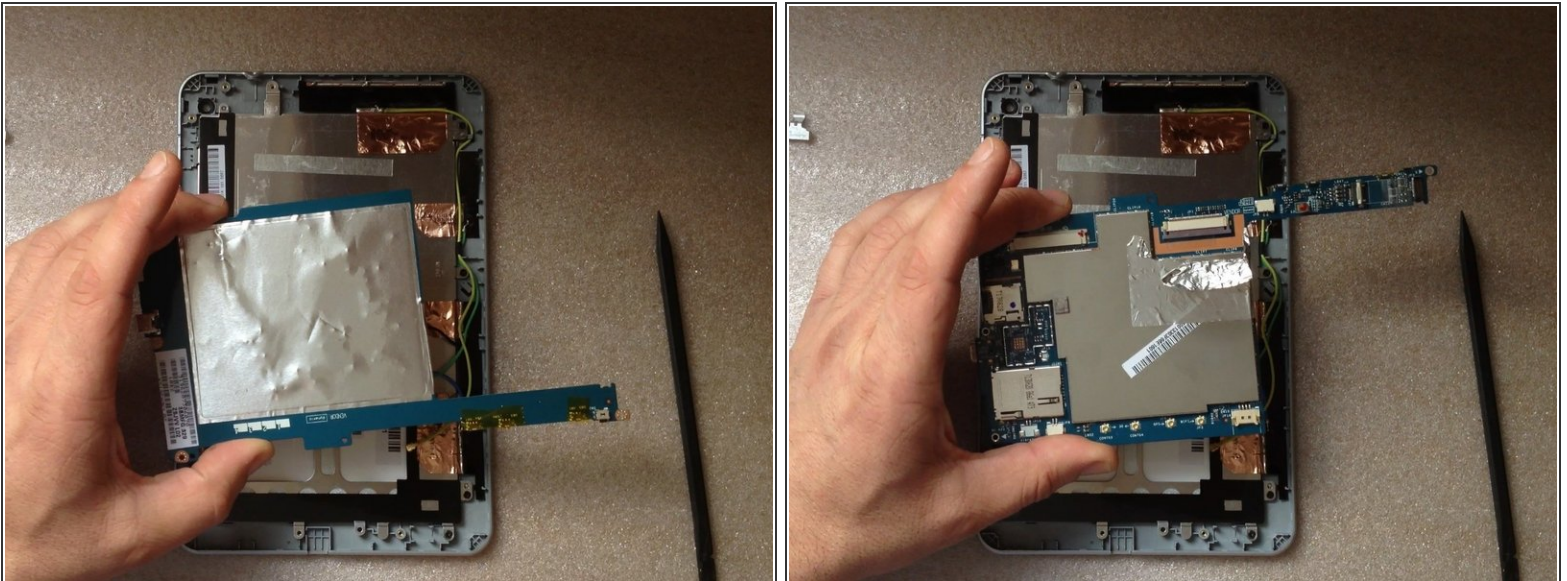


- Lift the board from the side of the battery connector and turn it around the display connector on 360 degrees.

⚠ Be careful for the flex cable!

- Disconnect the LCD display flex cable.

Step 10



- This is the Logic board.

To reassemble your device, follow these instructions in reverse order.