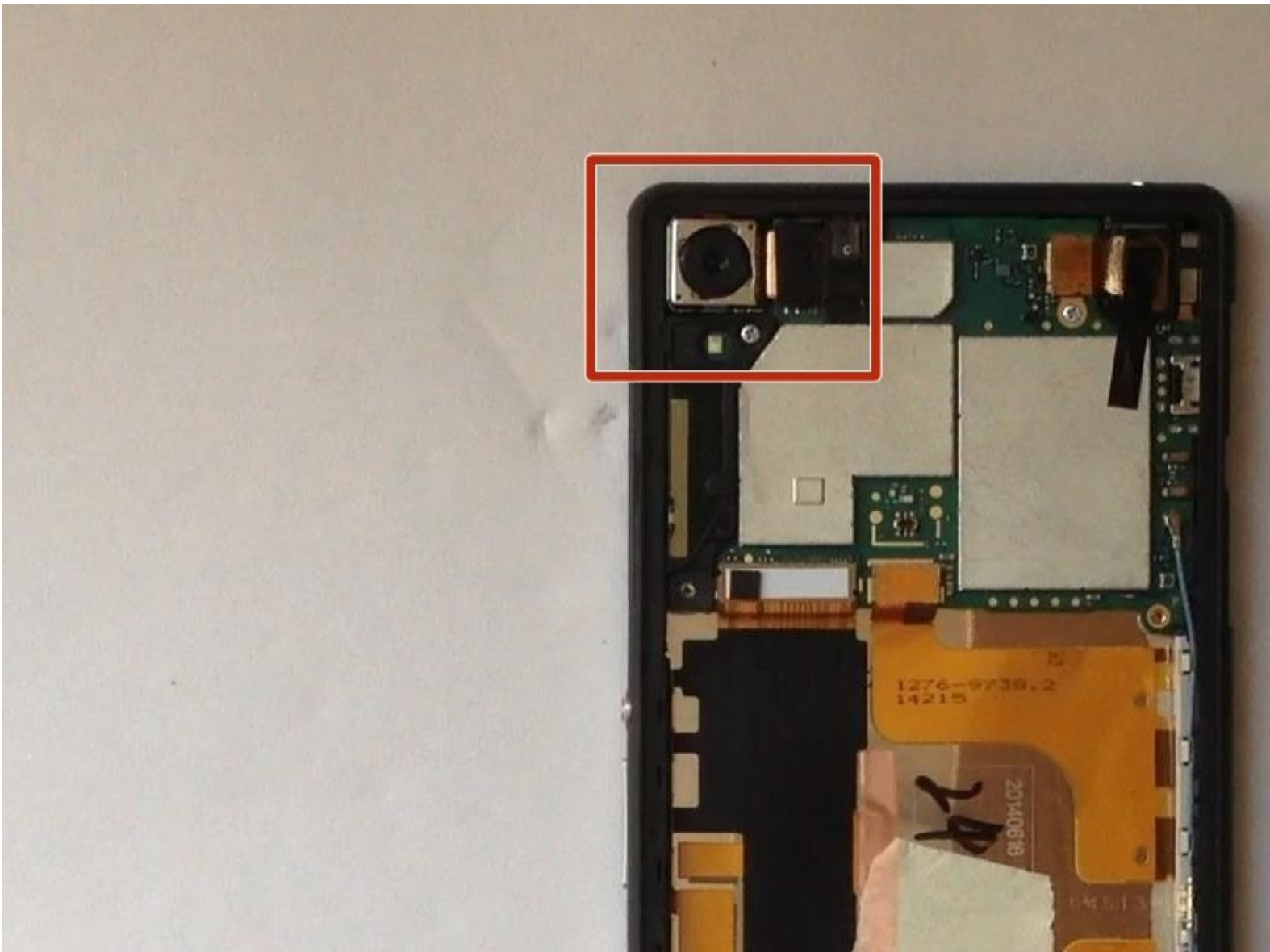




# Sony Xperia Z2 Main Camera Replacement

Sony Xperia Z2 Main Camera Replacement

Written By: ZFix



---

## INTRODUCTION

Sony Xperia Z2 (D6502, D6503, and D6543) - How to replace the Main Camera.

[Please SUBSCRIBE to my channel ツ](#)

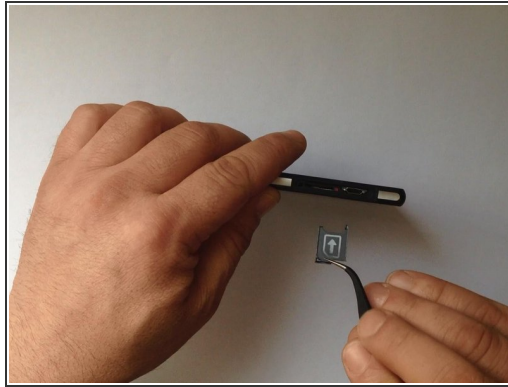
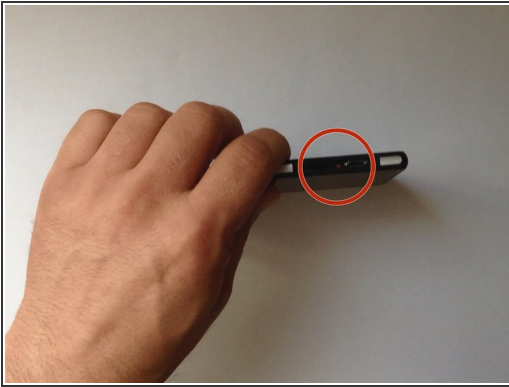
[video: <http://youtu.be/qgkuhEw-CtQ>]



### PARTS:

- [Sony Xperia Z2 Rear Camera](#) (1)
-

## Step 1 — Rear / Battery Cover



- Switch off the phone.
- If you can't switch it off, you can use the OFF button near to the SIM card Tray.
- Warm the Back Cover. You can use a hairdryer.

⚠ Be careful, the Back Cover is plastic.

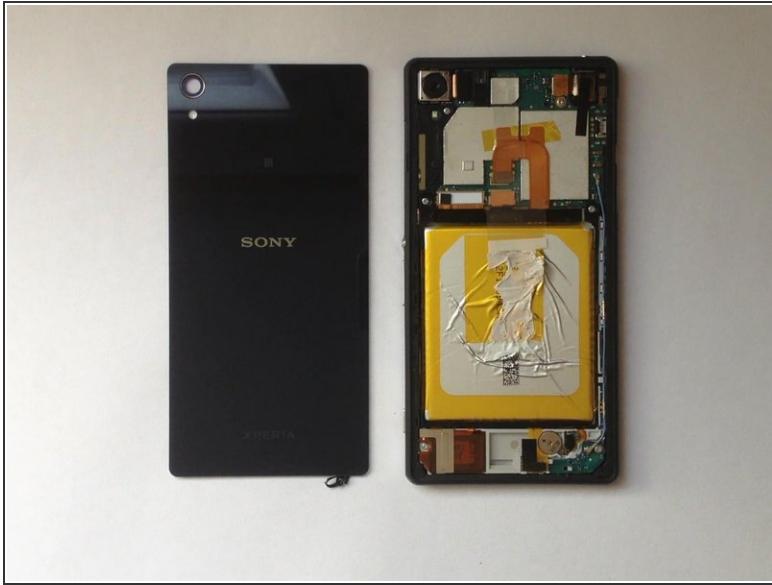
## Step 2



- Use a small suction cup and plastic tools for separating the Rear panel.

⚠ There is Adhesive tape on the edges of the phone and some between the Battery and the Back Cover, as well. I found a small tab to pull just inside the top of the cover that removed the adhesive and released the back panel from the battery. Its that same style adhesive strip as used in the Iphone 5/5c/5s.

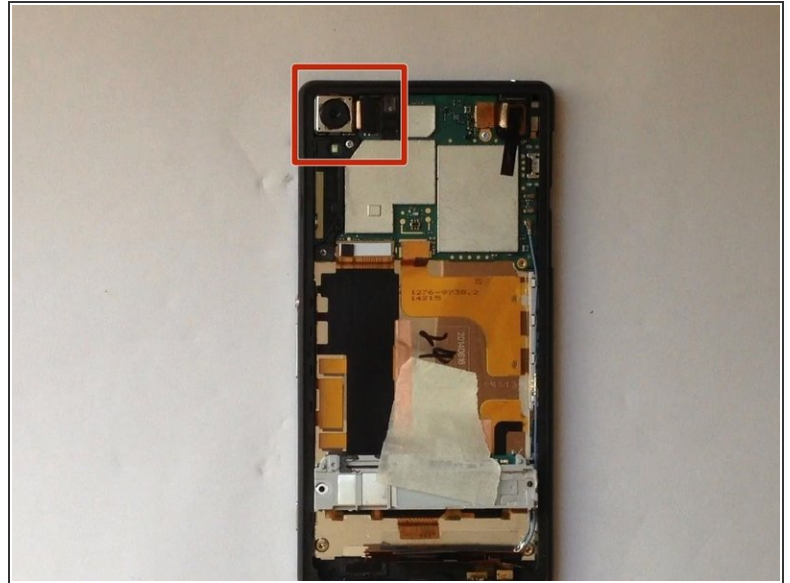
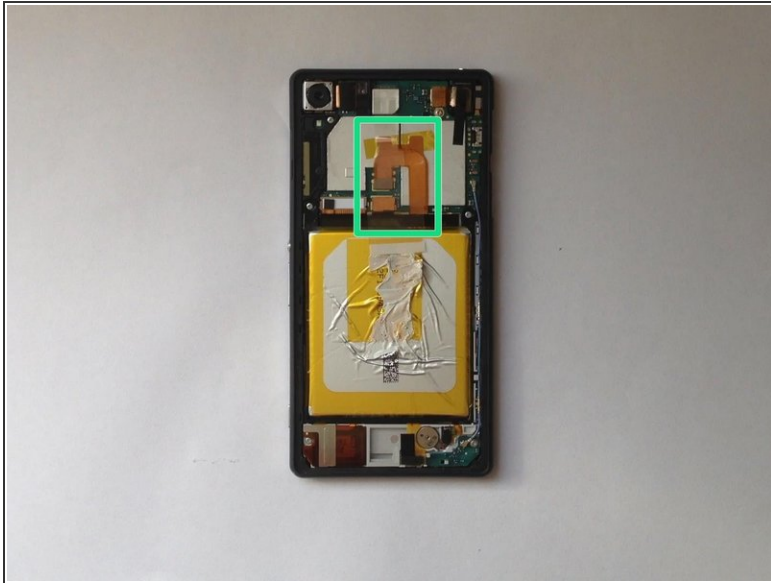
### Step 3



- Before installing the new cover, you must clean the phone from the old adhesive tape and install a new one (if your spare part has come without double sided adhesive tape).



## Step 4 — Main Camera



- Disconnect the Battery.
- Disconnect the Camera from the Logic board and replace it with the new one.
- .



[Please SUBSCRIBE to my channel ツ](#)

To reassemble your device, follow these instructions in reverse order.