



# Sony NWZ-E473 Screen Replacement

This guide will show you how to remove your screen for replacement.

Written By: Matthew Hintz



---

## INTRODUCTION

When removing the screen, you may want to use gloves so that no glass shards cut your hands.

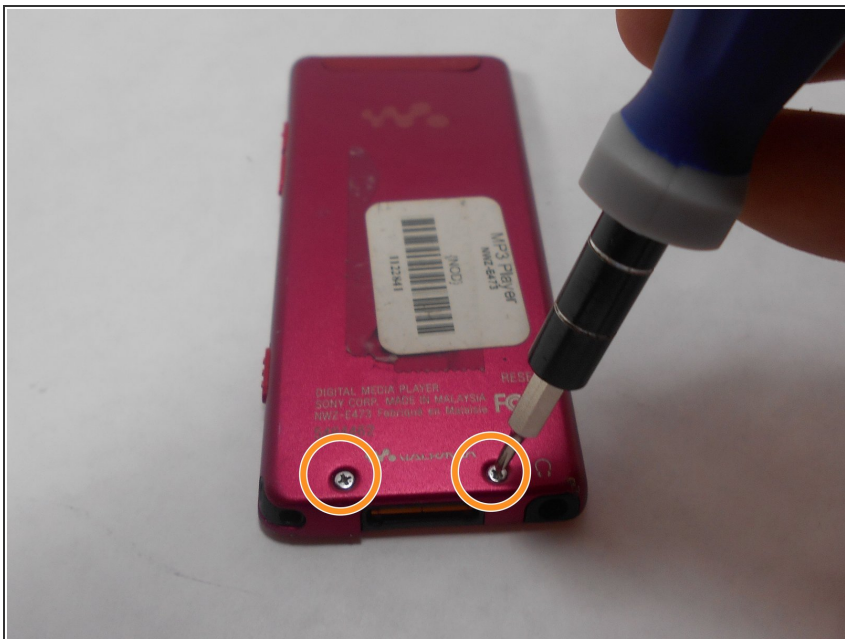
---



### TOOLS:

- [Phillips #00 Screwdriver](#) (1)
  - [iFixit Opening Tools](#) (1)
  - [Tweezers](#) (1)
  - [Spudger](#) (1)
-

## Step 1 — Back Panel



- Use a Phillips #00 screwdriver to unscrew the two 5 mm screws located on the bottom of the back of the device.

## Step 2



- Use a plastic opening tool to loosen the bottom portion of device.

## Step 3



- Use a plastic opening tool to loosen the top panel of the device.

## Step 4



- Use a Phillips #00 screwdriver to remove the two 3 mm screws located on the portion under the top panel of the device.



## Step 5



- Remove the back plate from the device.

## Step 6 — Screen



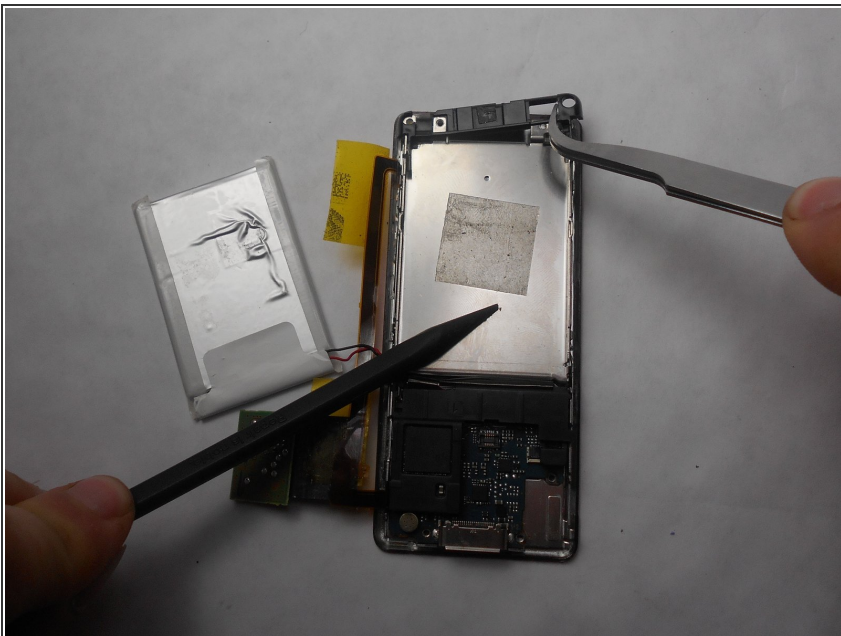
- Use a nylon spudger or tweezers to remove the plastic USB cover.

## Step 7



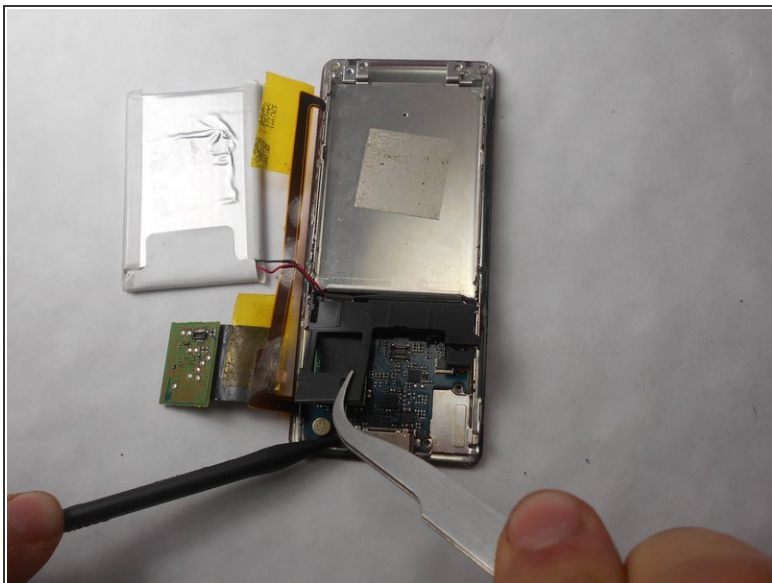
- Use a Phillips #00 screwdriver to unscrew two 2 mm screws located on the top corners of the device.

## Step 8



- Use a nylon spudger or tweezers to remove the plastic protective plate at the top of device.

## Step 9



- Remove the plastic protective frame located over the motherboard with tweezers and a spudger.

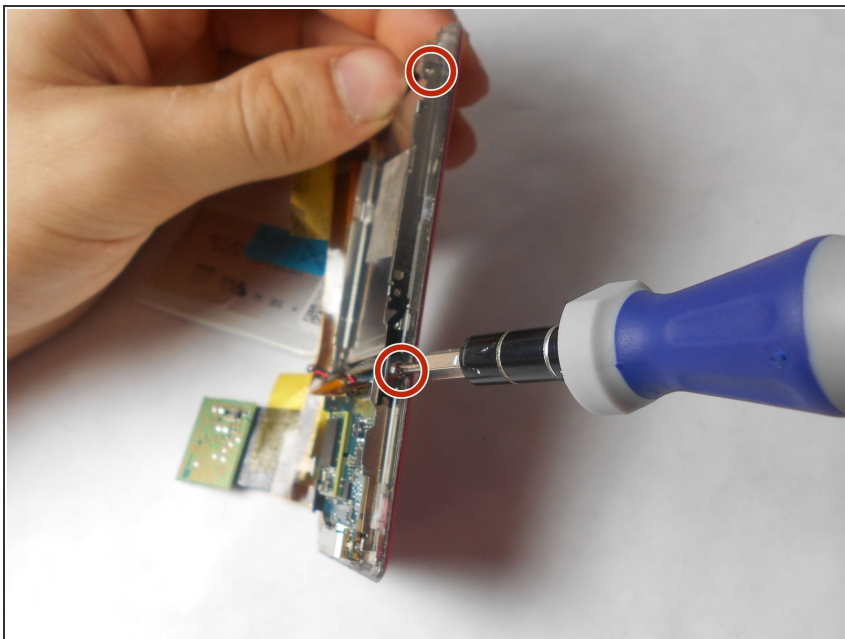
## Step 10



- Remove screen connection from motherboard using tweezers and spudger.

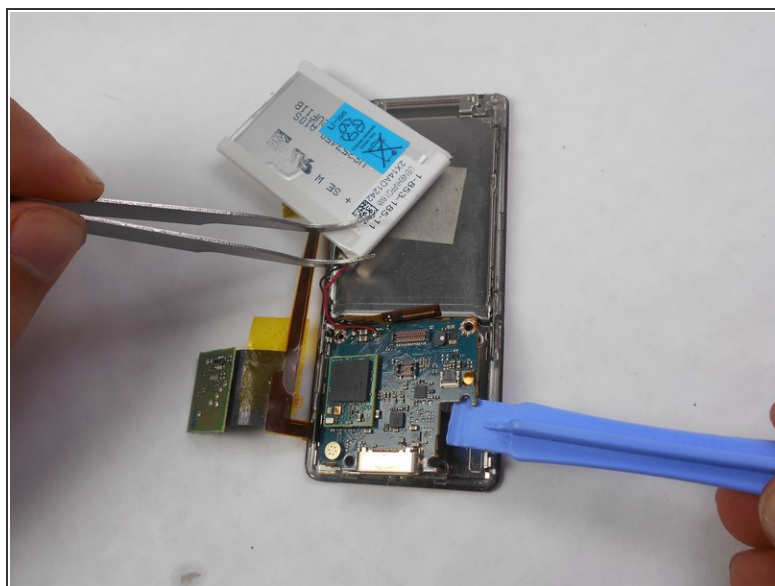


## Step 11



- Use a Phillips #00 screwdriver to remove two 3 mm screws at the bottom sides and two 1 mm screws at top sides of the device.

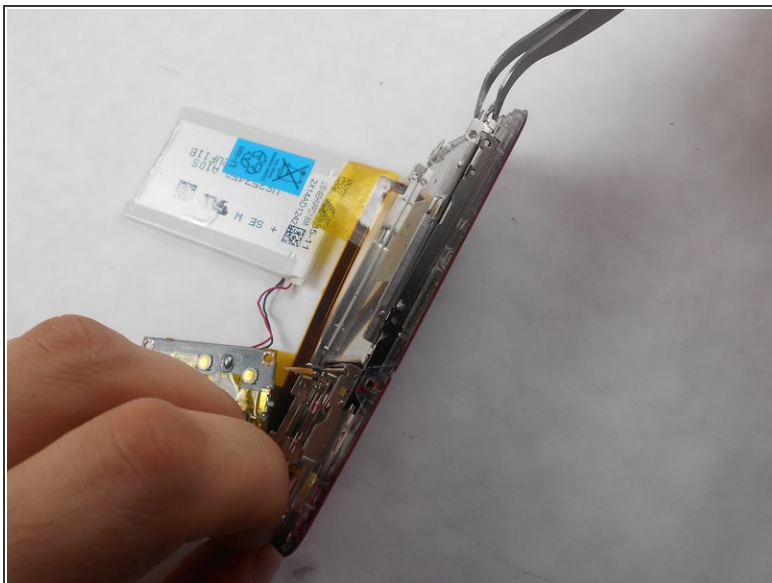
## Step 12



- Use a Phillips #00 screwdriver to unscrew two 2 mm screws, and remove the motherboard from the device with tweezers and a plastic opening tool.

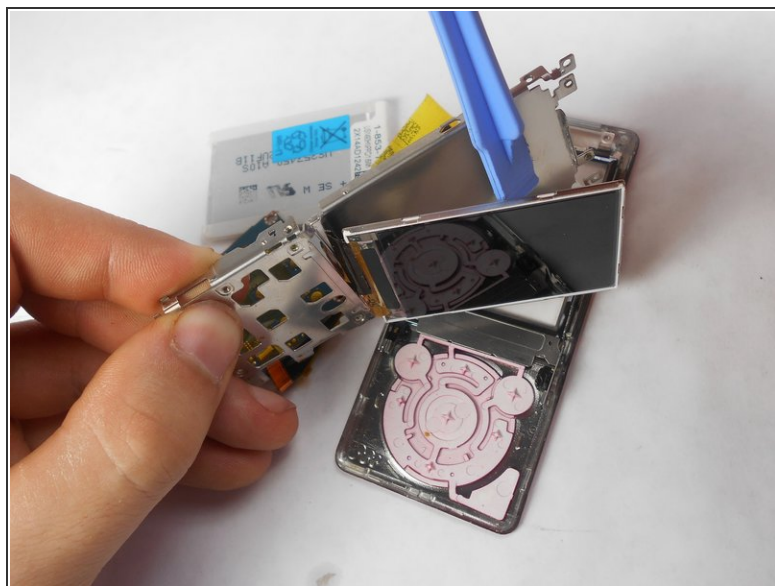
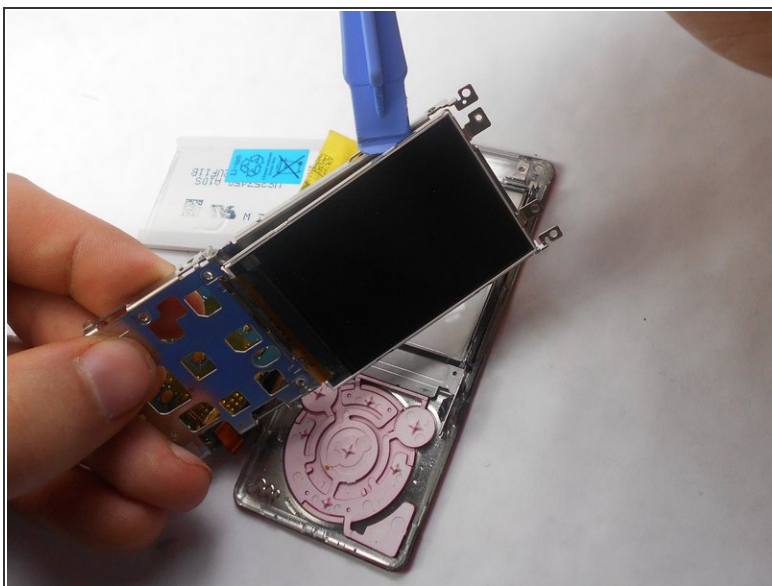


## Step 13



- Disconnect the metal shielding plate from the front panel with tweezers or a plastic opening tool.

## Step 14



- Use a plastic opening tool to remove the screen from metal back plate.

To reassemble your device, follow these instructions in reverse order.