



# Samsung NX300 Jog and Mode Dial Replacement

After removing the back panel assembly, remove the top panel and replace the power switch board as well as the dials on the top of the NX300.

Written By: Andres Perez



---

# INTRODUCTION

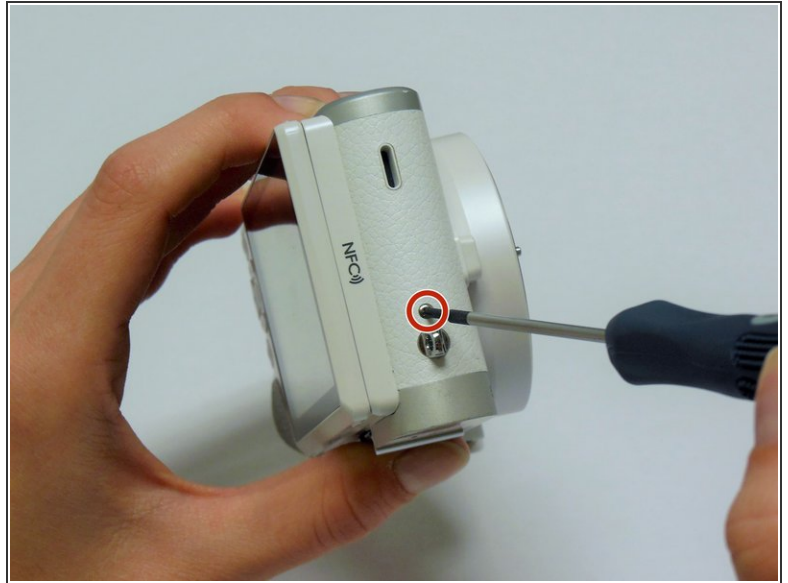
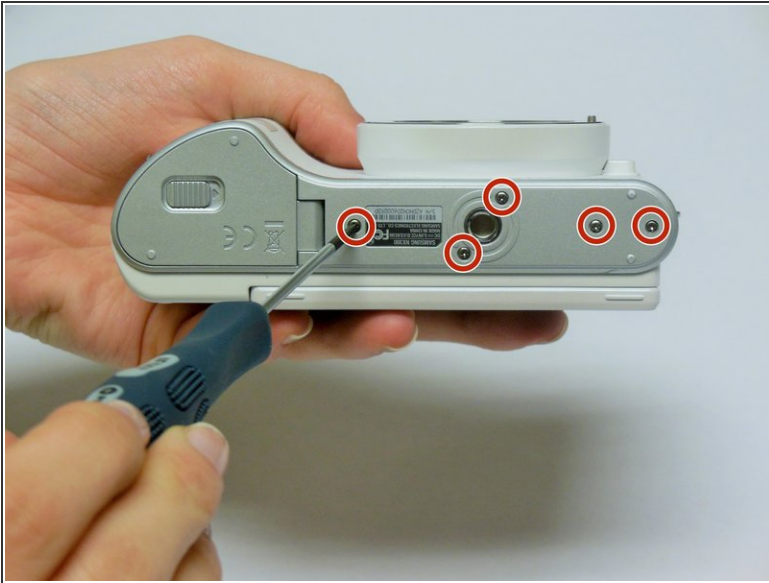
This guide will show you how to replace the jog and mode dials on the top panel assembly of the NX300.



## TOOLS:

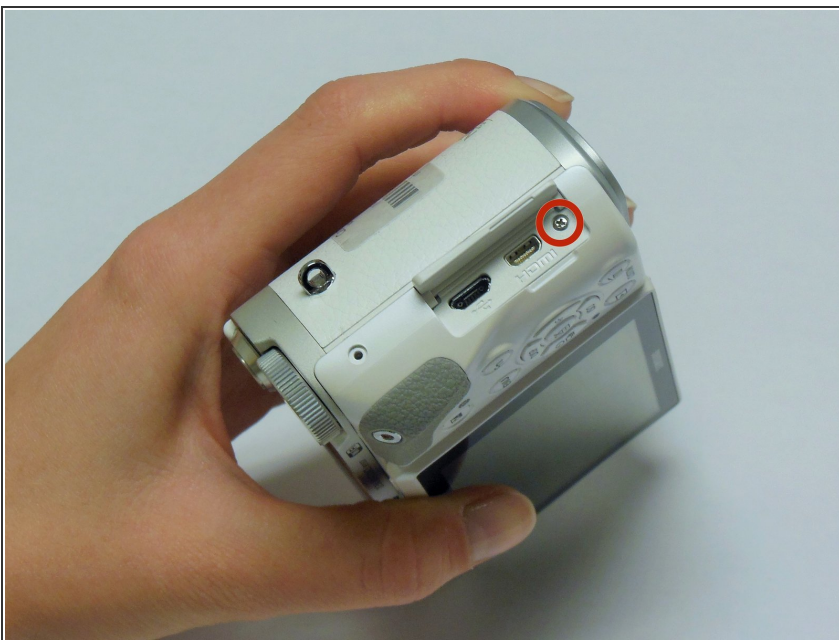
- [Phillips #00 Screwdriver](#) (1)
  - [iFixit Opening Tool](#) (1)
  - [Tweezers](#) (1)
-

## Step 1 — Unscrew the Back Panel



- Using a Phillips #00 precision screwdriver, remove the seven 4mm screws (5 on the bottom of the device and 1 on each of the two sides) holding the back panel to the camera.
- ⓘ On the NX300M model, there is an additional screw under the text AMOLED behind display which should be removed before detaching the back panel of the camera.

## Step 2 — Remove the Input Port Screw



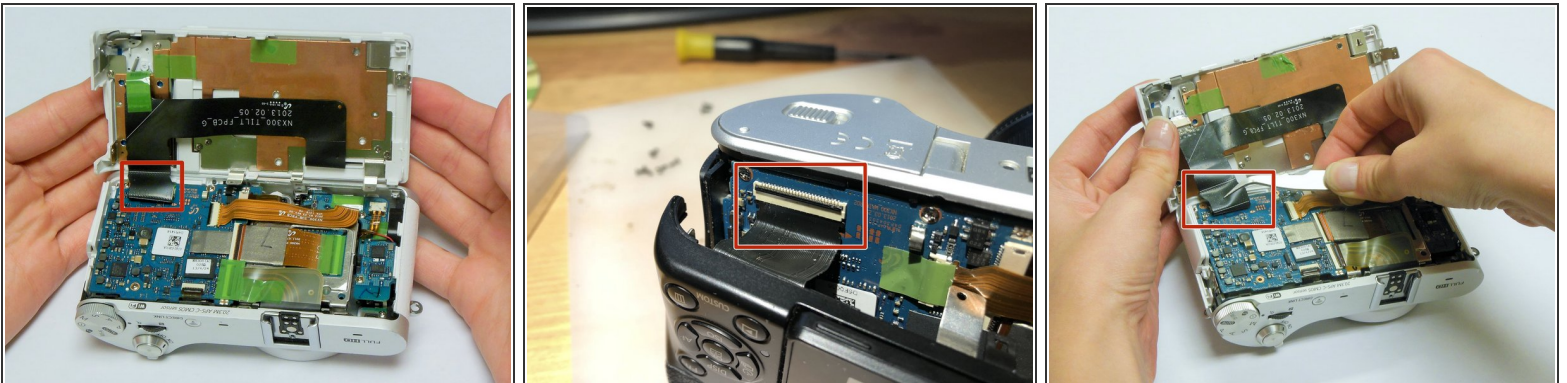
- Using a Phillips #00 precision screwdriver, remove the last 4 mm screw located inside the input ports' compartment.

### Step 3 — Open the Camera Casing



- Place a plastic opening tool into the gap between the back panel and camera body, from both the top and the bottom of camera. Carefully pry open the camera and separate the back panel.

### Step 4 — Remove the Back Panel



- Using tweezers or your fingers, pull the display's black ribbon from the motherboard. This frees the back panel altogether.
- ⓘ To safely remove ribbons, you would need to first unlock the holding mechanism by lifting up the black strip atop the ribbon adapter.

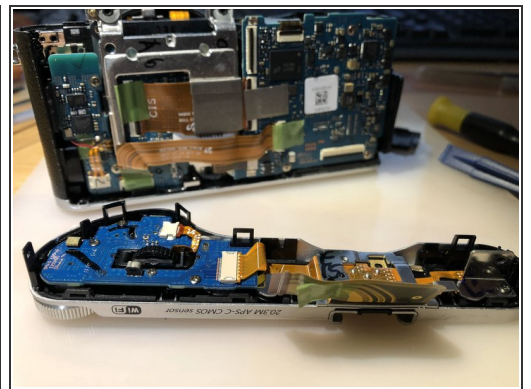
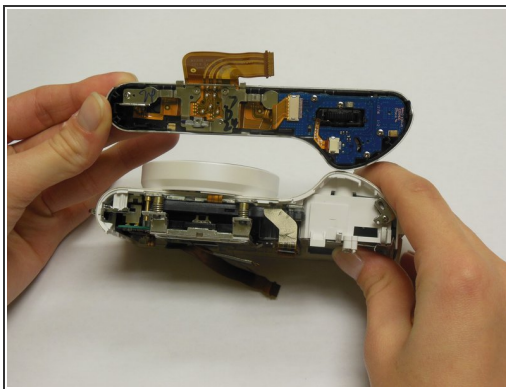
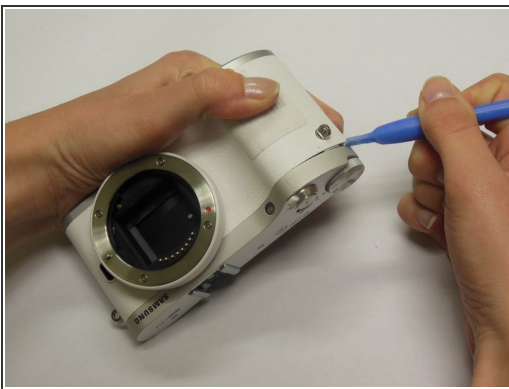


## Step 5 — Remove Mounting Screw



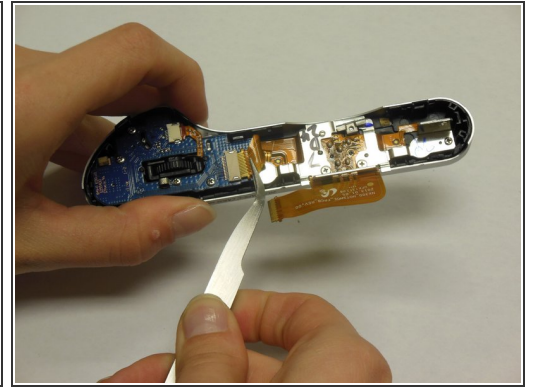
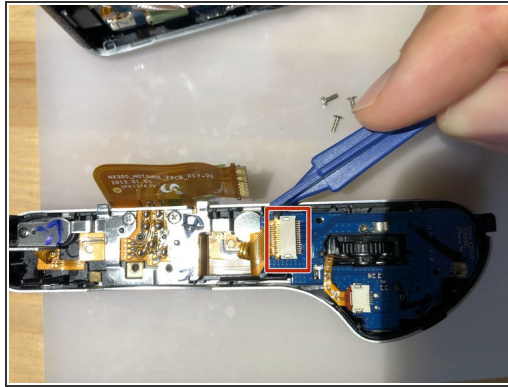
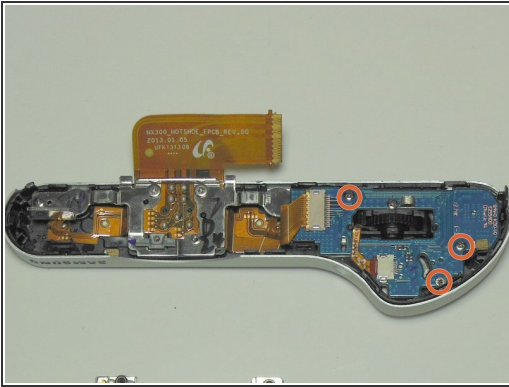
- Using a Phillips #00 precision screwdriver, remove the 3mm screw holding the top panel of the camera in place. Also, remove the screws under hot shoe metal clip, otherwise you can break a piece of sensor frame leading to costly repair.

## Step 6 — Remove the Top Panel of the Camera



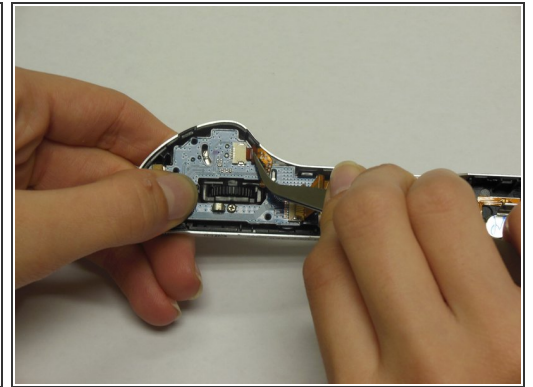
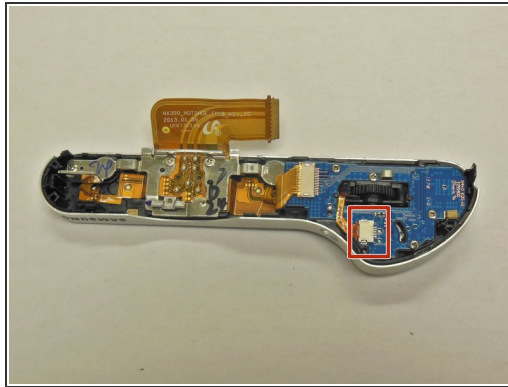
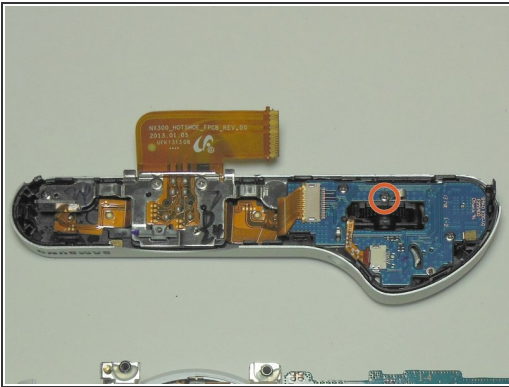
- Using a plastic opening tool, carefully remove the top panel of the camera.
- ⓘ The top panel is held in by plastic clips. Be careful not to break these clips in removal.

## Step 7 — Remove the Power Switch Board



- Using a Phillips #00 precision screwdriver, remove the three 4mm screws holding the power switch board in place.
- Using tweezers, gently pull the ribbon cable out of the power switch board.

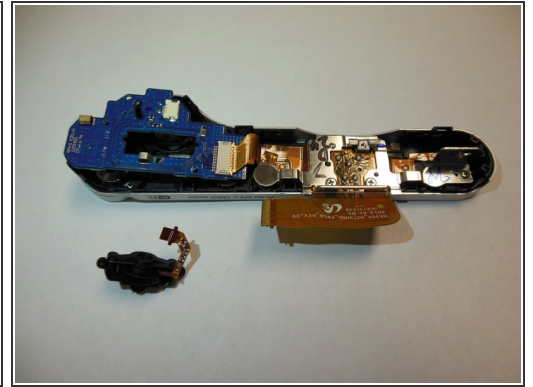
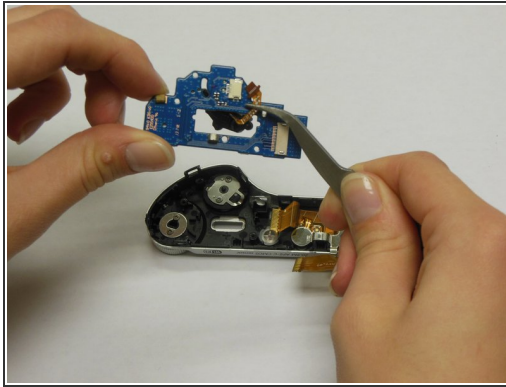
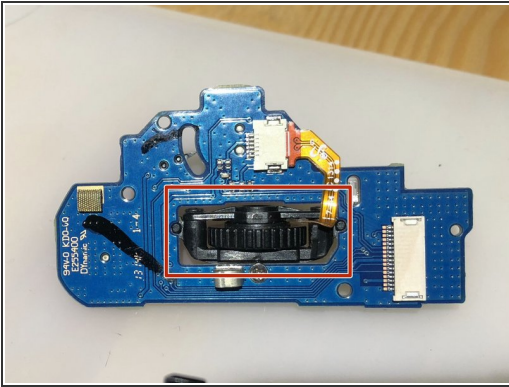
## Step 8 — Remove the Jog Dial



- Using a Phillips #00 precision screwdriver, remove the 4mm screw holding the jog dial in place.
- Using tweezers, gently remove the ribbon cable attached to the jog dial.

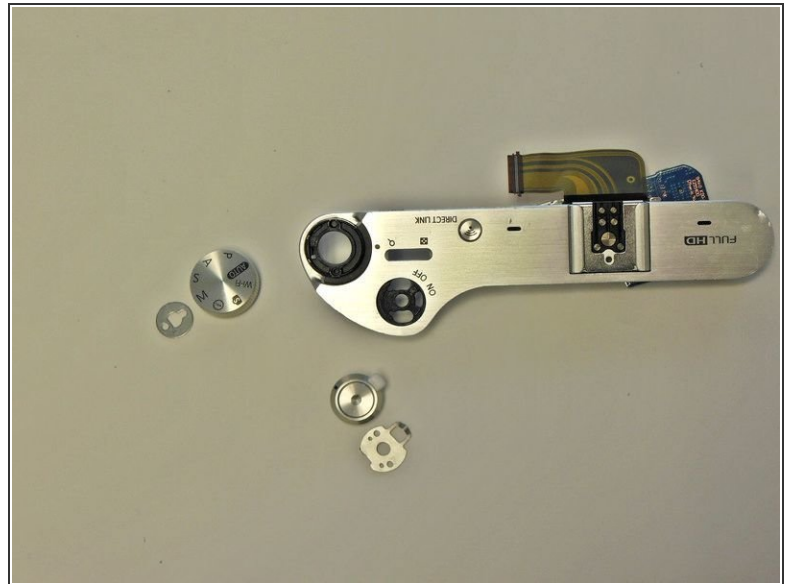
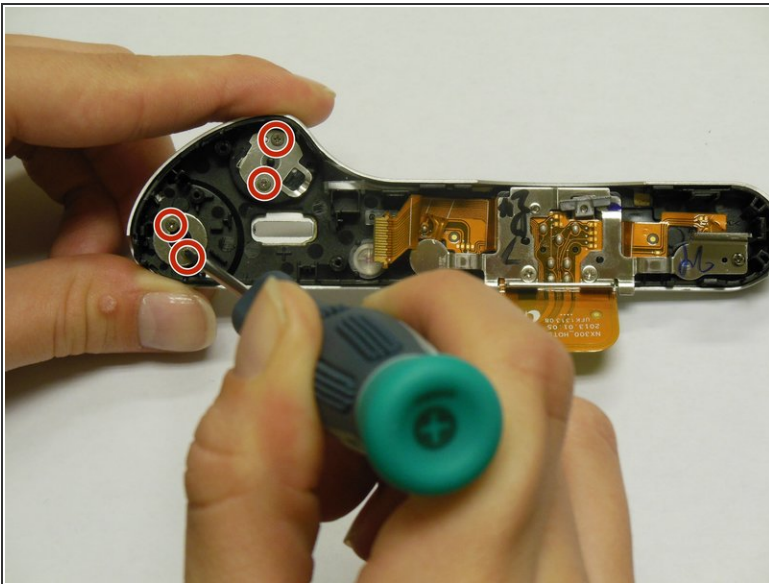


## Step 9 — Remove the Connecting Ribbon



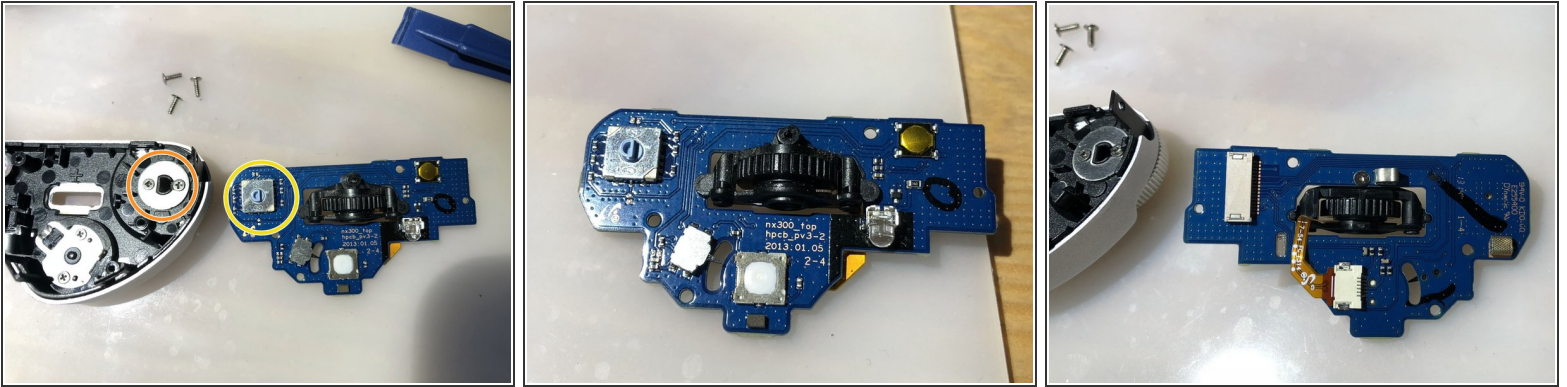
- The jog dial should fall out easily. If not, use a pair of tweezers to gently poke it through the power board.

## Step 10 — Remove the Buttons



- Using a Phillips #00 precision screwdriver, remove the four 3mm screws holding the mode dial and power switch/shutter button in place.
- Remove the metal mounts from the underside of the dials. The dials are now free from the camera.

## Step 11 — Check the Dial Alignment



- ✦ Make sure the dial slot aligns with the power switch board prior to reassembly.

To reassemble your device, follow these instructions in reverse order.