



Canon PowerShot A3400 LCD Display Replacement

This guide should help you remove the LCD Display for replacement purposes.

Written By: Matt Mullins



INTRODUCTION

Replacing the LCD Display should be done when the display has been damaged or it has been determined that the LCD is no longer functioning. This will take some time. Handle the display with care once you reach the component as it is attached to several other vital components.



TOOLS:

- [Phillips #000 Screwdriver](#) (1)
 - [Spudger](#) (1)
-

Step 1 — Battery



- Place thumb on area right next to where it says open and slide to the right to open.

Step 2



- Remove the battery by pushing the orange object outwards; the battery will spring up and out.

Step 3 — Plastic Case



- Remove the two 5.00 mm screws in the bottom of the casing with a Philips #000 screwdriver

Step 4



- Place the camera on to the side that has the image stabilizer label.
- Remove the 5.00 mm screws that are on this side using the screwdriver.

Step 5



- Place camera on to the side with the A/V Out Digital Cover facing up.
- Remove this visible 5.00 mm screw.
- Pull the A/V Out Digital cover back to uncover the next step.

Step 6



- Remove the 5.00 mm screw from behind the cover.

Step 7



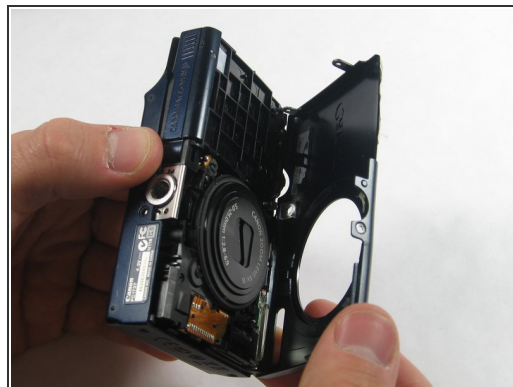
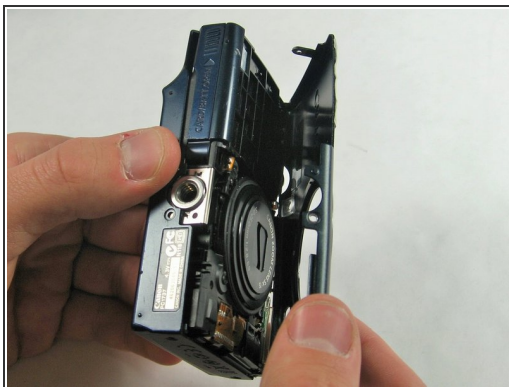
- Make sure the battery cover is open.

Step 8



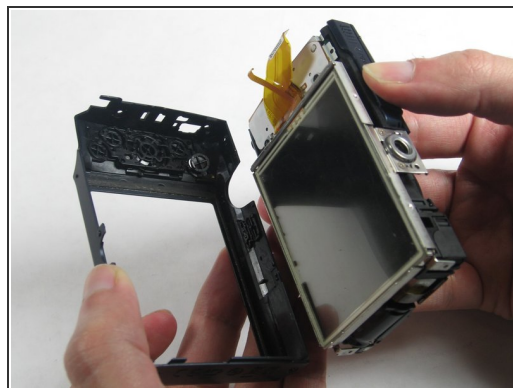
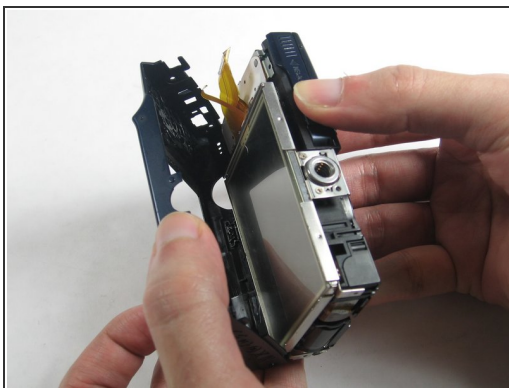
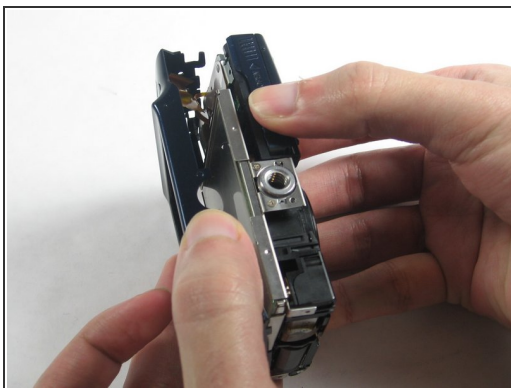
- Turn the camera onto the side with the A/V out Digital cover.
- Use your finger to pull this tab to the right.

Step 9



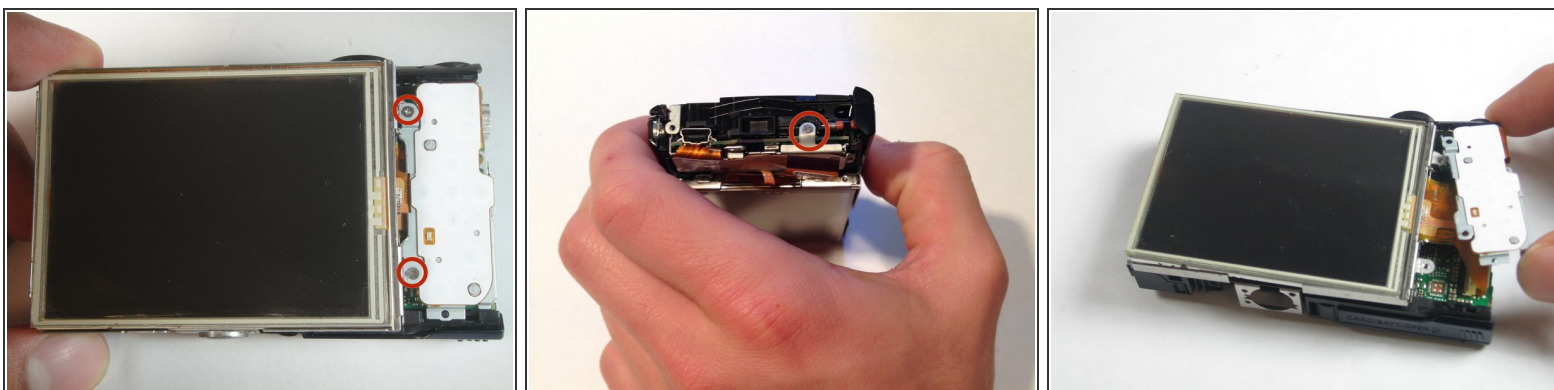
- Remove the lens side by using your fingers or a spudger to pry it gently open.
- ⓘ Try to pry it loose all around that side so that it is easier to pull off.

Step 10



- Using your fingers, pull the screen side gently off.
- ⓘ Try to loosen it all around that side so that it is easier to try and pull it off.

Step 11 — Lens



- Remove the three 5 mm screws

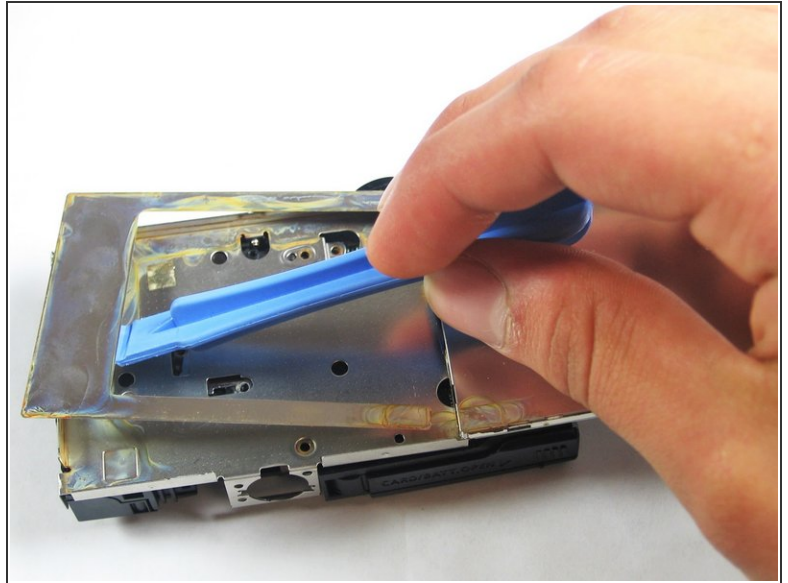
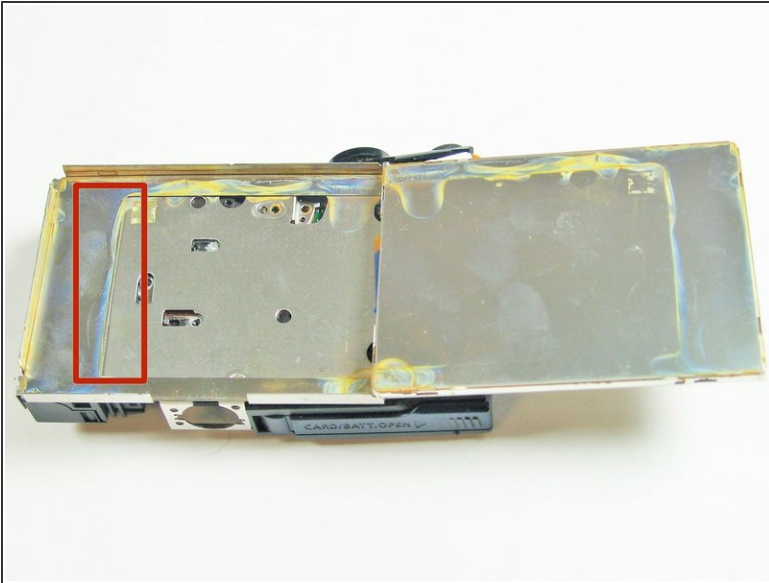
Step 12



- Pull the screen away from the main components.

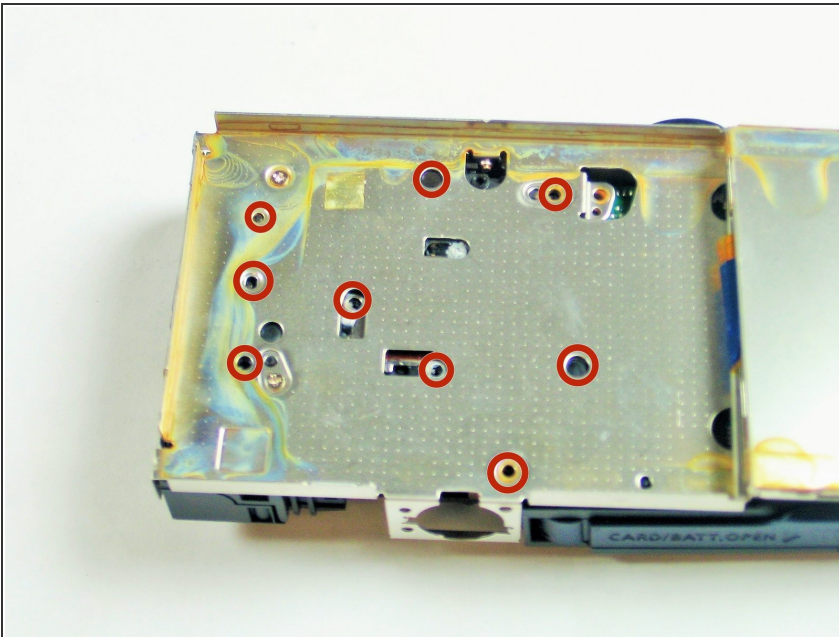
⚠ Do not pull hard as there are some ribbons still attached to the motherboard that could be damaged if you use too much force.

Step 13



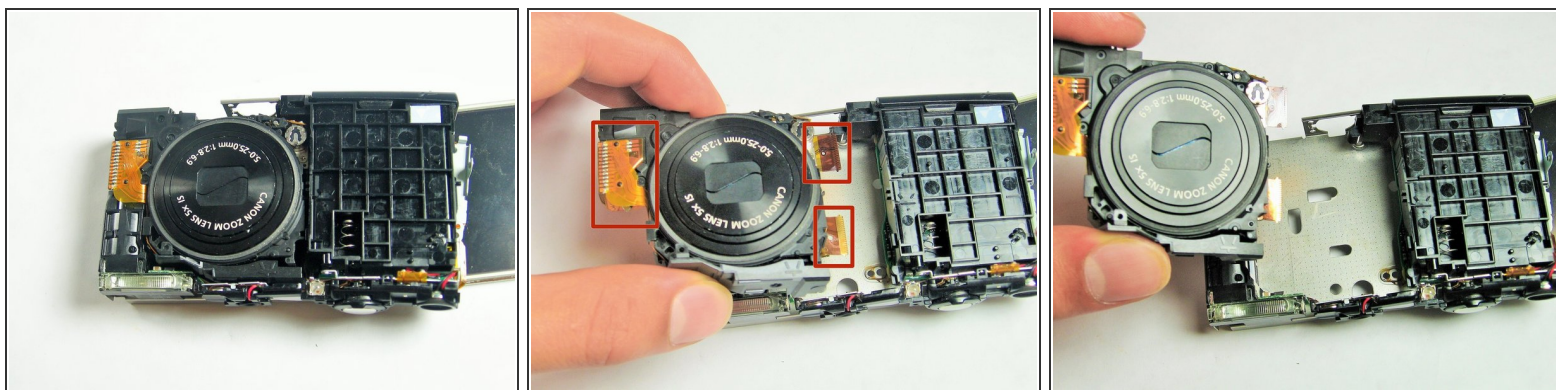
- Lift the metal plate with the plastic opening tool.

Step 14



- Remove all of these 5 mm screws

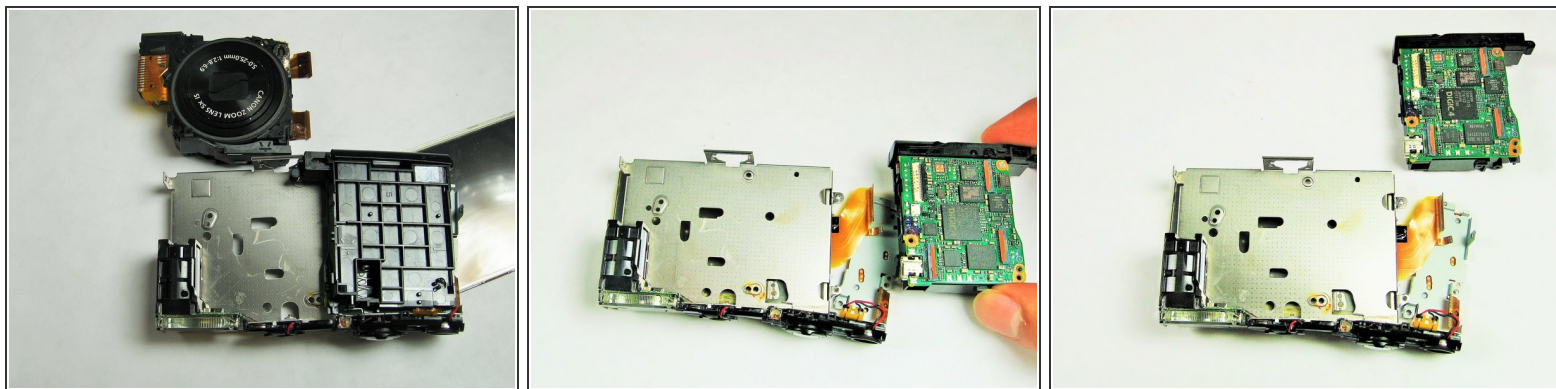
Step 15



- Gently remove the lens component.

⚠ The orange flex cables are connected to [ZIF connectors](#). Be sure to disconnect and reconnect them properly by first unlocking the retaining flap on each connector.

Step 16 — LCD Display



- Detach the Motherboard, and then gently pull the motherboard away from the screen.

To reassemble your device, follow these instructions in reverse order.