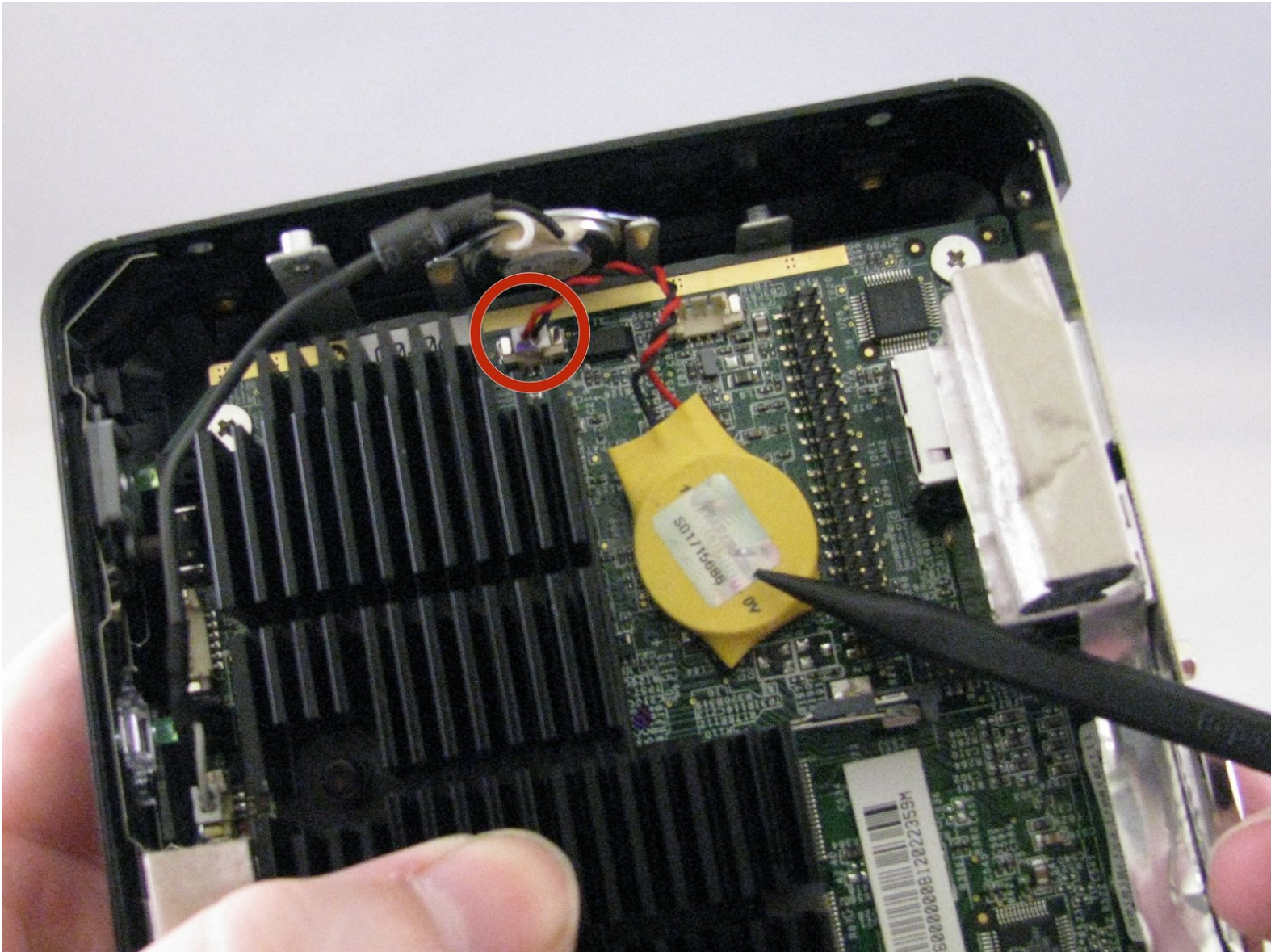




# Dell OptiPlex FX170 CMOS Battery Replacement

Replace the CMOS battery to help solve system time issues.

Written By: Frank Pecka



---

## INTRODUCTION

You should be familiar with the basics of taking apart a computer take apart, specifically in terms of preventing further damage due to electro-static discharge (ESD).

---

### TOOLS:

- [Phillips #0 Screwdriver](#) (1)
  - [Spudger](#) (1)
-



## Step 1 — Case



- With the base stand facing upwards, unscrew the 6mm Phillips #2 screw.
- Pull the base stand straight up from the device.

## Step 2




- Unscrew and remove the eight 4mm Phillips #0 screws (four on top, four on bottom) from the top and bottom of the device.

## Step 3



- Run the flat side of the spudger along the entire line of the case starting from the back where the power plug and a small screw are located.

 Use care to not apply excessive force that could damage retaining clips while running the spudger along the case.

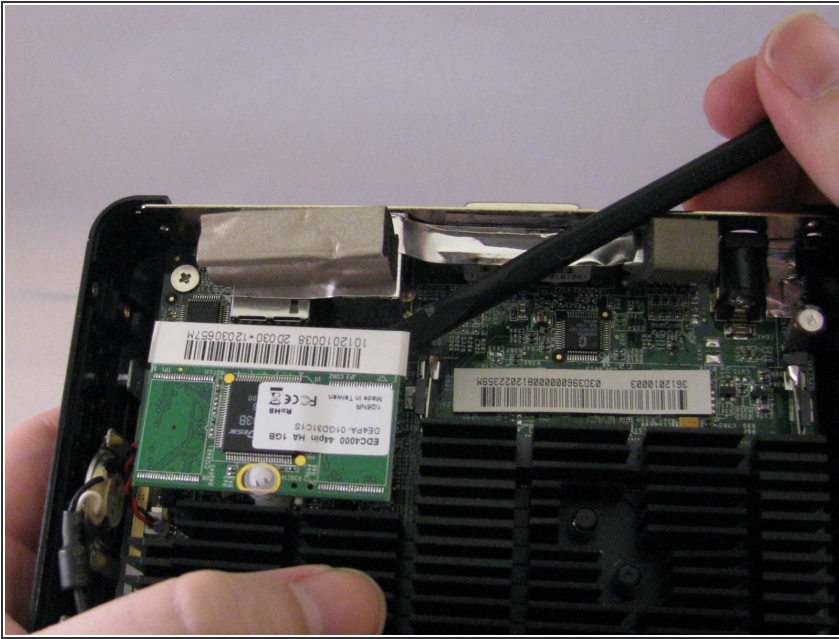
## Step 4



- Once the clips have been released, gently disengage the cover from the rest of case by pulling in opposite directions.

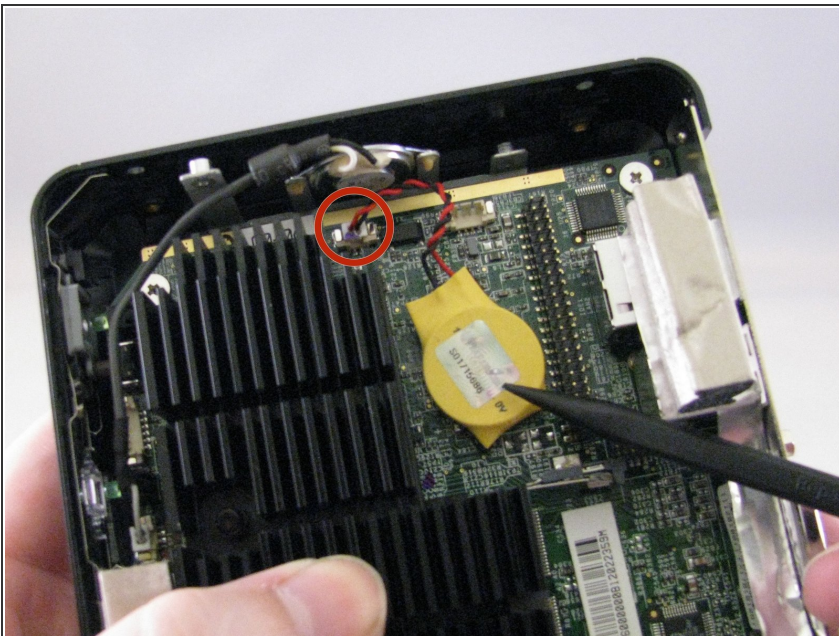


## Step 5 — Memory Board



- Using the spudger, gently push on the underside of the memory board to loosen it. Gently grasp each side and pull up to release the memory board.

## Step 6 — CMOS Battery



- To remove the battery, pull up on the connector that is plugged into the motherboard.

To reassemble your device, follow these instructions in reverse order.