



# Nikon Coolpix P100 Back Buttons Replacement

If you have a jammed button or if you simply...

Written By: Nghiem Ngo



# INTRODUCTION

If you have a jammed button or if you simply want to replace a part on your Nikon Coolpix P100 camera, then this guide is perfect for you! This guide will help users easily replace a broken back button on your Nikon Coolpix P100 camera. The only required tools you need are a Phillips #00 Screwdriver and a iFixit Opening Tool.

Before using this guide make sure that the camera is powered off!

---

## TOOLS:

[Phillips #00 Screwdriver](#) (1)

[iFixit Opening Tool](#) (1)

---

## Step 1 — Back Buttons



- Turn the front of the camera toward you.

## Step 2



- On the left side of the camera, remove two screws using a Phillips #00 screwdriver.

## Step 3



- On the right side of the camera, remove the first visible screw.

## Step 4



- Lift the HDMI and A/V OUT cover to access the hidden screw.

## Step 5



- Flip the camera upside down and remove the seven marked screws.



## Step 6



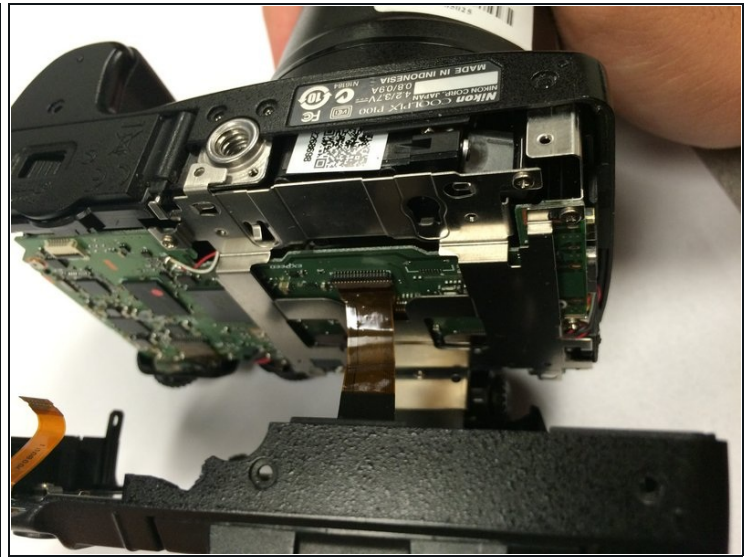
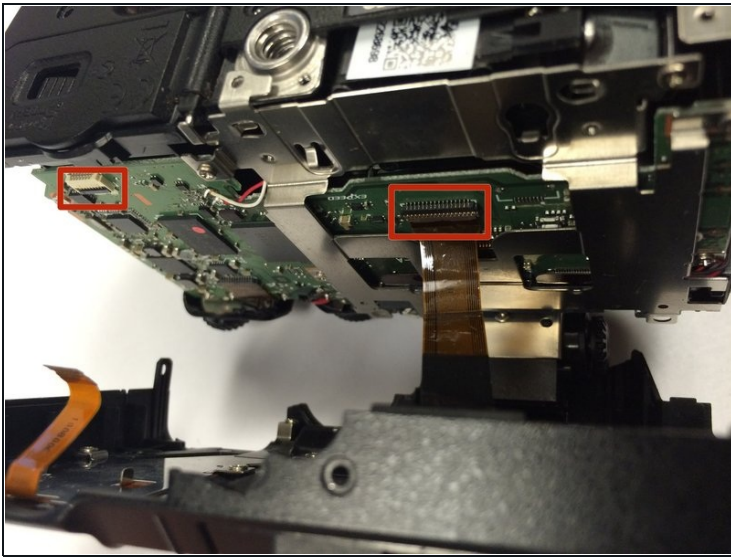
- Remove the two screws hidden underneath the display panel.

## Step 7



- Use a plastic opening tool to gently loosen up the sides of the camera.

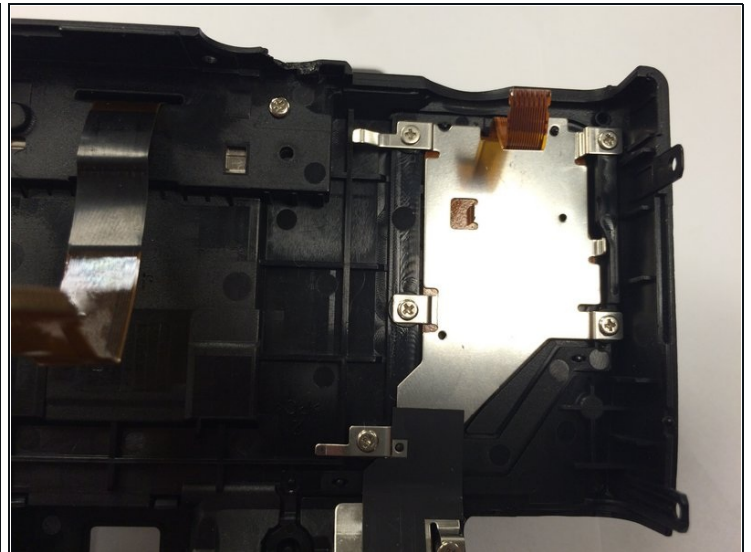
## Step 8



- Carefully open the camera.

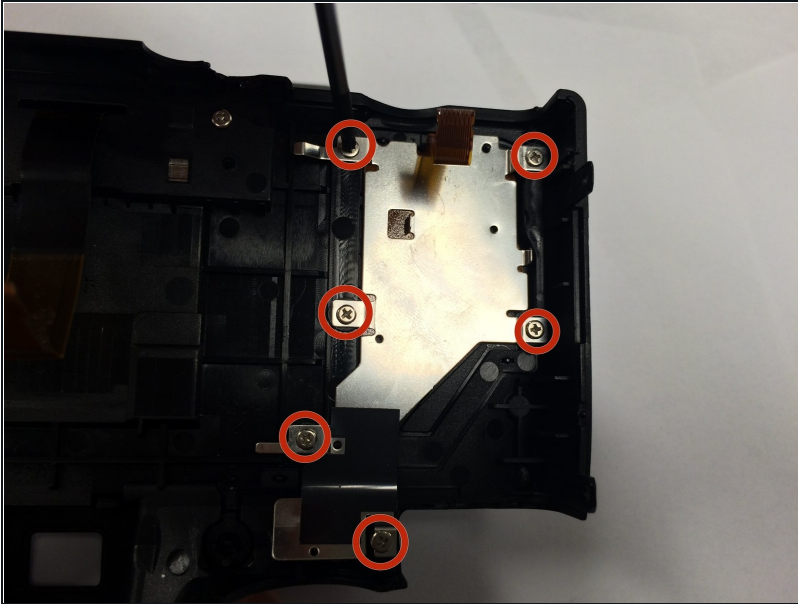
⚠ There are two ribbon cables when opening the camera. Make sure to properly detach them before proceeding.

## Step 9



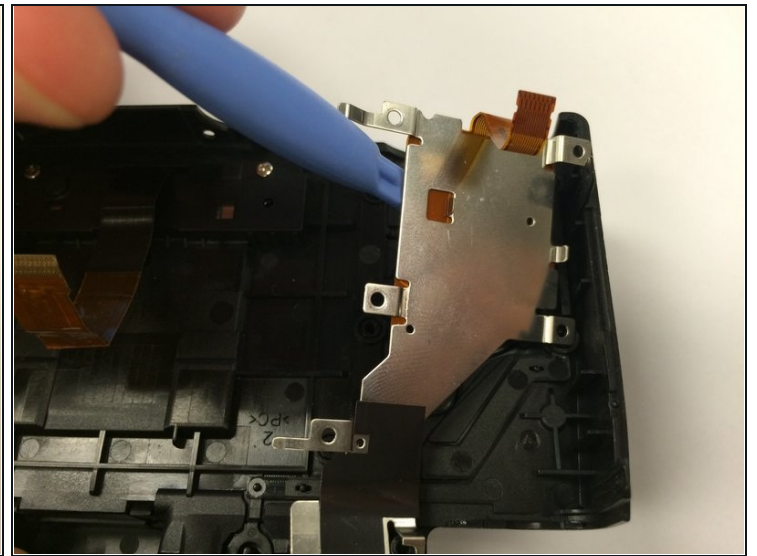
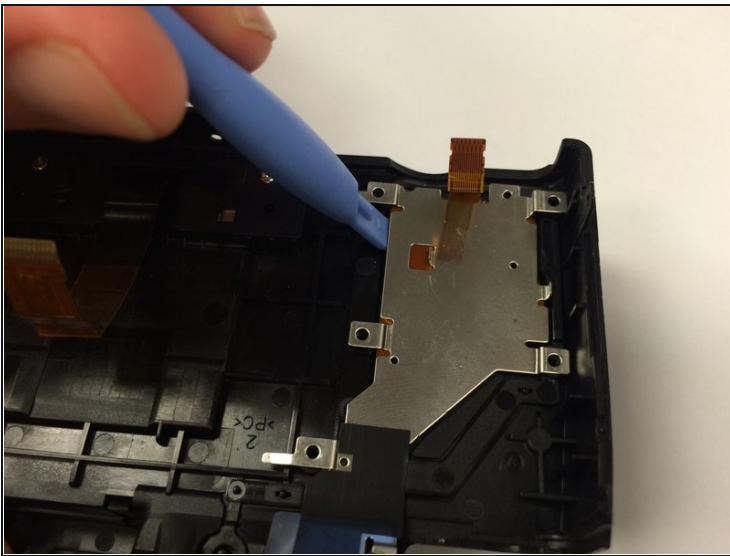
- This is the cover that houses the back buttons of the camera. Turn it around.

## Step 10



- Remove the six indicated screws.

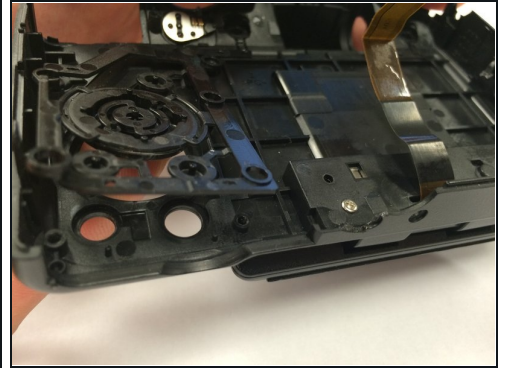
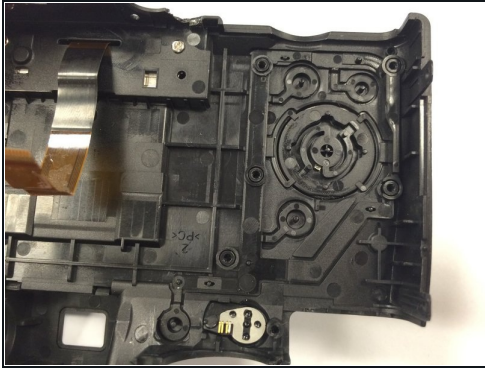
## Step 11



- Use a plastic opening tool to lift the metal plate and set it aside.



## Step 12



- Turn the cover around and push against the buttons.

## Step 13



- Now you have partial access to one set of buttons.



## Step 14



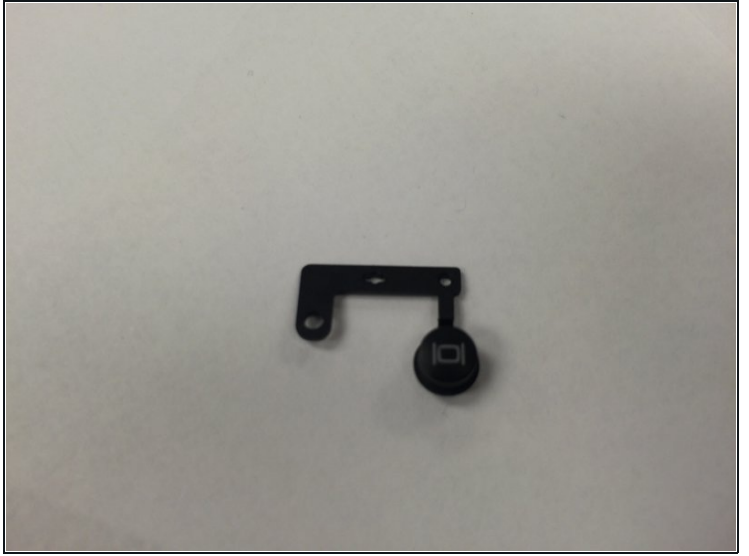
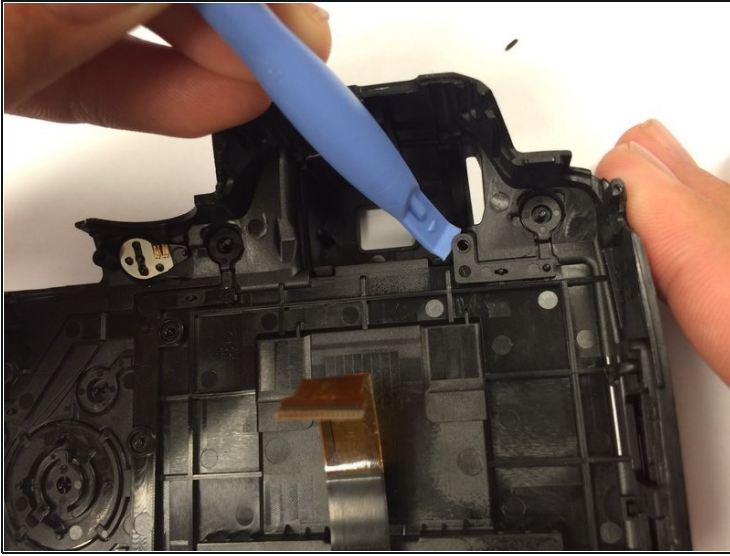
- Find the last set of removal buttons on the bottom left.

## Step 15



- Remove the screw.

## Step 16



- Use a plastic opening tool to remove the button.

---

To reassemble your device, follow these instructions in reverse order.