



# iVIEW-754TPC Camera Assembly Replacement

Replace the camera module on your iVIEW-754TPC.

Written By: Robert Clark



---

# INTRODUCTION

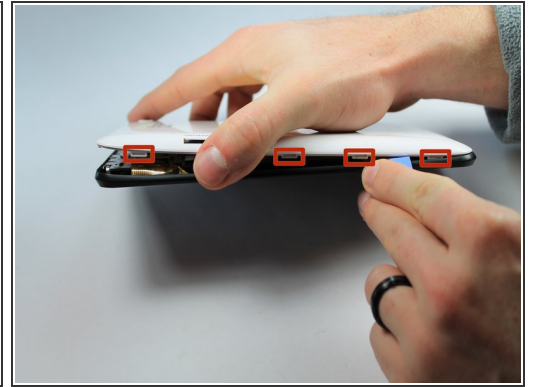
Is your camera not functioning correctly? Use this guide to replace the camera module in your device.



## TOOLS:

- [Spudger](#) (1)
  - [iFixit Opening Tools](#) (1)
  - [Tweezers](#) (1)
-

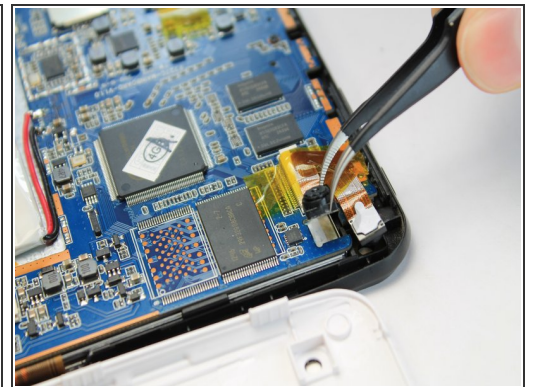
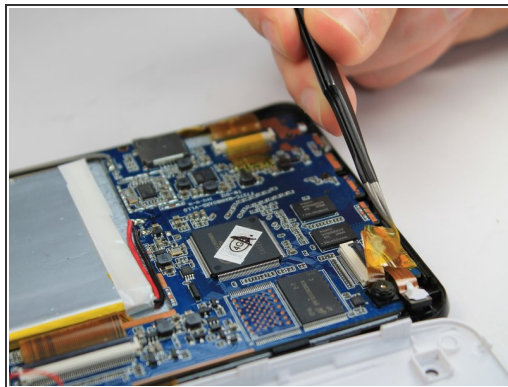
## Step 1 — Rear Panel



**i** Before disassembling your tablet, make sure it is powered off.

- Use plastic opening tool to release the clips holding the device together. The clips will take a small amount of pressure to release. Once you have the plastic opening tool inserted, use a twisting action to release the clips. Start from bottom of device and work all the way around.

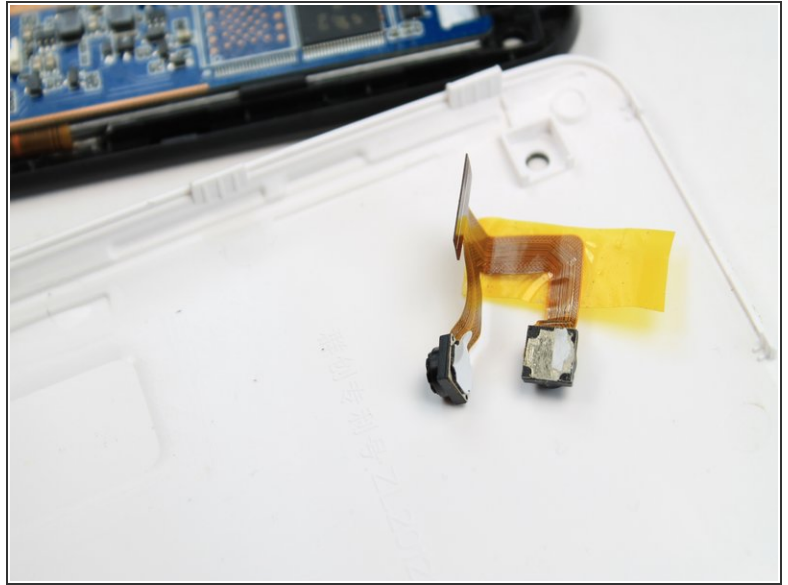
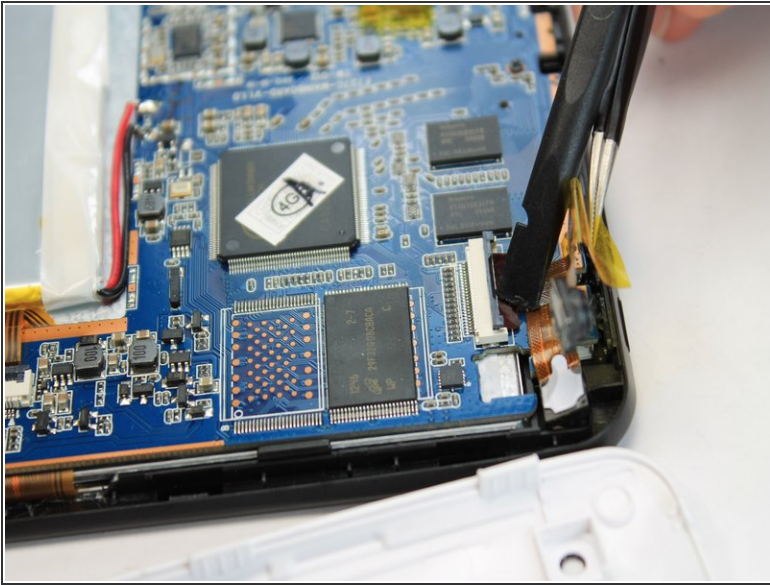
## Step 2 — Camera Assembly



- The camera module is located directly under the top right corner of the back cover.
- Peel back the tape holding down the camera ribbon connector using a pair of tweezers.
- i** As you peel the tape backward, the front facing camera may come out, this is not an issue.
- If the front facing camera does not come out, gently lift it out with a pair of tweezers



## Step 3 — Remove Camera



- Use a spudger to lift flap on top of the camera ZIF adapter.
- At this point the camera module can be easily removed with a pair of tweezers.
- ⓘ During reassembly, make sure you put the ZIF adapter snugly back into its socket and secure the flap.

To reassemble your device, follow these instructions in reverse order.