



# Nikon Coolpix P90 Eyepiece Replacement

The purpose of this guide is to replace the...

Written By: Elizabeth Kamine



# INTRODUCTION

The purpose of this guide is to replace the eyepiece (plastic rectangular piece around the viewfinder) of a Nikon Coolpix P90 if it is loose, broken, or lost.

In steps 1-2, 5, and 8, a Phillips #000 Precision Screwdriver is used to unscrew and remove all of the screws mentioned.

In steps 3-4, 6-7, and 9, there are three data connection ribbons which need to be carefully removed before the repair can continue. Failure to remove these ribbons properly will result in them becoming damaged or ripped, thereby permanently damaging your camera. So, please be careful and go slowly during this repair.

---

## TOOLS:

[iFixit Opening Tool](#) (1)

[Phillips #000 Screwdriver](#) (1)

---

## Step 1 — Camera Base



- Use your finger to push the latch of the compartment door to the center of the camera body, per image 1.
- Push the door open, and remove the existing battery with your fingers, per images 2-3.

## Step 2 — Eyepiece



① Use a Phillips #000 Precision Screwdriver for all of the following steps.

- On the bottom side of the camera, unscrew both 4.5 mm screws holding the bottom into place, per image 1.
- On the right side of the camera, unscrew both 4.5 mm screws holding the side into place, per image 2.
- On the right side of the camera, unscrew the 4.5 mm screw underneath the A/V flap, per image 2.
- On the top side of the camera, unscrew the 4.0 mm screw on the left-side wrist strap loop, per image 3.

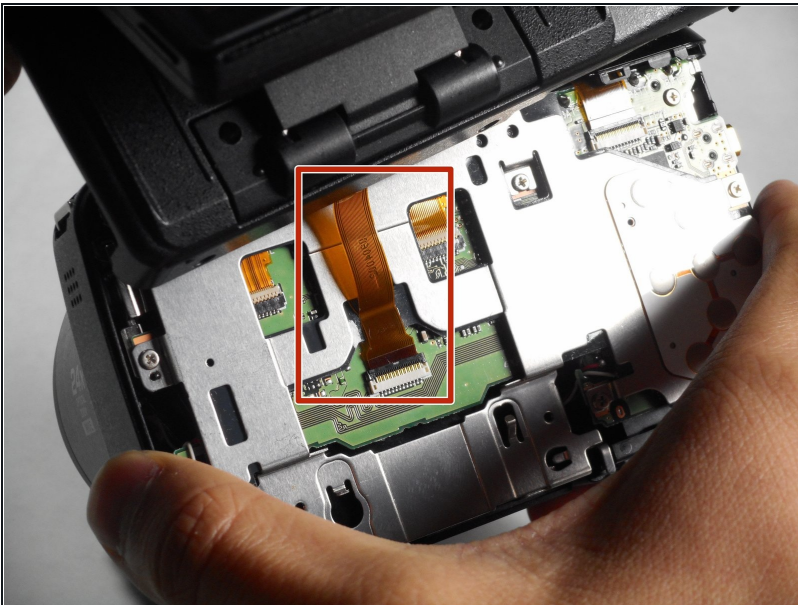
### Step 3



① Use a Phillips #000 Precision Screwdriver for the following step.

- Lift up the LCD screen to reveal the two screws.
- Unscrew the two 3.0 mm screws that hold the arm in place, per image 2.

### Step 4

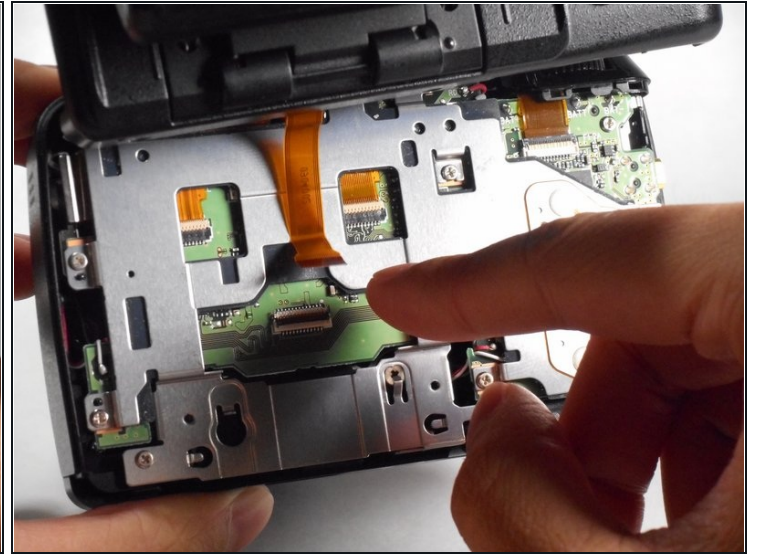
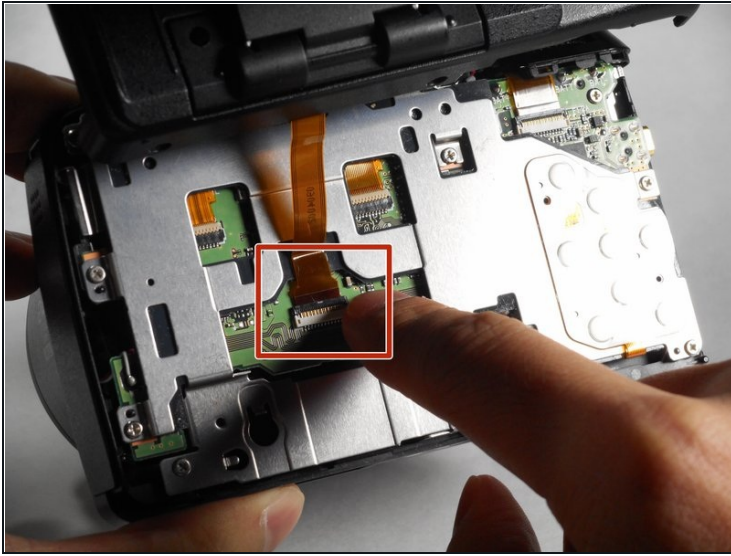


- Carefully lift up the back cover from the rear side of the camera.

⚠ Possible Device Damage: Do NOT completely remove the back cover from the camera yet. There is a data transfer ribbon connecting the LCD screen to the motherboard, per image 1.



## Step 5



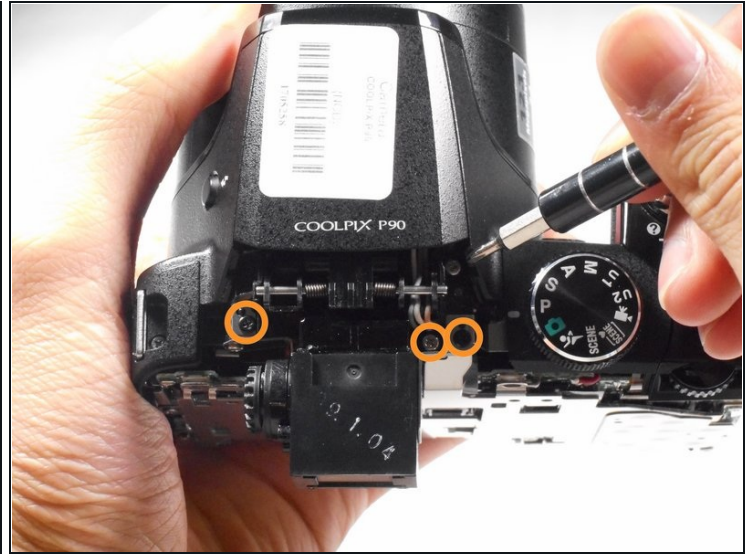
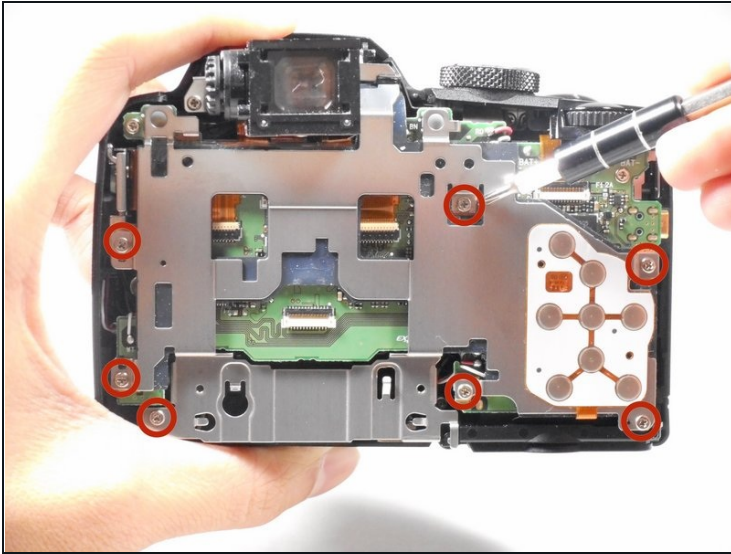
- Press your finger on the top of the ribbon latch and pull it down and toward you to open the safety latch and free the ribbon, per image 1.

**⚠ Possible Device Damage:** Be careful when releasing the safety latch because it is fragile and may break easily.

- Slide the ribbon out from its socket.

**i** It is now safe to completely remove the back cover from the camera.

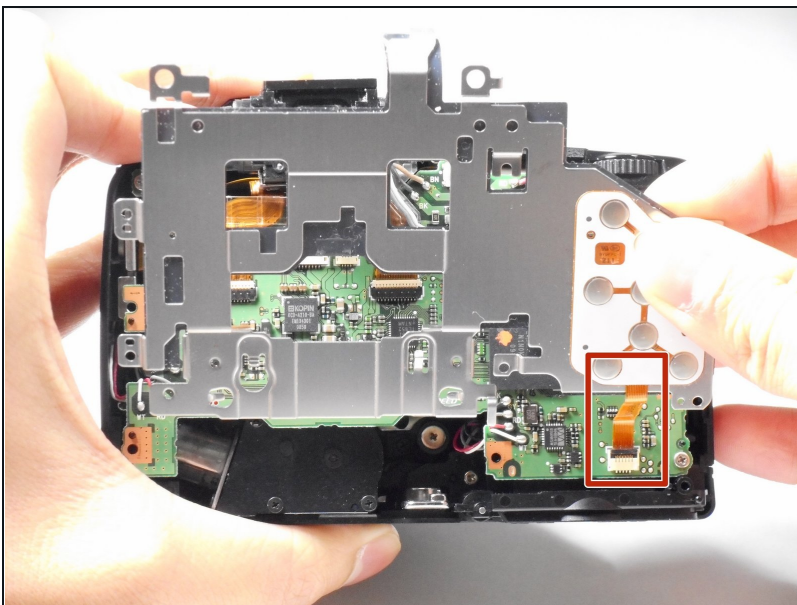
## Step 6



① Use a Phillips #000 Precision Screwdriver for all of the following steps.

- On the back side of the camera, unscrew the seven 4.0 mm screws that connect the metal plate to the motherboard, per image 1.
- On the top side of the camera, unscrew the three 4.0 mm screws that connect the metal hinges to the camera body, per image 2.

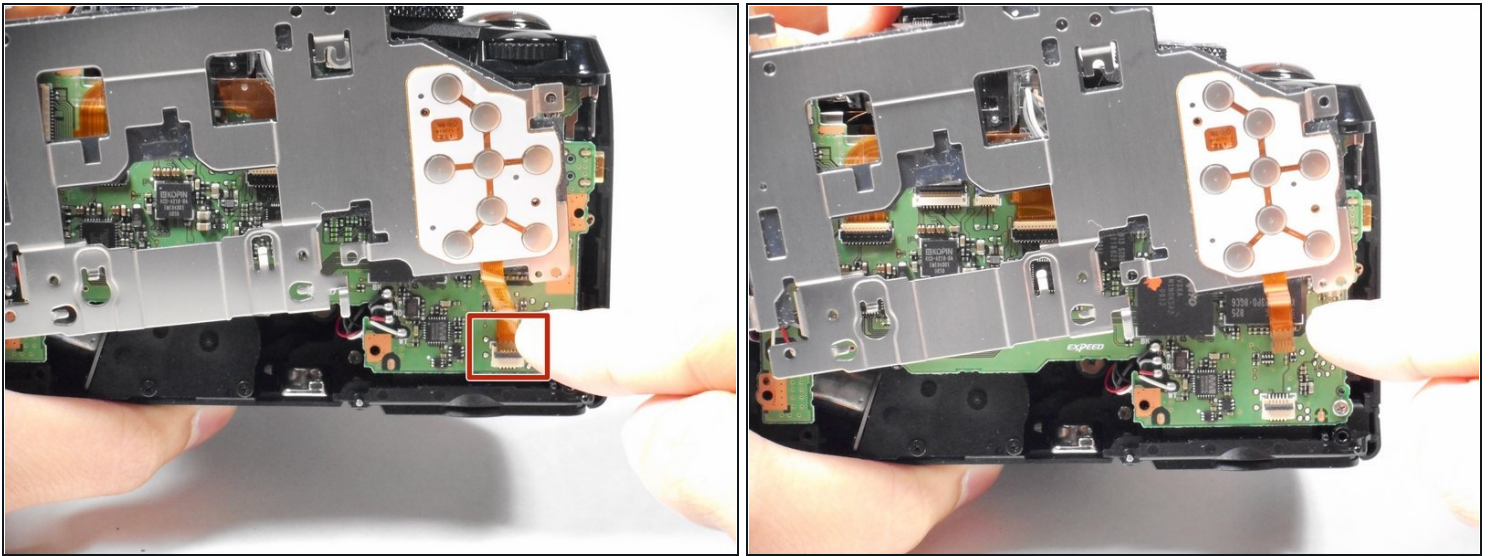
## Step 7



- Carefully lift the metal backing from the motherboard.

⚠ Possible Device Damage: Do NOT completely remove the metal backing yet. There is a data transfer ribbon connecting the metal backing to the motherboard, per image 1.

## Step 8



- Press your finger on the top of the latch and pull it down and towards you to open the safety latch and free the ribbon, per image 1.

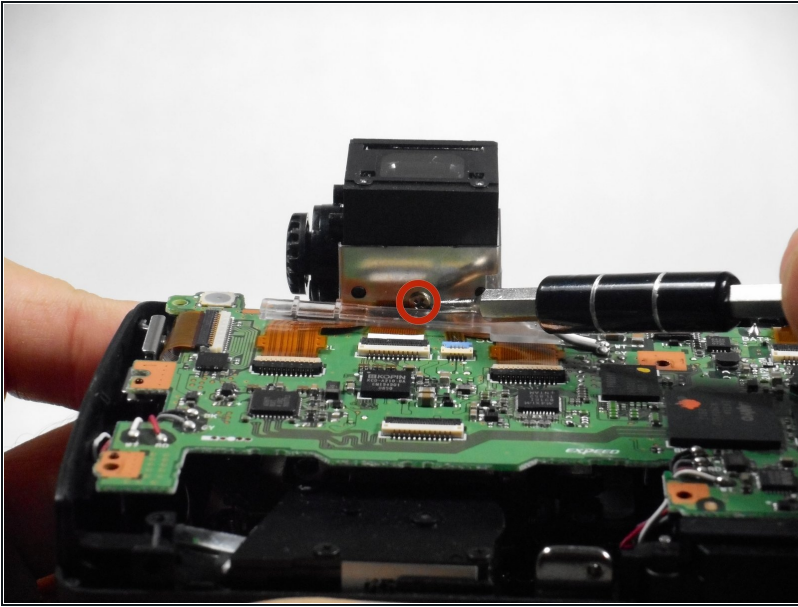
**⚠ Possible Device Damage:** Be careful when releasing the safety latch because it is fragile and may break easily.

- Slide the ribbon out from its socket.

**i** It is now safe to completely remove the metal backing from the camera.

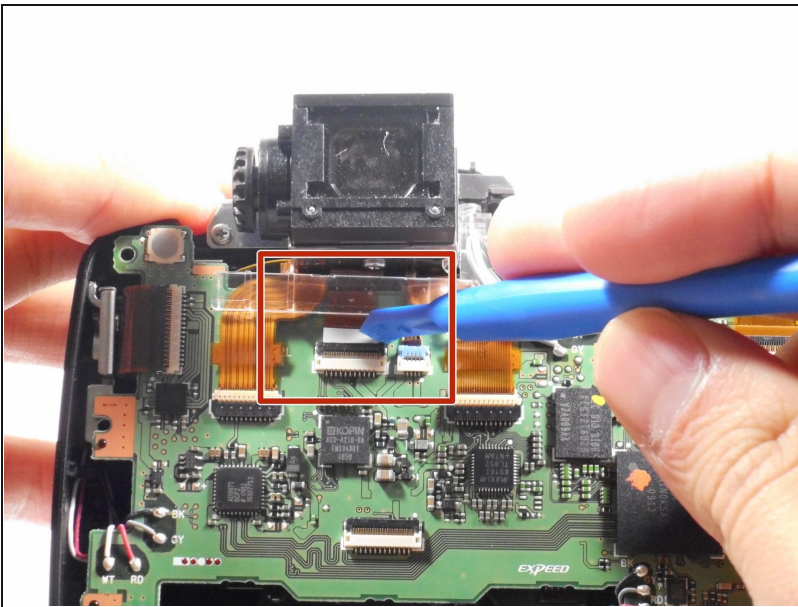


## Step 9



- ① Use a Phillips #000 Precision Screwdriver for the following step.
- Unscrew the 3.0 mm screw that holds the eyepiece in place, per image 1.

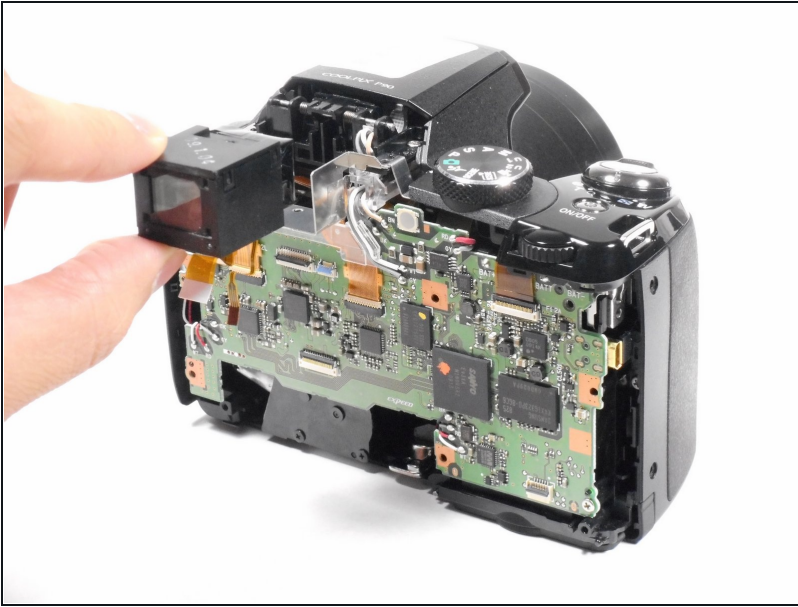
## Step 10



- ⚠ Possible Device Damage: Do NOT completely remove the eyepiece yet. There is a data transfer ribbon connecting the eyepiece to the motherboard, per image 1.
- Using a plastic opening tool, carefully unlatch the safety latch that holds the eyepiece data transfer ribbon in place.
- Slide the ribbon out from its socket.



## Step 11



- Remove the eyepiece from the camera by gently pulling it back.
- Replace the old eyepiece with a new eyepiece.
- Congratulations, the repair is finished!

---

To reassemble your device, follow these instructions in reverse order.