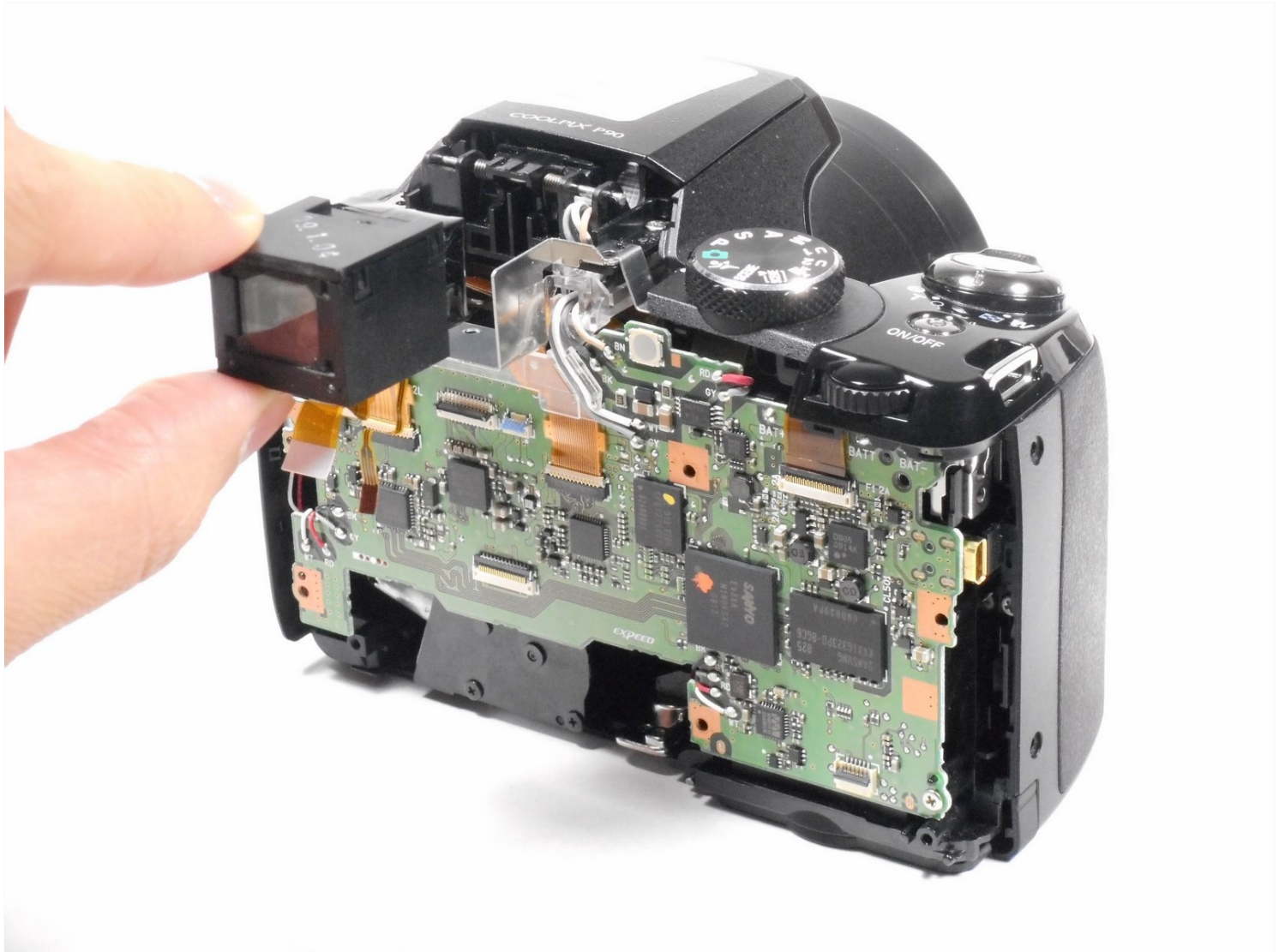




Nikon Coolpix P90 Eyepiece Replacement

Replace the eyepiece (plastic rectangular piece...

Written By: Elizabeth Kamine



INTRODUCTION

Replace the eyepiece (plastic rectangular piece around the viewfinder) if it is loose, broken, or lost.

TOOLS:

[iFixit Opening Tool](#) (1)

[Phillips #000 Screwdriver](#) (1)

Step 1 — Camera Base



- Use your finger to push the notch of the compartment door to the center of the camera body.
- Release the compartment door, and it will swing open.
- Remove the existing battery with your fingers.

Step 2 — Eyepiece



① Use a Phillips #000 Precision Screwdriver for all of the following steps.

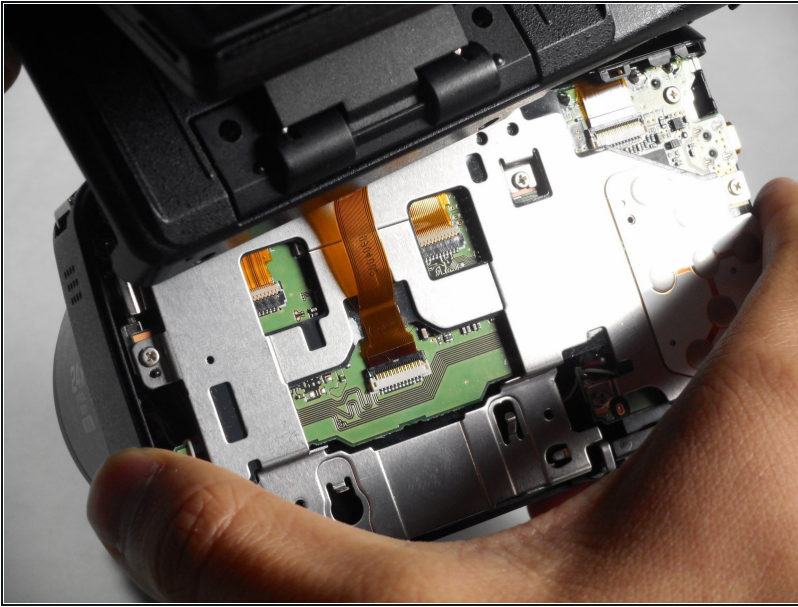
- Remove both 4.5 mm screws holding the bottom into place.
- Remove both 4.5 mm screws holding the side into place.
- Remove the 4.5 mm screw underneath the A/V flap.
- Remove the 4.0 mm screw on the left-side wrist strap loop.

Step 3



- Lift up the LCD screen to reveal the two screws.
- Using a Phillips #000 Precision Screwdriver, remove the two 3.0 mm screws that hold the arm in place.

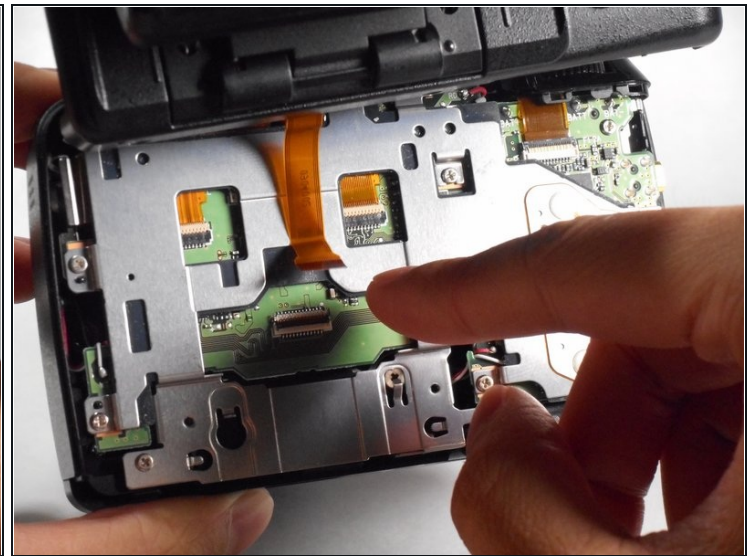
Step 4



- Carefully lift the back cover from the camera.

⚠ Do NOT completely remove the back cover from the camera yet. There is a data transfer ribbon connecting the LCD screen to the motherboard.

Step 5



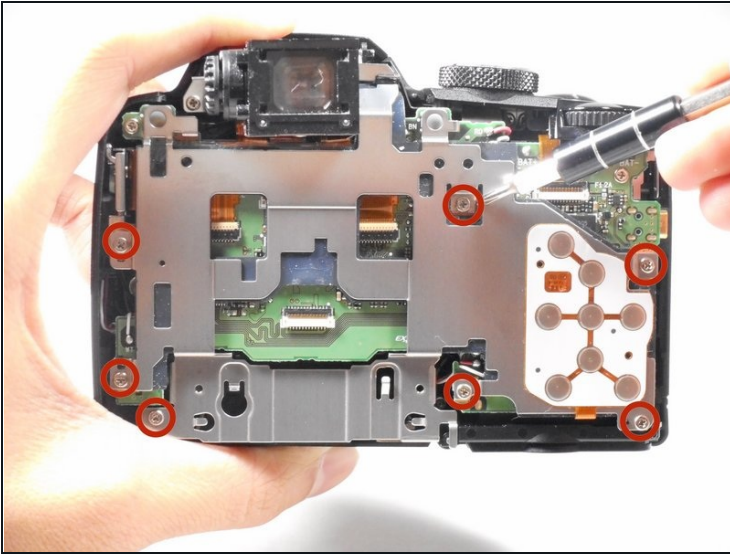
- Press your finger on the top of the latch and pull it down and toward you to open the safety latch and free the ribbon.

⚠ Be careful when releasing the safety latch because it is fragile and may break easily.

- Slide the ribbon out from its socket.

ⓘ It is now safe to completely remove the back cover from the camera.

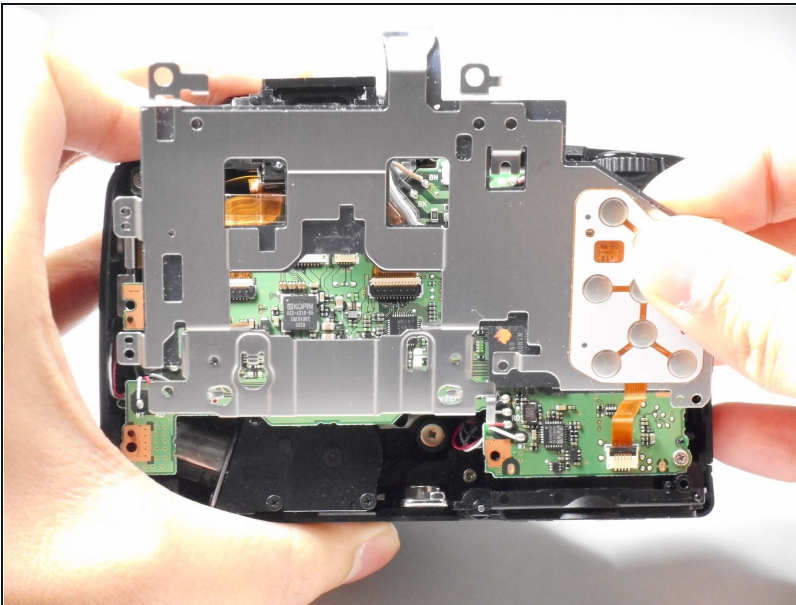
Step 6



① Use a Phillips #000 Precision Screwdriver for all of the following steps.

- Remove the seven 4.0 mm screws that connect the metal plate to the motherboard
- Remove the three 4.0 mm screws that connect the metal hinges to the camera body.

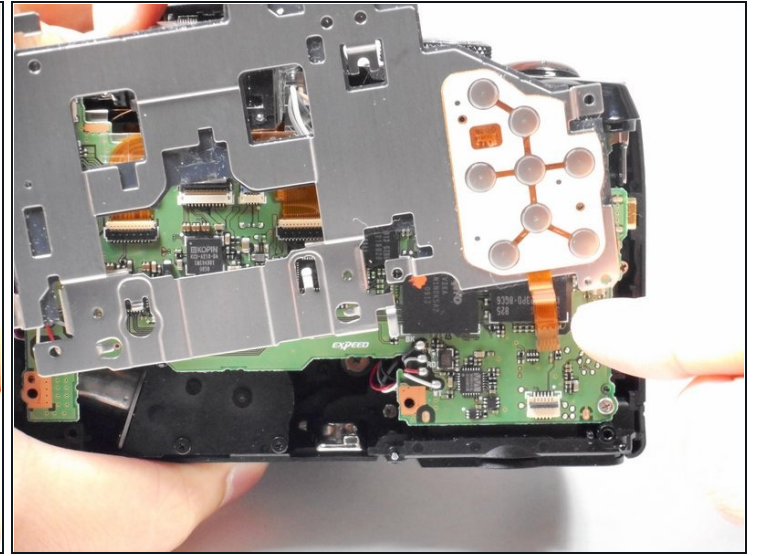
Step 7



- Carefully lift the metal backing from the motherboard.

⚠ Do NOT completely remove the metal backing yet. There is a data transfer ribbon connecting the metal backing to the motherboard.

Step 8

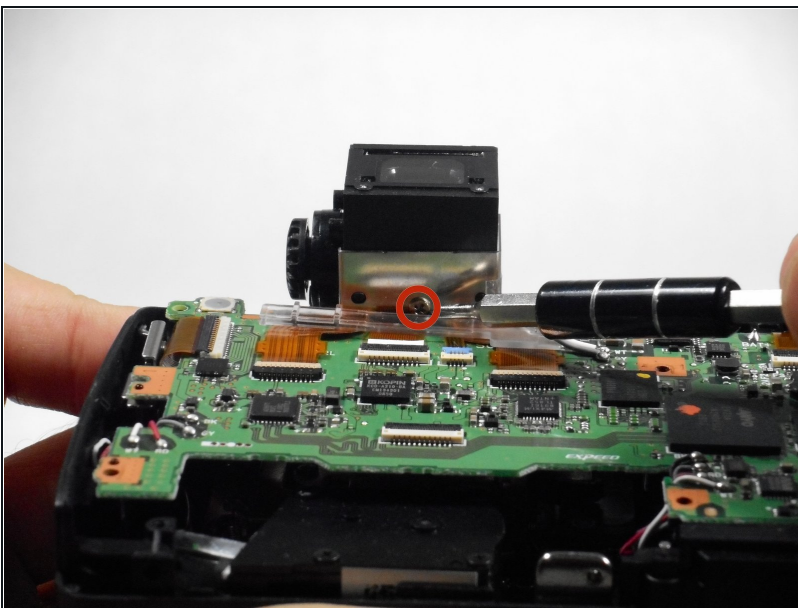


- Press your finger on the top of the latch and pull it down and towards you to open the safety latch and free the ribbon.

⚠ Be careful when releasing the safety latch because it is fragile and may break easily.

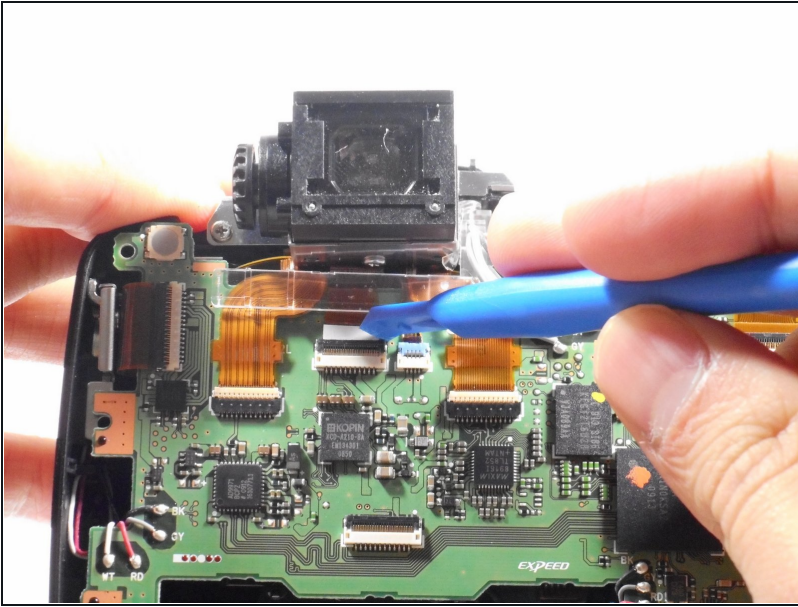
- Slide the ribbon out from its socket.
- ⓘ It is now safe to completely remove the metal backing from the camera.

Step 9



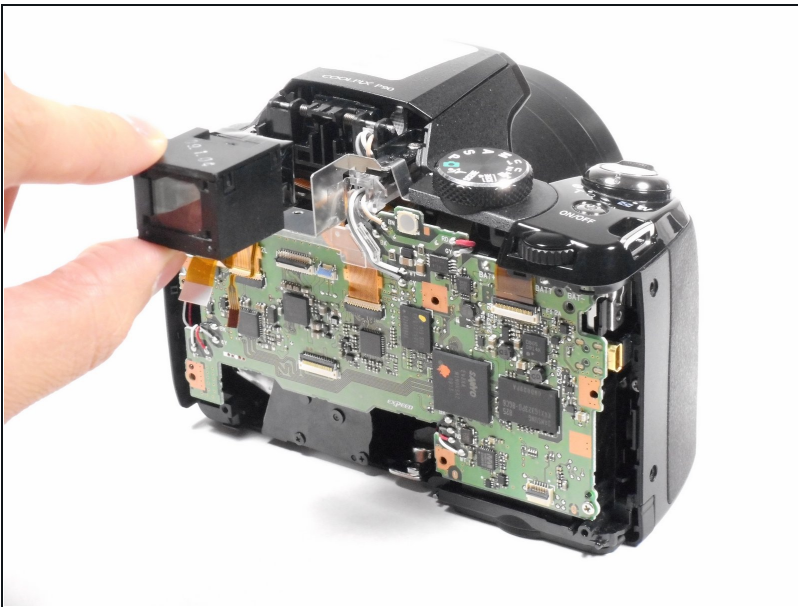
- Using a Phillips #000 Precision Screwdriver, remove the 3.0 mm screw that holds the eyepiece in place.

Step 10



- Using a plastic opening tool, carefully unlatch the safety latch that holds the eyepiece data transfer ribbon in place.
- Slide the ribbon out from its socket.

Step 11



- Remove the eyepiece from the camera.

To reassemble your device, follow these instructions in reverse order.