



Samsung NX300 and NX300M Back Panel Assembly Replacement

This guide will show you how to remove the back...

Written By: Andres Perez



INTRODUCTION

This guide will show you how to remove the back panel assembly, which houses the main control buttons and the LED display, allowing to replace its individual parts or access the internal parts of part of the camera.

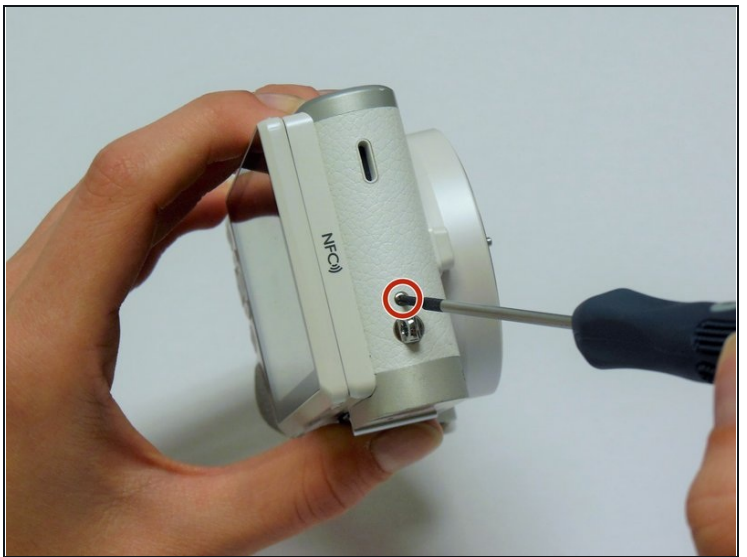
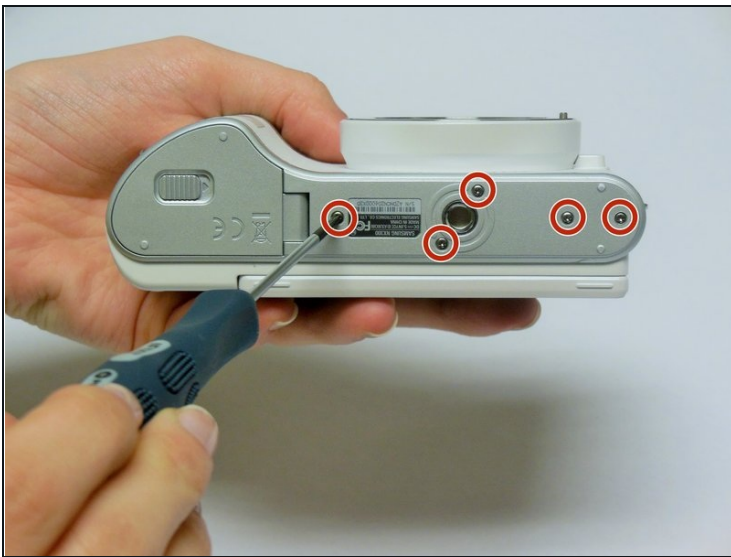
TOOLS:

[Phillips #00 Screwdriver](#) (1)

[iFixit Opening Tool](#) (1)

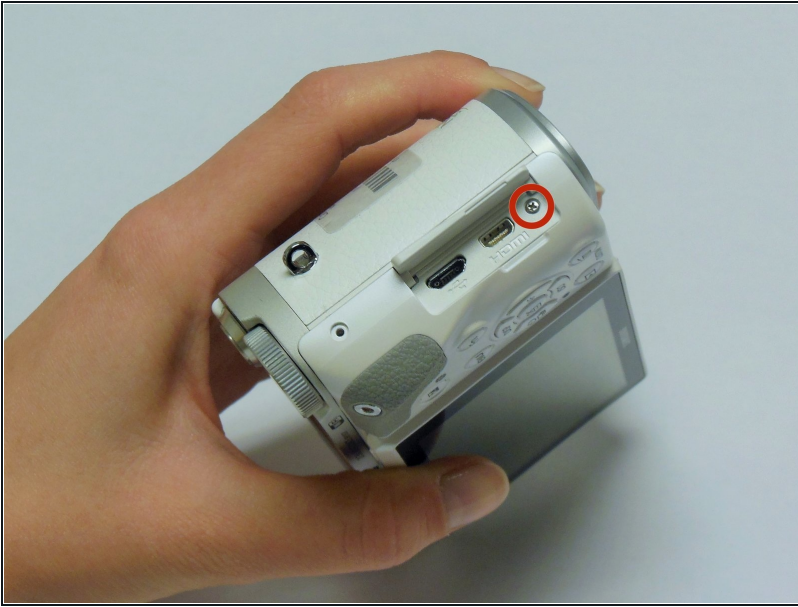
[Tweezers](#) (1)

Step 1 — Unscrew the Back Panel



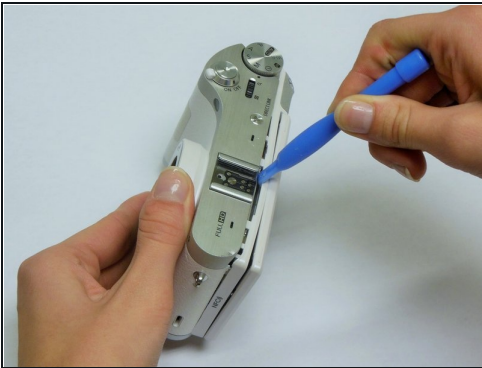
- Using a Phillips #00 precision screwdriver, remove the seven 4mm screws (5 on the bottom of the device and 1 on each of the two sides) holding the back panel to the camera.
- ⓘ On the NX300M model, there is an additional screw under the text AMOLED behind display which should be removed before detaching the back panel of the camera.

Step 2 — Remove the Input Port Screw



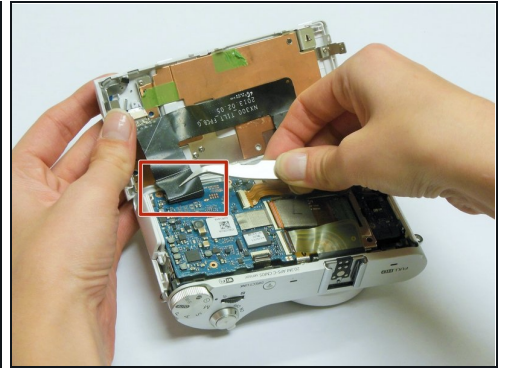
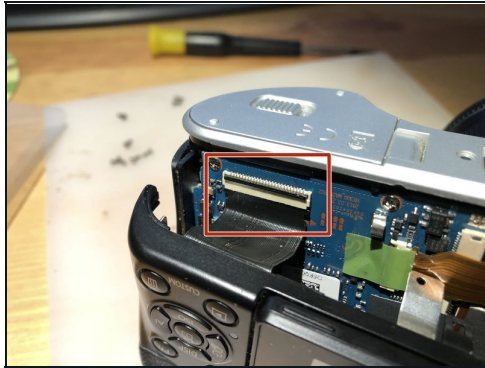
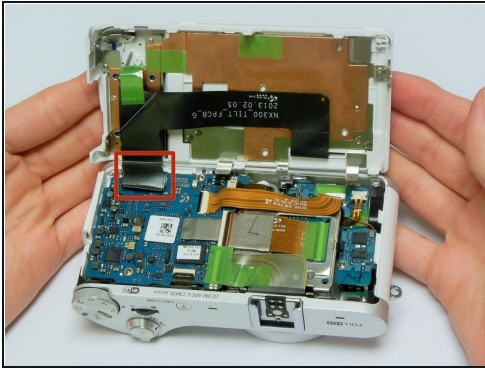
- Using a Phillips #00 precision screwdriver, remove the last 4 mm screw located inside the input ports' compartment.

Step 3 — Open the Camera Casing



- Place a plastic opening tool into the gap between the back panel and camera body, from both the top and the bottom of camera. Carefully pry open the camera and separate the back panel.

Step 4 — Remove the Back Panel



- Using [tweezers](#) or your fingers, pull the display's black ribbon from the motherboard. This frees the back panel altogether.
- ① To safely remove ribbons, you would need to first unlock the holding mechanism by lifting up the black strip atop the ribbon adapter.

To reassemble your device, follow these instructions in reverse order.