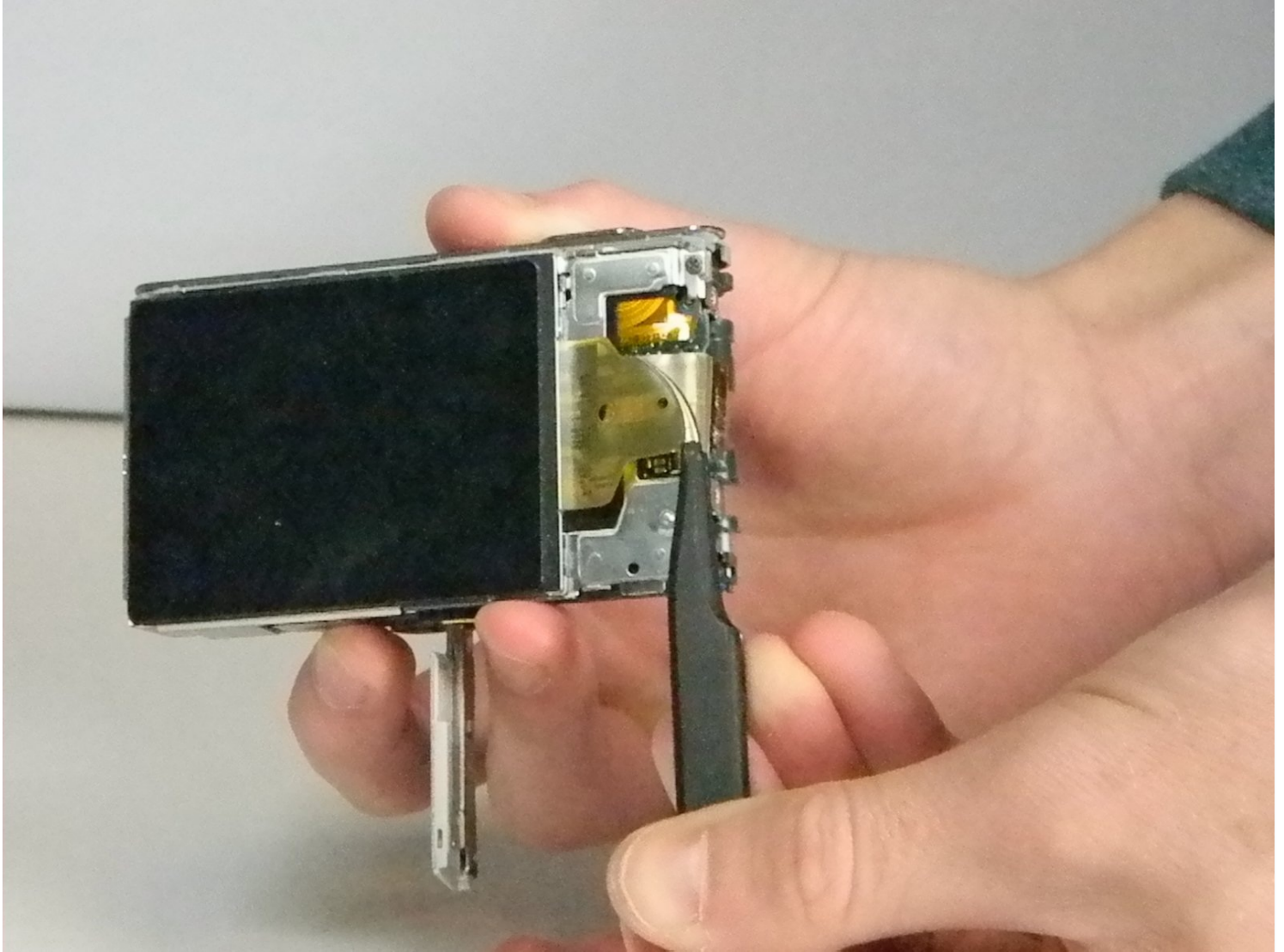




# Sony Cyber-shot DSC-W730 LCD Screen Replacement

This will help solve a lot of black screen...

Written By: Jeremy Petchonka



# INTRODUCTION

This will help solve a lot of black screen problems, as you should be able to see if the ribbon is connected or the LCD screen is damaged. Be careful with the ribbons.

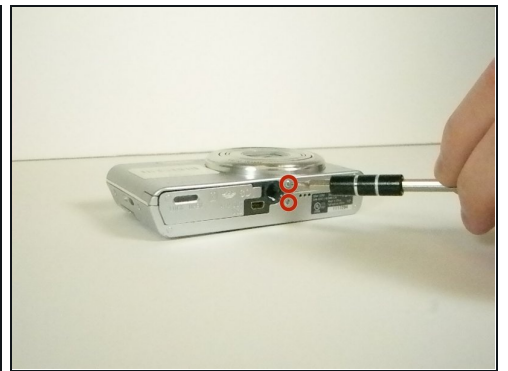
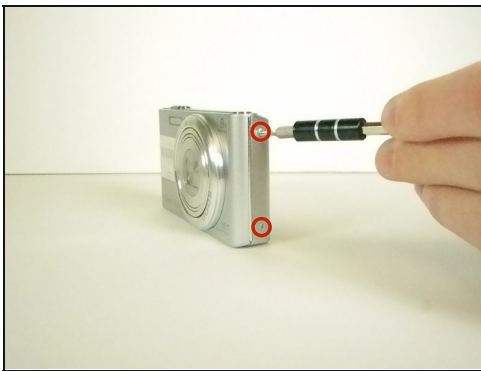
## TOOLS:

[Phillips #000 Screwdriver](#) (1)

[iFixit Opening Tool](#) (1)

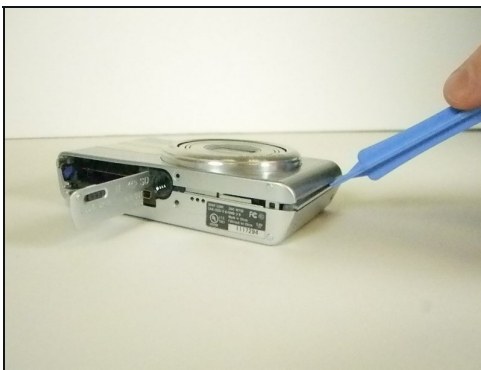
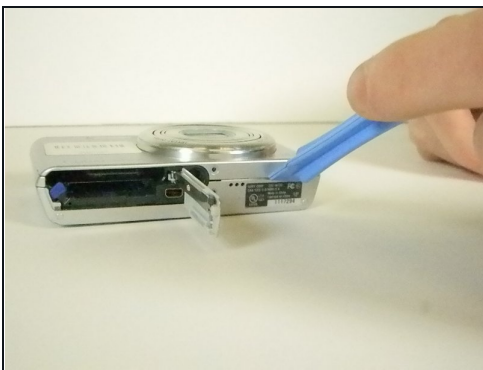
[Spudger](#) (1)

## Step 1 — Removing the Case



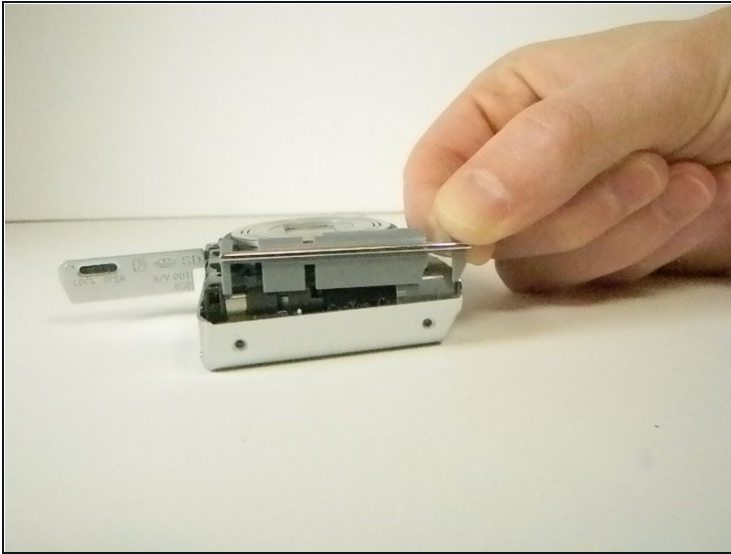
- Open the battery/memory card door and remove the 6 screws (.35cm) with a Philips 000 screwdriver. There will be two screws on the left and right sides, and two on the bottom.

## Step 2



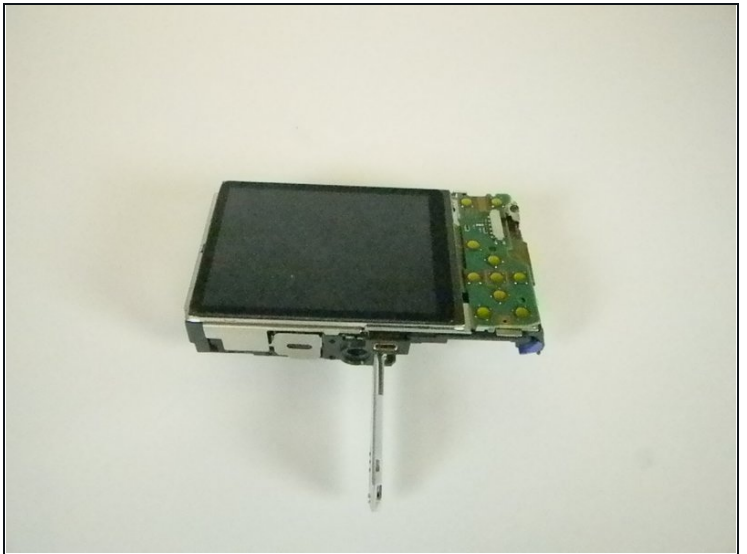
- Take off the front part of the case with a plastic opening tool.

### Step 3



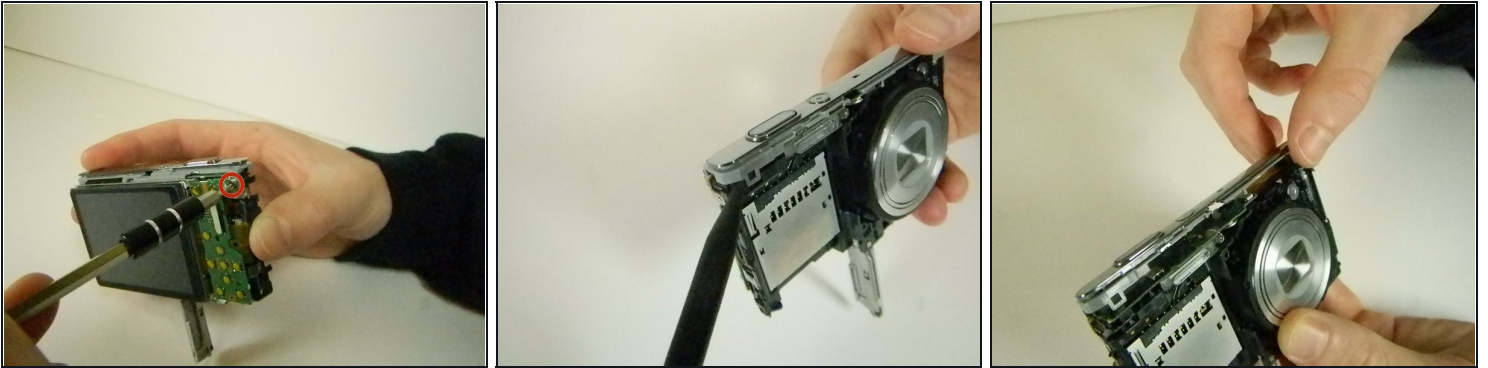
- Pull off the two silver side pieces on the left and right sides.

### Step 4



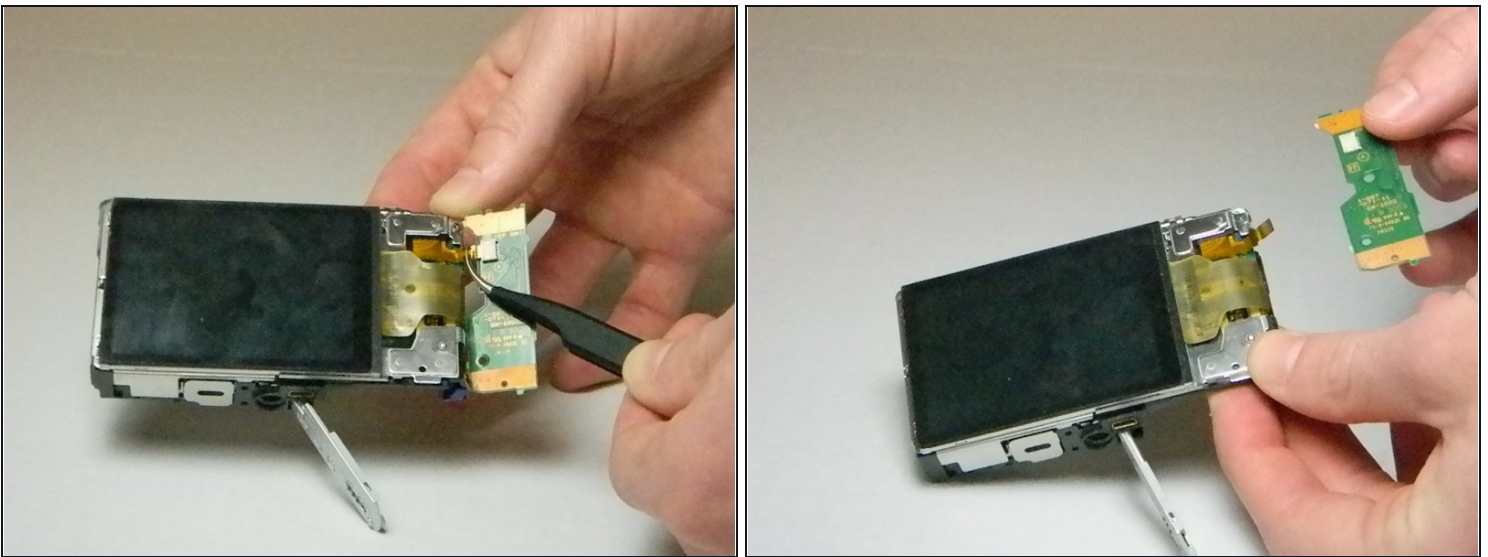
- Remove the main back piece. It should easily lift off.

## Step 5



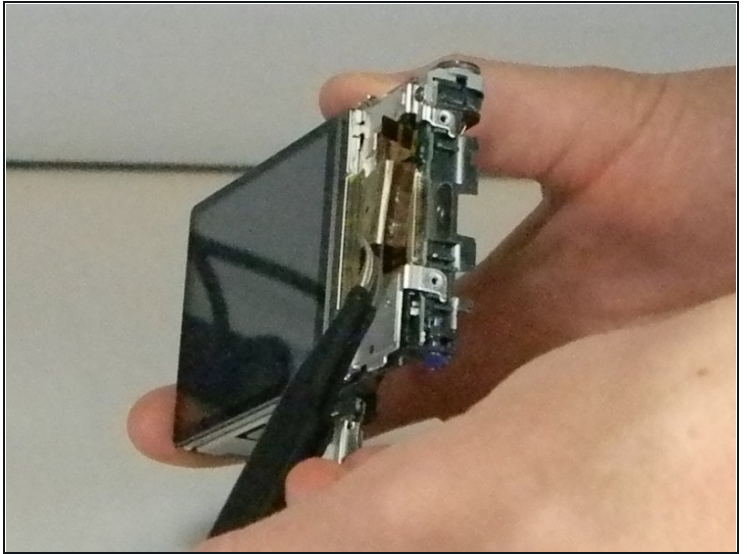
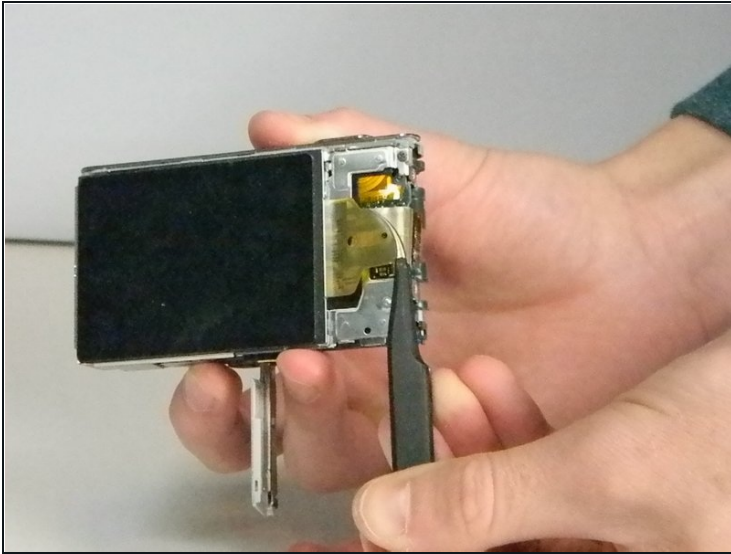
- Unscrew the .45cm screw located on the upper right corner on the back of the camera. Once the screw is off, use the spudger and unclip the piece holding the top down on the upper left on the front of the camera. It should lift off with ease.

## Step 6 — LCD Control Board



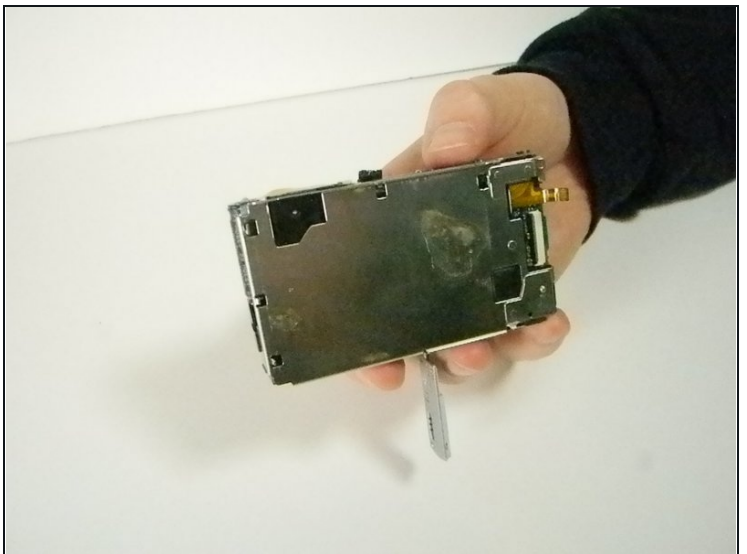
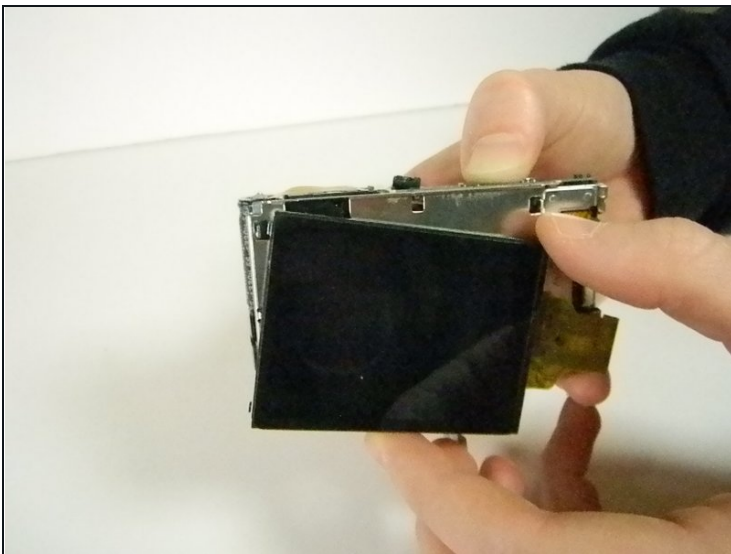
- Flip over the control board then use [tweezers](#) to pull out the ribbon connecting the circuit board to the motherboard.

## Step 7 — LCD Screen



- Use [tweezers](#) to remove the ribbon that is connected from the LCD screen to the camera by pulling the part that is folded under, out.

## Step 8



- Slide the right side of the LCD screen clockwise, which will push it off the camera. The rest of the screen should come off with it with ease.

---

To reassemble your device, follow these instructions in reverse order.