



# Sony Cyber-shot DSC-W55 Front Case Replacement

We are going to explain the steps needed and...

Written By: Andrew Carter



# INTRODUCTION

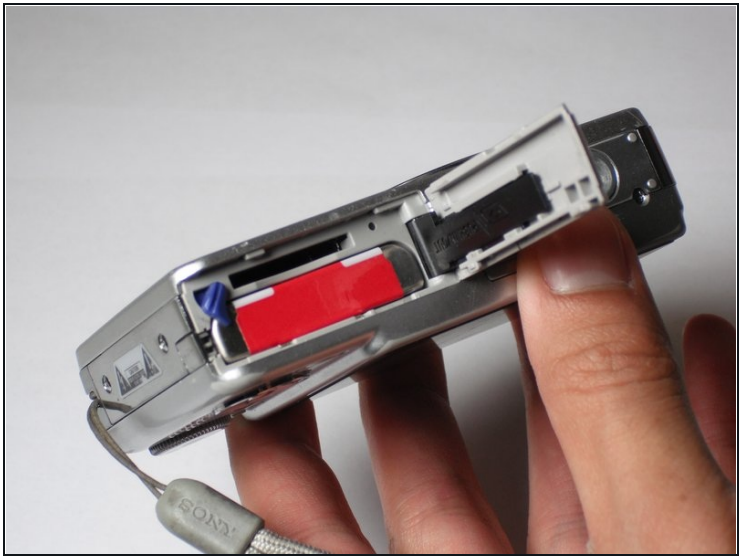
We are going to explain the steps needed and what is necessary in order to replace a broken front cover for this camera.

## TOOLS:

[Phillips #00 Screwdriver](#) (1)

[iFixit Opening Tool](#) (1)

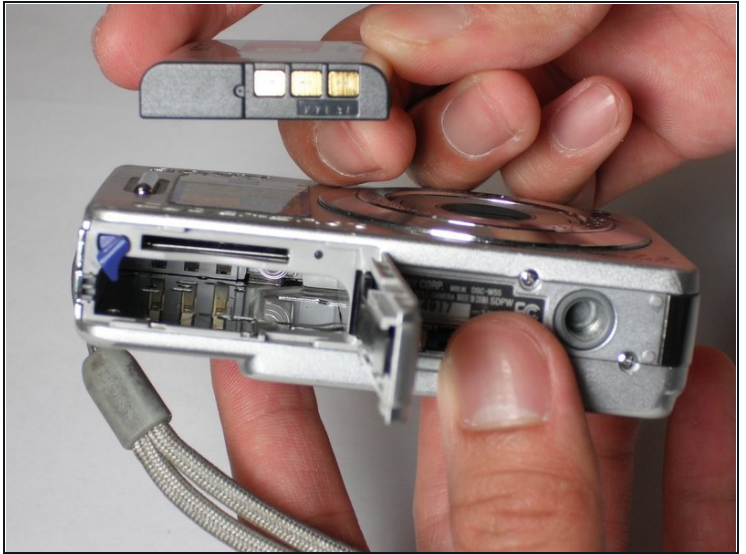
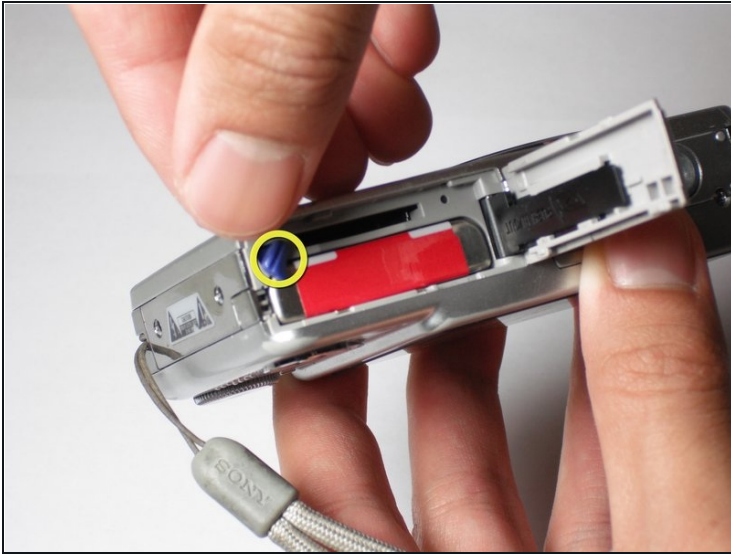
## Step 1 — Battery



- Slide the battery cover in the direction the arrow points.
- Pull the battery cover towards you.

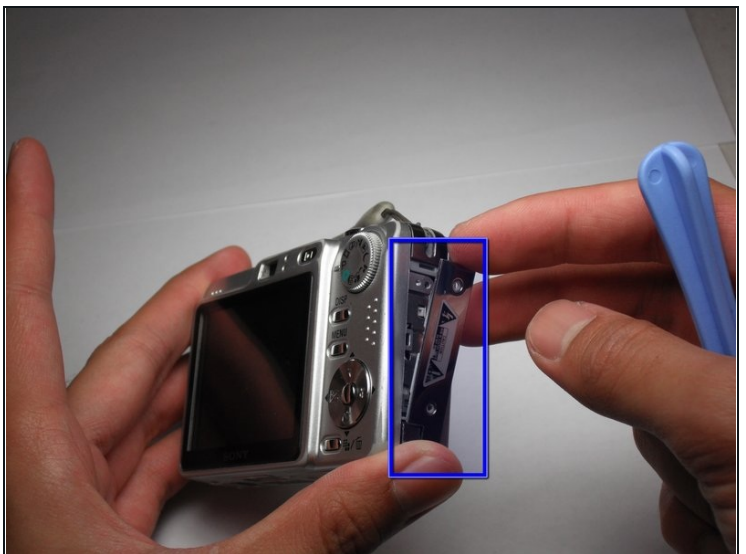
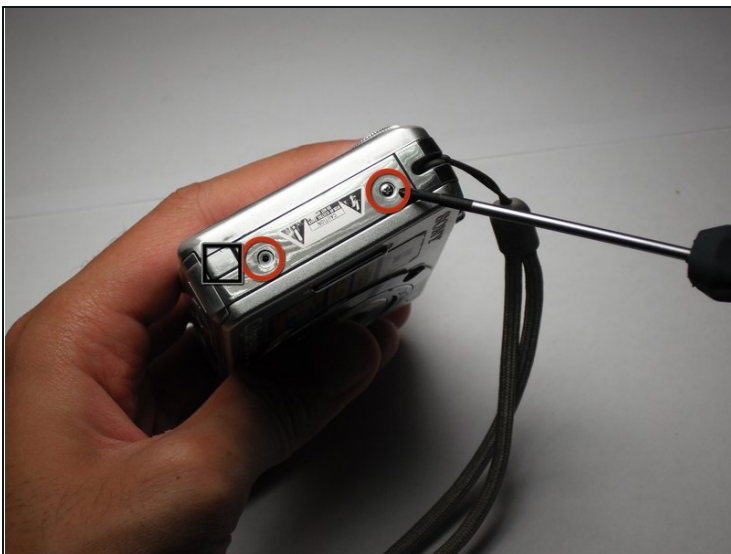


## Step 2



- Flick the blue switch for the battery to pop out.
- Remove the battery from the camera.

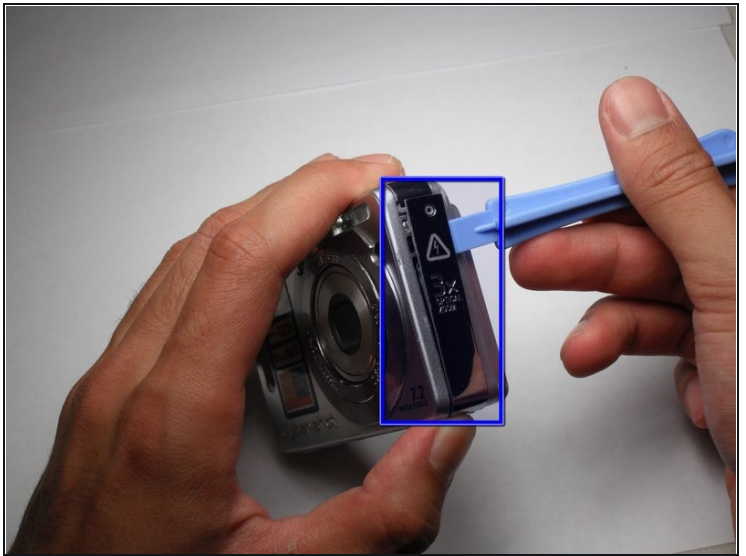
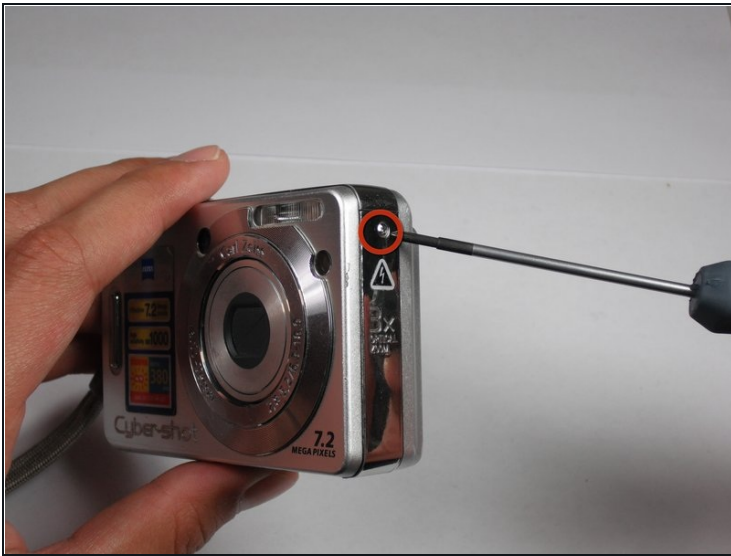
## Step 3 — Back Case



- Using the Phillips #00 Screwdriver, remove the two screws from the caution panel.
- Remove that panel.

⚠ Careful for falling pieces.

## Step 4



- Remove the screw with a Phillips #00 screwdriver from the left side of the camera (with '3x optical zoom' engraved on the side panel).
- Remove that panel.

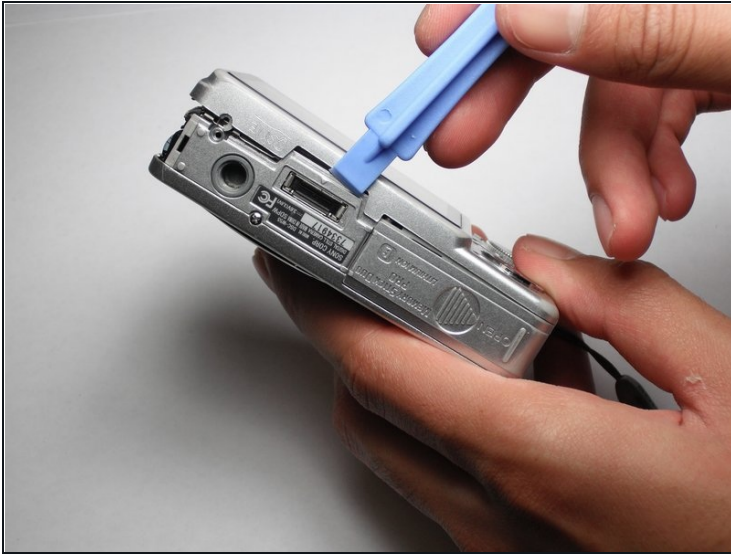
## Step 5



- Remove the screw using the Phillips #00 screwdriver from the bottom of the camera, closest to the back cover.



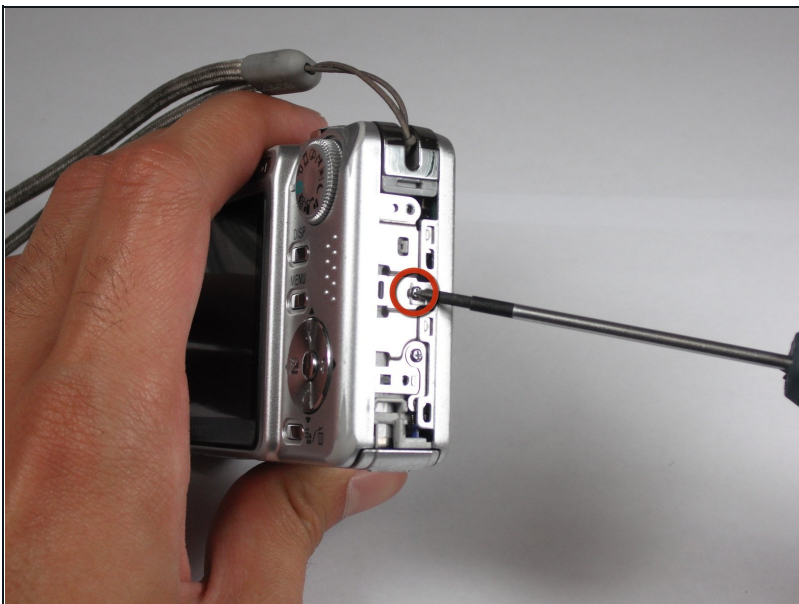
## Step 6



- Gently remove the back cover.

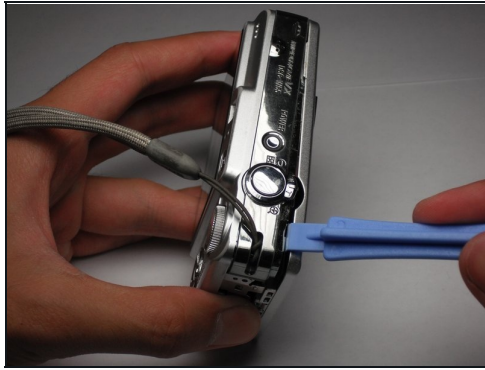
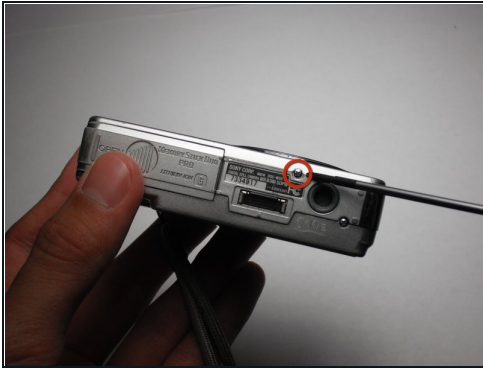
⚠ It may be a bit stiff, so use some force to remove it. Proceed with caution.

## Step 7 — Front Case



- Remove the screw using a Phillips #00 screwdriver on the right side (where the caution panel used to be).

## Step 8



- Remove the small screw using a Phillips #00 screwdriver on the bottom of the camera attached to the front cover.
- Gently remove the front cover.

⚠ Put a little force to pop off the case. Proceed with caution.

---

To reassemble your device, follow these instructions in reverse order.