



Disassembling Circo Monkey Alarm Clock Chassis

This guide will show you how to disassemble the chassis of the clock.

Written By: John Donald



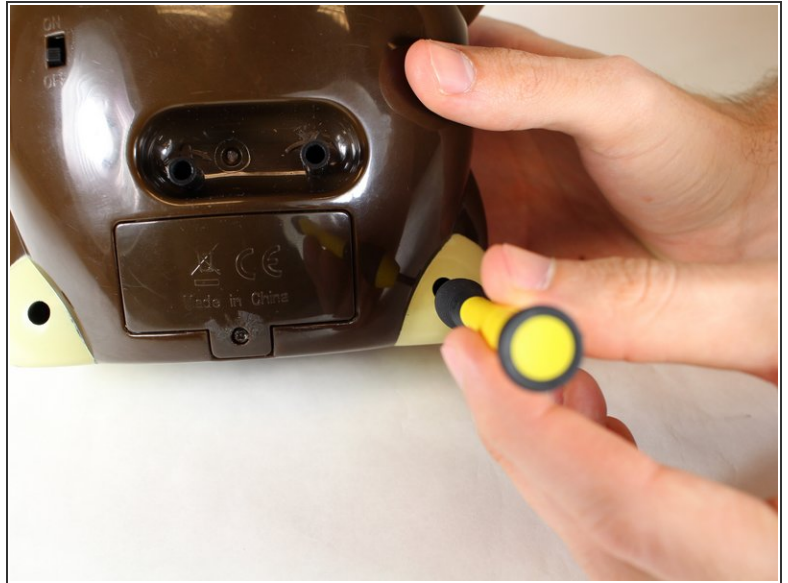
INTRODUCTION

Removal of screws and how to separate the two halves of the clock.

TOOLS:

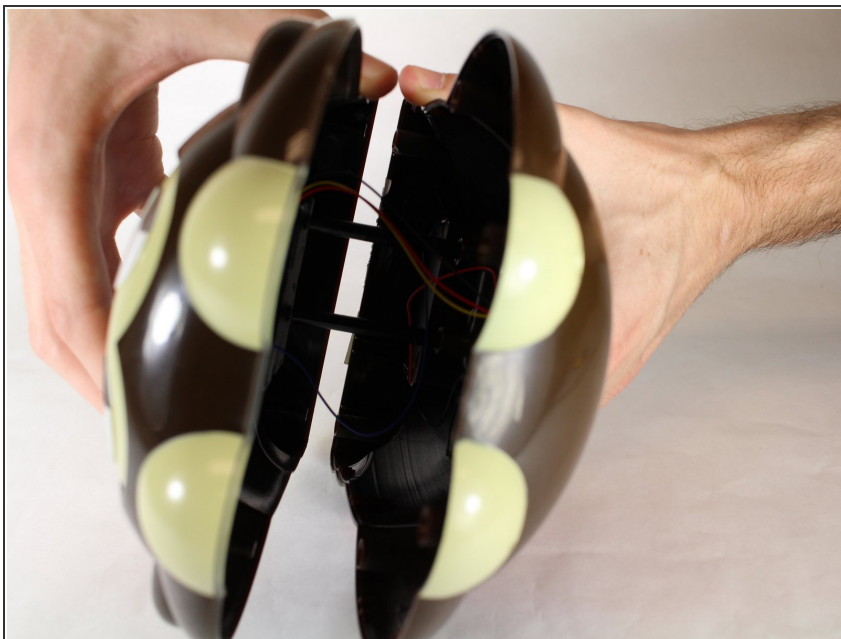
- [Phillips #00 Screwdriver](#) (1)
-

Step 1 — Screw Removal



- Remove all six 7.3 mm screws with a #00 Phillips head screwdriver.

Step 2 — Splitting the Shell in Half



- Firmly pull each half apart.

To reassemble your device, follow these instructions in reverse order.