



# Magic Bullet NutriBullet Curve Base

Written By: Geary Yu



## TOOLS:

Phillips #2 Screwdriver (1)

### Step 1 — Curve Base



- Unplug the device from the wall and turn the powerbase upside down.

### Step 2



- Use a #2 Phillips Head Screwdriver to unscrew the four 10 mm screws located on the bottom of the power base.

### Step 3



- Use slight tension to remove the plastic base from the NutriBullet once all of the screws are removed.

⚠ When reassembling, note the fan located in the center of the powerbase. Make sure the cord does not get caught or frayed by the fan.

### Step 4



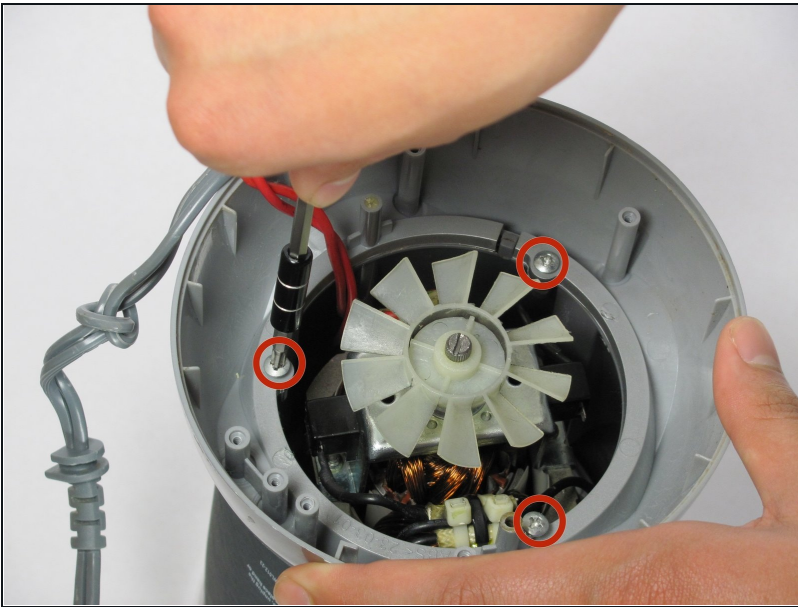
- Lift the power cord to remove it from the side slot on the curved base.

## Step 5



- Use a #2 Phillips Head Screwdriver to remove the two 10 mm screws that secure the white bracket down.
- ⓘ The white safety bracket holds the cord down. After removing it, the cord will be loosened.

## Step 6



- Use a #2 Phillips Head Screwdriver to remove the three 10mm screws that keep the base in place.

## Step 7



- Use slight tension to remove the curved base by lifting it upward off of the outside casing.

---

To reassemble your device, follow these instructions in reverse order.