



Dell Venue 7 Rear Facing Camera Replacement

Use this guide to replace the rear facing...

Written By: Stephen Rousseau



INTRODUCTION

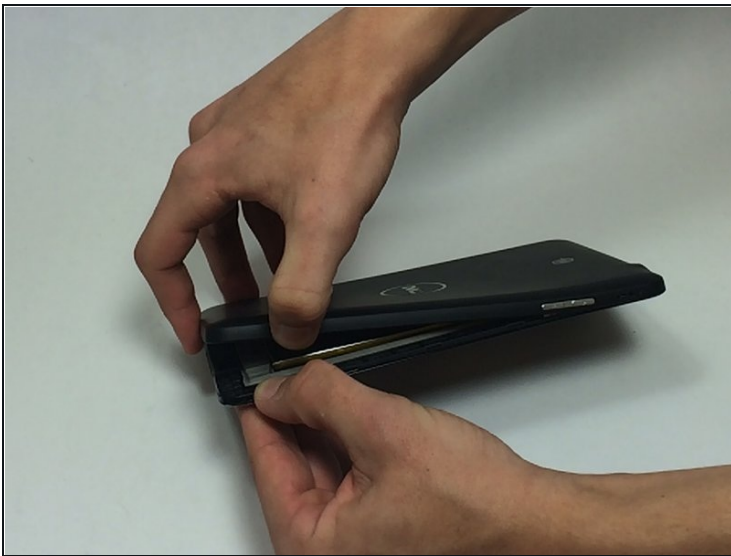
Use this guide to replace the rear facing camera on your Dell Venue 7.

TOOLS:

Spudger (1)

Tweezers (1)

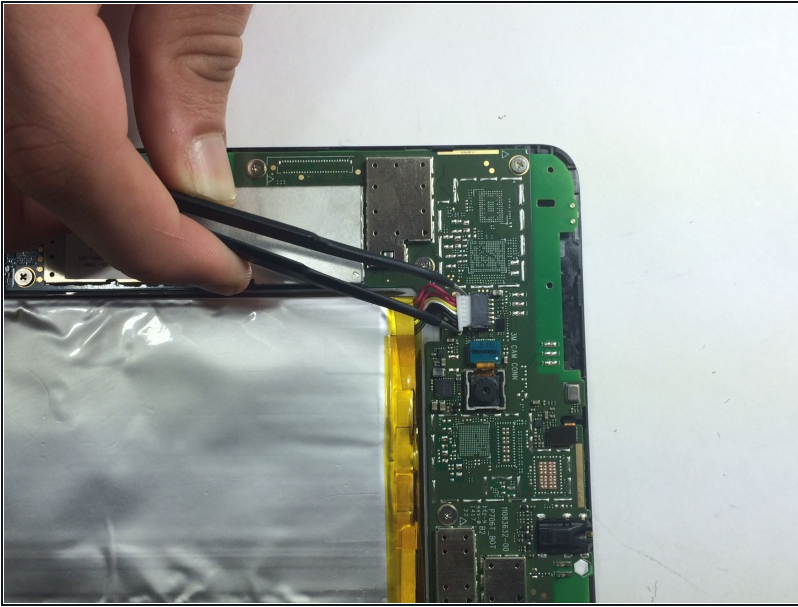
Step 1 — Rear Case



- Use a spudger or your fingers to pry off the back case.

 If your case is badly damaged, use caution because the fragments may be sharp.

Step 2 — Battery



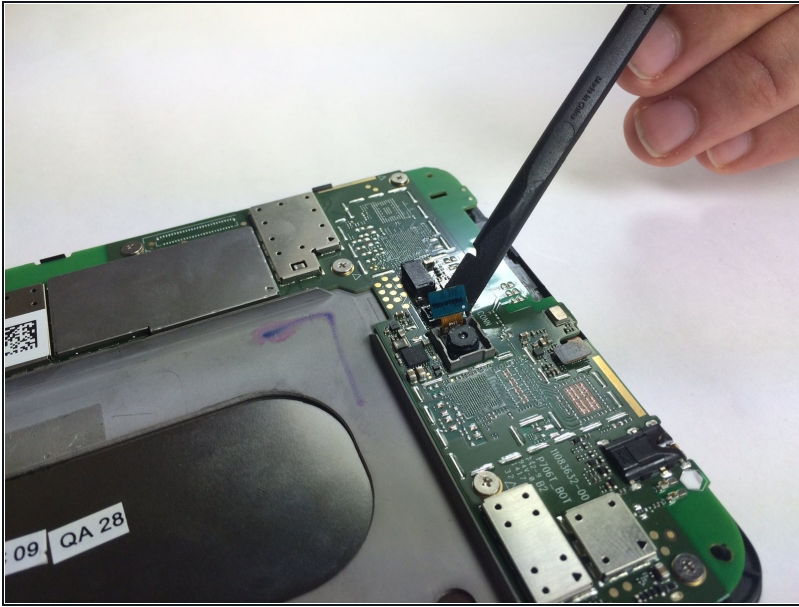
- Gently disconnect the battery from the motherboard using your fingers or a pair of [tweezers](#).

Step 3



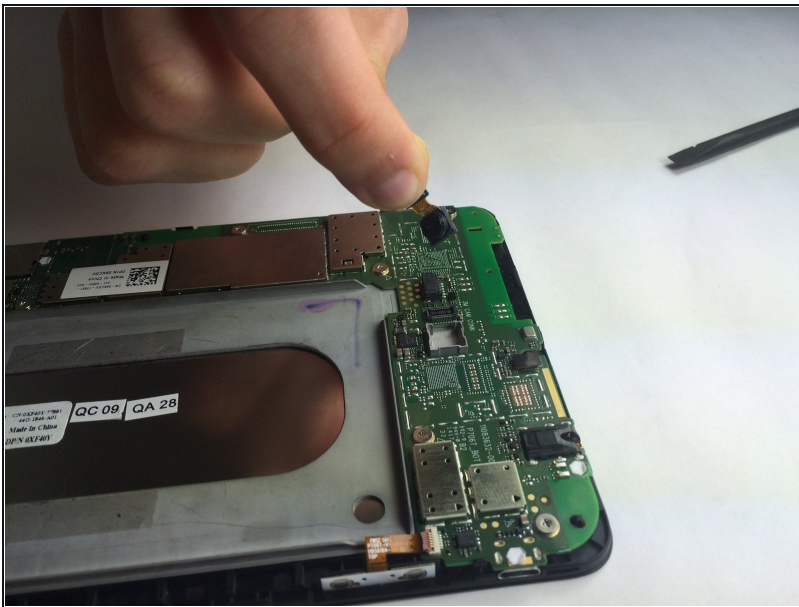
- Remove the battery by pulling it from the edges and carefully peeling it off of the base.
 - ① There is adhesive keeping the battery in place, so don't be afraid to use a little extra force.
- ⚠ Do not bend or warp the battery in any way as it can be a fire hazard.

Step 4 — Rear Facing Camera



- Use a spudger to disconnect the camera from the motherboard.

Step 5



- Remove the camera from the device.

To reassemble your device, follow these instructions in reverse order.