



LG 1010 Keypad Replacement

How to replace a broken keypad in the LG 1010 cellular phone.

Written By: Nicholas Schmidt



INTRODUCTION

This repair guide will instruct the user on the proper technique for removing and replacing a broken keypad for a LG 1010 Cell Phone.

TOOLS:

- [Flathead 3/32" or 2.5 mm Screwdriver](#) (1)
 - [T6 Torx Screwdriver](#) (1)
-

Step 1 — Battery



- Turn off the cell phone and place face down on a flat surface.

Step 2



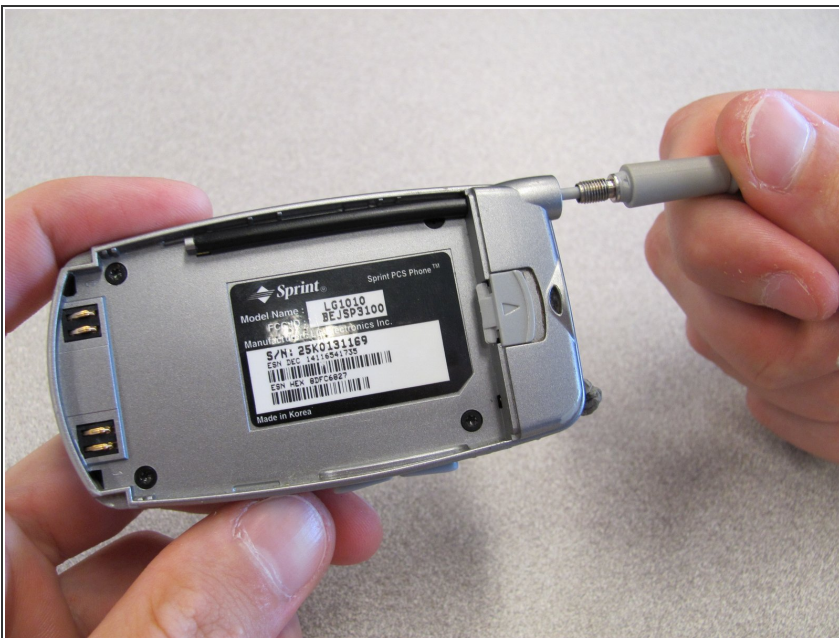
- While sliding the gray tab up, lift battery up and away from the cell phone.

Step 3



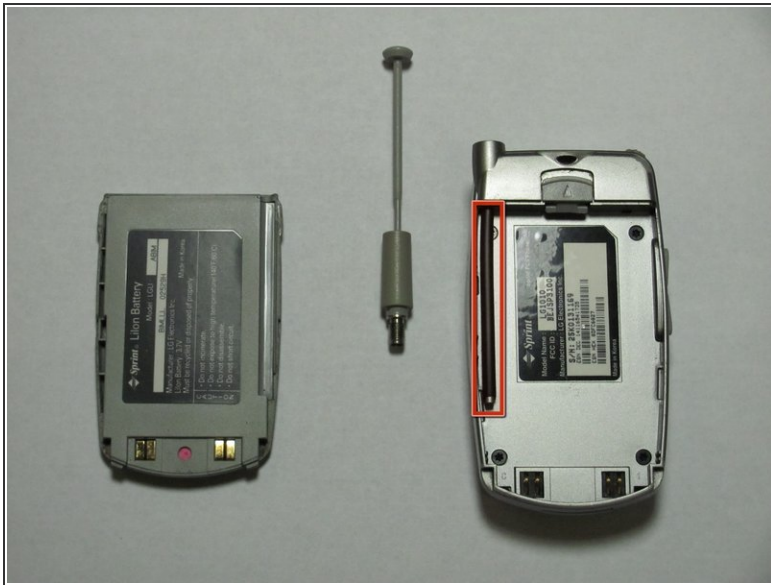
- Remove battery and set aside.

Step 4 — Antenna



- While holding cell phone firmly in one hand, unscrew and remove the antenna with the other hand.

Step 5



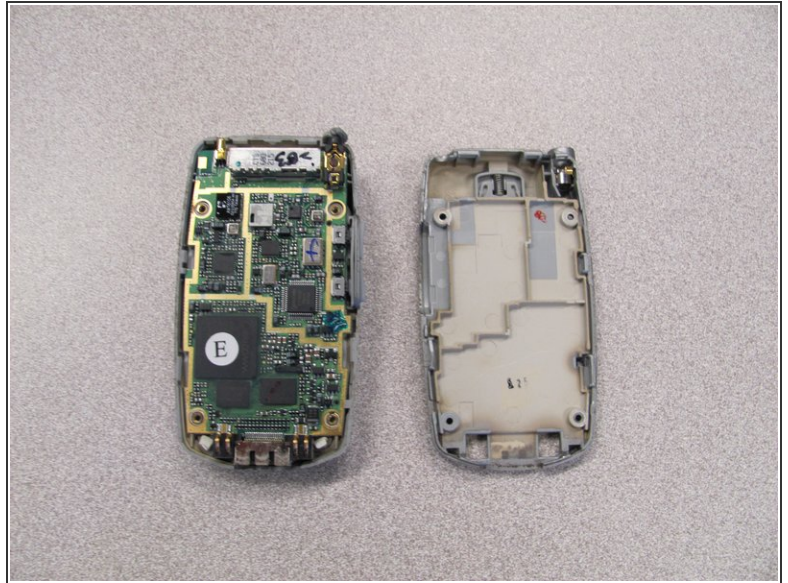
- Pull the antenna housing (black tube) towards bottom of phone and remove.

Step 6 — Back Cover



- Unscrew the four screws on the back case using a T6 Torx Screwdriver.

Step 7



- Pull the back cover straight off the phone using your thumb and forefinger.

Step 8 — Keypad



- Pry off circuit board with a flathead screwdriver.

Step 9



- Pull out flexible keypad.

Install new keypad and reassemble following these instructions in reverse order.