



Logitech M215 Cover Release Button Replacement

Replace the cover release button if it malfunctions.

Written By: Hannah Pate





TOOLS:

- [Phillips #0 Screwdriver](#) (1)
 - [iFixit Opening Picks set of 6](#) (1)
 - [Plastic Cards](#) (1)
-

Step 1 — Remove the battery cover



- The battery compartment cover is located on the top of the mouse. The seam running horizontally across the mouse is the top of the cover.
- There is a button to pop off the cover. It is located on the bottom of the mouse. you may need to press hard on this button to pop the cover.
- If the button does not work, you will need to pry off the cover. You can use your fingernails or a prying tool in order to do this, as seen in the third image.

Step 2 — Remove old battery



- Remember to insert the new battery in the same orientation as the old one. The positive (plus) end should be facing away from the buttons.

Step 3 — Top Cover



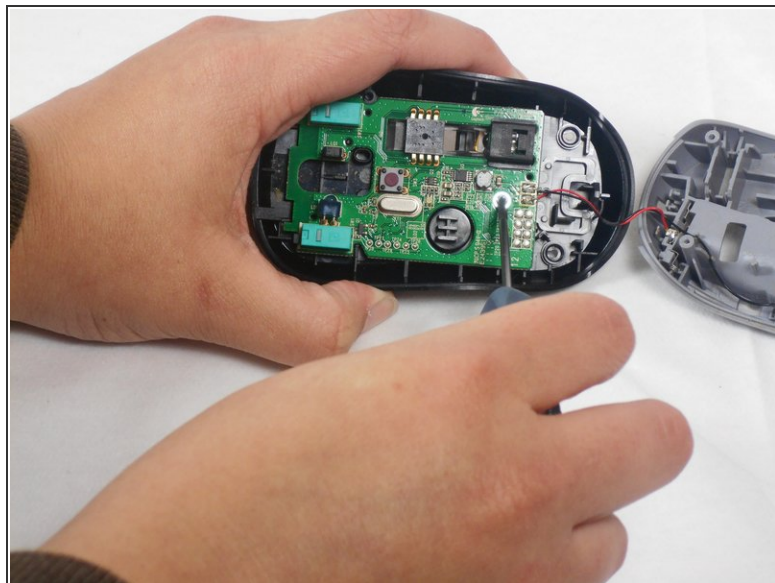
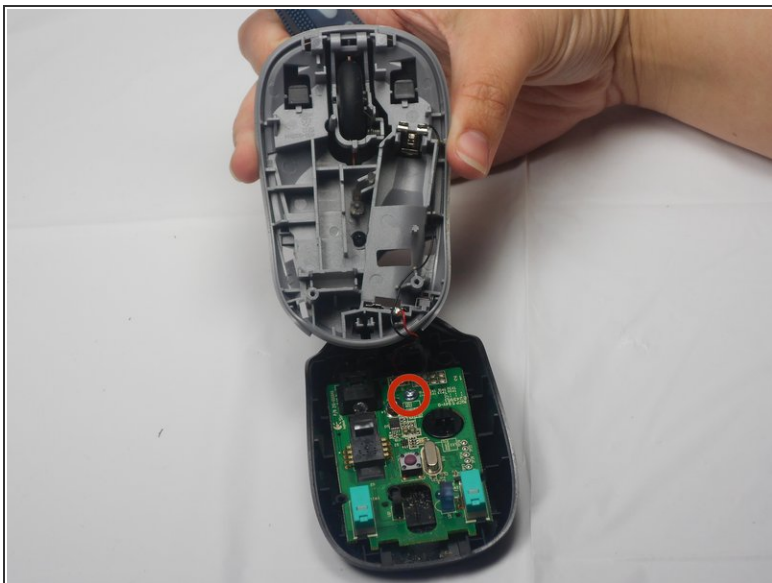
- The pads on the underside of the mouse hide the screws. Remove these first. You may need to use your fingernails or a prying tool.
- There will be two 0.5mm phillips head screws. Both will be underneath the bottom two pads.

Step 4



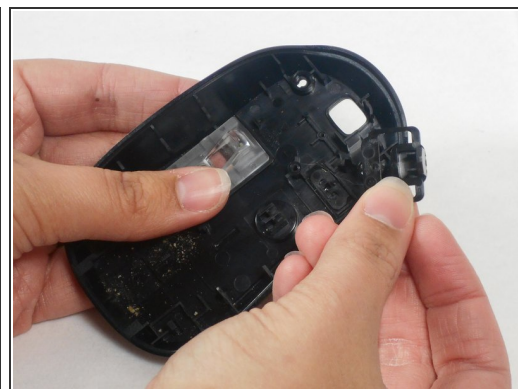
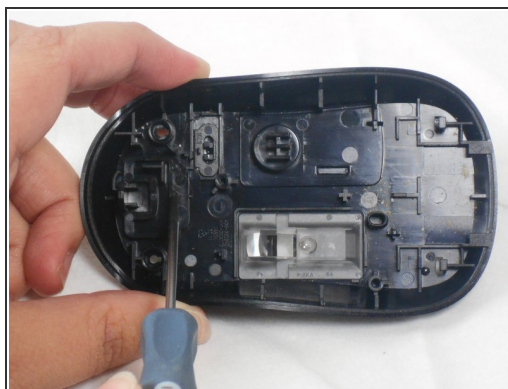
- Pry the top cover off. You may need to use a pry tool to help.

Step 5 — Motherboard



- Unscrew the 0.25mm phillips head screw to release the circuit board.

Step 6 — Cover Release Button



- Unscrew the 0.25mm phillips head screw holding the button in place. The cover release button can then be removed.

To reassemble your device, follow these instructions in reverse order.