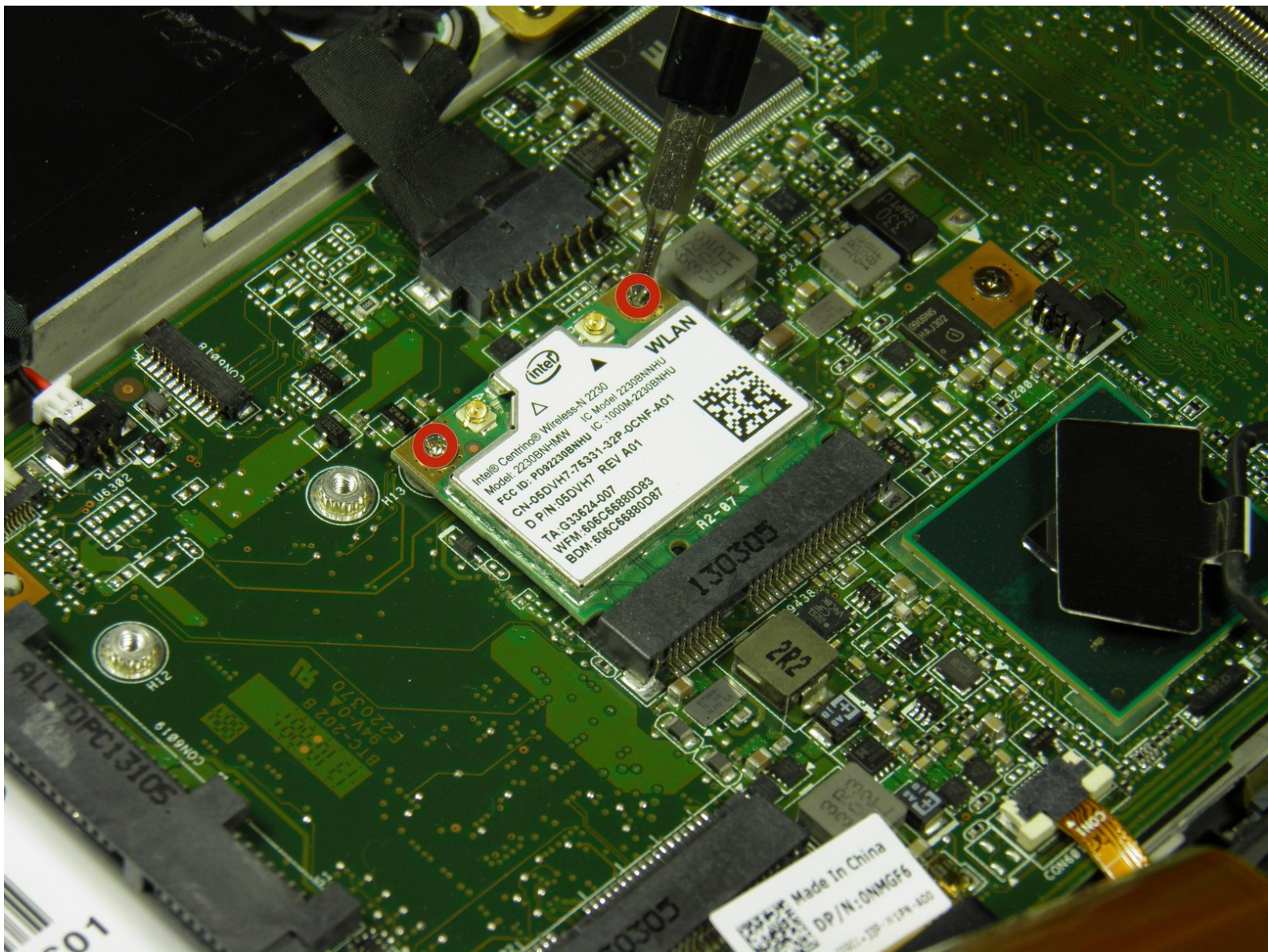




Dell XPS 18 Wireless WLAN Card Replacement

This guide will instruct users on how to remove the Wireless WLAN card for the Dell XPS 18 (1810). Useful for devices that can no longer connect to wifi.

Written By: Austin Weir



INTRODUCTION

This guide will show how to replace the wireless WLAN card in your Dell XPS 18. It may need to be replaced if you can no longer connect to wireless internet.



TOOLS:

- [Phillips #00 Screwdriver](#) (1)
 - [iFixit Opening Tools](#) (1)
 - [T9 Torx Screwdriver](#) (1)
-

Step 1 — Back Cover



- Turn the device on its screen.
- Remove the ten 4mm screws using a T8 Torx screwdriver.

Step 2



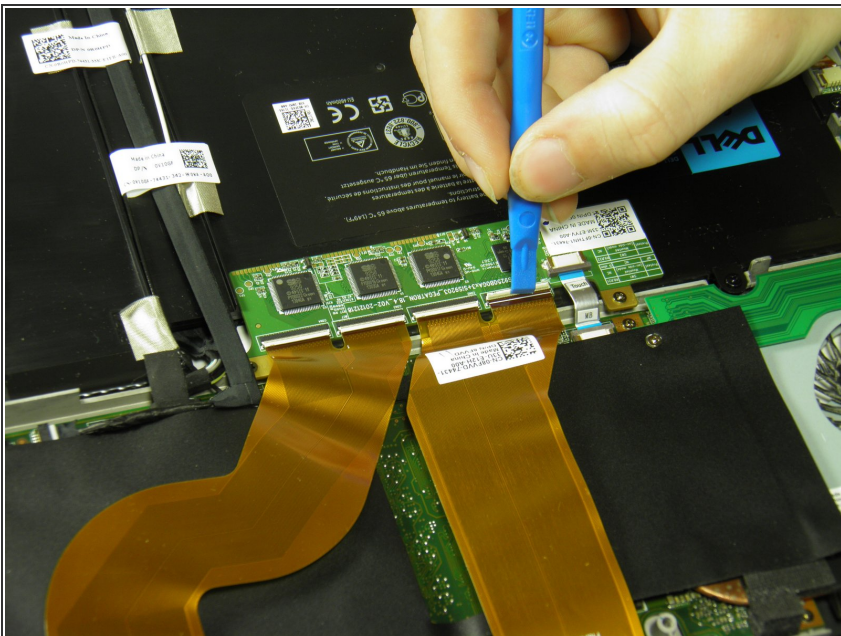
- Gently flip out support feet located near the bottom of device.

Step 3



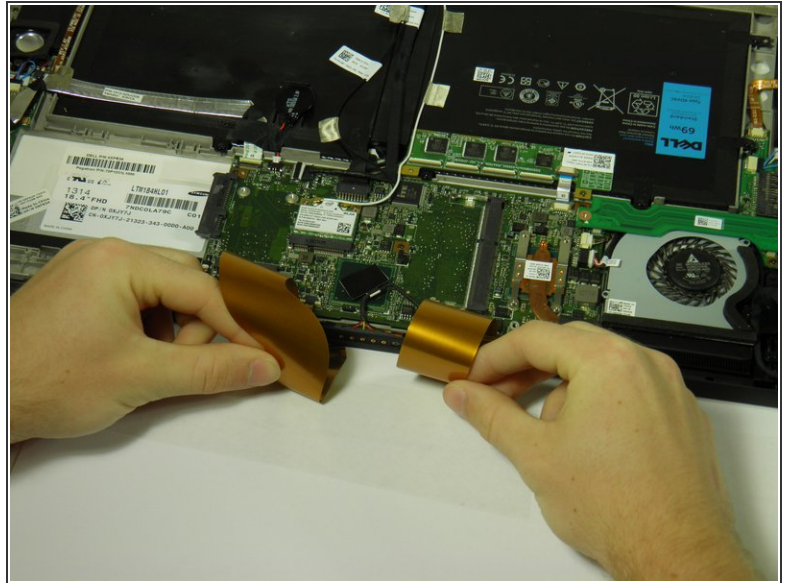
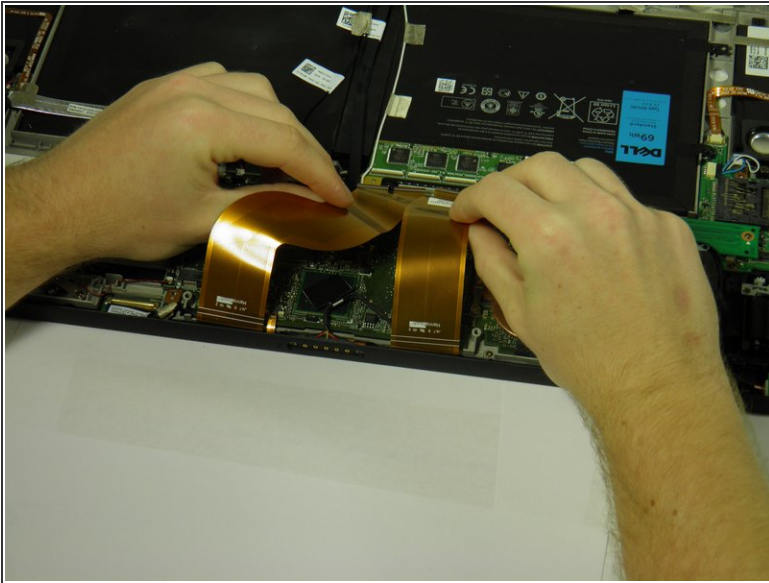
- Gently lift the back cover off the device. The back cover should come off easily.

Step 4 — Internal Cover



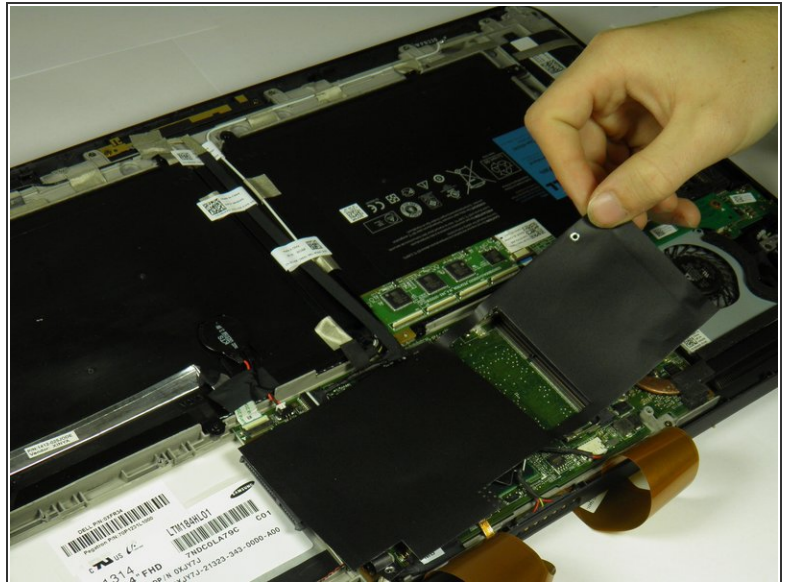
- Use the opening tool's angled edge to lift the clasps securing the screen and motherboard cables.

Step 5



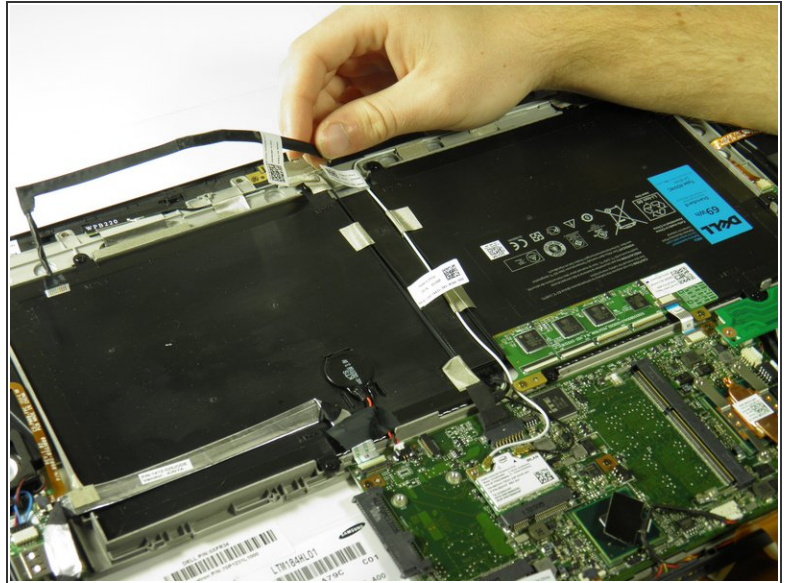
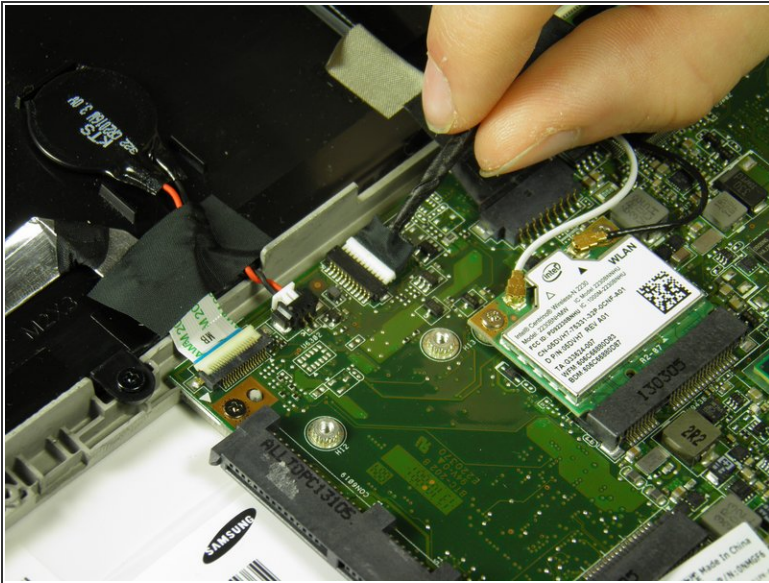
- Disconnect the screen and copper colored motherboard cables and tuck them under the device to prevent future hassle.

Step 6



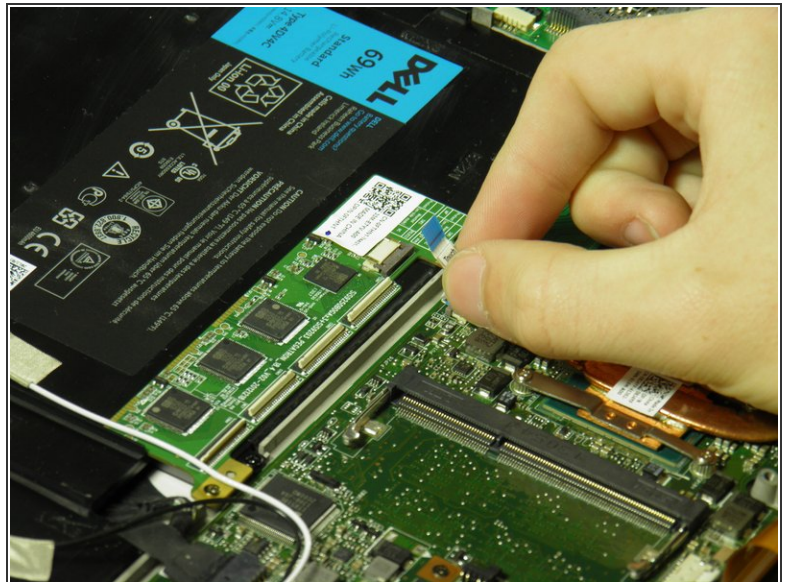
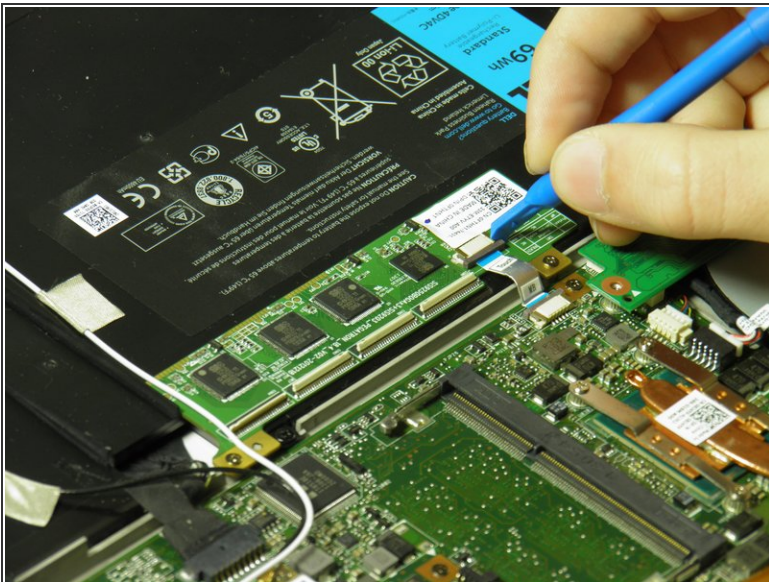
- Remove the two black 3mm screws from the internal cover with a Phillips 00 screwdriver.
- Remove the internal cover.

Step 7 — Touch Control Board



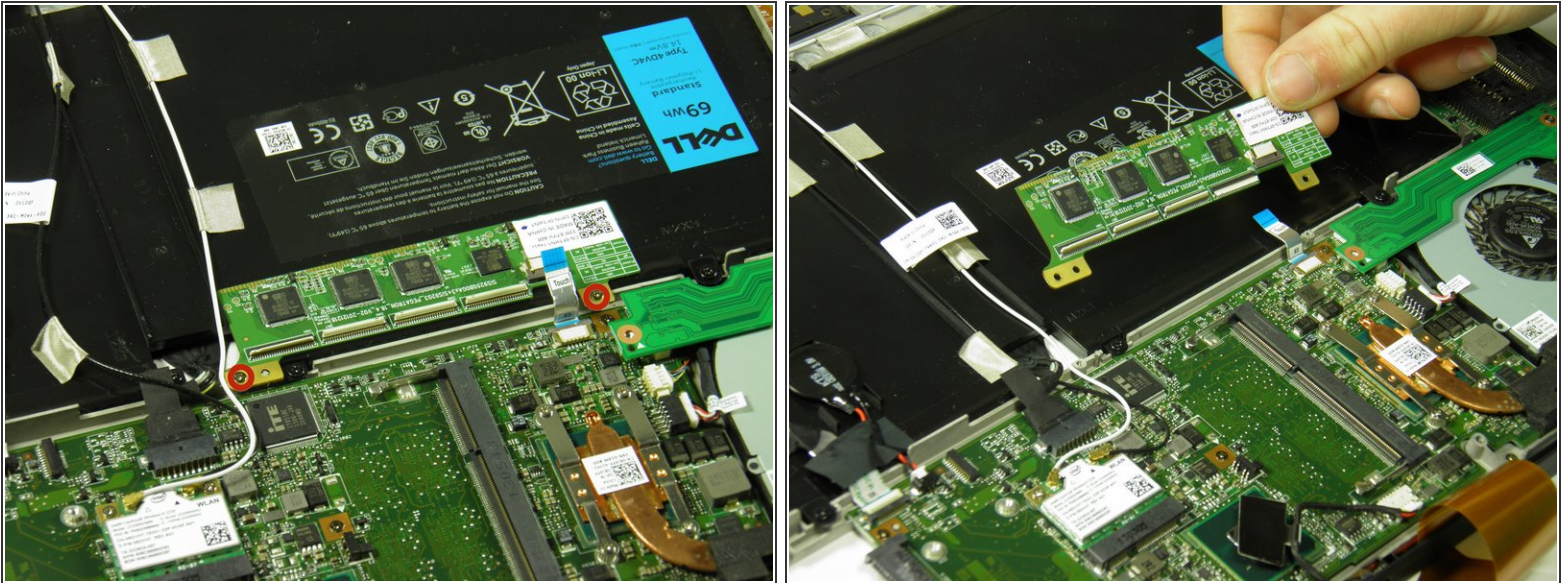
- Disconnect the black camera cable and pull it back to prevent future hassle.

Step 8



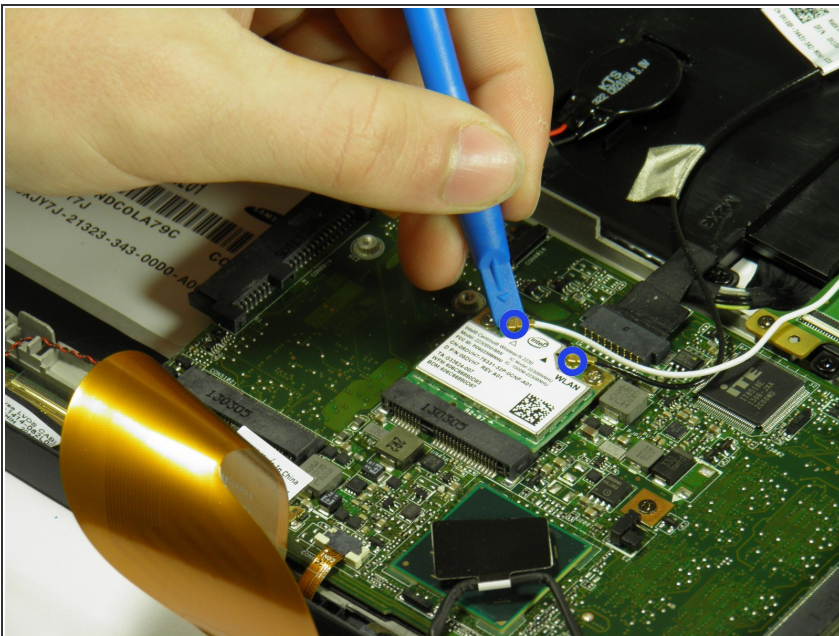
- Use the angled edge of the plastic opening tool to lift the clasp securing the touch control board cable.
- Disconnect the silver and blue touch control board cable.

Step 9



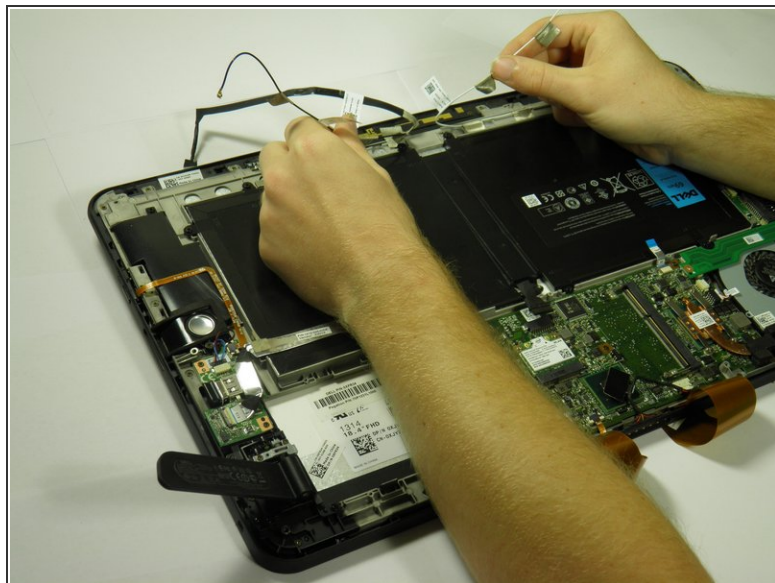
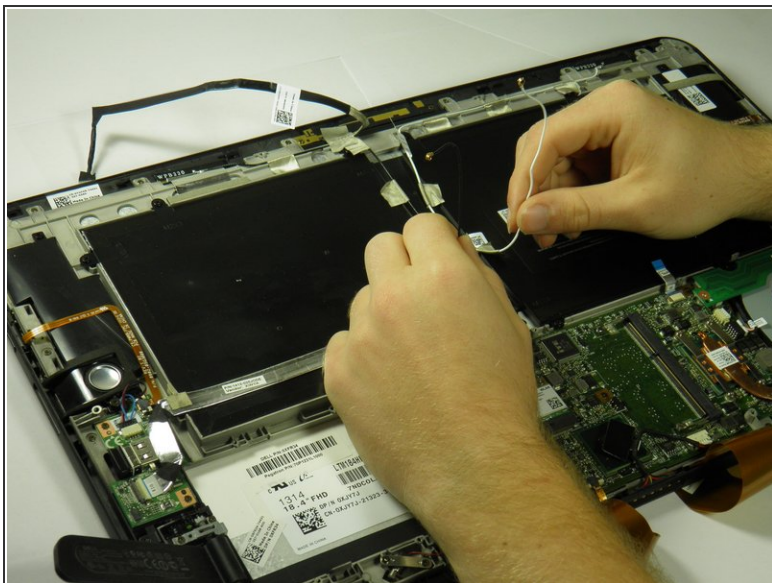
- Remove the two silver 3mm screws holding the touch control board in place with a Phillips 00 screwdriver.
- Remove the touch control board.

Step 10 — Wireless WLAN Card Wires



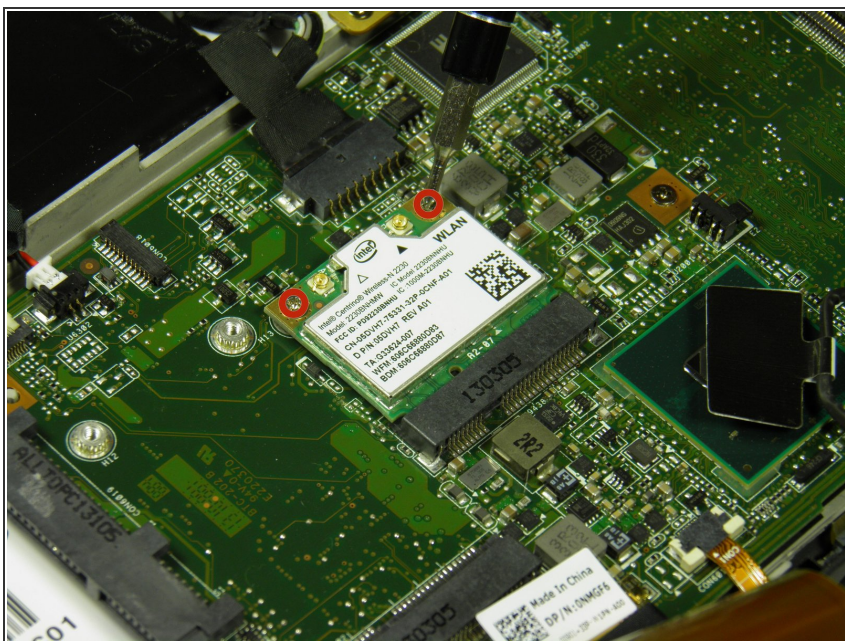
- Use the plastic opening tool's angled edge to remove the black and white wires connected to the wireless WLAN card.

Step 11



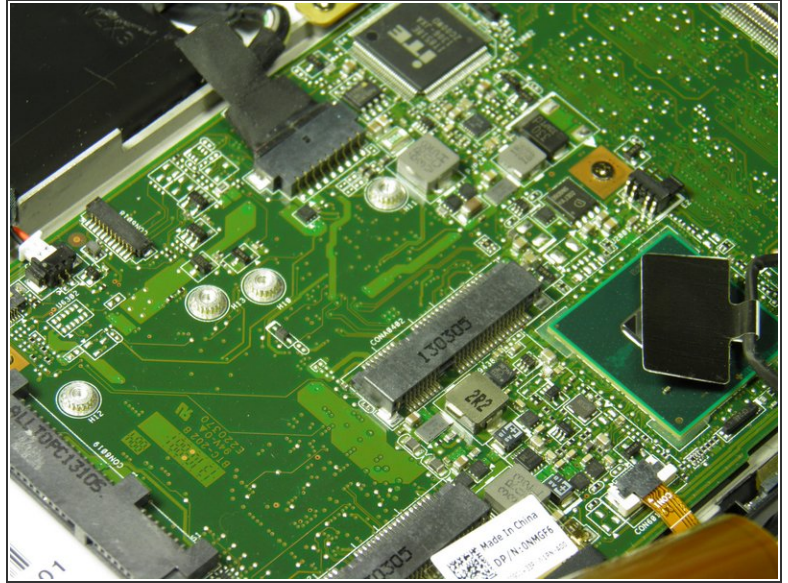
- Pull back the cables.

Step 12 — Wireless WLAN Card



- Remove the two silver 3mm screws with a Phillips 00 screwdriver.

Step 13



- Angle the wireless WLAN card upward and remove it.

To reassemble your device, follow these instructions in reverse order.