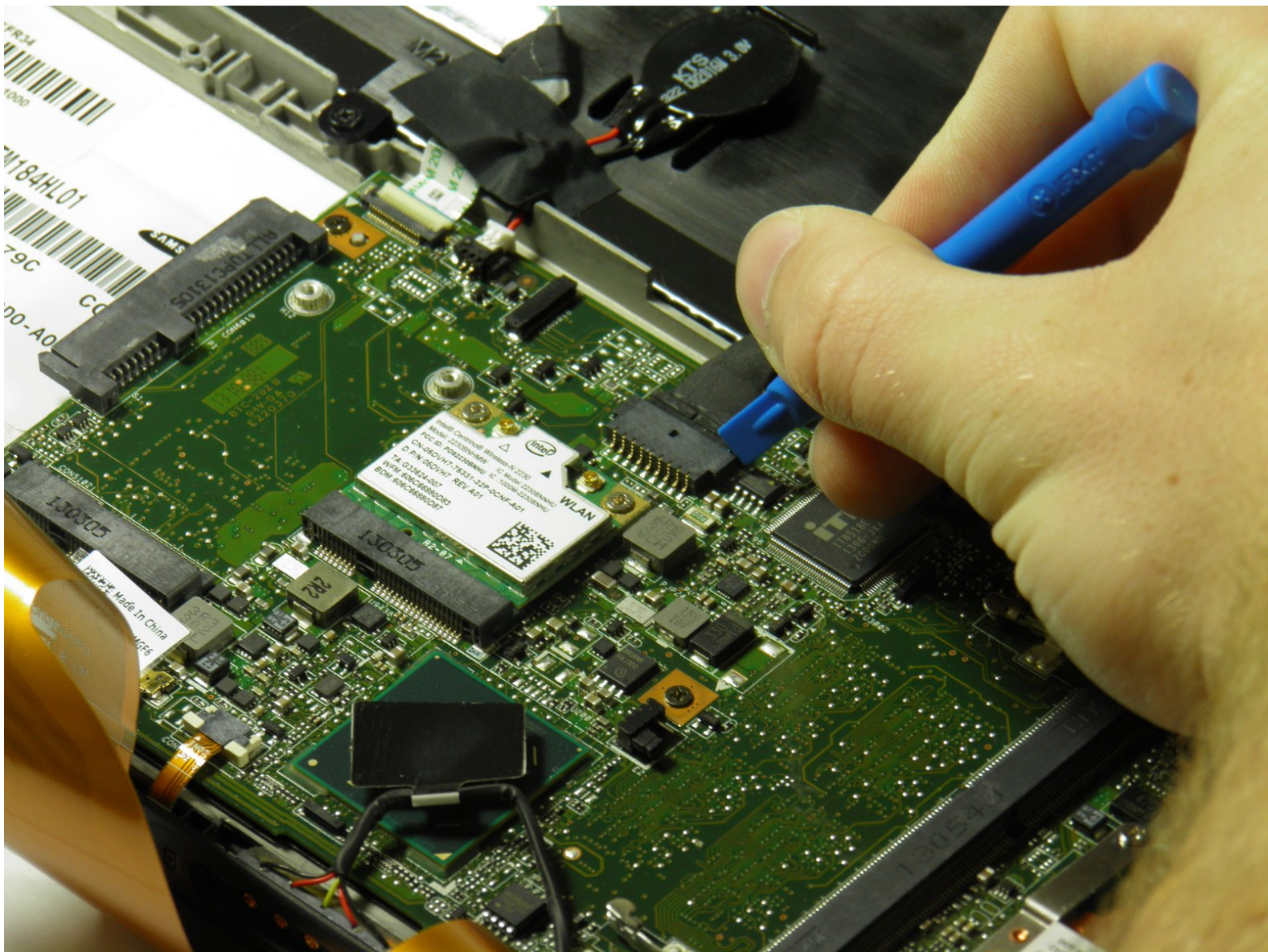




Dell XPS 18 Battery Replacement

This guide will instruct users on how to replace the battery of the Dell XPS 18 (1810). Useful for devices that won't turn on, won't stay charged, or have general battery issues.

Written By: Austin Weir



INTRODUCTION

This guide will show you how to replace the battery for your Dell XPS 18 if it has failed.



TOOLS:

- [Phillips #00 Screwdriver](#) (1)
 - [iFixit Opening Tools](#) (1)
 - [T8 Torx Screwdriver](#) (1)
-

Step 1 — Back Cover



- Turn the device on its screen.
- Remove the ten 4mm screws using a T8 Torx screwdriver.

Step 2



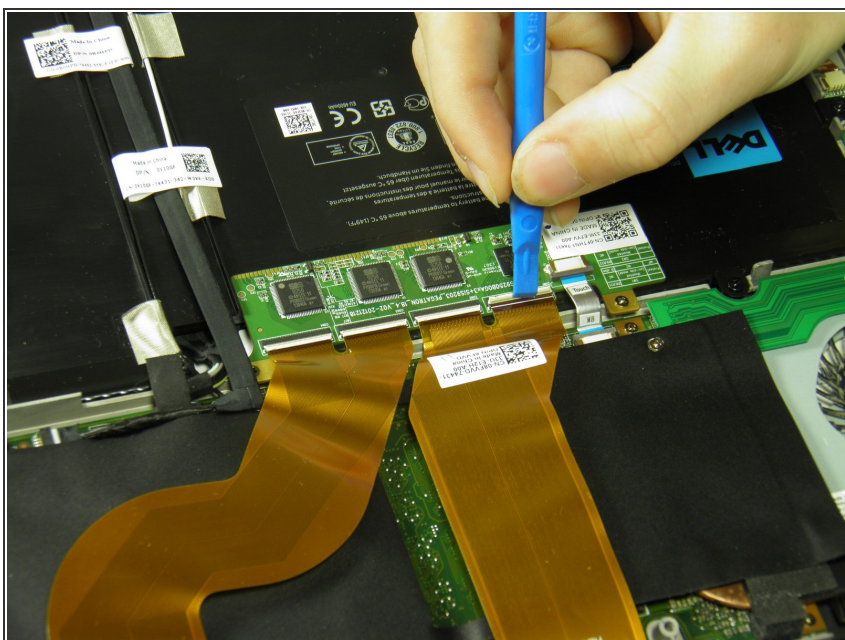
- Gently flip out support feet located near the bottom of device.

Step 3



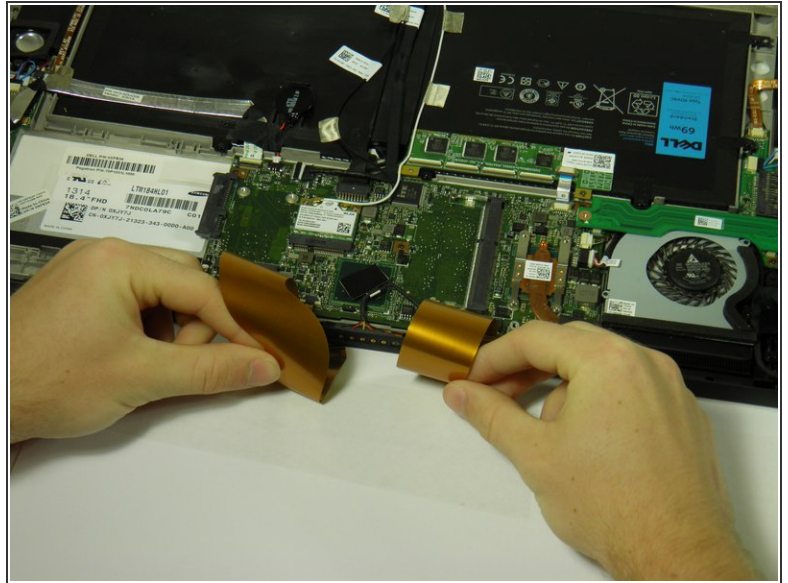
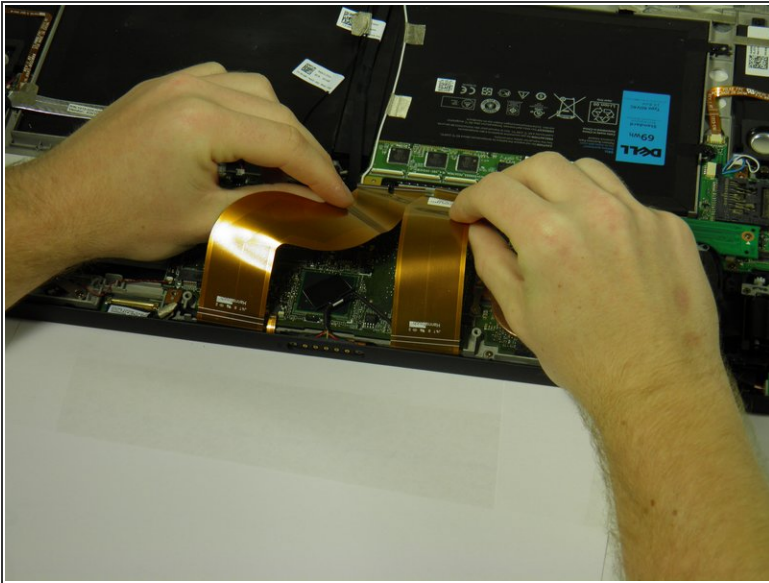
- Gently lift the back cover off the device. The back cover should come off easily.

Step 4 — Internal Cover



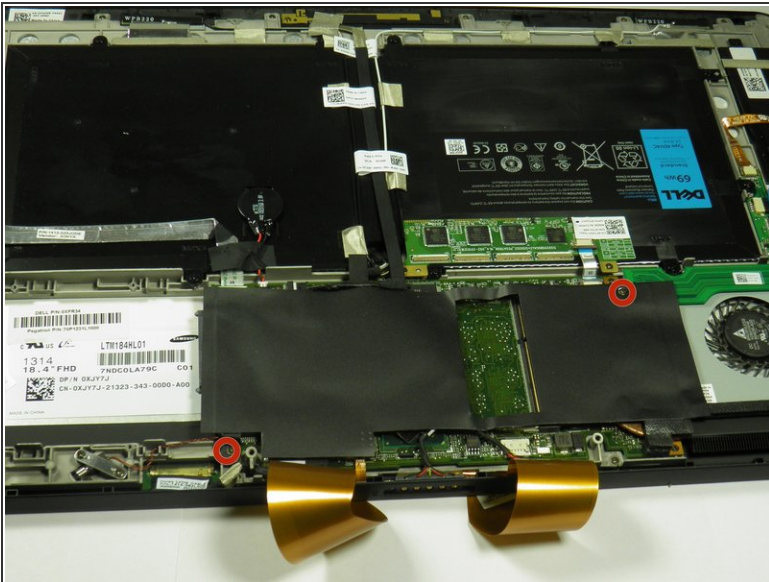
- Use the opening tool's angled edge to lift the clasps securing the screen and motherboard cables.

Step 5



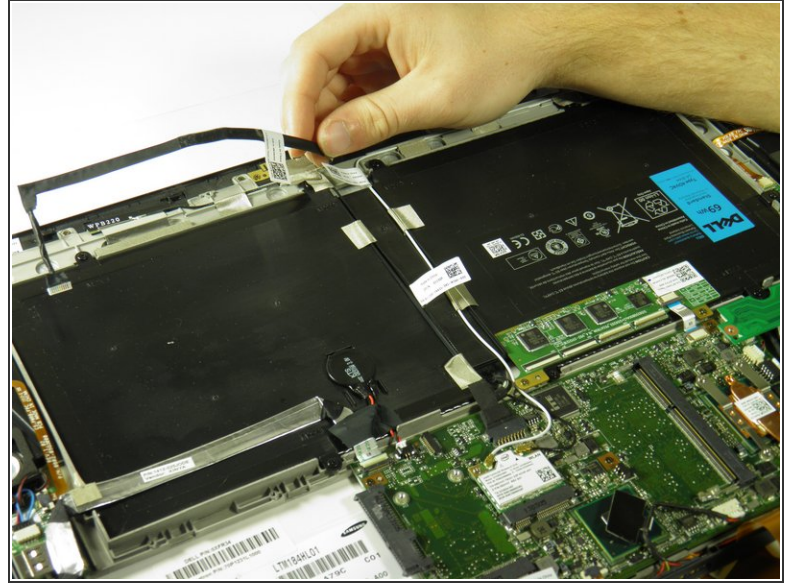
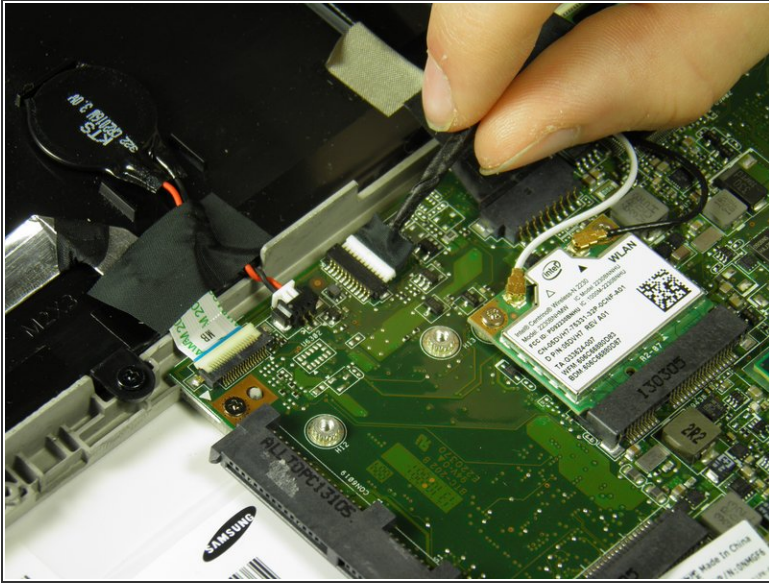
- Disconnect the screen and copper colored motherboard cables and tuck them under the device to prevent future hassle.

Step 6



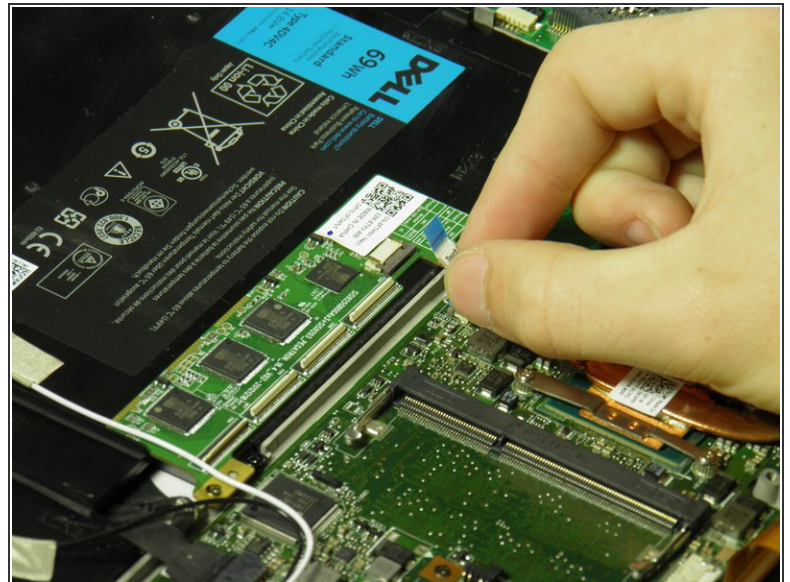
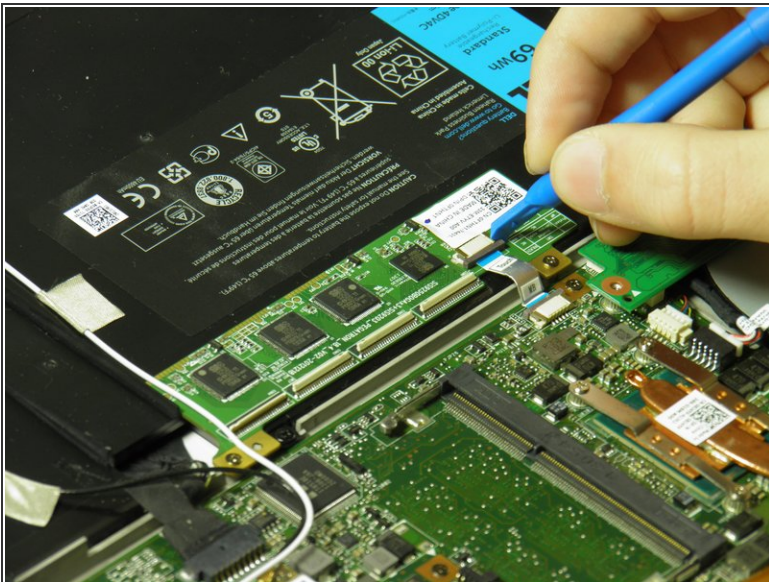
- Remove the two black 3mm screws from the internal cover with a Phillips 00 screwdriver.
- Remove the internal cover.

Step 7 — Touch Control Board



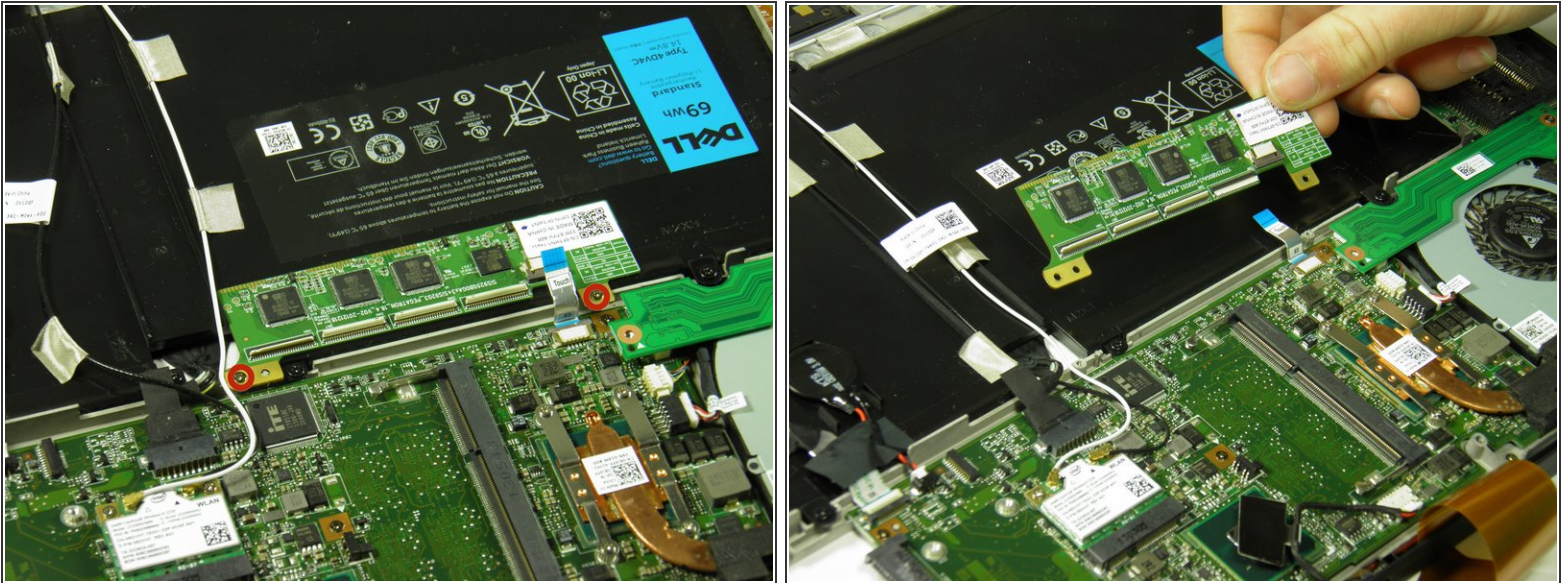
- Disconnect the black camera cable and pull it back to prevent future hassle.

Step 8



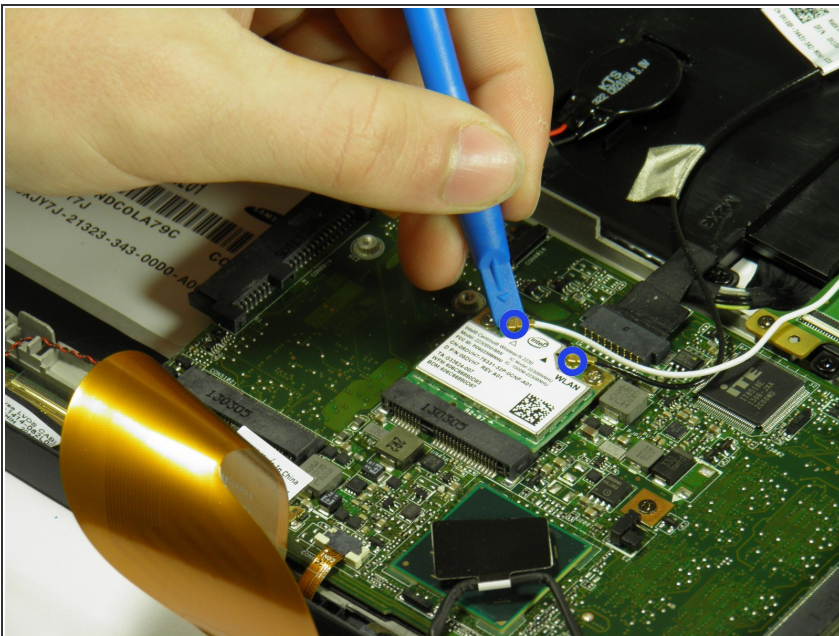
- Use the angled edge of the plastic opening tool to lift the clasp securing the touch control board cable.
- Disconnect the silver and blue touch control board cable.

Step 9



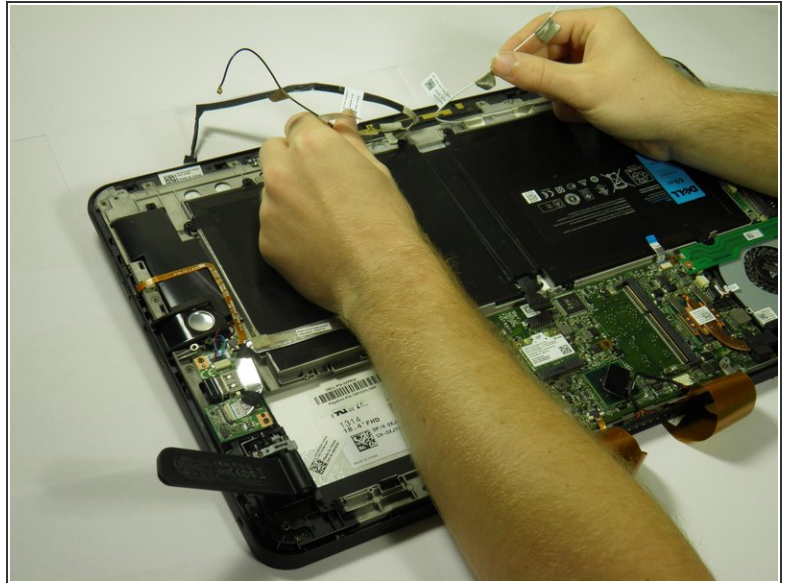
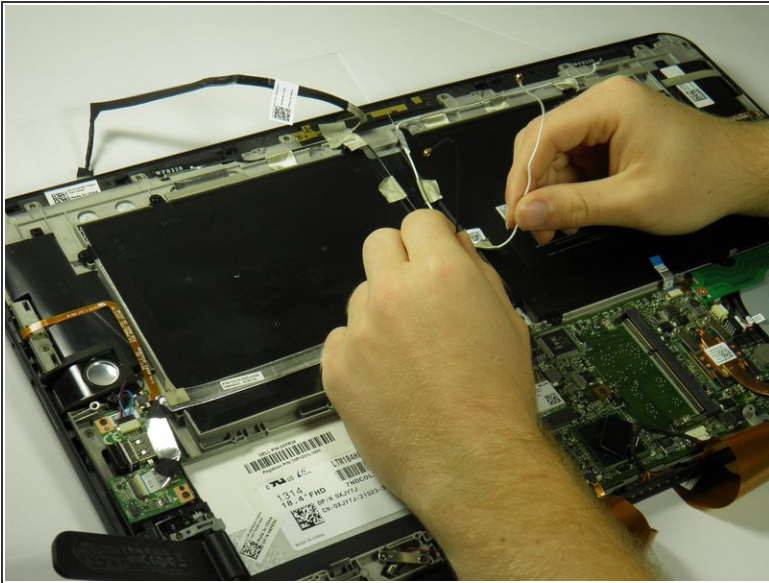
- Remove the two silver 3mm screws holding the touch control board in place with a Phillips 00 screwdriver.
- Remove the touch control board.

Step 10 — Wireless WLAN Card Wires



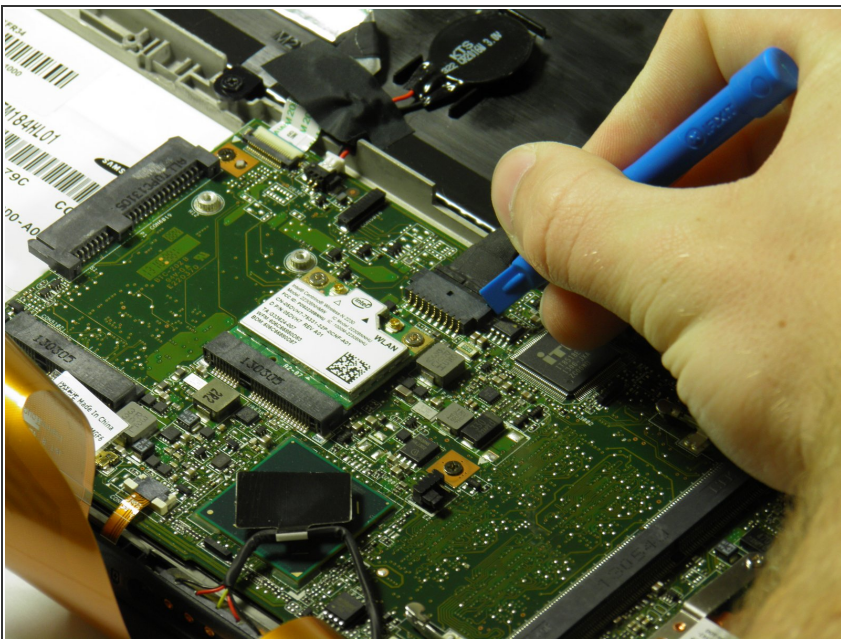
- Use the plastic opening tool's angled edge to remove the black and white wires connected to the wireless WLAN card.

Step 11



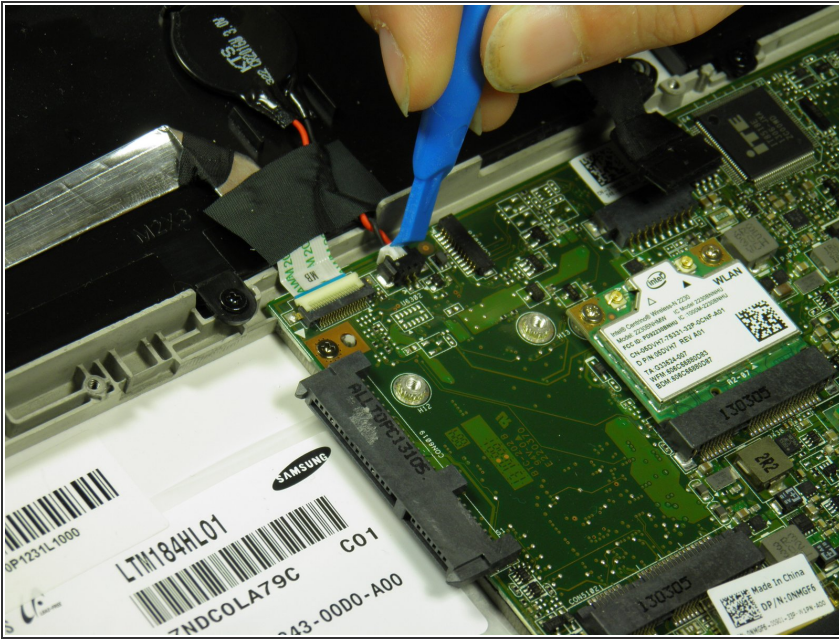
- Pull back the cables.

Step 12 — Battery



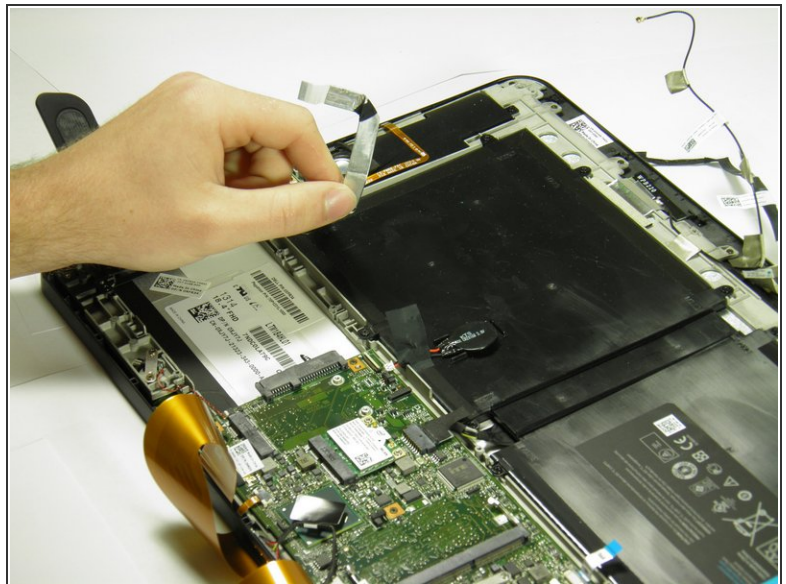
- Use the plastic opening tool's angled edge to pry the black battery cable loose.

Step 13



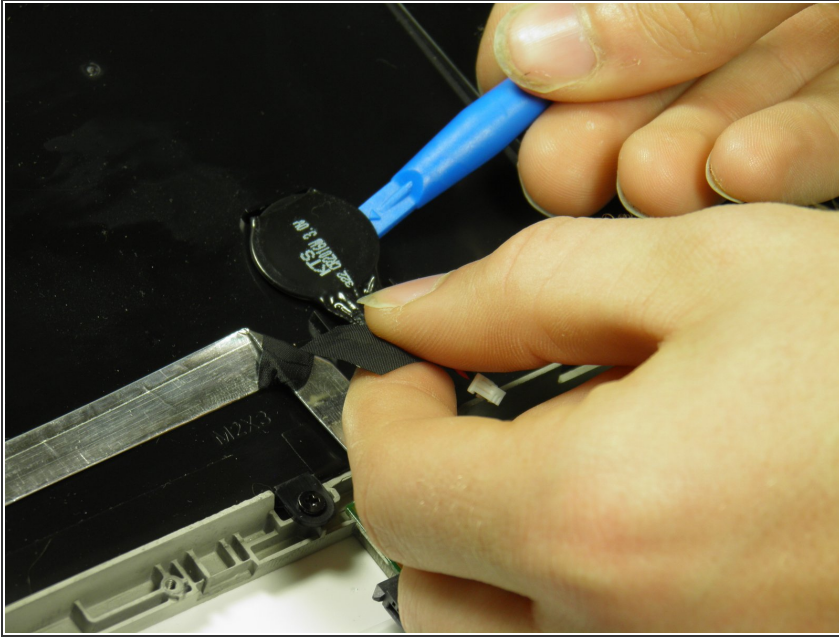
- Use the plastic opening tool's angled edge to remove the red and black CMOS battery cable.

Step 14



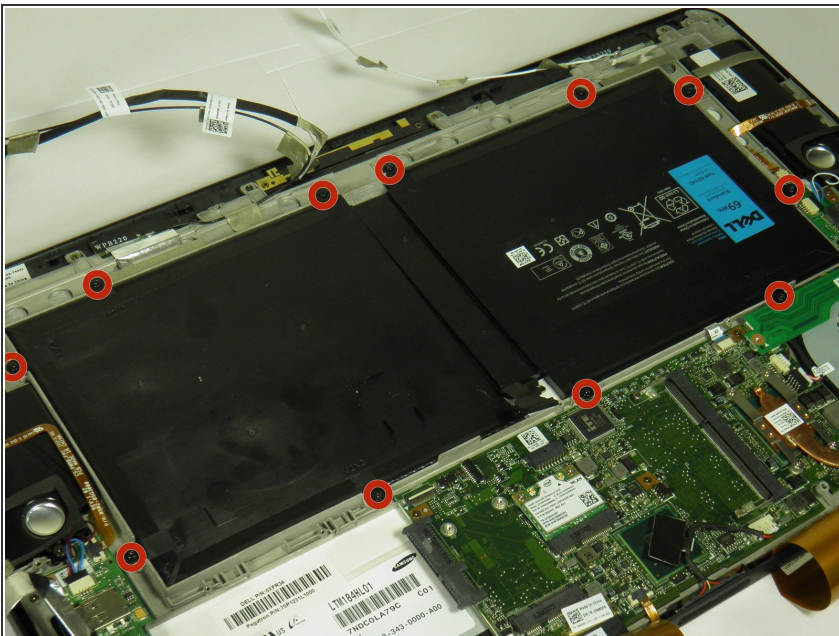
- Use the plastic opening tool's angled edge to lift the clasp securing the silver circuit board cable.
- Pull back the circuit board cable to prevent future hassle.

Step 15



- Use the opening tool's angled edge to remove the CMOS battery.
- ⓘ The CMOS battery is adhered with strong adhesive; you may need to use extra force when removing.

Step 16



- Remove the eleven black 4mm screws holding the battery in place with a Phillips 00 screwdriver.

Step 17



- Remove the battery.

To reassemble your device, follow these instructions in reverse order.