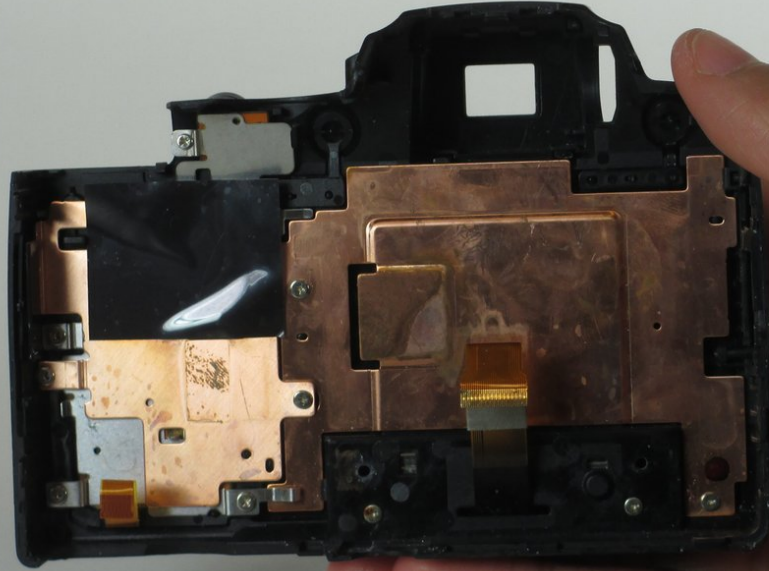




Nikon COOLPIX P500 Rear Case Replacement

Replace the rear case.

Written By: Kevin Scott



INTRODUCTION

This is a guide that demonstrates how to isolate the rear case of your camera from the rest of the device.




TOOLS:

- [Phillips #00 Screwdriver](#) (1)
 - [Spudger](#) (1)
-

Step 1 — Battery



 Electric shock is a huge risk if the battery is not removed while taking the camera apart.

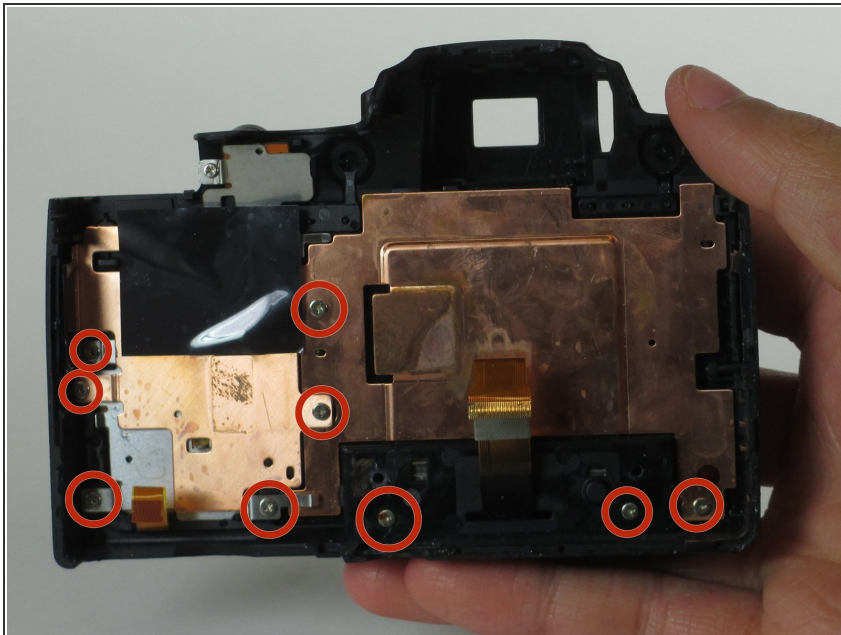
- Press down and forward on the battery cover latch.
- Push the orange latch, in the direction of the arrow on it, to release the battery.

Step 2 — Rear Case



- Remove the marked 3mm screws.
- Separate the two parts of the body of the camera slightly.
- ⚠ Make sure not to pull too hard because there are connector ribbons.
- Detach the connector ribbons before fully separating the camera into two pieces.

Step 3



- Remove the labeled 3mm screws using a PH00 screwdriver.

Step 4



- Remove the brown metal plate.

To reassemble your device, follow these instructions in reverse order.