



# HP TouchSmart 15-r015dx Hard Drive Replacement

These steps will help you in the replacement of...

Written By: Jacob Kleinsorge



## INTRODUCTION

These steps will help you in the replacement of the HP TouchSmart 15-r015dx Hard Drive. A hard drive is the hardware component that stores all of your digital content. Your documents, pictures, music, videos, programs, application preferences, and operating system represent digital content stored on a hard drive. Failure of the hard drive could result in not being able to access your computer (i.e. computer boots up but you cannot do anything on the screen) or an invalid memory access message.

**Before beginning**, try and back up your hard drive if possible. Failure to back up the computer could result in loss of files.

Follow this link for steps to back up your computer:

++<https://support.microsoft.com/en-us/help...>

**After** backing up your computer make sure to power off your device completely after and disconnect from any external power source. Failure to do so could result in more damage to the computer.



### TOOLS:

[iFixit Opening Tool](#) (1)  
[Phillips #00 Screwdriver](#) (1)




### PARTS:


[Crucial MX500 1 TB SSD](#) (1)  
[Crucial MX500 250 GB SSD](#) (1)  
[Crucial MX500 500 GB SSD](#) (1)  
[2 TB SSD](#) (1)

---

## Step 1 — Battery



 Turn off your laptop.

 Ensure your laptop is off.  
Removing the battery while it is on may harm your laptop or yourself.

- Flip over to view the bottom of the laptop in order to gain access the battery and the DVD±RW Drive.

## Step 2



- There are two battery release switches circled.

### Step 3



- slide release switches inward towards each other to release battery.

### Step 4



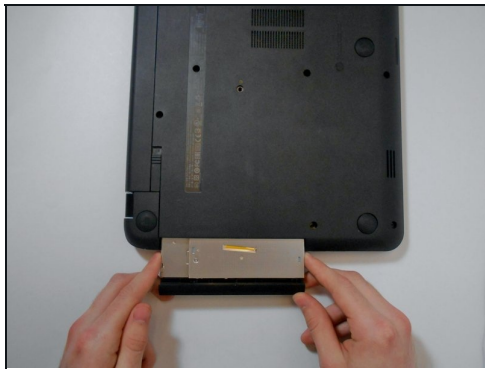
- after sliding the release switches, pull battery towards yourself to remove battery.

## Step 5 — DVD±RW Drive



- There is one screw holding the DVD±RW Drive in place. Use the #00 screwdriver to remove the screw.

## Step 6



- The DVD±RW Drive is here. Remove by gently pulling it straight out.
- After removal of the DVD±RW Drive, two screws are exposed and must be removed.

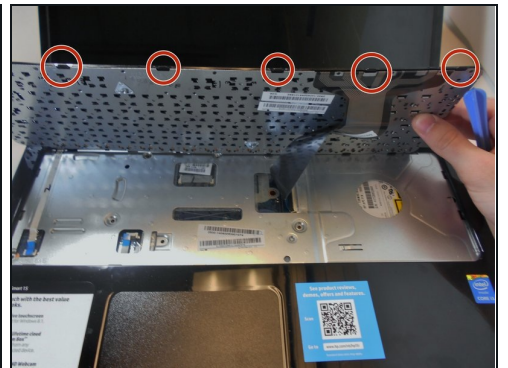
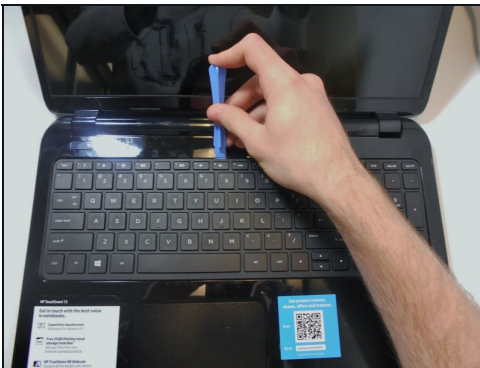


## Step 7 — Keyboard



- Using your Phillips #00 screwdriver, remove the two screws to loosen the fittings of the keyboard.
- ⓘ One of the screws lies in the label.

## Step 8



- Flip the laptop over to view the top and lift the screen up.
  - There are sixteen clips holding the keyboard in place. Gently pry up each clip using a plastic opening tool. Once all clips are loose, lift the keyboard from the computer.
- ⚠ Do NOT pull the keyboard up more than 2-3 inches as there is a film-material connecting the keyboard to the laptop.

## Step 9

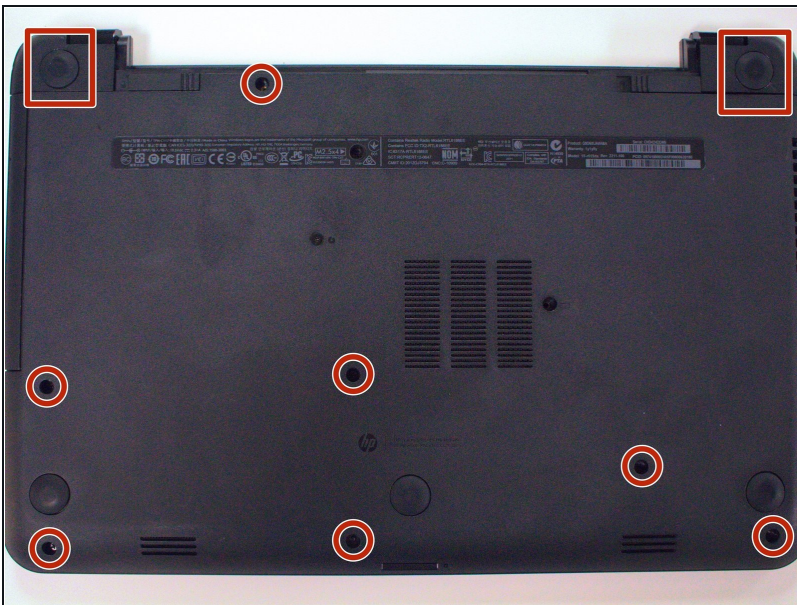


**i** There is a small black latch holding the film-material in place.

- Flip the black latch up to release the film-material. Once flipped up, simply pull the film-material out from the laptop to release the keyboard.

**⚠** There are tiny prongs on the ribbon; it must be carefully removed and upon re-installation the prongs must be lined up exactly in each tiny track in order for the keyboard to work.

## Step 10 — Hard Drive

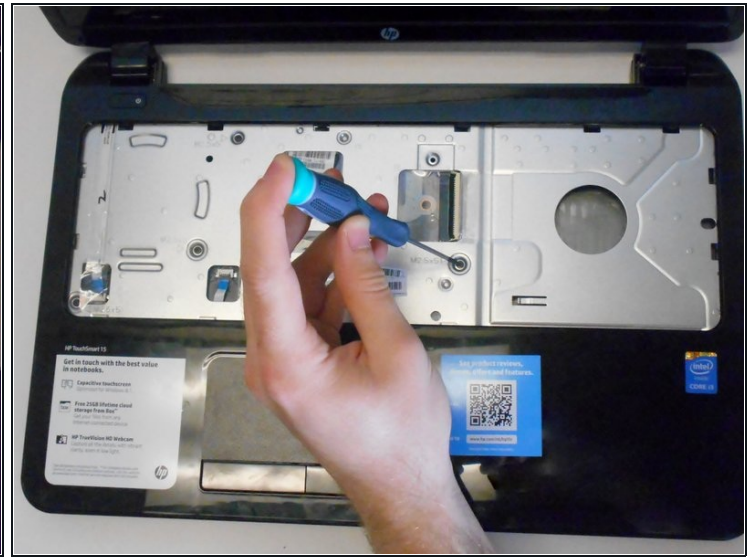
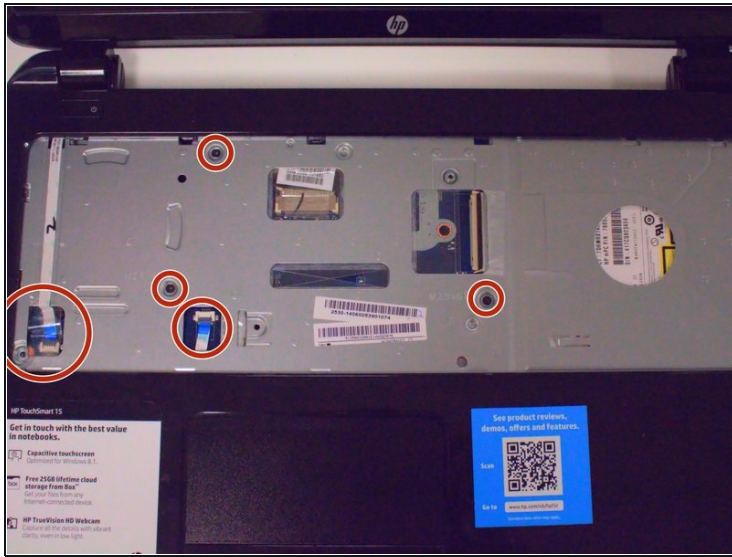


- Flip the laptop over to view the bottom and remove the remaining screws from the bottom.

**i** There are 2 screws located underneath the covers.

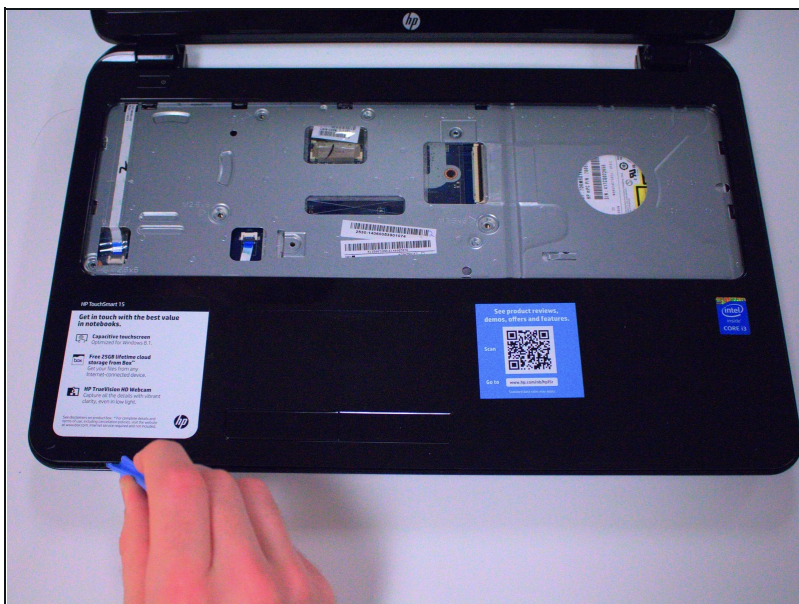


## Step 11



- Flip your laptop over to view top and open it.
  - Remove the four screws and the two wires before removing the base of the laptop.
- ⚠ The metal prongs that wires fit onto stay attached to the computer and can be easily bent when trying to remove or place the plastic piece on to secure the wire. Also pay attention to how the plastic piece looks when you take them off (i.e. which side is up and facing out).

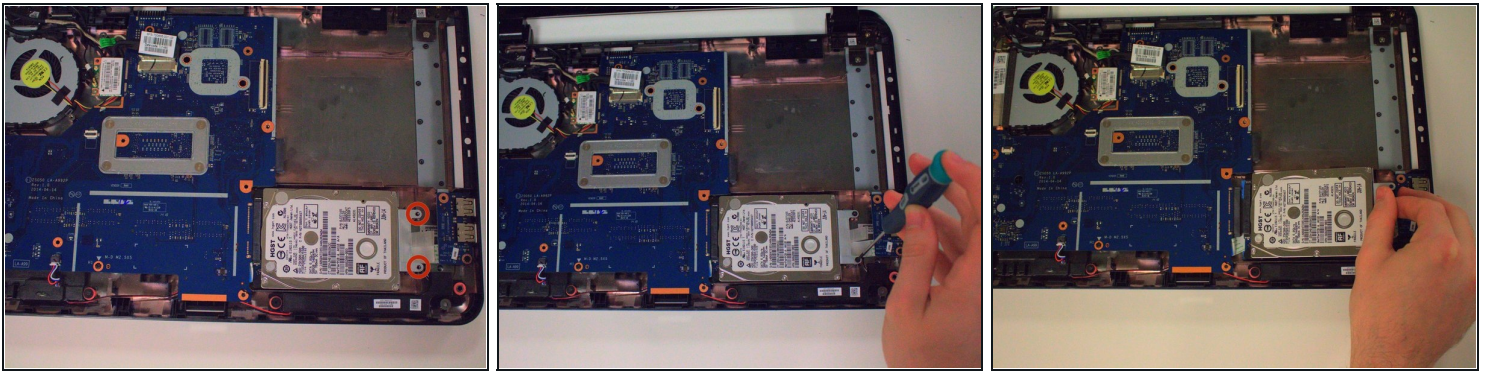
## Step 12



- Use your plastic opening tool to pry the base of the laptop off.



## Step 13



- There are two screws holding the hard drive in place. Remove these screws.
- Remove the hard drive by pulling it to the right like shown.

---

To reassemble your device and complete the hard drive replacement, please follow these instructions in reverse order.