



# How to Replace a Rear Brake Cable

Fix a broken or frayed brake cable on your bike by replacing it with a new one.

Written By: Jacob Valdez



## INTRODUCTION

This tutorial is to show you how to replace the rear brake cable on a Vector Haro bicycle. Keep in mind some parts and layouts may vary based on bike model and year made.



### TOOLS:

- [3/8" Drive Ratchet](#) (1)
- [10mm Socket](#) (1)
- [10mm Wrench](#) (1)
- [10mm Allen Wrench](#) (1)
- [Wire Cutter](#) (1)



### PARTS:

- [Brake cable](#) (1)

## Step 1 — Rear Brake Cable



- Using the smart wrench and socket wrench, remove the nuts that are holding the connector to the old brake line.
- After taking apart the connector, slide the screw off the brake line.
- i The nut may be difficult to remove if it has not been removed for a while.
- ★ Keep in mind the order the parts came off the connector. This will make reassembly easier.

## Step 2



- Remove the cable housing from its holders.
- Slide the housing off the brake cable.



### Step 3



- Remove the second cable housing from its holder.
- Unscrew the other end of the housing from the brake.
- Remove the housing from the cable.

### Step 4



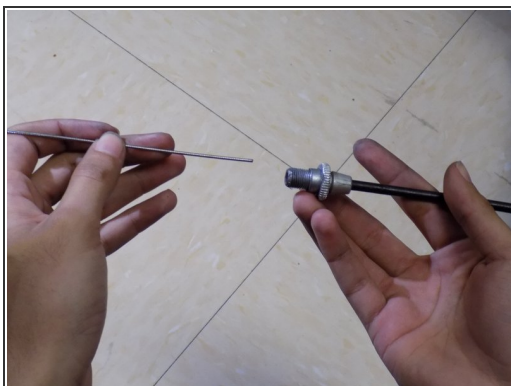
- Apply pressure to the brake to reveal the end of the brake cable.
- Remove the cable from its holder within the brake.
- Pull the remaining cable through the brake.

## Step 5



- Flip your bike to make the brake housing more visible.
- Insert the new brake cable into the brake housing.

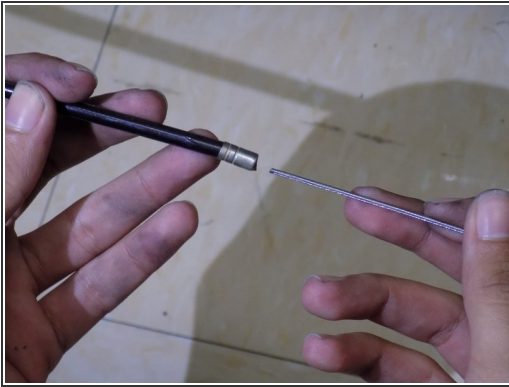
## Step 6



- Slide the cable housing onto the new cable.
- Re-insert the housing back into its holders.

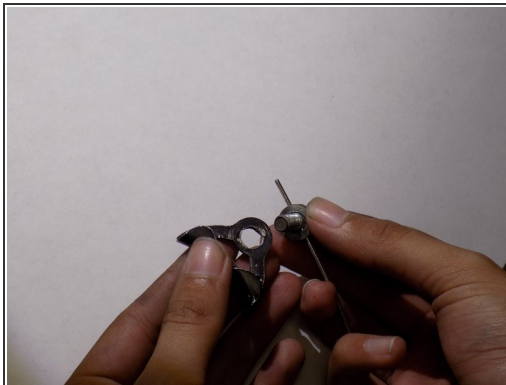
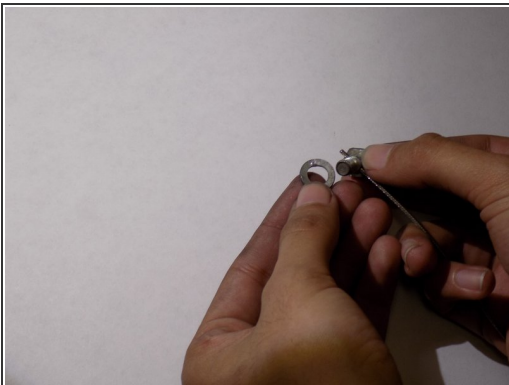


## Step 7



- Slide the rear cable housing onto the new brake cable.
- Re-insert the housing into its holders.

## Step 8



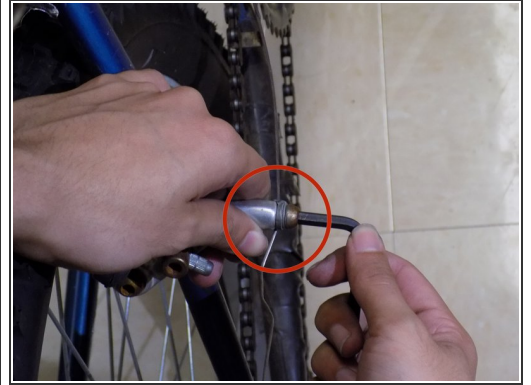
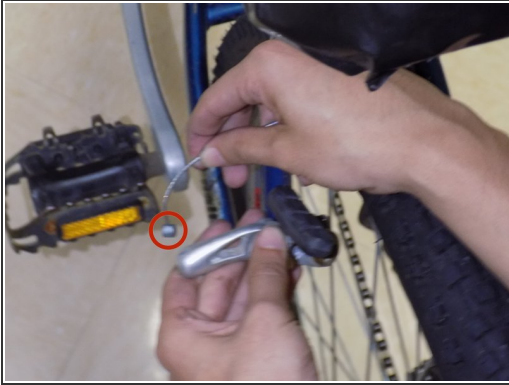
- Slide the screw and washer onto the end of the brake cable.
- Slide the connector of over the screw and tighten the nut and washer on the other end by hand, so it can slide along the brake cable.


## Step 9



- Flip bike back right-side-up.
- Slide the connector up near the housing holder. About an inch between the connector and holder should be fine.
- Using the smart wrench and 10mm socket wrench, tighten the nut so it grips the brake line firmly.
- Using wire-cutters, cut the extra cable so only about an inch remains.

## Step 10



 You can recycle the old brake cable for this.

- Insert the end of the brake cable with a "nub" into the slot on the rear left brake.
- Slide the cable onto the slot on the connector.
- Slide the other end of the cable into the holder on the right rear brake.
- Pull the cable to clamp down the brakes so they almost touch the rim of the wheel.
- Tighten the screw so the cable does not come loose.

You now should have a fully function rear brake on your bike.