



Motorola RAZR Maxx HD Screen Replacement

This guide involves the removal of various...

Written By: Enrique



INTRODUCTION

This guide involves the removal of various small screws and parts so make sure you are in a clean and organized environment to avoid the loss of any components.

TOOLS:

Paper Clip (1)

Spudger (1)

T3 Torx Screwdriver (1)

T5 Torx Screwdriver (1)

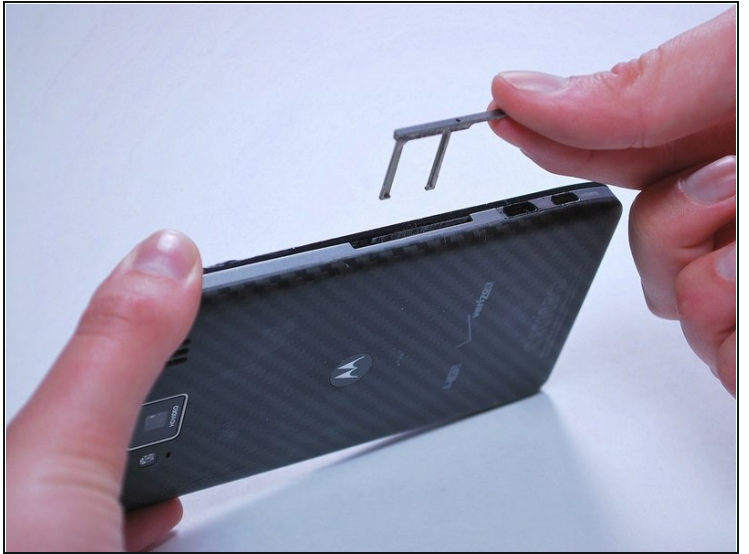
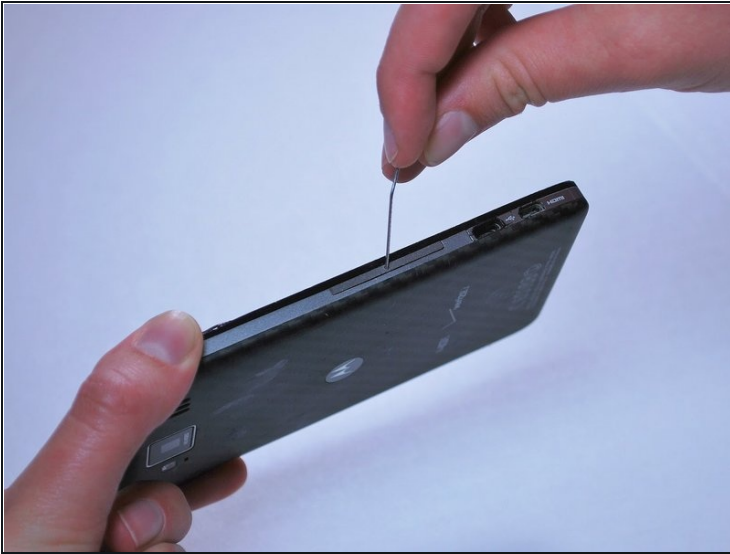
Tweezers (1)

Step 1 — Screen Removal



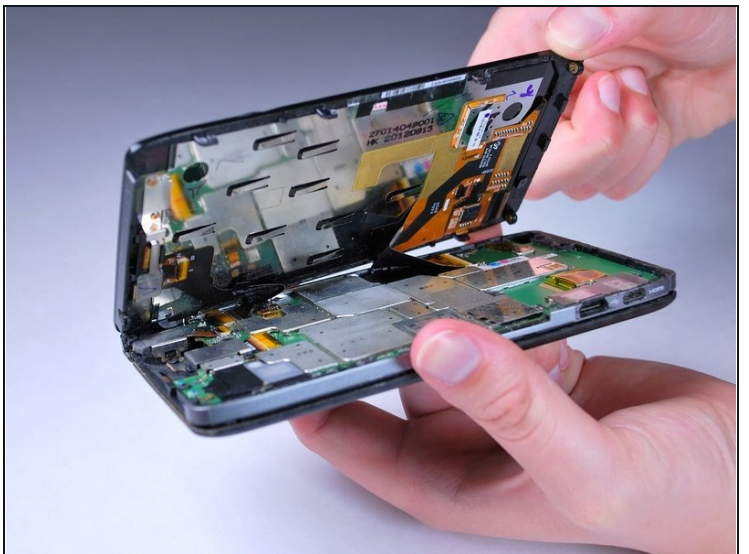
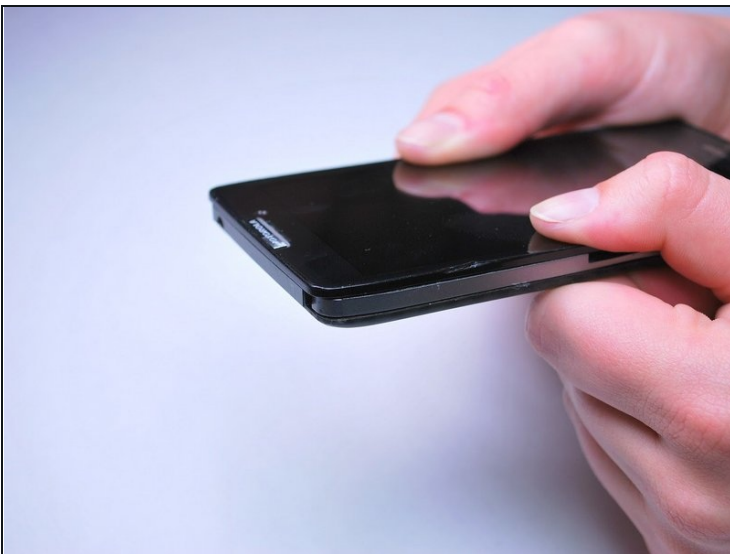
- Use the Torx T5 Screwdriver to remove two 5.0 mm screws at the bottom of the phone.

Step 2



- To remove the SIM card, use an unfolded paperclip to press down on the metal plate on the left side of the phone until it pops up.

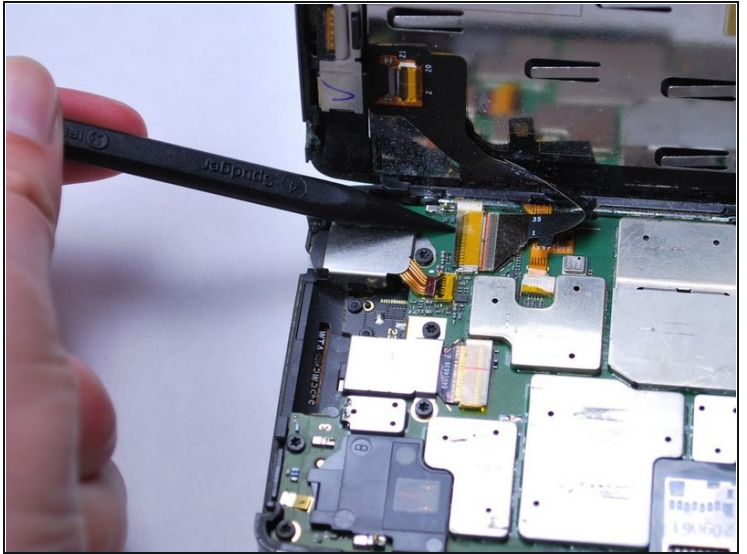
Step 3



- Gently push the screen toward the top edge of the phone and tilt the screen to reveal the black flex cables.

⚠ Do NOT remove the screen all the way or the flex cables will be damaged.

Step 4



- Release the two black ribbon flex cables by gently pulling up on the connection using the spudger. Then lift the screen to remove.

⚠ Make sure to remove the flex cables before completely removing the screen.

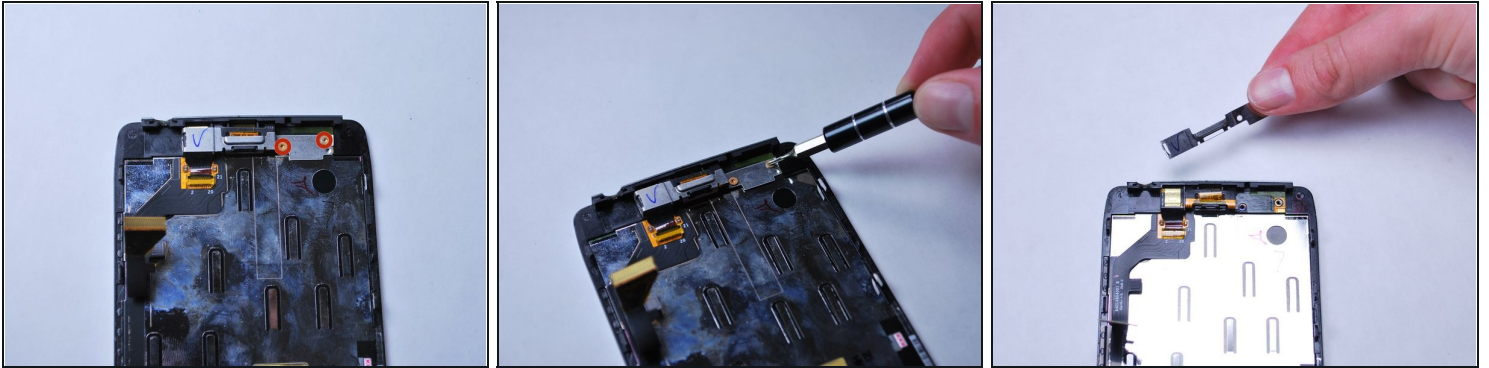
- ① When reassembling, align the white bands on the edge of the screen so that a connection is made.

Step 5 — Front-Facing Camera



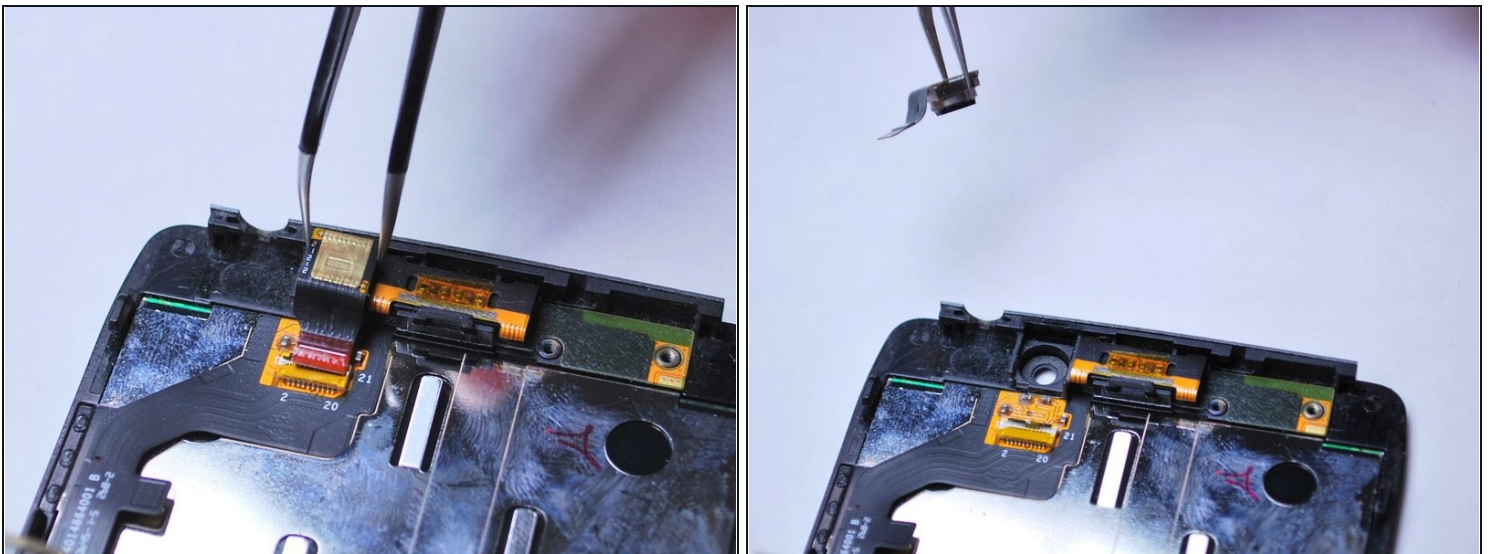
- On the back of the LCD display, release the yellow front-facing camera ribbon cable by gently lifting upward on the black retaining clip with the spudger.

Step 6



- With a Torx T3 screwdriver, unscrew the two 2.0 mm screws on front-facing camera mounting bracket. Then lift to remove it.

Step 7



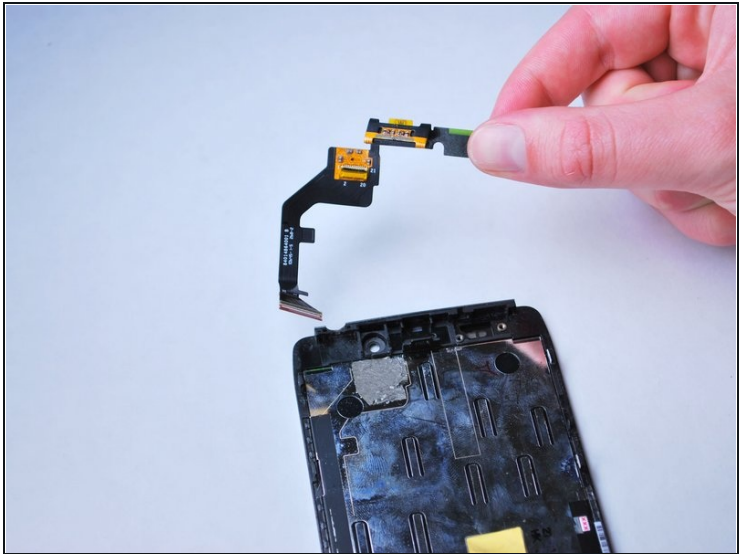
- Use [tweezers](#) to remove the front-facing camera by lifting it from the LCD display frame.

Step 8 — Earpiece Speaker



- Insert the spudger between the speaker and retaining clip and gently pry upward to release the earpiece speaker.

Step 9



- Using a spudger, gently pry up on the lower right edge of the black earpiece speaker ribbon cable, attached to the screen, to release it from the LCD display.

To reassemble your device, follow these instructions in reverse order.