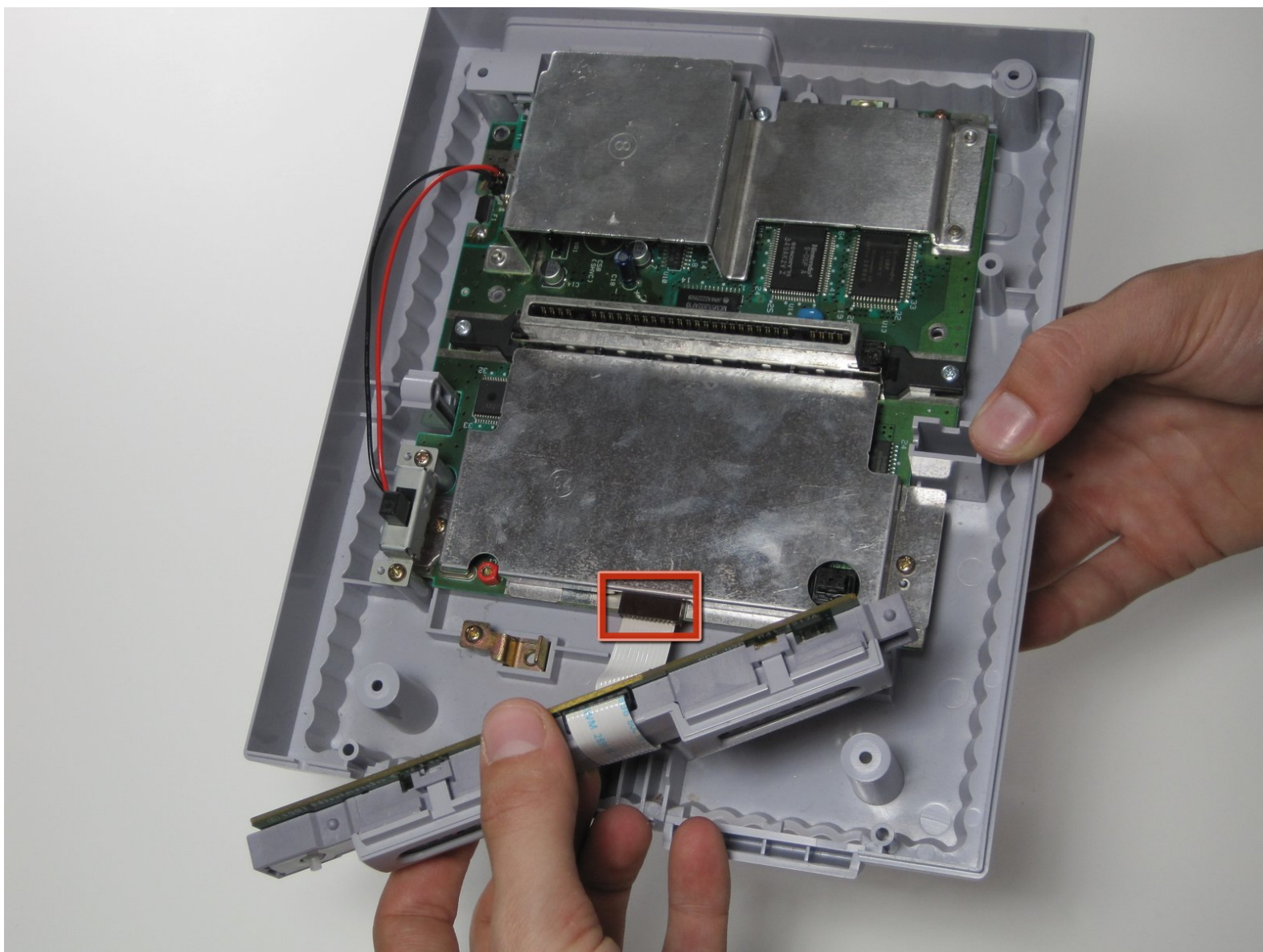




Super Nintendo Controller Port Replacement

Replace both broken controller ports in you Super Nintendo to allow user input.

Written By: James Shirley



INTRODUCTION

This guide will have you remove the upper case using a gamebit screwdriver and then in order to reveal the ribbon to the system from the controller port you will have to remove the reset button. This process will require only the gamebit.



TOOLS:

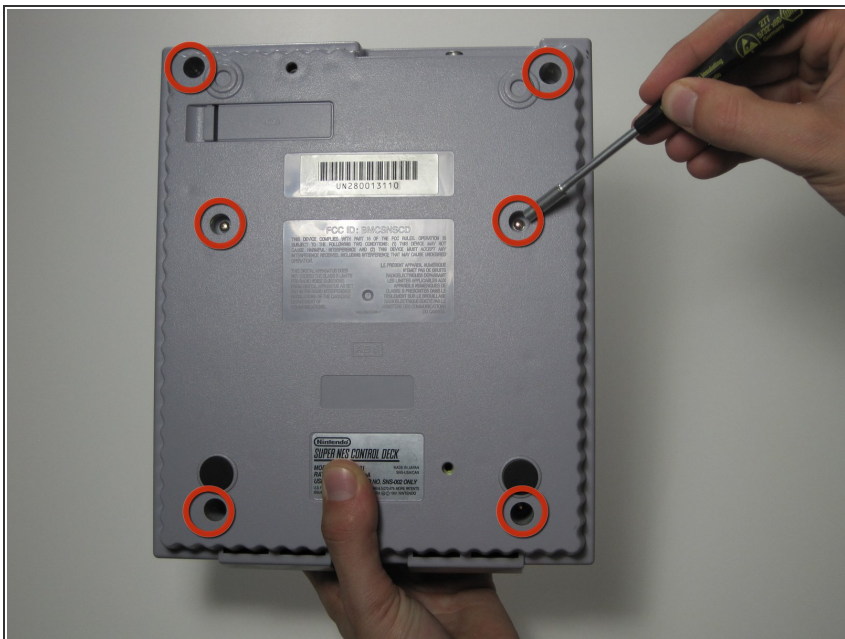
- [Gamebit 4.5mm](#) (1)



PARTS:

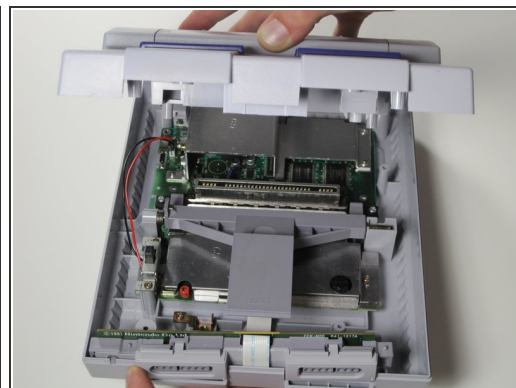
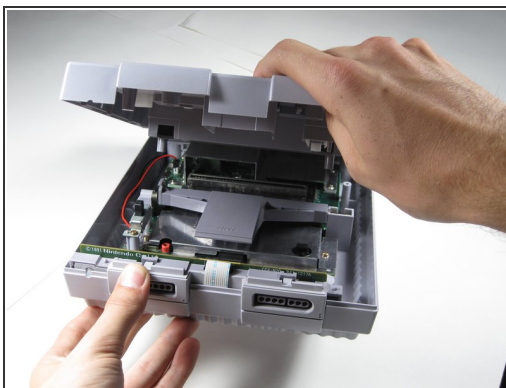
- [SNES Controller Ports](#) (1)

Step 1 — Outer Case



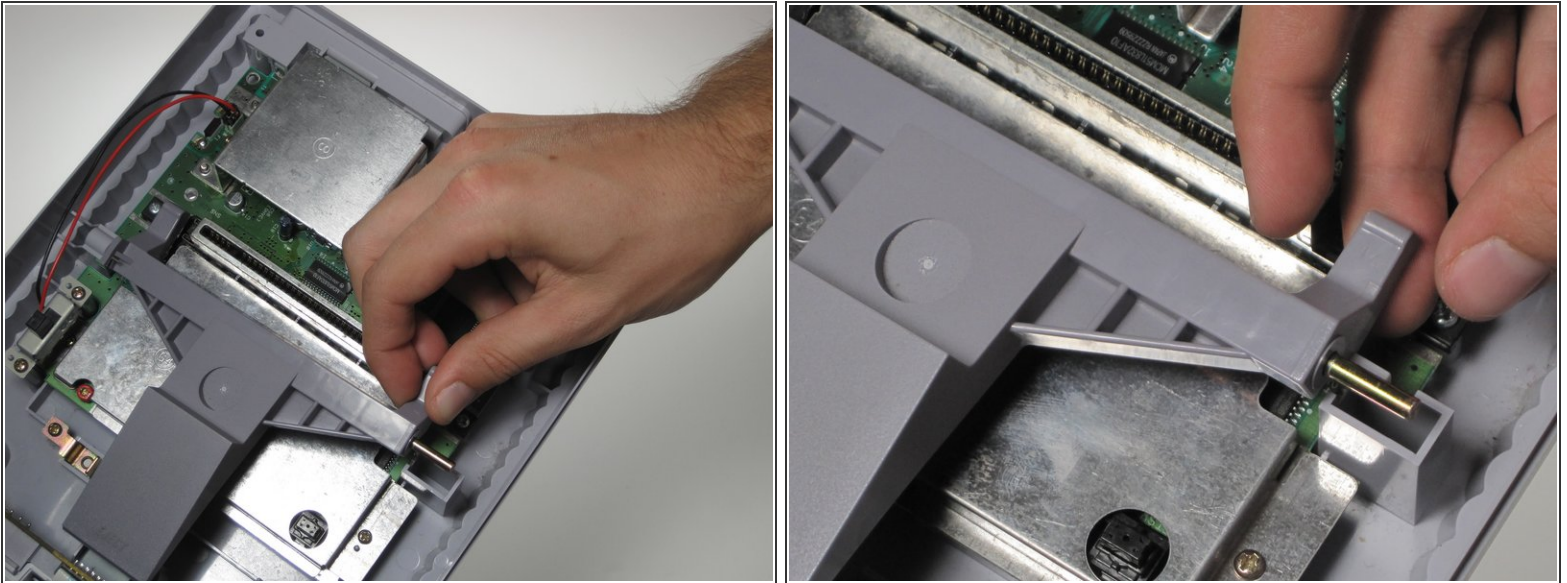
- Remove the six screws located on the underside of the system using the Gamebit 4.5mm screwdriver.

Step 2



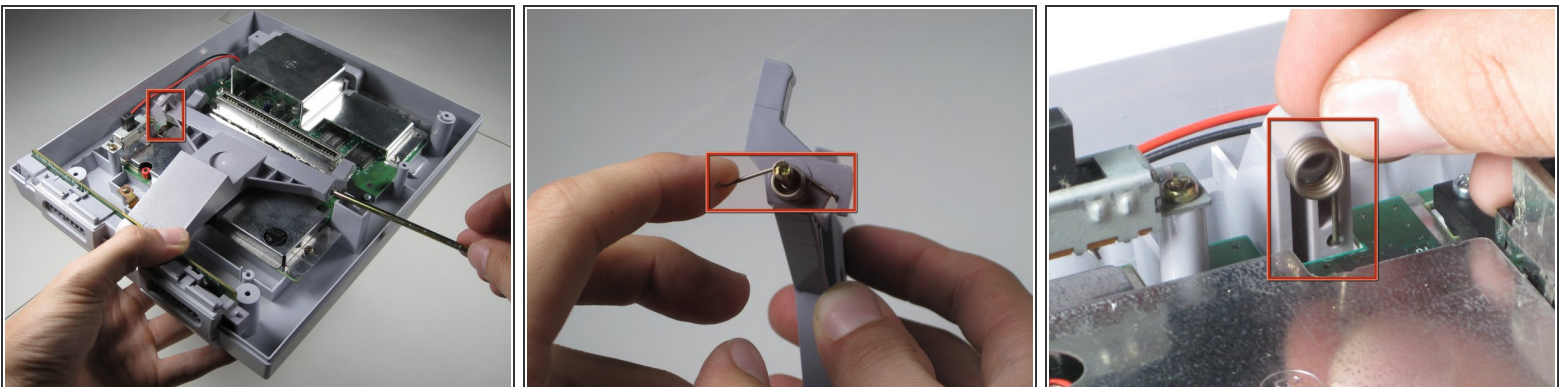
- Carefully flip the unit back over.
- Locate the seam. Lift and separate the upper half of the case from the lower half of the case.

Step 3 — Eject Button



- Lift the right side of the eject lever out of the housing.

Step 4

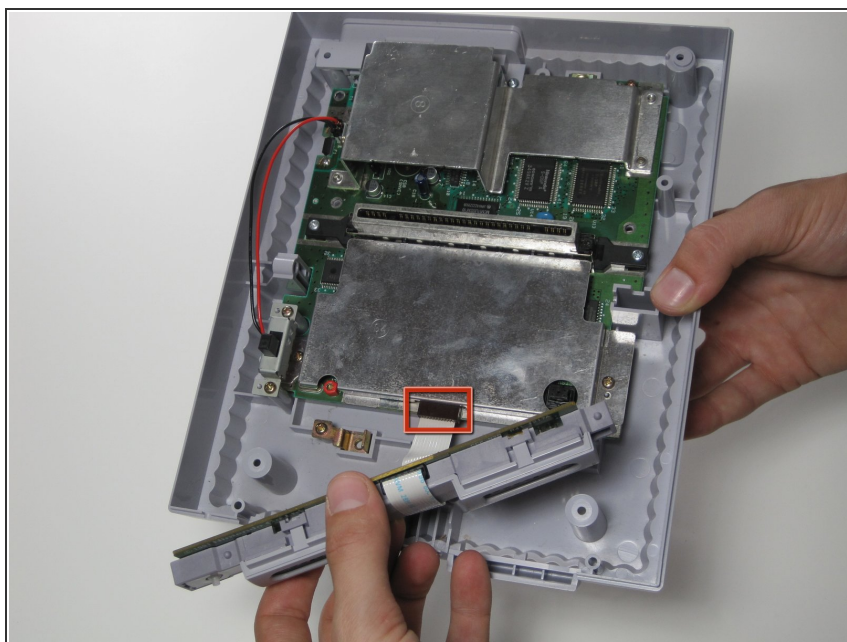


- Pull the metal bar out through the right side of the eject lever.

⚠ Make sure to keep track of the spring located on the left side of the lever as it may shoot off when removing the metal bar.

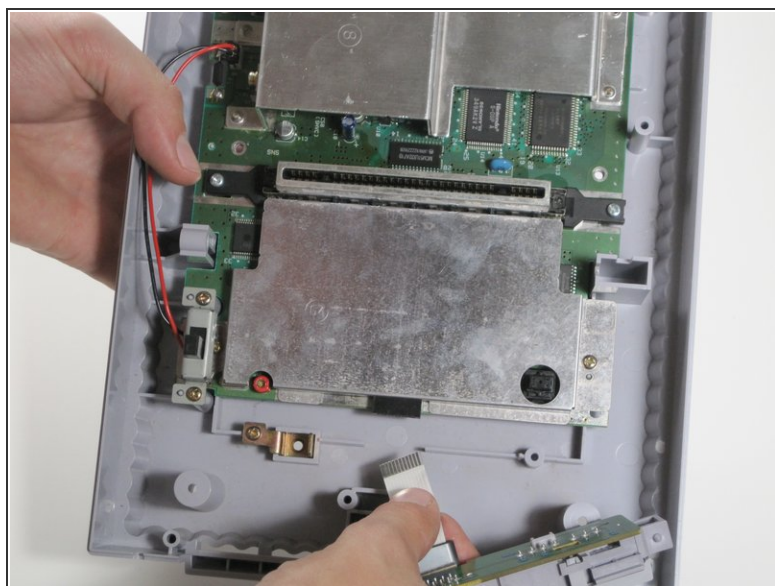
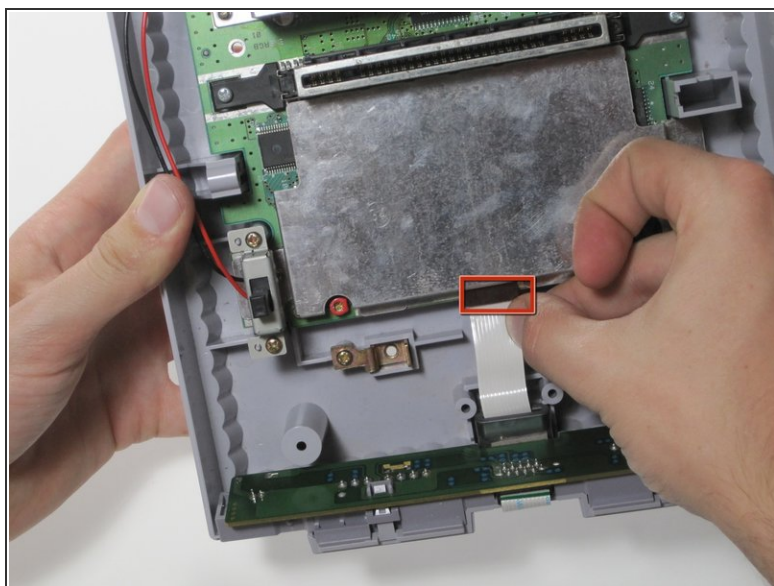
i When reassembling, the procedure becomes more difficult due to the spring (marked red). We recommend that one person hold the spring in place (picture 3) while another person slides the metal bar back into the left housing, and slide the eject lever onto the metal bar.

Step 5 — Controller Port



- Lift the controller ports out of the housing, this should be done without much force. Take note of the location of the ribbon cable connection.

Step 6



- Carefully remove the ribbon cable from its port.

To reassemble your device, follow these instructions in reverse order.