



Toshiba Satellite A75-S226 Display Assembly Replacement

Replace an old Toshiba Satellite A75-S226 Display Assembly with a new assembly.

Written By: Garrett Gudgel



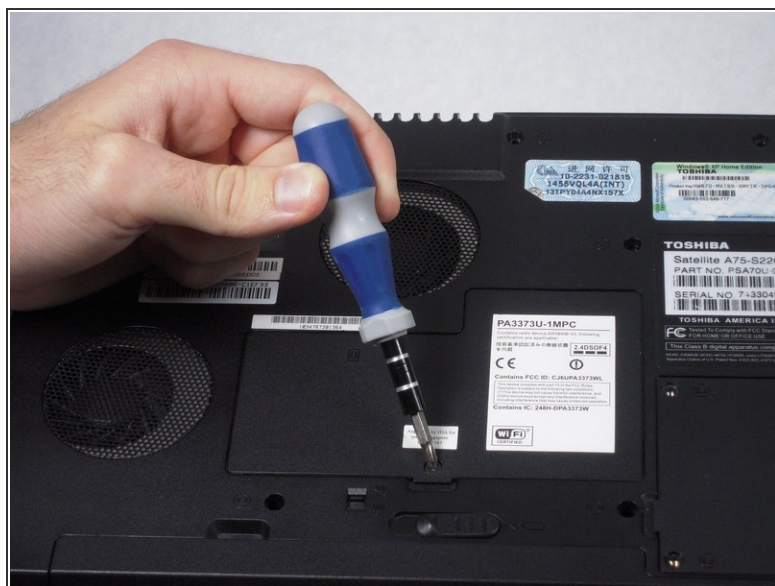
INTRODUCTION

This guide may be useful for fixing dead pixels, cracked screens, and other problems with the display. You will need the iFixit plastic opening tool, a Phillips #1 screw driver, and your new Toshiba Satellite A75-S226 Display Assembly.

TOOLS:

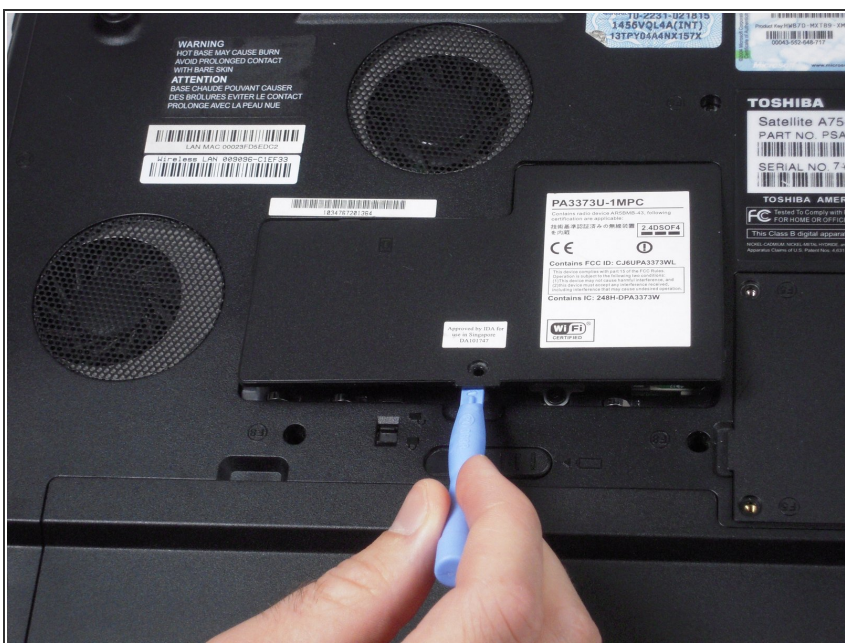
- [Phillips #00 Screwdriver](#) (1)
 - [iFixit Opening Tools](#) (1)
 - [Phillips #1 Screwdriver](#) (1)
-

Step 1 — Wi-Fi/Memory Cover



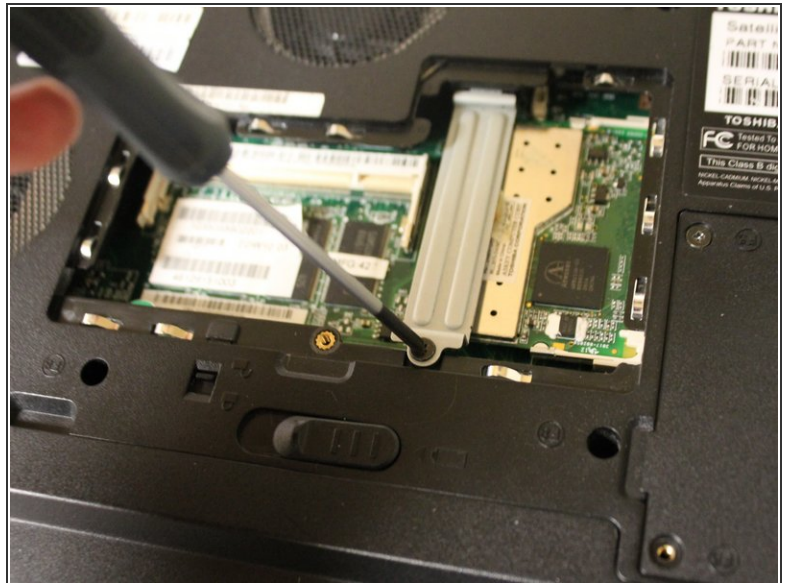
- Remove the 5.75 mm screw from the cover panel.
- ⓘ Turn the laptop over with the screen facing down.

Step 2



- Lift up the cover panel using a plastic opening tool.

Step 3 — Wi-Fi Card



- Remove the 5.64 mm screw from the bottom of the crossing bar.
- Remove the crossing bar.

Step 4



- Use a plastic opening tool to disconnect the black and white antenna cable's connectors from the Wi-Fi card.
- ⓘ Note that the black wire is connected to the port that is labeled main.

This document was generated on 2020-11-27 04:22:30 AM (MST).

Step 5



- Use fingers to push the clips away from memory card.

Step 6



- Use fingers to remove the Wi-Fi card.

Step 7 — Keyboard



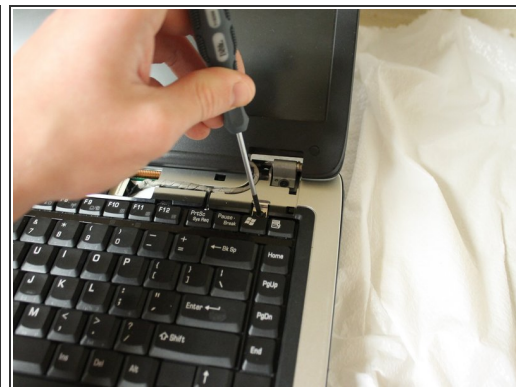
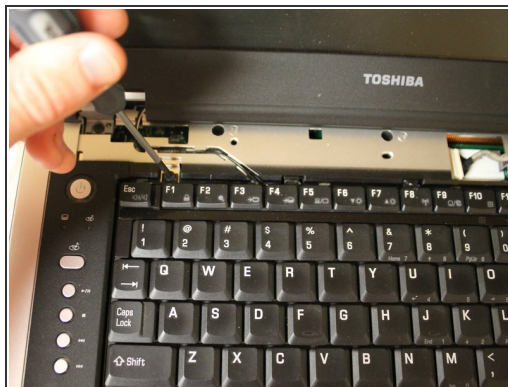
- Use the plastic opening tool to lift up the top panel all the way along the keyboard until it loosens.
- ⓘ It may be helpful to first pry at the rear of the hinge covers (not shown) to release them. Then Insert the plastic opening tool underneath the top panel's sides and then front edge.

Step 8



- Remove the top panel by popping the panel out the top left socket, then do the same with the right side.

Step 9



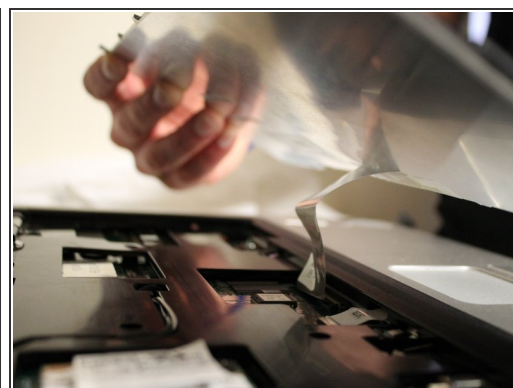
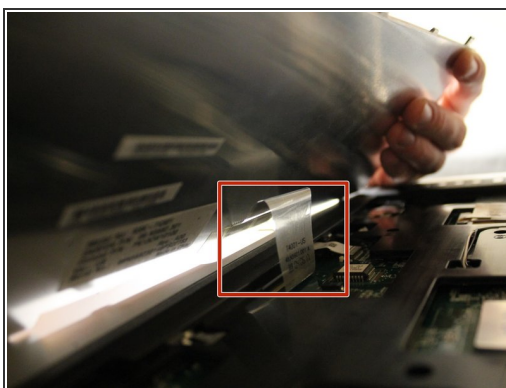
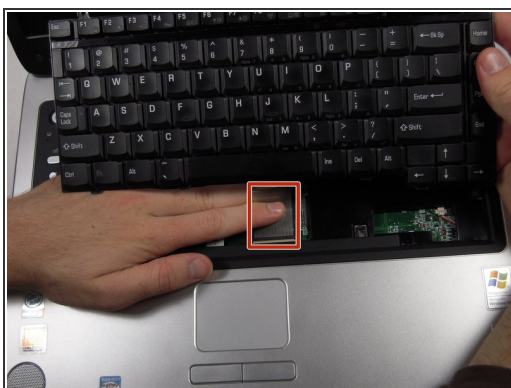
- Remove the two 3.67 mm screws from the top corners of the keyboard.

Step 10



- Use fingers to lift up the keyboard from the top.
- ⚠ Do not try to remove the keyboard completely because it is still attached to the motherboard.

Step 11



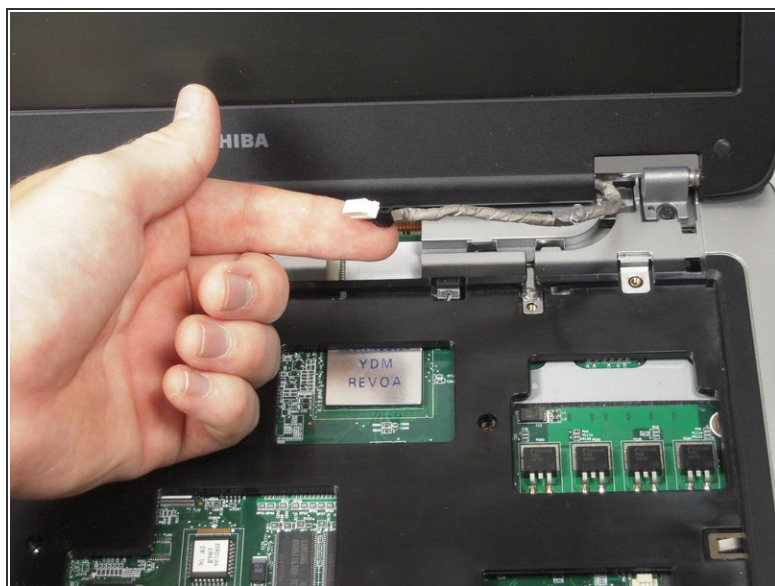
- Remove the cable connecting the keyboard with the motherboard.
- ⚠ Be aware of the locking tabs on each side of the ribbon-cable connector—they slide back about 2mm to free the cable.
- Lift up and remove the keyboard.

Step 12 — Display Assembly



- Remove the 3.76mm screw from the ground wire.

Step 13



- Use the plastic opening tool to remove the wire.

Step 14



- Gently pull the black and white wires out of the upper case.

⚠ Do not pull the wire too much, or you can damage the wire.

Step 15



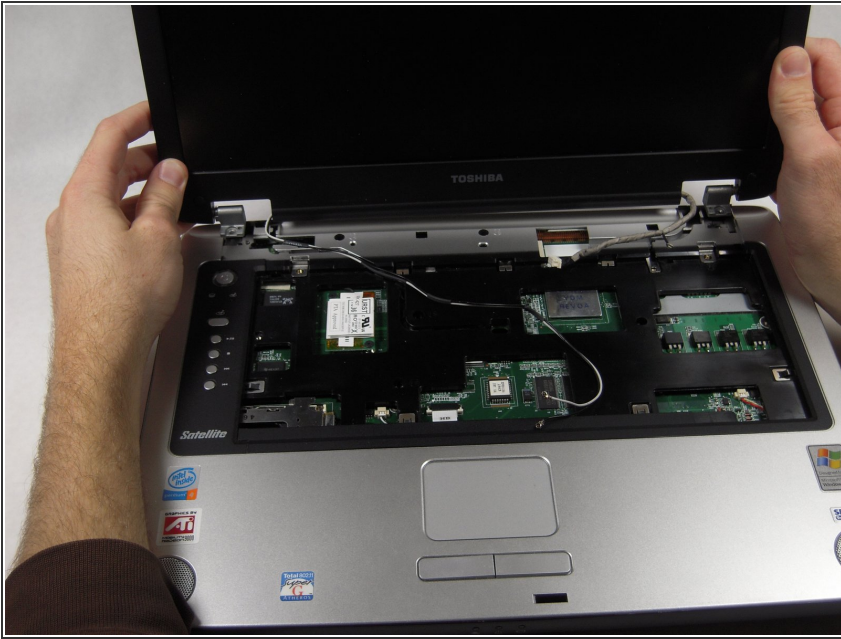
- Remove the 8.6 mm screw on left side of upper case.

Step 16



- Remove two 8.6 mm screws on the back corners of the laptop.

Step 17



- Lift up the display assembly to remove it.

Replace the old display assembly with your new assembly. To reassemble your device, follow these instructions in reverse order.