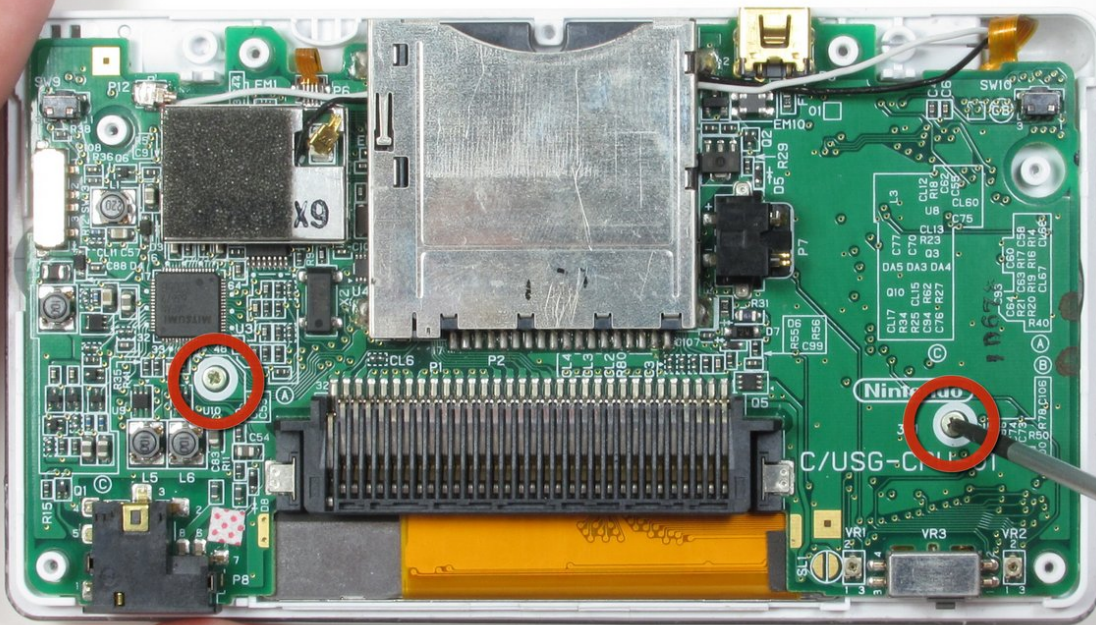




# Removing Nintendo DS Lite Logic Board Screws

This guide has been updated by iFixit staff!...

Written By: bushing



---

## INTRODUCTION

**This guide has been updated by iFixit staff! Read the new, official guide [here](#).**

This guide will show you how to remove the screws that hold the Logic Board into place. From here, some repairs may be done that require you disconnect all connected modules, and some may not require that you disturb the connections.

---

### TOOLS:

- [Phillips #00 Screwdriver](#) (1)
-

## Step 1 — Nintendo DS Lite Battery Disconnect



- Place your device upside down and locate the battery compartment.
- Find the Phillips head screw securing the battery cover in the bottom right hand corner of the device.
- ✦ Loosen the screw enough to remove the battery cover but leave the screw in the cover for reassembly.
- ⓘ Use only a Phillips screwdriver to remove screw.

## Step 2



- Slowly remove the battery cover with the iFixit opening tool.
- ⚠ Make sure to remove the cover carefully to keep from losing Phillips screw in the cover. It will be needed for reassembly.



## Step 3



- Use the iFixit opening tool to carefully pry the battery out of the case.
- After the old battery is removed replace it with a new battery facing the same direction as when the cover was opened.
- ① For some devices, you may be able to remove the battery by flipping the DS over and letting the battery fall into your hand.

## Step 4 — Disassembling Nintendo DS Lite Bottom Case



- Remove the following seven screws that secure the lower case to the DS Lite:
  - Three silver tri-wing screws (5mm long)
  - One black tri-wing screw (4mm)
  - Two gold Phillips screws (4mm)
  - One silver Phillips screw (3mm)
- **Do not** remove the silver PH screw (3mm) in the battery compartment yet. It holds the main PCB in place.

## Step 5



- On the front edge of the Nintendo DS between the headphone jack plug and volume controls remove the plastic insert (or cartridge) from the lower slot (Slot 2).

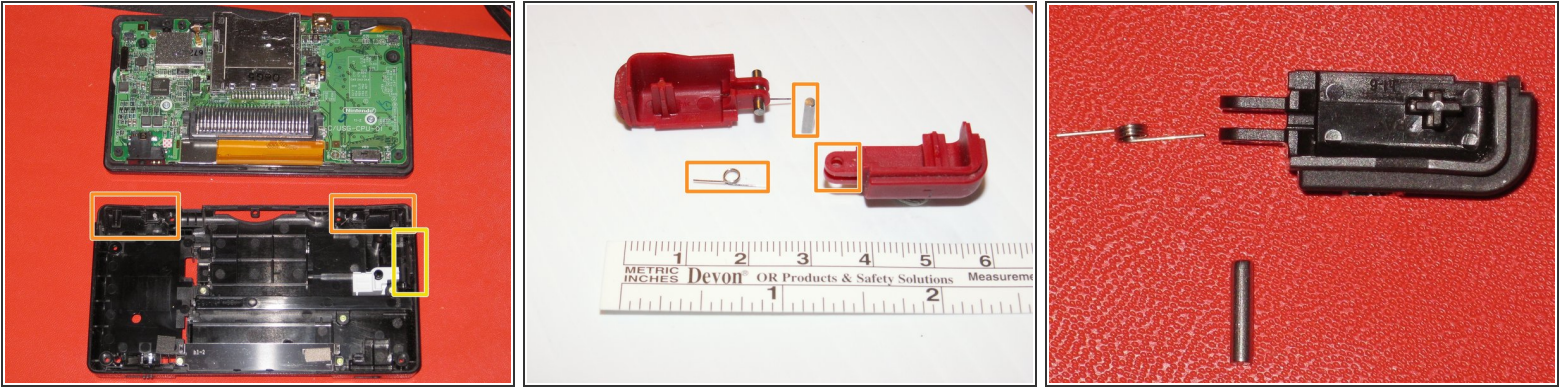
## Step 6



- Flip the unit over so that it is facing right-side up.
- Use a spudger to pry open the gap between the bottom case and the front panel. Work all the way around the case until the panel is free.
- Avoid touching the L and R shoulder buttons, because they easily detach and are difficult to reassemble. Keep the bottom case flat against your workbench to help hold the shoulder buttons in place.

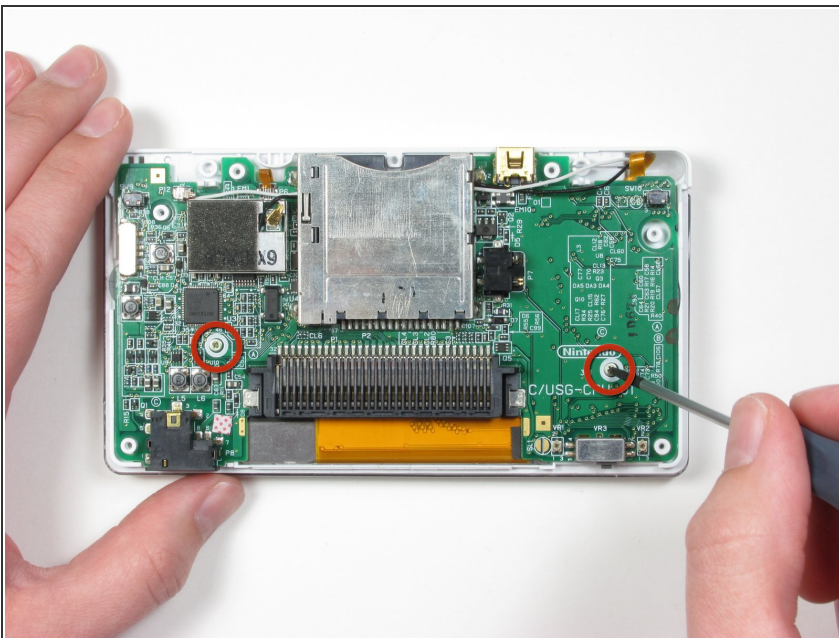


## Step 7



- Carefully separate the two pieces by hand.
  - The two shoulder buttons are made up of three pieces -- the plastic button, a pin, and a spring. If they accidentally pop out while you are working, study the picture and make sure you put the spring in the correct position.
- ☑ When reassembling the cover, make sure that the power switch caver on the bottom case is in the off (down) position to avoid breakage.

## Step 8 — Removing Nintendo DS Lite Logic Board Screws



- After taking the bottom case off, remove two Phillips #00 screws that secure the logic board to the plastic case.



To reassemble your device, follow these instructions in reverse order.