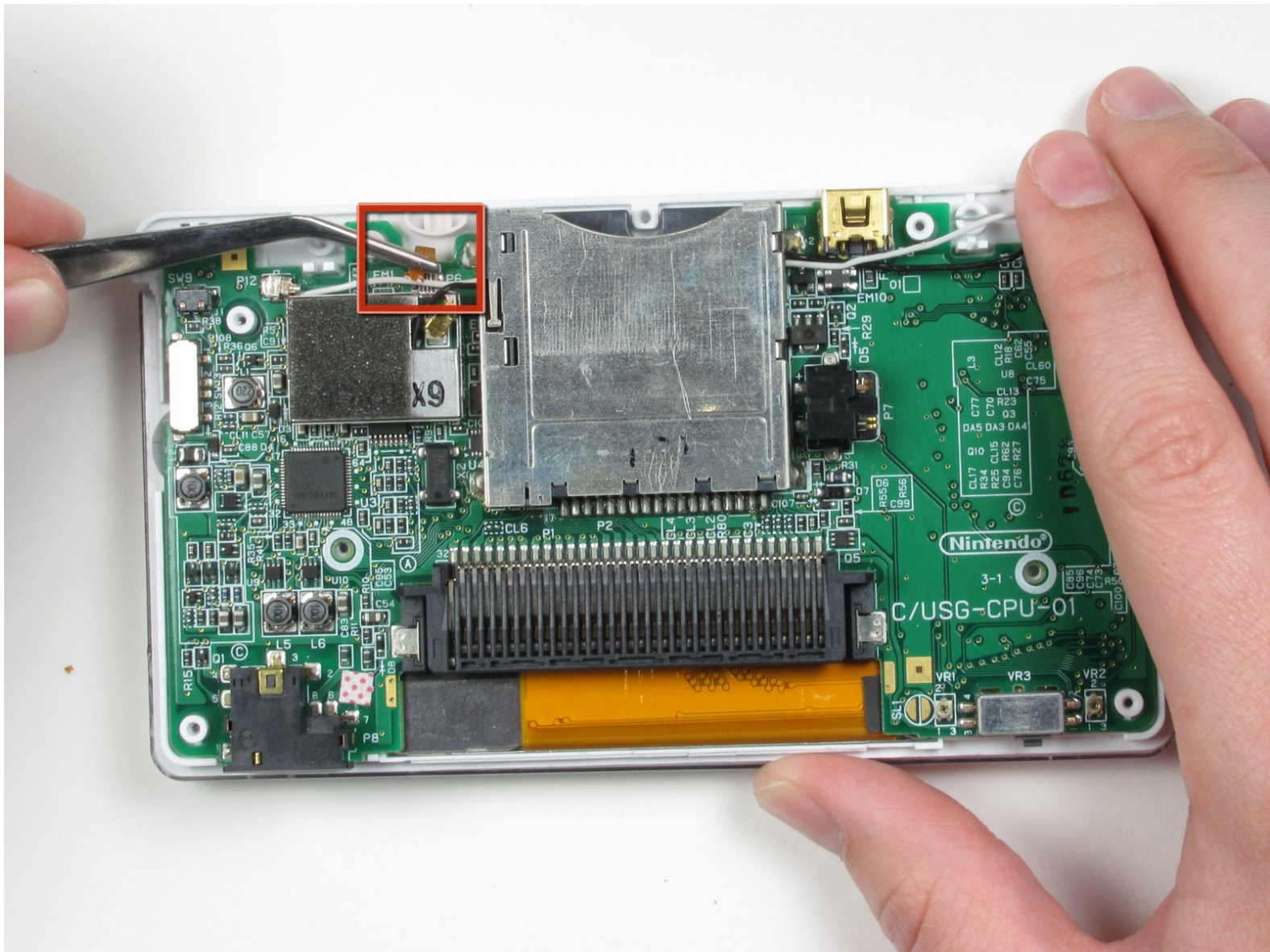




Disconnecting Nintendo DS Lite Logic Board

This guide has been updated by iFixit staff!...

Written By: bushing



INTRODUCTION

This guide has been updated by iFixit staff! Read the new, official guide [here](#).

In this guide, we will carefully disconnect all the connections from the logic board to assorted peripherals.

TOOLS:

- [Tweezers](#) (1)
-

Step 1 — Nintendo DS Lite Battery Disconnect



- Place your device upside down and locate the battery compartment.
- Find the Phillips head screw securing the battery cover in the bottom right hand corner of the device.
- ✦ Loosen the screw enough to remove the battery cover but leave the screw in the cover for reassembly.
- ⓘ Use only a Phillips screwdriver to remove screw.

Step 2



- Slowly remove the battery cover with the iFixit opening tool.
- ⚠ Make sure to remove the cover carefully to keep from losing Phillips screw in the cover. It will be needed for reassembly.

Step 3



- Use the iFixit opening tool to carefully pry the battery out of the case.
- After the old battery is removed replace it with a new battery facing the same direction as when the cover was opened.
- ① For some devices, you may be able to remove the battery by flipping the DS over and letting the battery fall into your hand.

Step 4 — Disassembling Nintendo DS Lite Bottom Case



- Remove the following seven screws that secure the lower case to the DS Lite:
 - Three silver tri-wing screws (5mm long)
 - One black tri-wing screw (4mm)
 - Two gold Phillips screws (4mm)
 - One silver Phillips screw (3mm)
- **Do not** remove the silver PH screw (3mm) in the battery compartment yet. It holds the main PCB in place.

Step 5



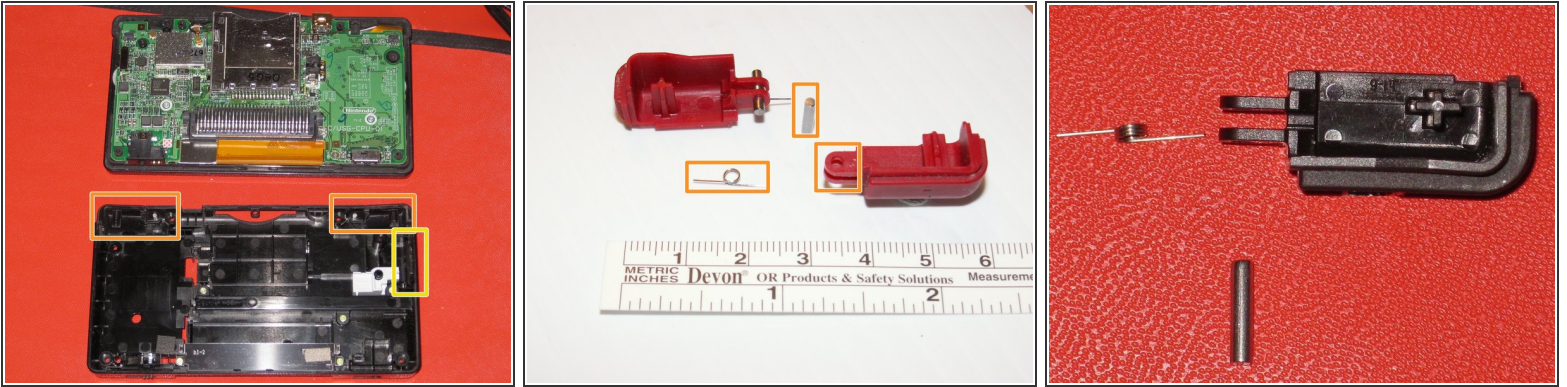
- On the front edge of the Nintendo DS between the headphone jack plug and volume controls remove the plastic insert (or cartridge) from the lower slot (Slot 2).

Step 6



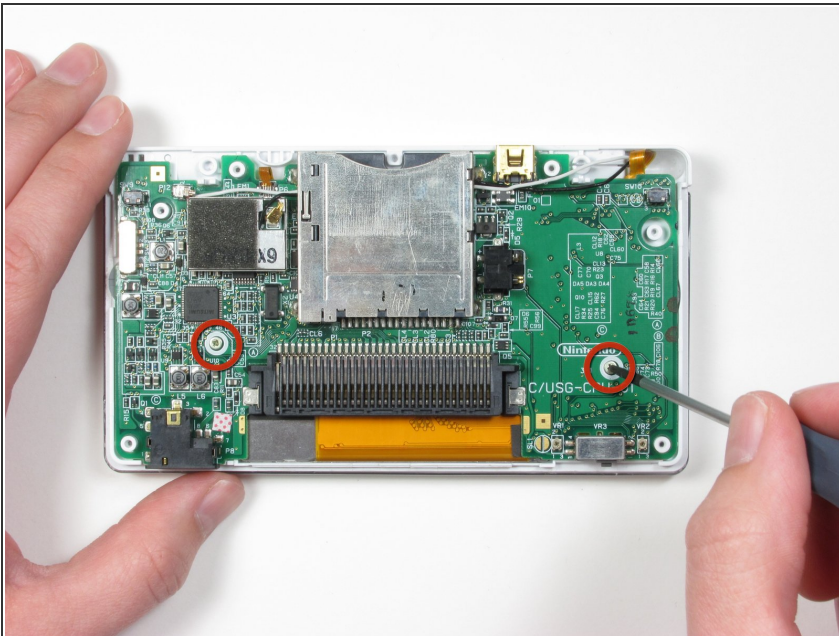
- Flip the unit over so that it is facing right-side up.
- Use a spudger to pry open the gap between the bottom case and the front panel. Work all the way around the case until the panel is free.
- Avoid touching the L and R shoulder buttons, because they easily detach and are difficult to reassemble. Keep the bottom case flat against your workbench to help hold the shoulder buttons in place.

Step 7



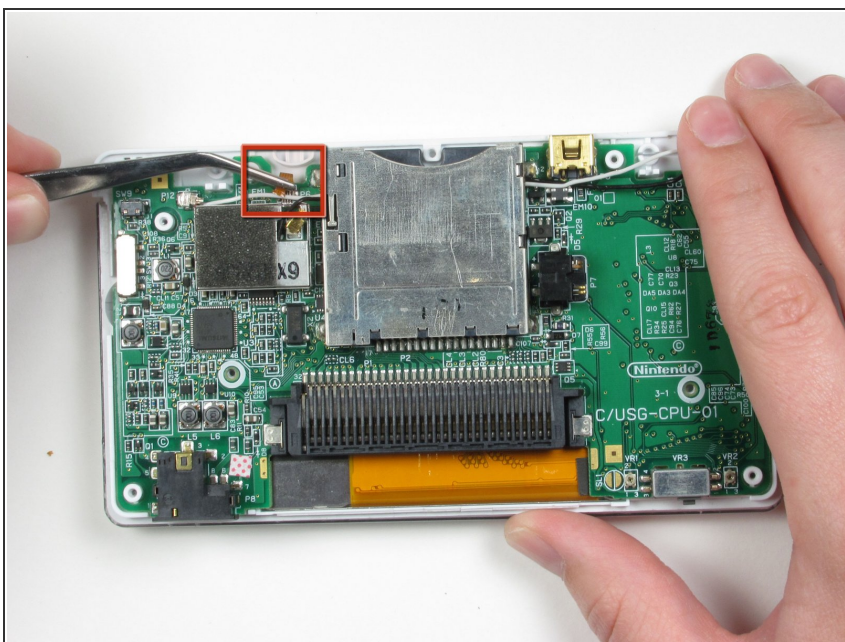
- Carefully separate the two pieces by hand.
- The two shoulder buttons are made up of three pieces -- the plastic button, a pin, and a spring. If they accidentally pop out while you are working, study the picture and make sure you put the spring in the correct position.
- ☑ When reassembling the cover, make sure that the power switch caver on the bottom case is in the off (down) position to avoid breakage.

Step 8 — Removing Nintendo DS Lite Logic Board Screws



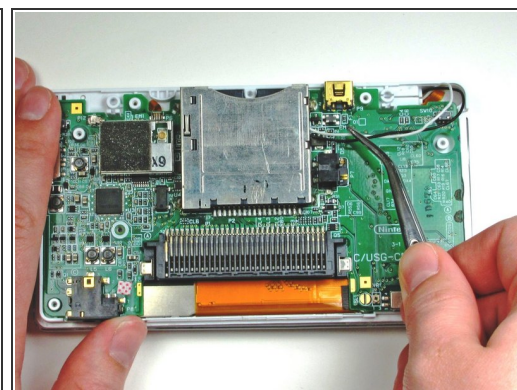
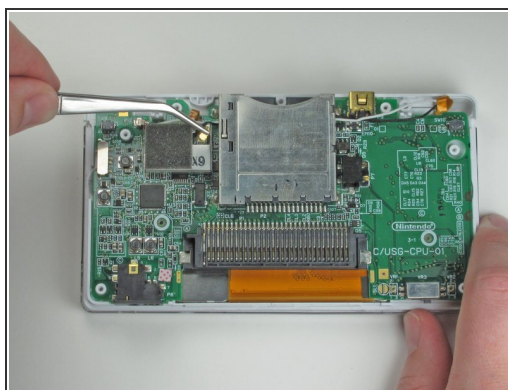
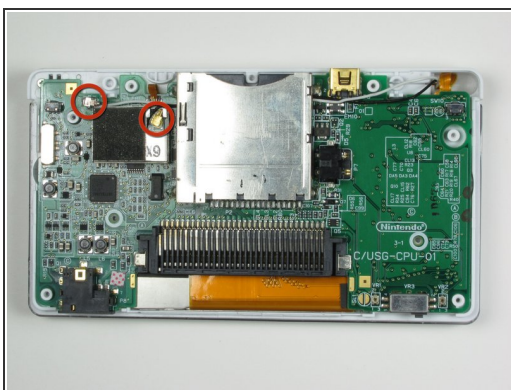
- After taking the bottom case off, remove two Phillips #00 screws that secure the logic board to the plastic case.

Step 9 — Disconnecting Nintendo DS Lite Logic Board



- Locate the small ribbon cable that connects the touch screen to the logic board.
- Using a pair of tweezers, flip the black plastic latch up to release the cable.
- Gently pull the cable straight out (towards the edge of the case).

Step 10



- Locate the black and white cables that are attached to the logic board and WiFi module.
- Using metal tweezers, gently disconnect the wires by pulling them away from the logic board and underneath the card slot.

⚠ Do not pull the wires with force; they will detach.

To reassemble your device, follow these instructions in reverse order.