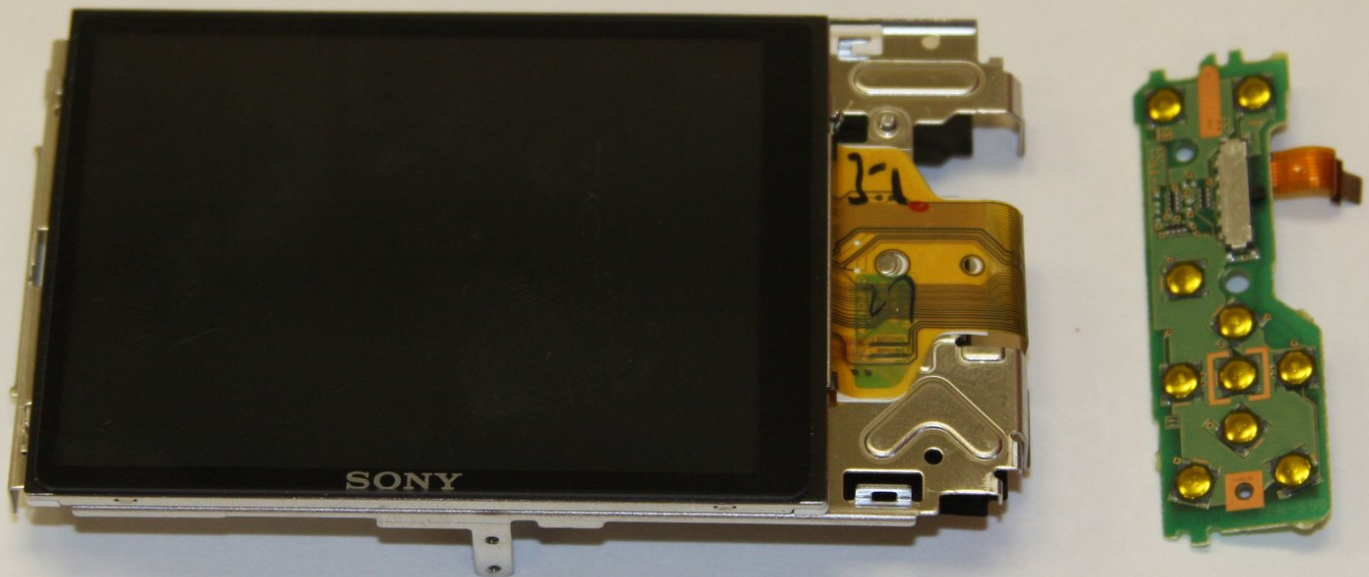




# Sony Cyber-shot DSC-W690 Navigation Buttons Circuit board Replacement

This guide will show you how to remove and install new buttons.

Written By: Will Norris

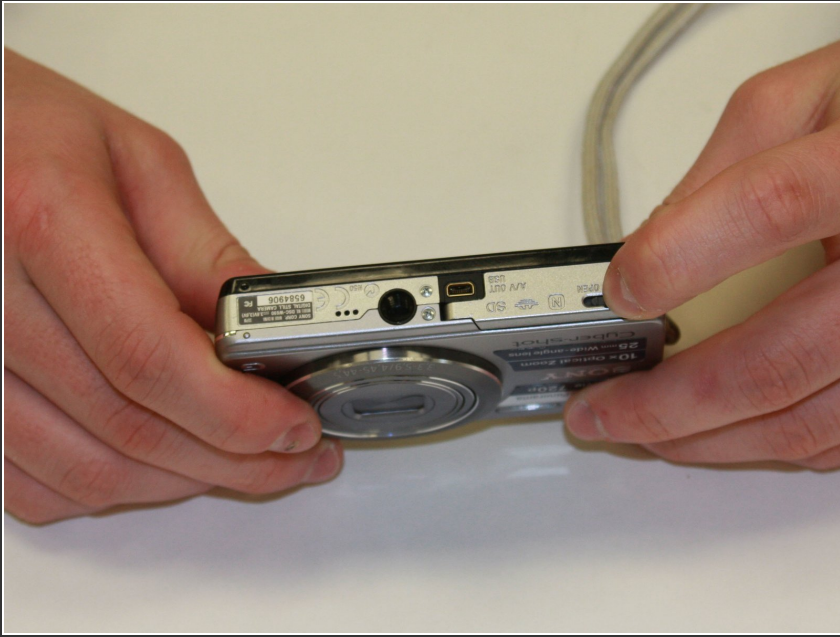




## TOOLS:

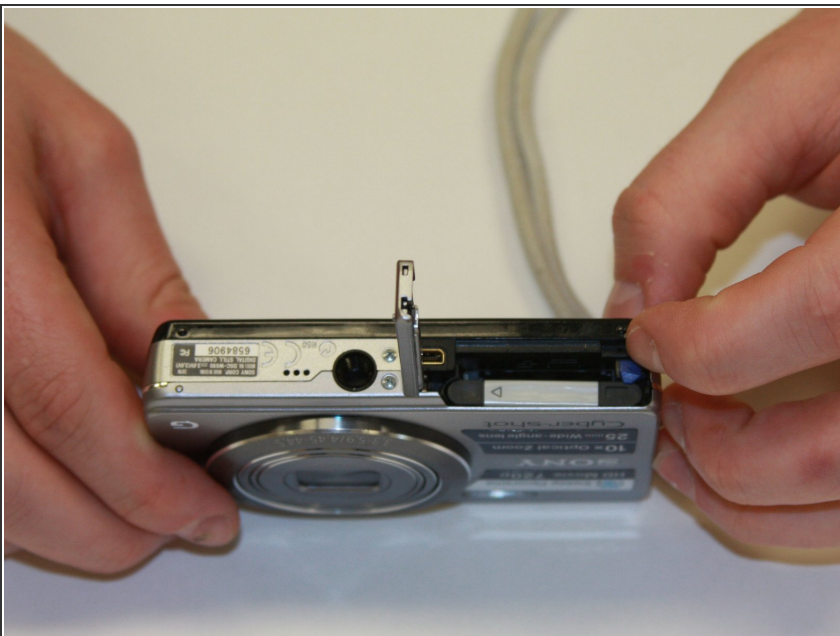
- [Phillips #00 Screwdriver](#) (1)
- [Spudger](#) (1)

## Step 1 — Battery



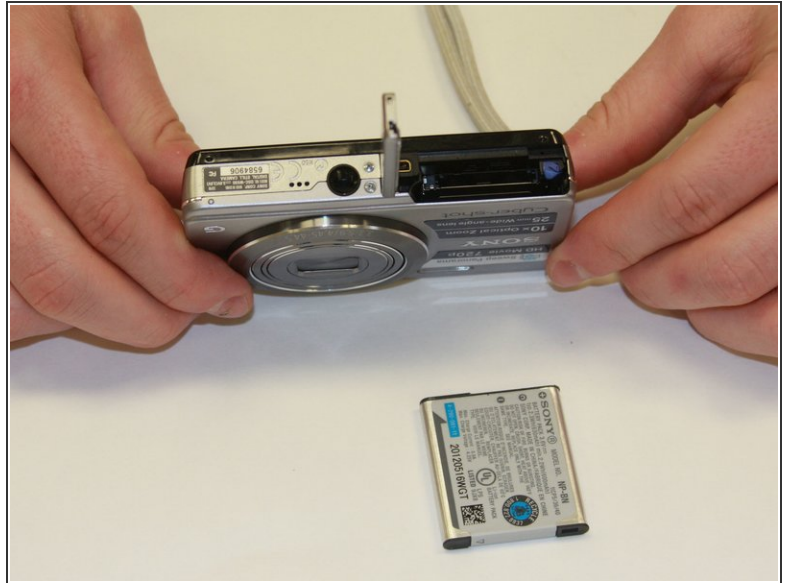
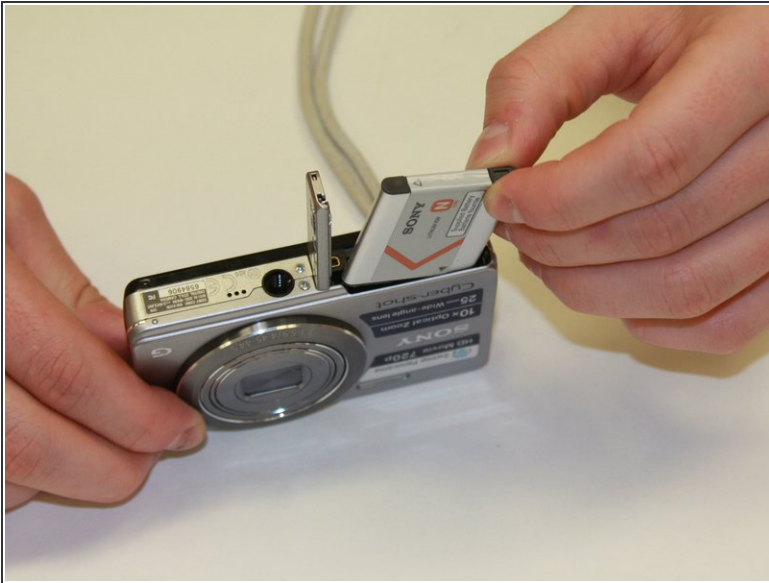
- Open the battery door.

## Step 2



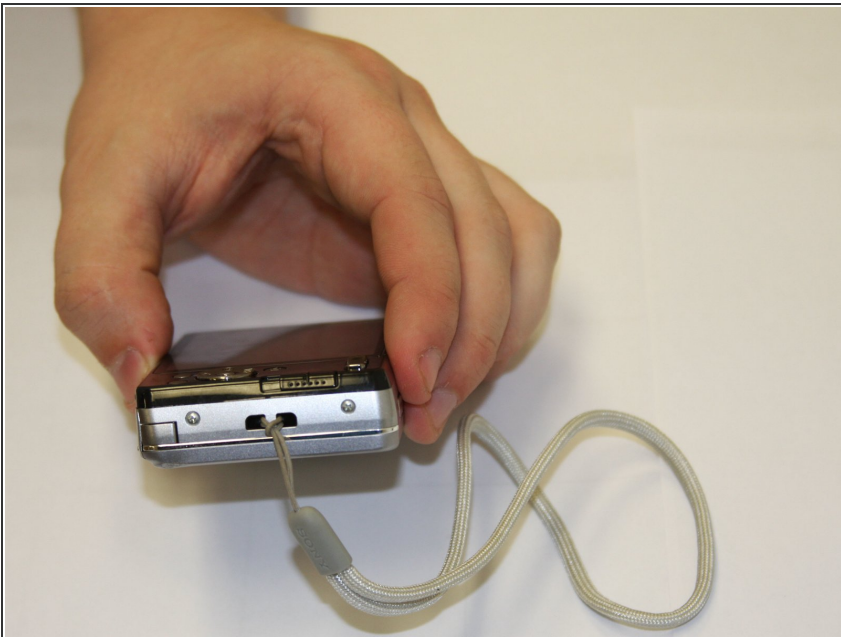
- Open the battery lock to release the battery.

## Step 3



- Remove the battery.

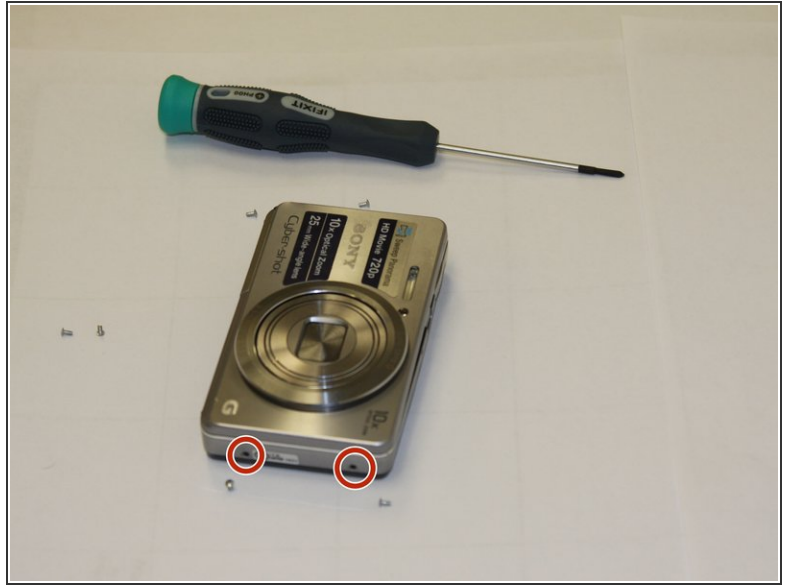
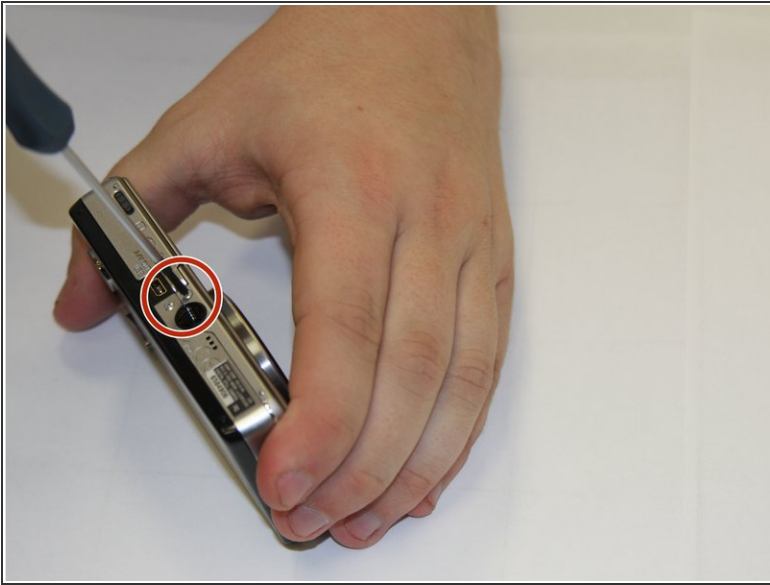
## Step 4 — Front and Back Case



- Remove the wrist strap

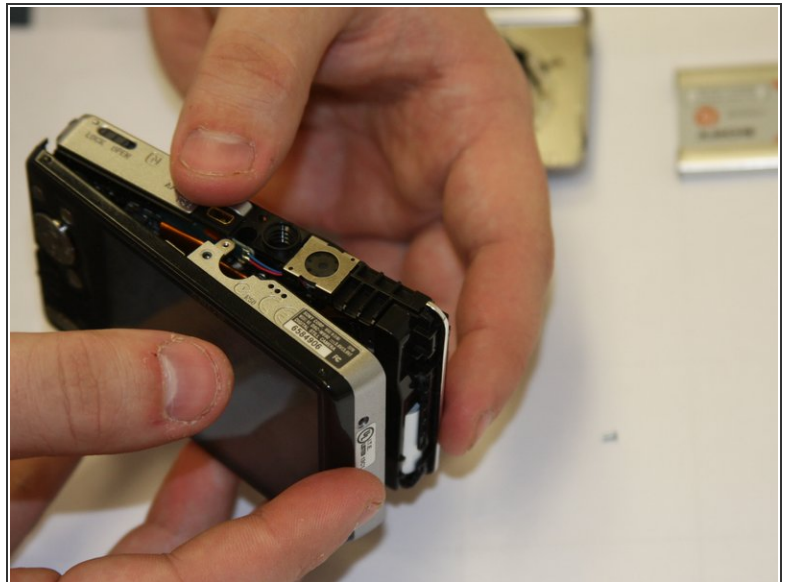
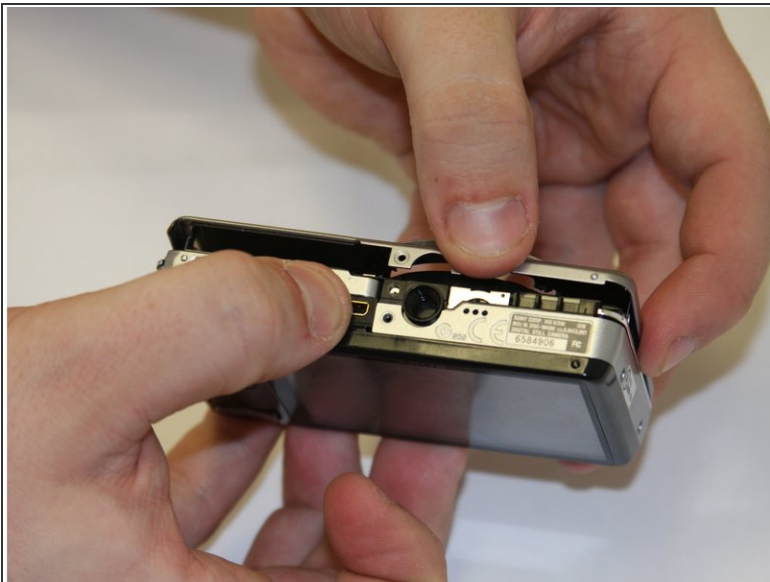


## Step 5



- Remove all 6 3mm outside screws

## Step 6



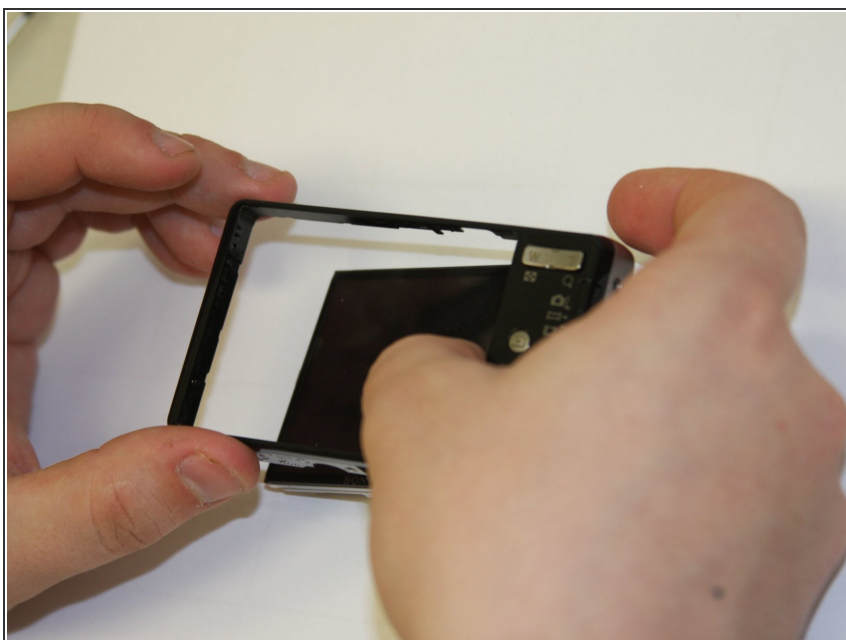
- Carefully pry the case apart.

## Step 7 — Navigation Buttons Circuit board



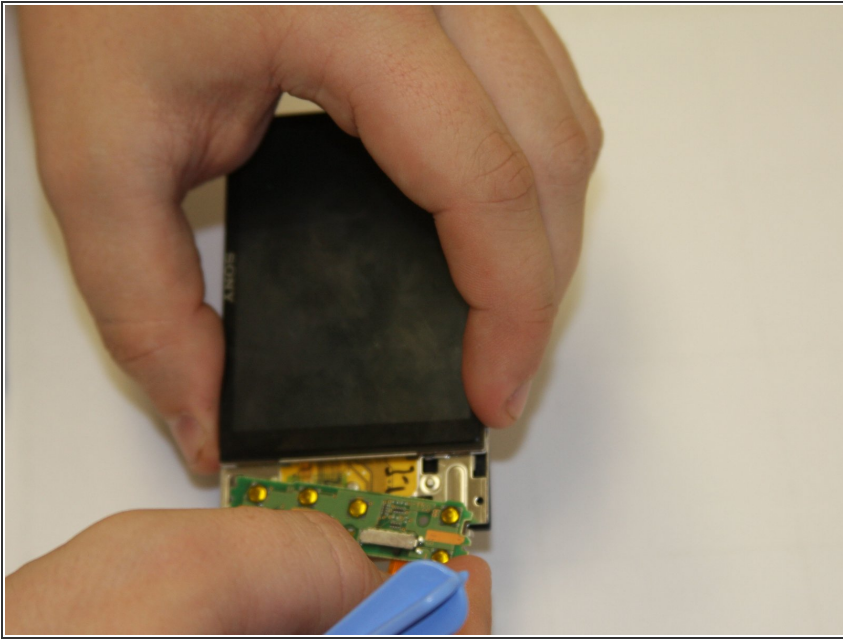
- Use spudger to delicately open wire contact.

## Step 8



- Gently push LCD screen out of back case.

## Step 9



- Remove and replace the button circuit board.

To reassemble your device, follow these instructions in reverse order.