



Nikon Coolpix P510 LCD Replacement

This guide will walk the reader through on the steps involved to take apart the camera to get to the LCD. Once the user has done that they can easily replace that part.

Written By: Brian Hulsey



INTRODUCTION

If you are having issues with your LCD, this guide will help you replace it with a minimal effort. This part is easy to get to, and easy to replace. Other than a screwdriver and a plastic opening tool, nothing else is needed to accomplish this.



TOOLS:

- [iFixit Opening Tools](#) (1)
 - [Phillips #00 Screwdriver](#) (1)
 - [Phillips #1 Screwdriver](#) (1)
-

Step 1 — Battery Removal



- Flip the camera over and push the tab on the battery cover to open the battery compartment.

Step 2



- Push the little yellow tab to allow the battery to slide out.
- With the tab pushed out, pull the battery out.

Step 3 — LCD Screen Window



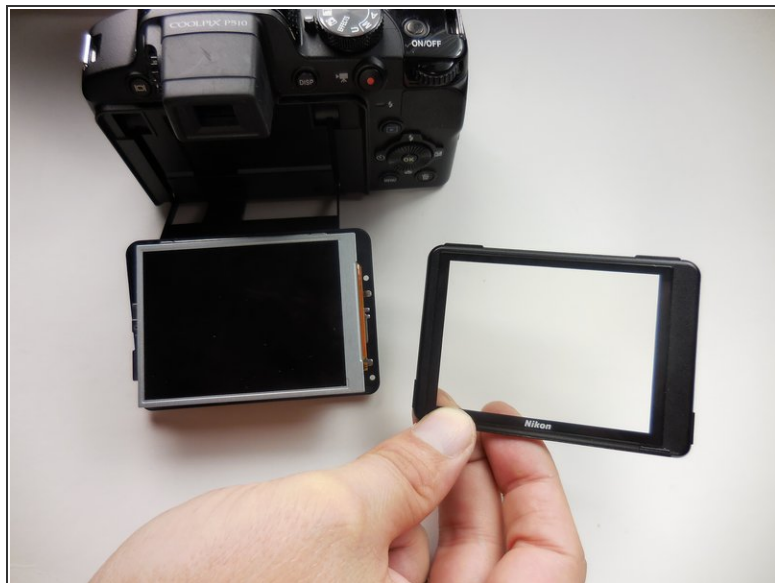
- Extend the LCD screen out and turn the camera upside down to get access to the screws on the bottom.

Step 4



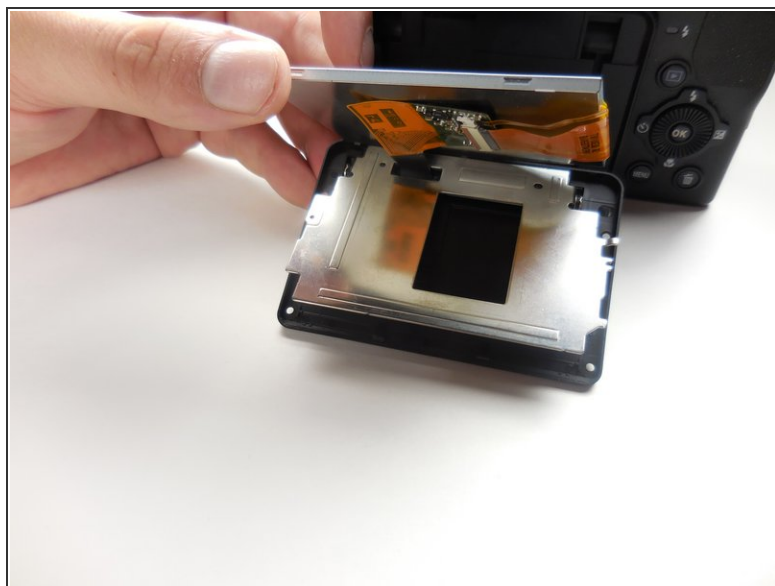
- Take the four 4mm PH00 Phillips screws out.

Step 5



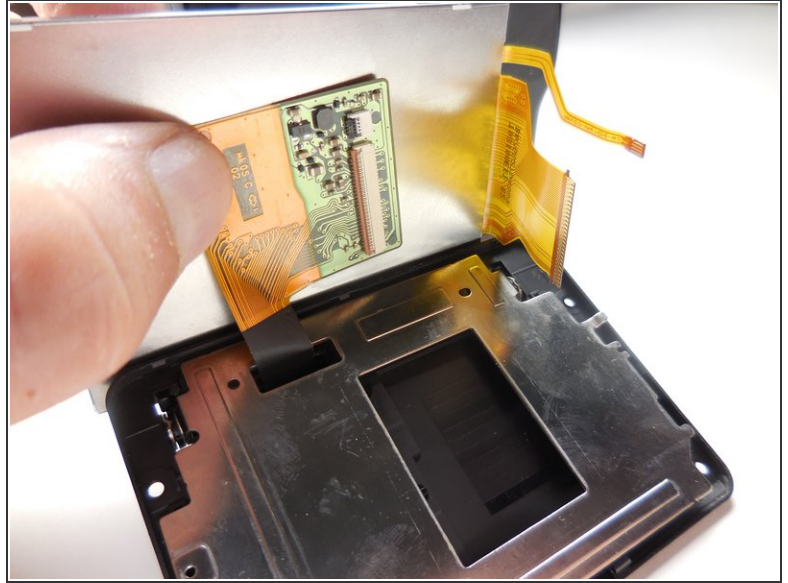
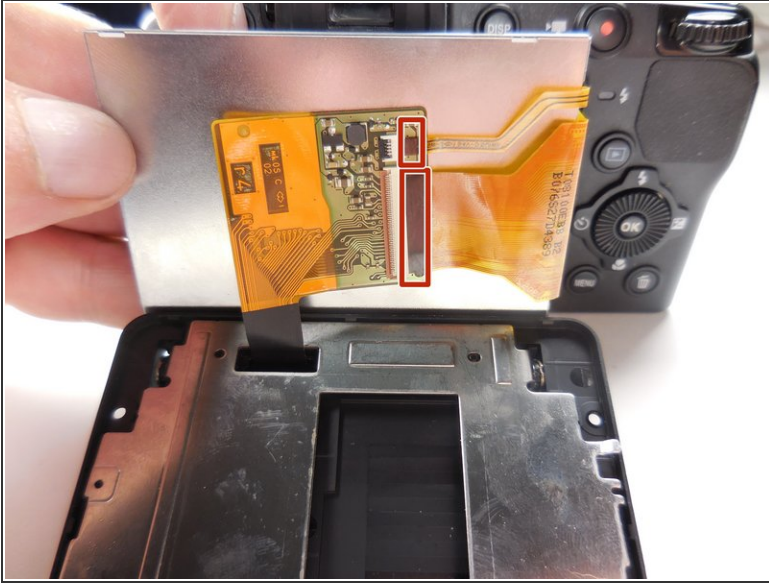
- Use a plastic opening tool to trace around the screen to pop the front and back section apart.

Step 6 — LCD



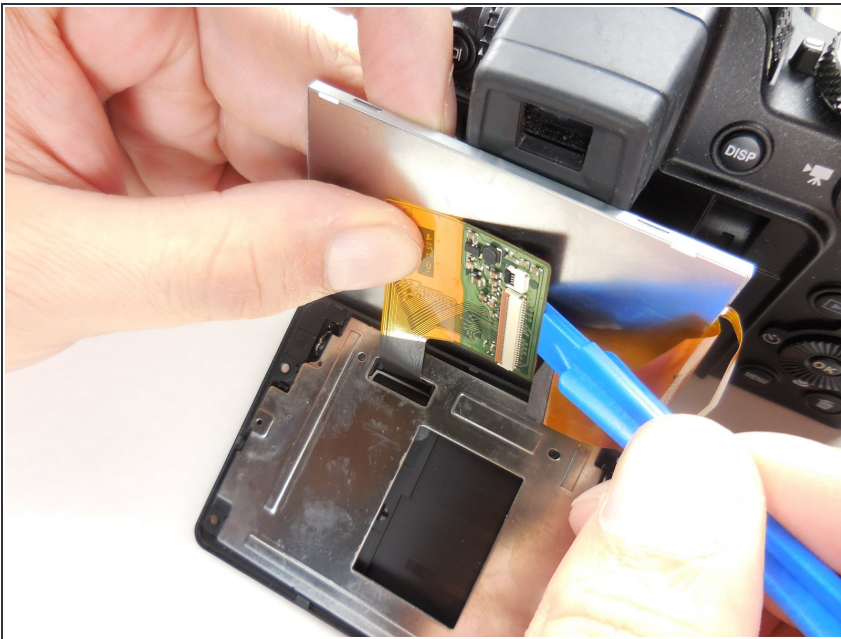
- Tilt the LCD up to get access to the back of it.

Step 7



- Unplug the ribbon cables on the side of the chip under the LCD by simple pulling lightly on them.

Step 8



- The chip has an adhesive on it to keep it attached to the LCD, and you will need to use a plastic opening tool to get it off.
- ❗ It may take a little bit of pressure to get the chip off. Be gentle to make sure you don't break the chip.

To reassemble your device, follow these instructions in reverse order.