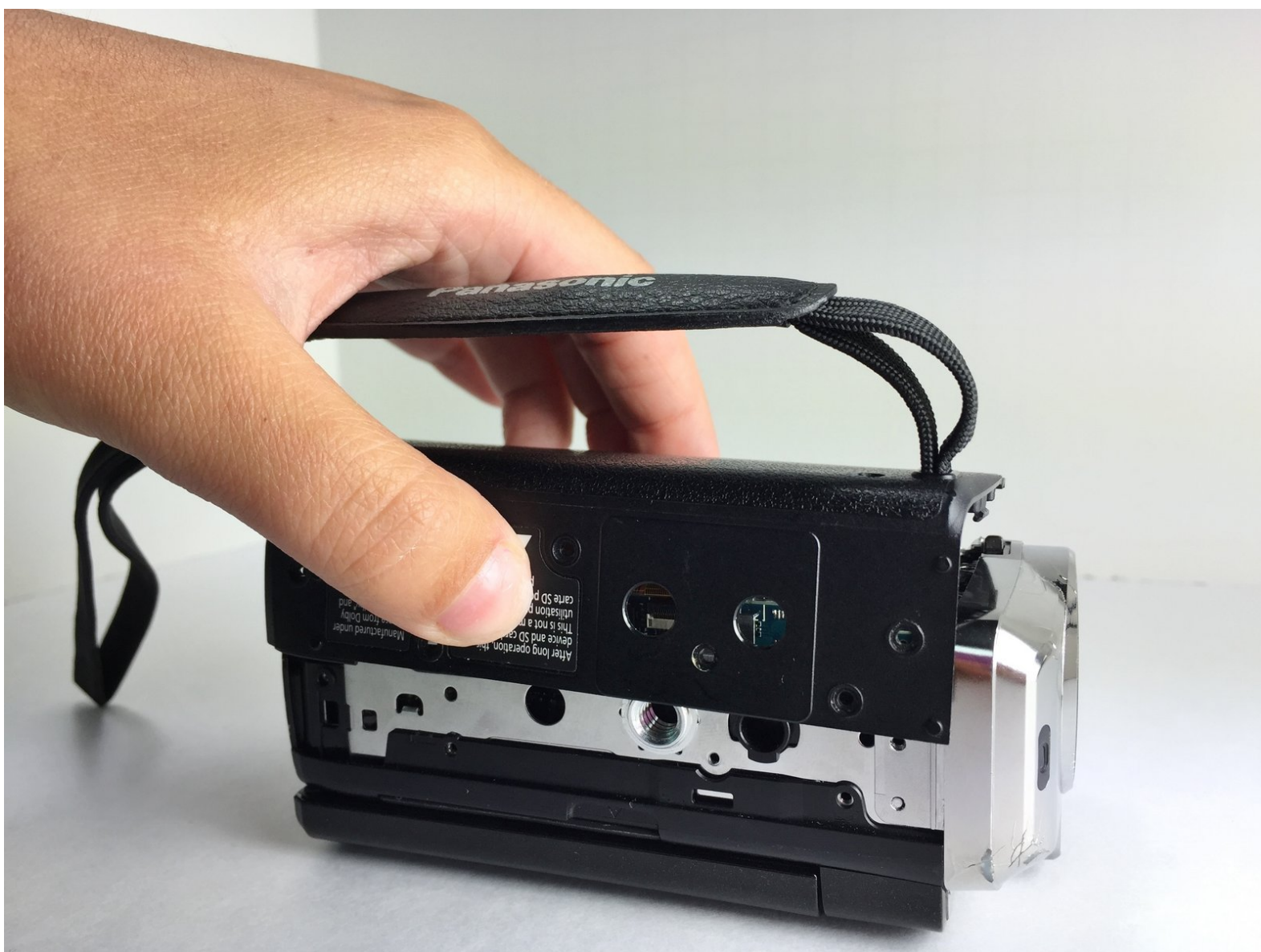




# Panasonic HDC-TM15 Side Cover Replacement

This guide for the Panasonic HDC-TM15 will demonstrate how to replace the side cover of the camcorder, which is attached to the adjustable hand strap.

Written By: Tricia Fallo



---

## INTRODUCTION

Using this guide, a Panasonic HDC-TM15 owner will be able to remove the broken side cover of the camcorder and replace it with a new one.



### TOOLS:

- [Phillips #00 Screwdriver](#) (1)
-

## Step 1 — Side Cover



- Using the Phillips #00 Screwdriver, unscrew the five .5 mm Phillips #00 screws on the hand-strap side of the camcorder.

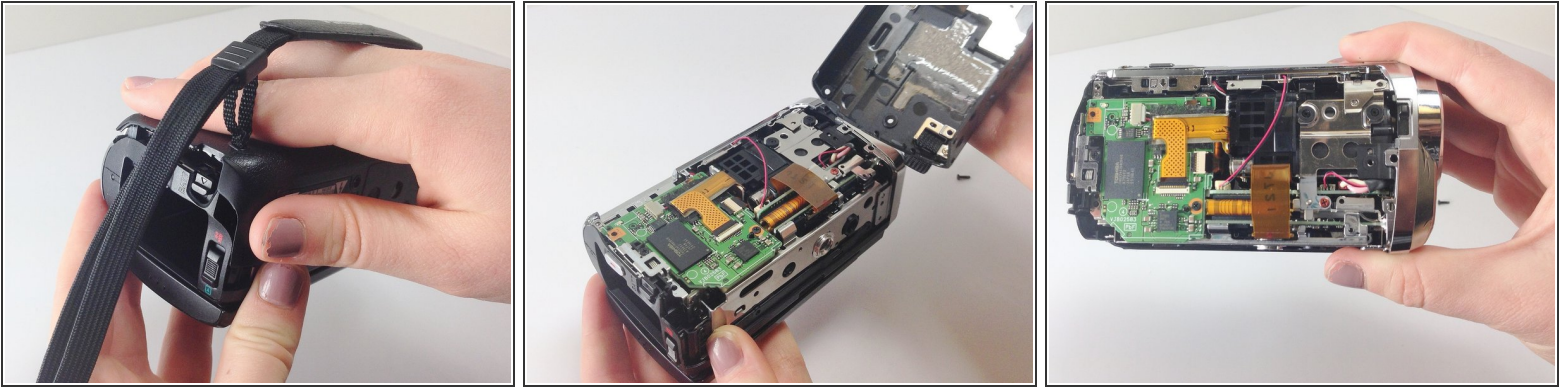
## Step 2



- Next, unscrew the six .5 mm Phillips #00 screws on the bottom of the camcorder.

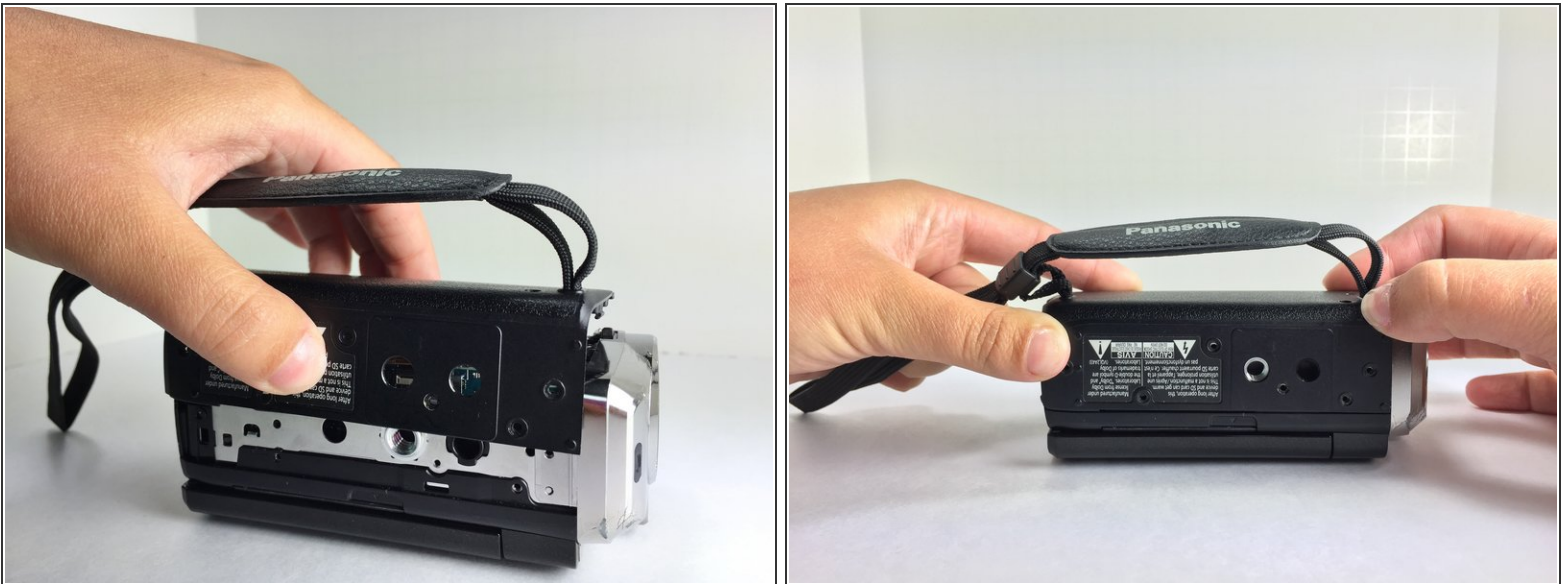


## Step 3



- By putting your hand through the hand-strap, tug on the side cover until it comes off completely.
- Once the old cover is completely detached, set it aside.
- The inside of your camcorder should now be completely exposed, as seen in the photos.

## Step 4



- Line up the new side cover in the exact same place, ensuring that the screw holes match.
- Re-screw the side cover into place.

## Step 5



- Gently tug on the hand-strap to ensure that the screws are tight and the side cover is secure.
- When the side cover is securely fastened, you have completed the side cover replacement of your Panasonic HDC-TM15 camcorder.

To reassemble your device, follow these instructions in reverse order.