



Samsung ST76 Screen Replacement

Use this guide to replace a damaged or broken screen.

Written By: Angela Fierst



INTRODUCTION

Your camera's screen is essential to the viewing of most camera actions. This guide will teach you how to access and remove the Samsung ST76's screen.

TOOLS:

- [iFixit Opening Tools](#) (1)
 - [Phillips #00 Screwdriver](#) (1)
-

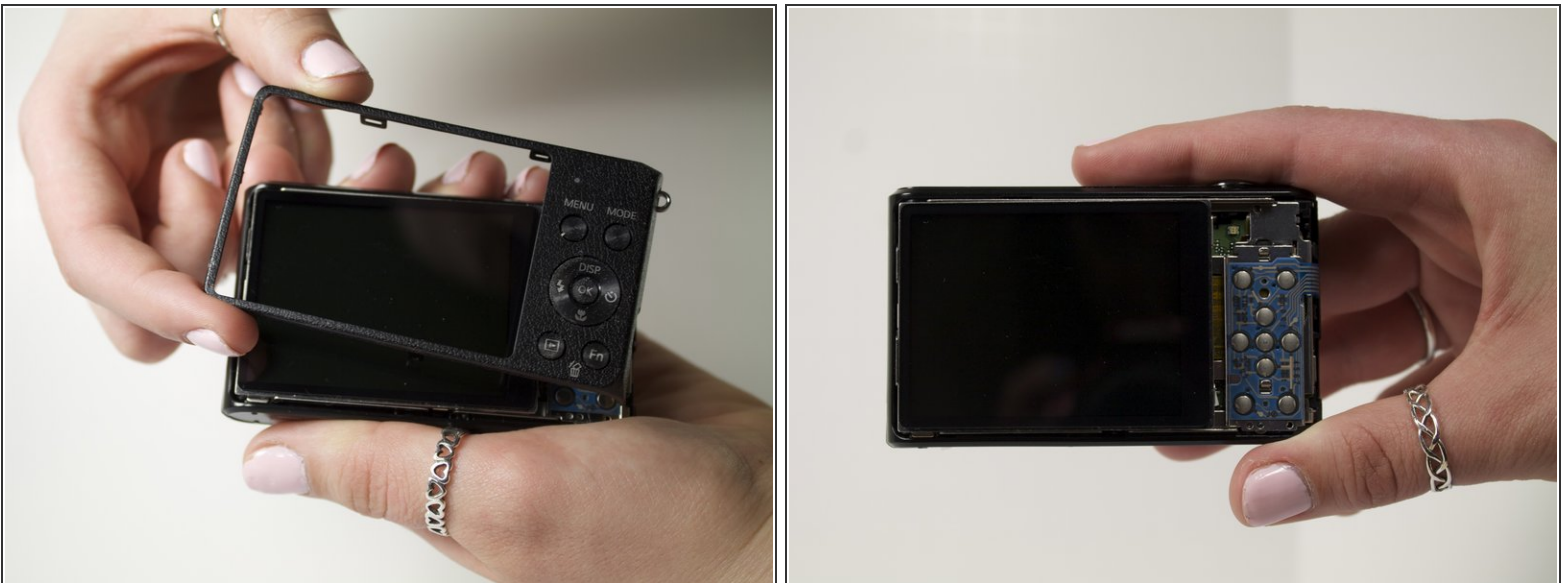
Step 1 — Back Panel



- Use a Phillips head screwdriver to remove 5 screws from the camera. There are 2 4mm screws on the left side, 2 2mm screws on the right side and 1 4mm screw on the bottom.

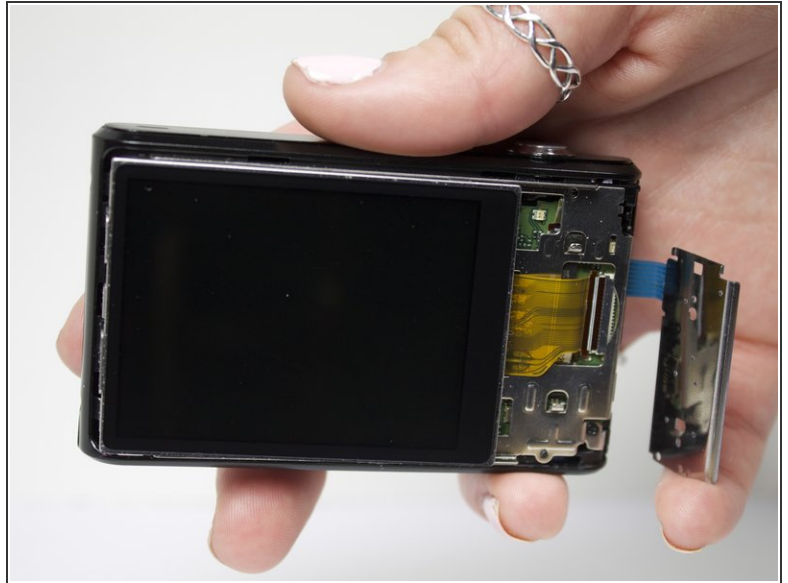
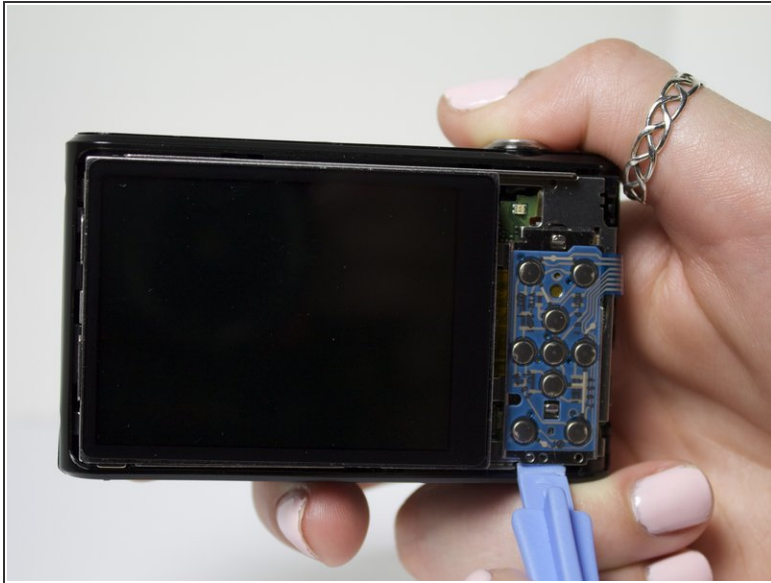
 *Do not mix the 5 screws; they are different sizes.*

Step 2



- Use your fingers to pull the back cover off.

Step 3 — Screen



- Separate the button panel to reveal the port holding the screen on.

✦ *Use a plastic opening tool to help with this task.*

Step 4



- Remove the yellow cable by pulling gently upwards, away from the inside of the camera, until it separates from its port.

To reassemble your device, follow these instructions in reverse order.