



Repairing TRITTON Kunai Left Speaker

This guide will walk you through repairing the left speaker on your headset of your TRITTON Kunai.

Written By: Timothy Meyer



INTRODUCTION

This comprehensive guide will walk you through disassembling your headset, locating any problems with your left speaker, and making repairs. If your device is still under warranty, please [contact](#) Tritton for a replacement before attempting these repairs and possibly voiding your warranty.

The repairs in this guide require soldering, please refer to this [guide](#) and/or this [article](#) from iFixit for additional help.



TOOLS:

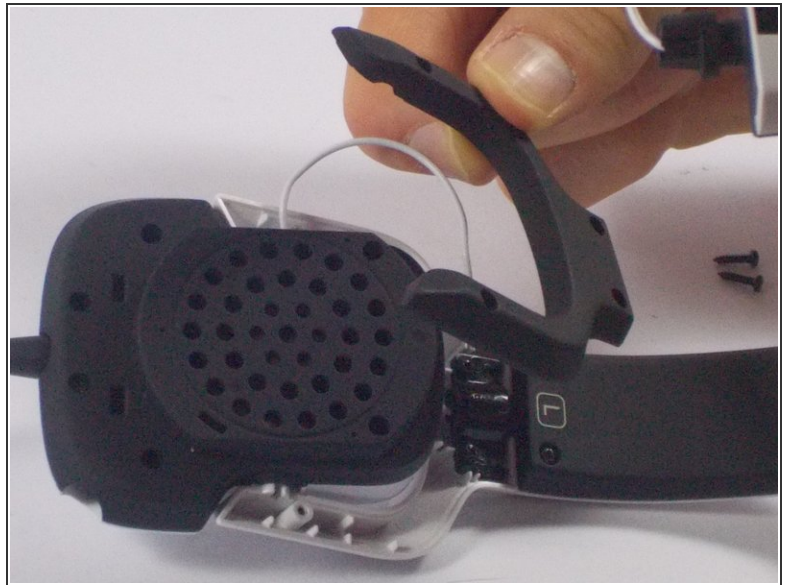
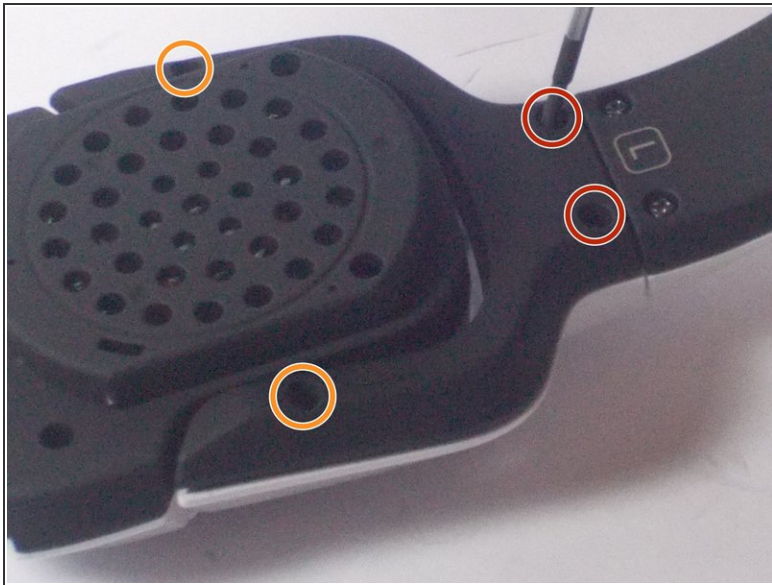
- [Phillips #00 Screwdriver](#) (1)
 - [Soldering Workstation](#) (1)
-

Step 1 — Repairing TRITTON Kunai Left Speaker



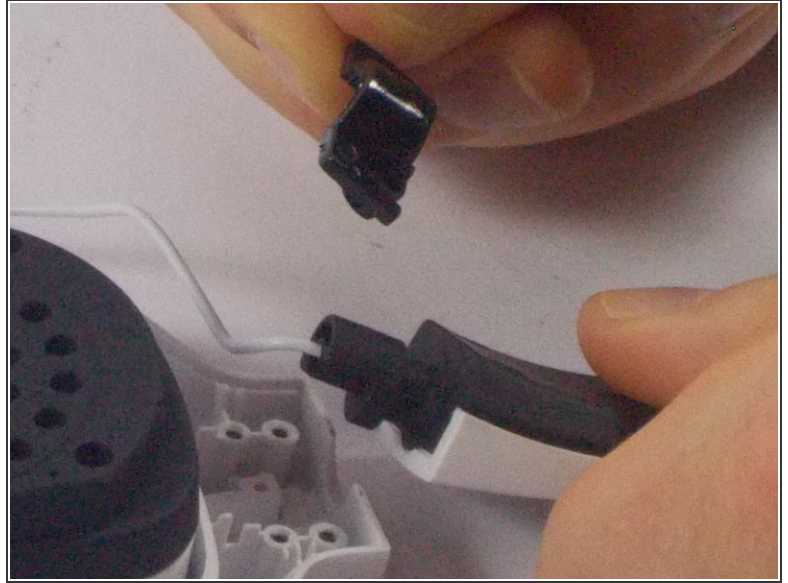
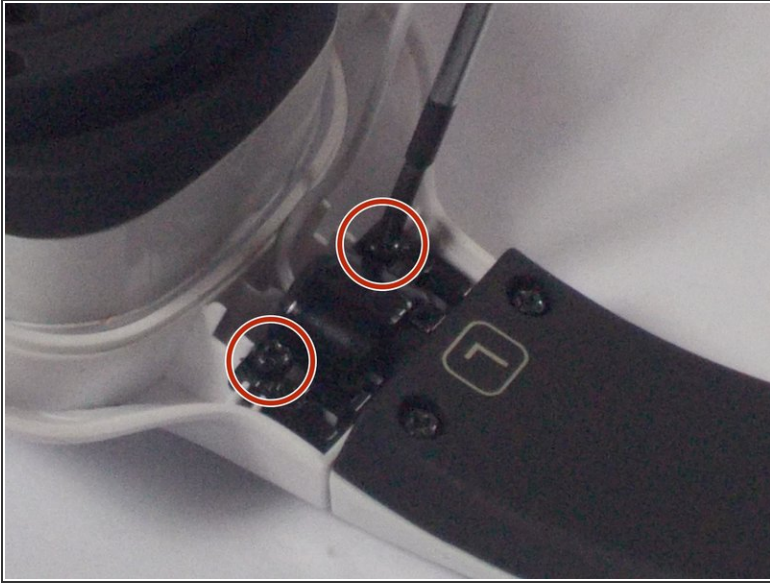
- Grab the ear cushion between your thumb and finger.
- Carefully pull the ear cushion away from the speaker frame until they separate.

Step 2



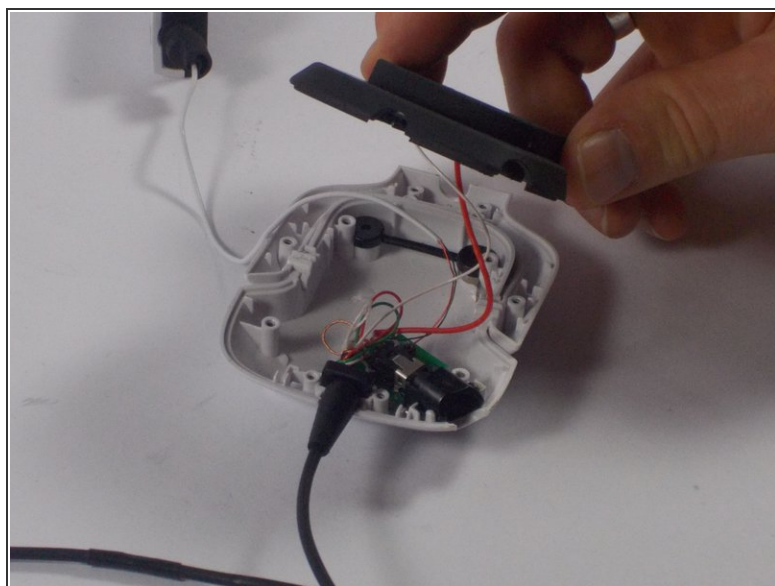
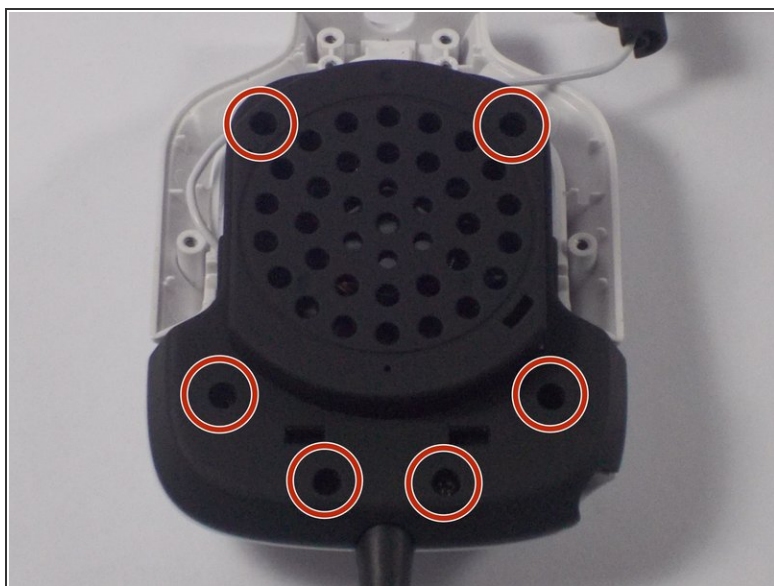
- Use your Phillips #00 screwdriver to remove the two 9mm screws.
- Use your Phillips #00 screwdriver to remove the two 7mm screws.
- Remove the now detached black cover from the hinge frame.

Step 3



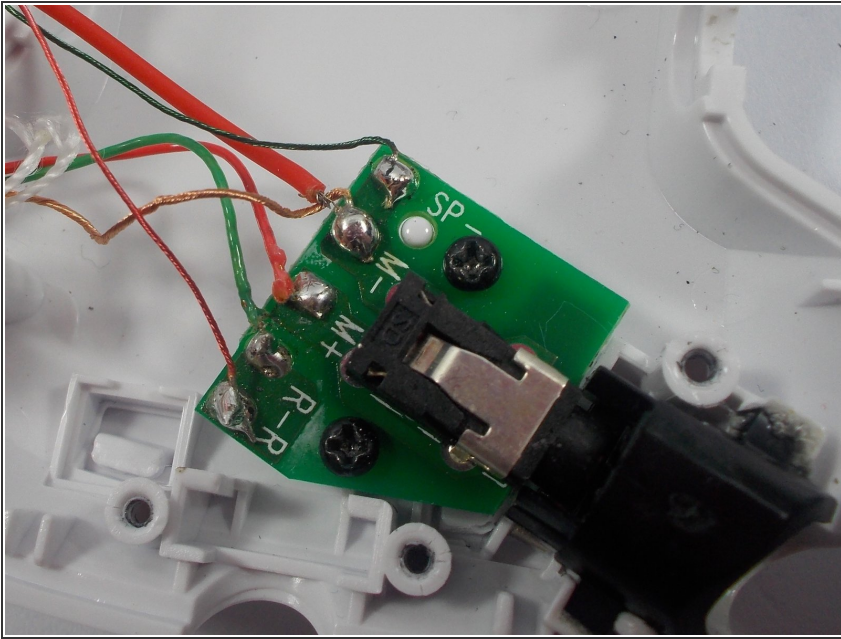
- Use your Phillips #00 screwdriver to remove the two 7mm screws holding the bracket, headband, and hinge assembly together.
- Separate the bracket, headband, and speaker housing's hinge.

Step 4



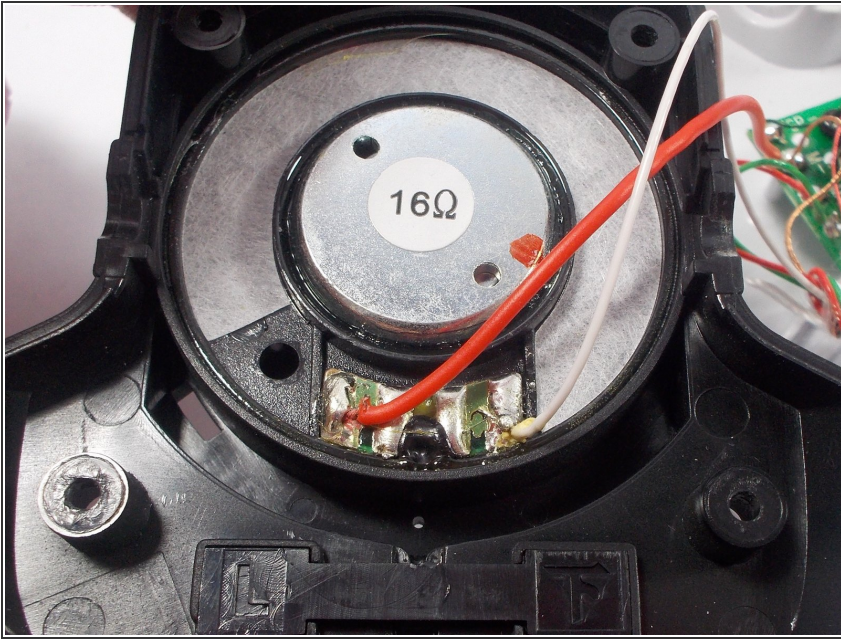
- Use your Phillips #00 screwdriver to remove the six 7mm screws holding the black speaker housing to the wiring housing.
 - Carefully separate the black speaker housing from the wiring housing.
- ⚠ Be gentle, the wires and solder points inside are fragile.

Step 5



- This is the circuit board for the USB connection to the speakers.
 - Inspect the five solder points for a broken wire connection. They are labeled SP-, M-, M+, R-, and R.
 - If any connections are broken, re-solder the wires. Use this image as a reference for correct wiring.
- ⚠ Carefully test the headset. Avoid touching the internals while the device is plugged in.
- If your speaker is now working, skip to the conclusion.
- ⓘ Reinforcing the wires with electrical tape before reassembly is recommended.

Step 6



- This is the back of the left ear speaker inside the black speaker housing.
- ⓘ The red wire connects to the leftmost terminal and the white wire connects to the rightmost terminal.
- Inspect the red and white wires and two solder points for a broken connection to the speaker.
- If any connections are broken, re-solder the wires. Use this image as a reference for correct wiring.

⚠ Carefully test the headset. Avoid touching the internals while the device is plugged in.

- ⓘ If your speaker is still not working, you may need to replace the speaker or USB circuit board. Please refer to the manufacturer's product specs from their [website](#) for further details.

To reassemble your device, follow steps 1 through 4 in reverse order.