



iDea USA CT702 Speaker Replacement

This guide will include disassembling the CT702...

Written By: Daniel Brandt



INTRODUCTION

This guide will include disassembling the CT702 tablet and partially removing the motherboard from the device.

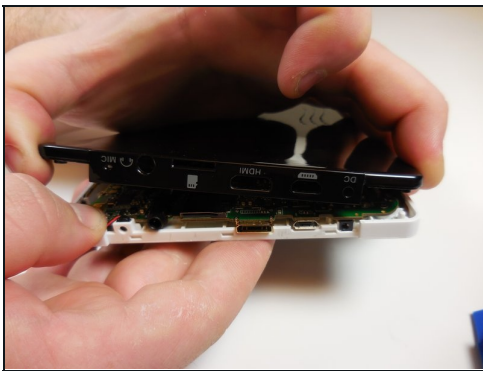
TOOLS:

[iFixit Opening Tool](#) (1)

[Soldering Iron](#) (1)

[Phillips #00 Screwdriver](#) (1)

Step 1 — Speaker



- Place the tablet on a table with the portholes facing you.
- Use fingernail or plastic opening tool to gently pry the black panel around the portholes.
 - ⓘ Be gentle and take your time.

Step 2



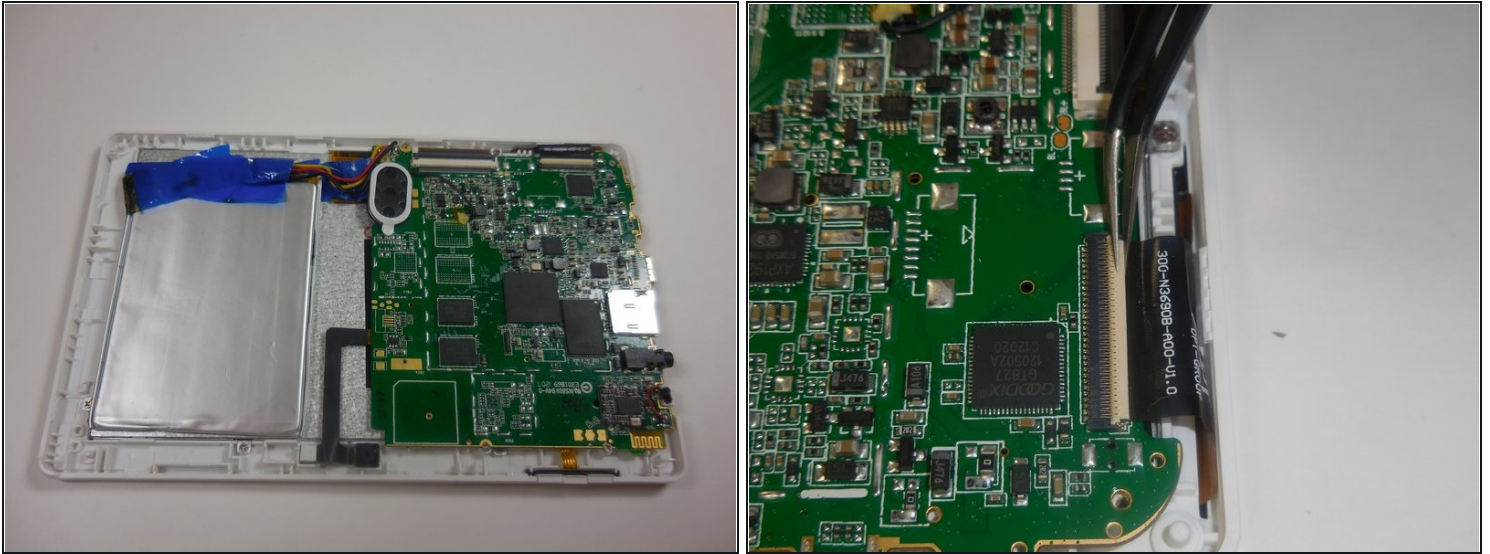
- Use fingers to pry the rest of the back off; slowly apply pressure from each side to break each clip connection.

Step 3



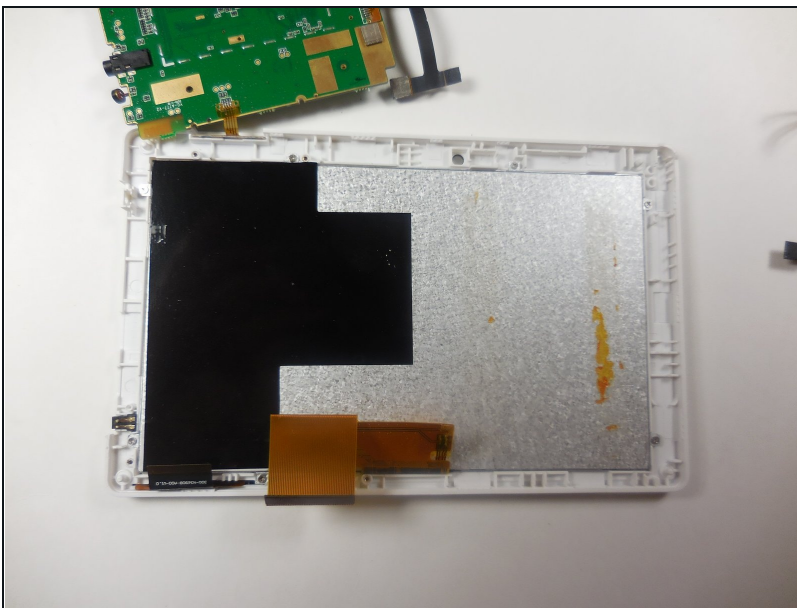
- ① Once the back cover has been removed the device should look like this.
- Remove the motherboard by unscrewing the four 4 mm screws along the edges of the board using a Philips 00 screwdriver.

Step 4



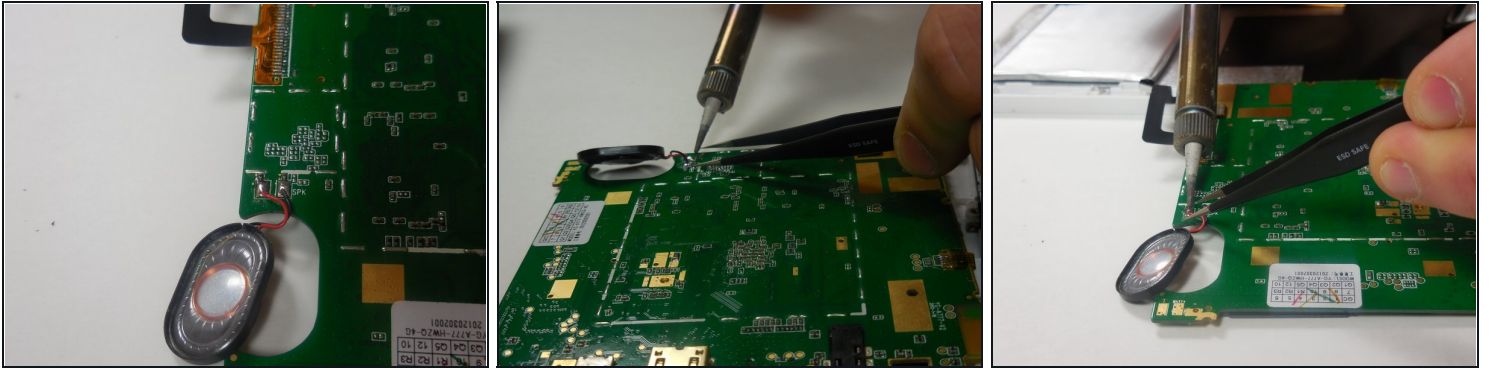
- After removing the four screws, disconnect the two ribbon wires; to disconnect the wire lift up on the plastic tab covering the wire.
- When the tab is in the up position gently pull the ribbon wire out of its connection.

Step 5



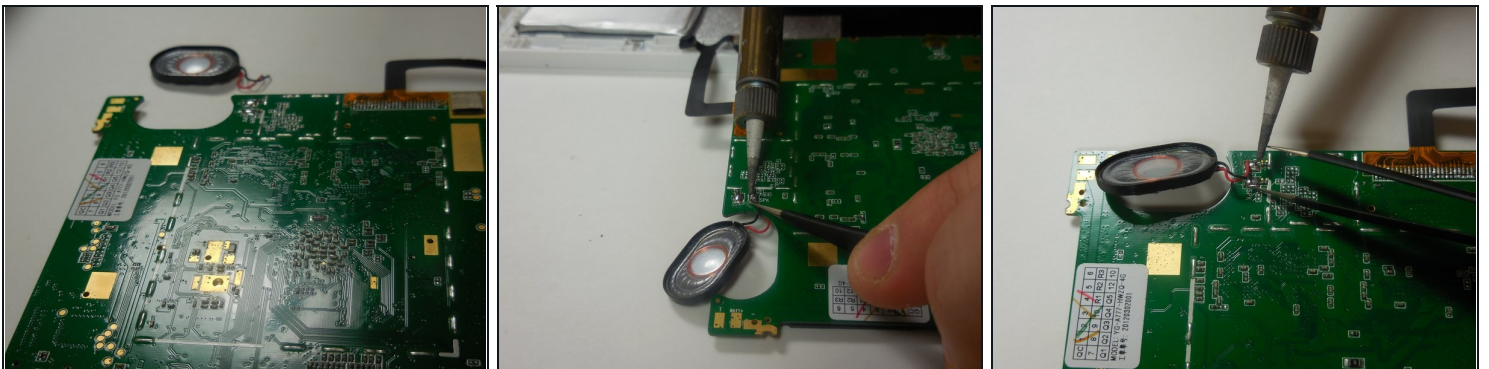
- Once the ribbon wires are disconnected, gently lift up on the motherboard and flip it.
- ① All of the wires have not been disconnected from the motherboard. Be careful not to damage the remaining wires.

Step 6



- The speaker is located towards the edge of the motherboard. You will need to solder the speaker connections to remove it.
 - ① Your speaker may have a mesh cover and may not look like the one in the picture.
- To solder the connections apart take the hot soldering iron and gently touch it to the end of the wire at the connection to the motherboard. At the same time use [tweezers](#) to gently pull the wire away from the connection.

Step 7



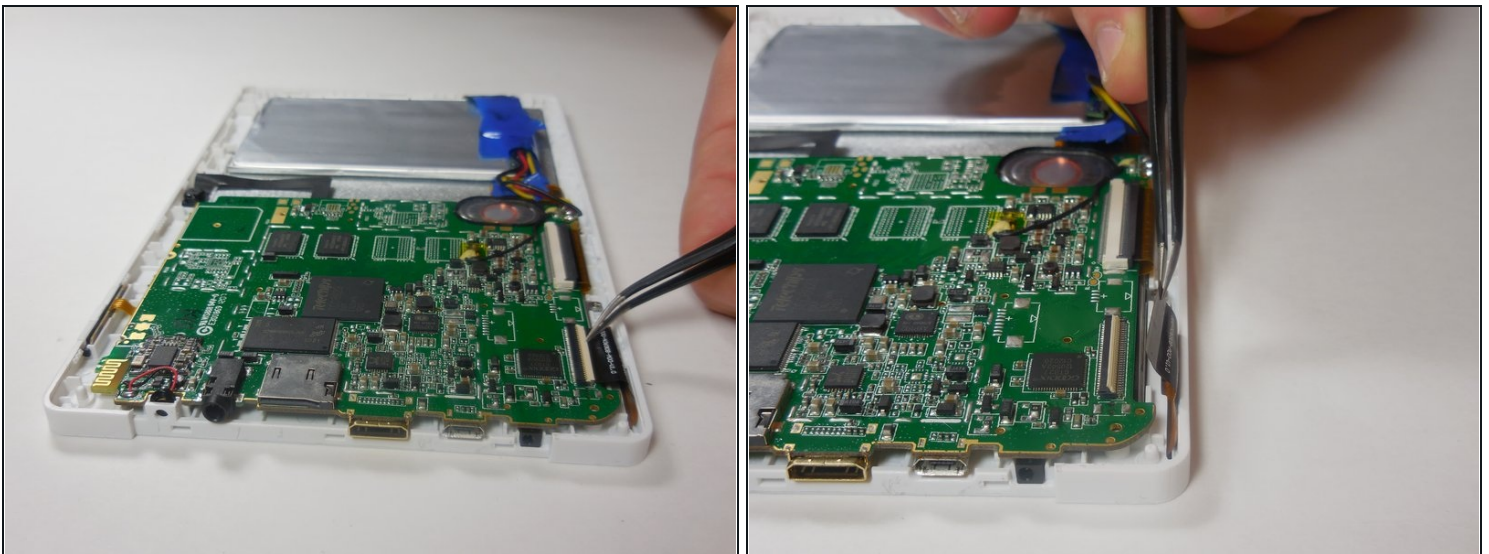
- To connect the new speaker you will need to solder the new wire connections onto the motherboard.
- Gently touch the end of the new wire to the existing connection, and use the soldering iron to heat the solder and connect the wire.
- ① You will need to do this for both of the speaker connections.

Step 8



- Once the new speaker is connected, gently lift the motherboard and place it back in the frame. Be sure to line up the holes to screw back in place.
 - ① Make sure the speaker is in its original place before screwing the device back together.
- Use a Philips 00 screwdriver to screw in the four 4 mm screws along the edge of the motherboard.

Step 9



- After screwing in the motherboard, reconnect the ribbon wires to their connections.
 - To do so, insert the ribbon wire into its slot and snap down the tabs on the wire's connection to secure them in place.
- To replace the back cover follow the first three steps in reverse order

To reassemble your device, follow these instructions in reverse order.