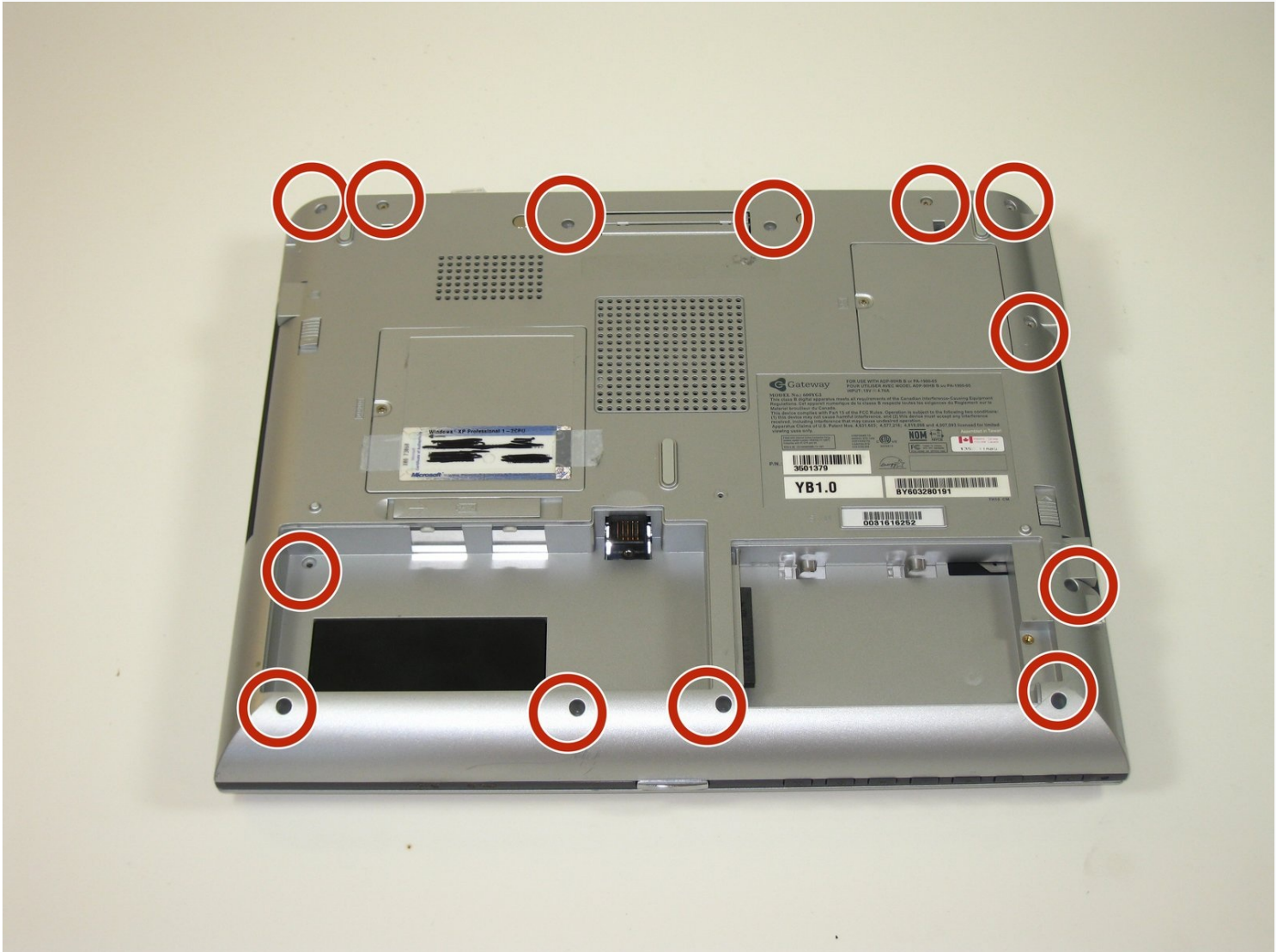




Gateway 600YG2 Top Case Replacement

Use this guide to replace the top case of your...

Written By: Elizabeth Mazer



INTRODUCTION

Use this guide to replace the top case of your Gateway 600YG2 laptop. The top case surrounds the keyboard and the mousepad. Removing it allows you to access components on the system board underneath the keyboard. It also allows you to [replace the system board](#) altogether.

This guide does not require any specialized skills.

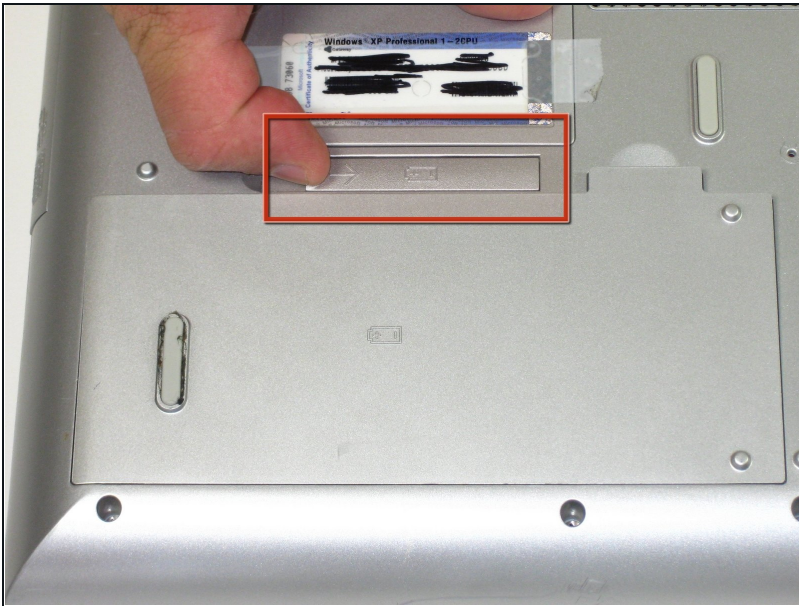
Before beginning, make sure to shut down your laptop and disconnect it from any external power source.

TOOLS:

Phillips #0 Screwdriver (1)

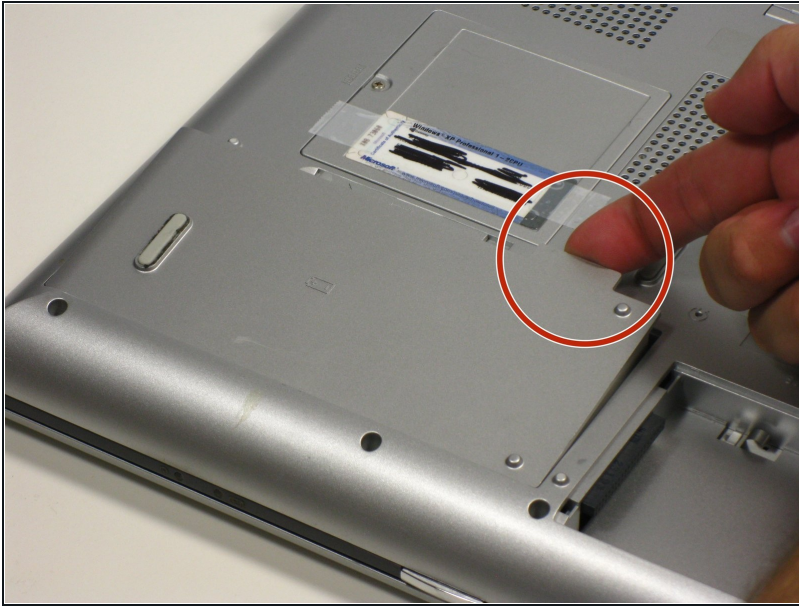
Spudger (1)

Step 1 — Battery



- Flip the laptop over.
- Slide the battery release tab to the right with your index finger to open the battery cover.

Step 2



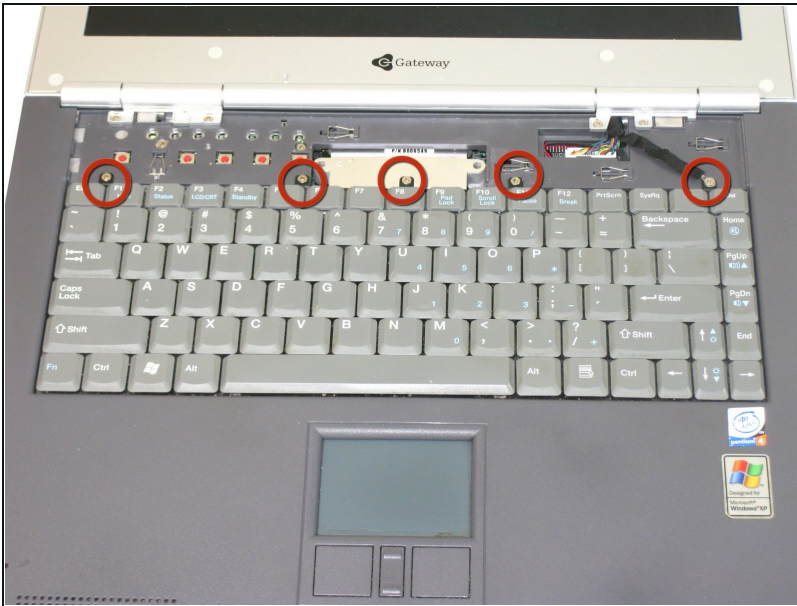
- Remove the battery cover using the tab on the right side.
- Take the battery out with your index finger.

Step 3 — Power Button Panel



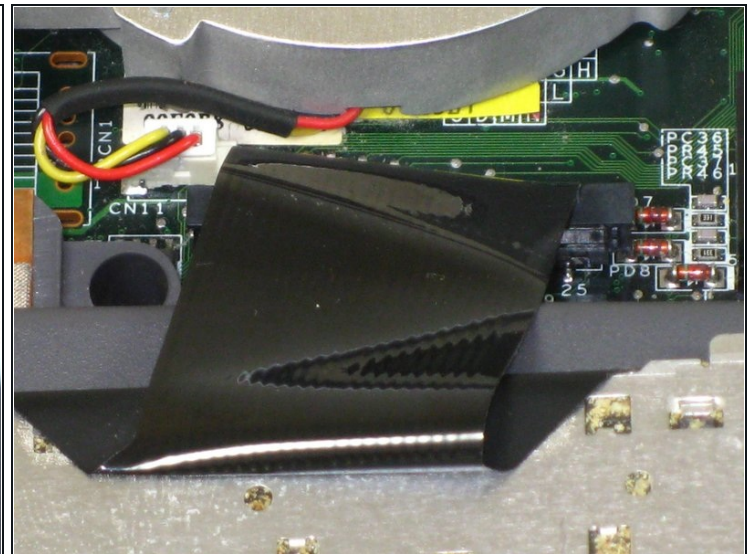
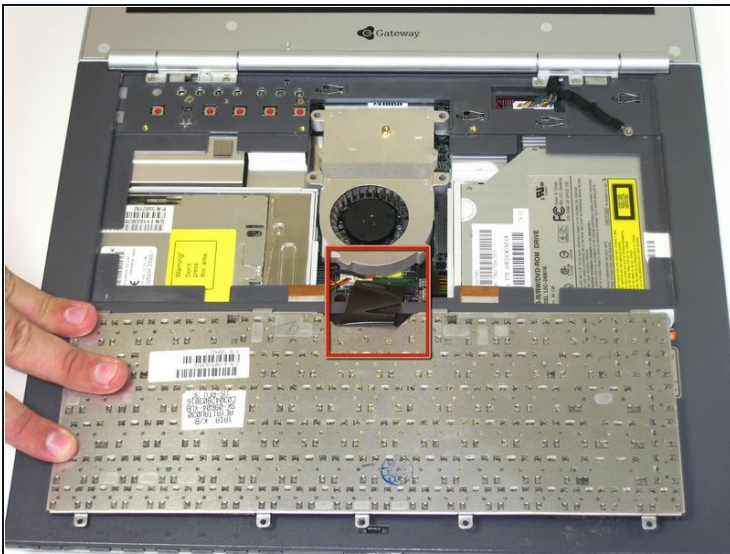
- Insert the spudger between the "sysrq" and "ins" keys.
- Gently pry free the power button panel above the keyboard, beginning from the right and moving to the left.

Step 4 — Keyboard



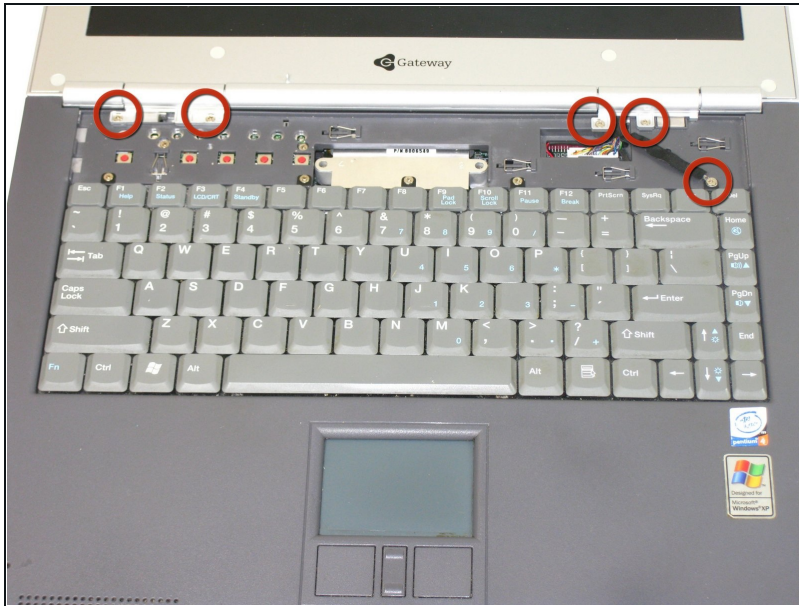
- Remove the 5 screws holding the keyboard in place.

Step 5



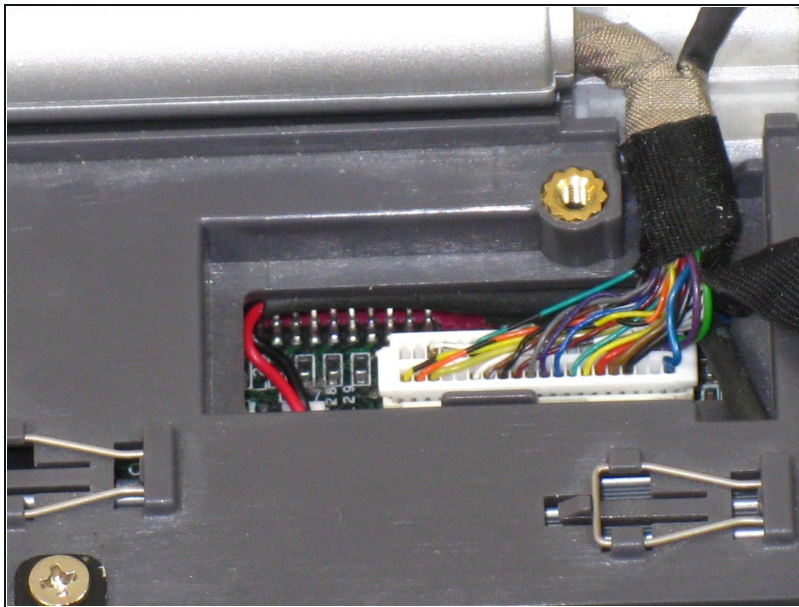
- ⚠ Potential for device damage: When lifting the keyboard out, do not lift the keyboard up. Only fold back along the space bar edge.
- ⚠ Potential for device damage: Do not pull the black cable by the ribbon section. Only pull it from the connector itself.
- Follow the black ribbon cable to the connector and gently pull straight up.

Step 6 — LCD



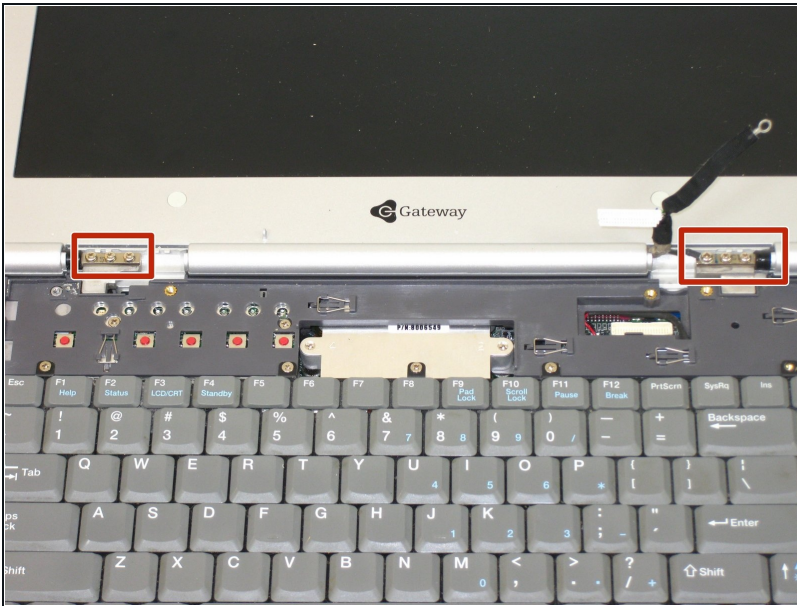
- Remove the five screws with a Phillips #0 screwdriver.
- ⓘ The LCD hinge covers are held in place by four screws. One screw is for grounding the LCD.
- Lift the hinge covers along the outer edges with the spudger until they are released.

Step 7



- Gently unplug the LCD from the system board.

Step 8



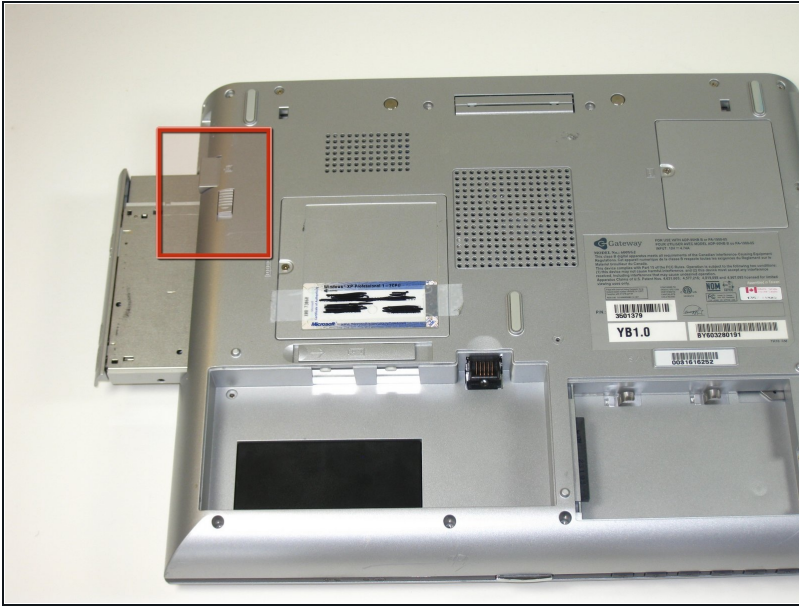
- Using the Phillips #0 screwdriver, remove six screws that hold the LCD to the hinge.

Step 9



- ① Check if any cables are still connected before pulling out the LCD.
- Remove the cable by gently pulling it out while holding down the LCD.

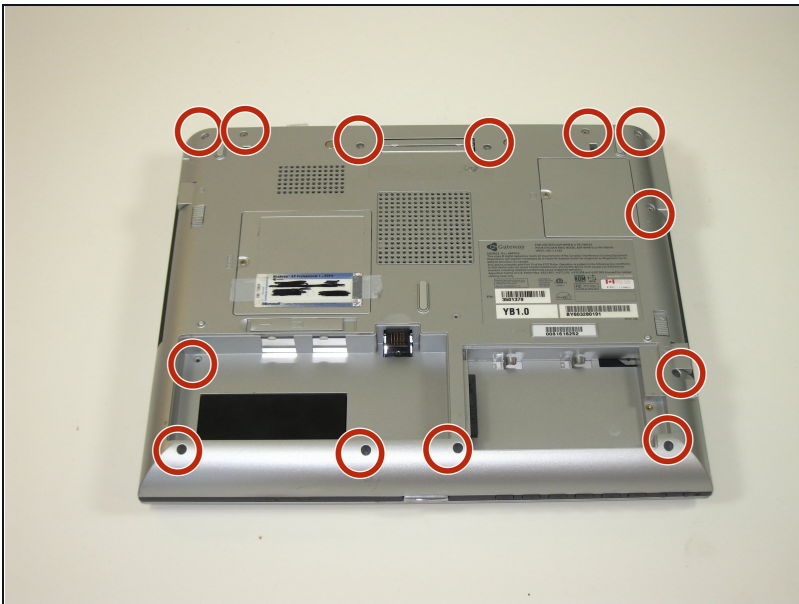
Step 10 — CD/DVD or Floppy drives



- Slide the release and push the button to eject the drive.
- Remove the drive.

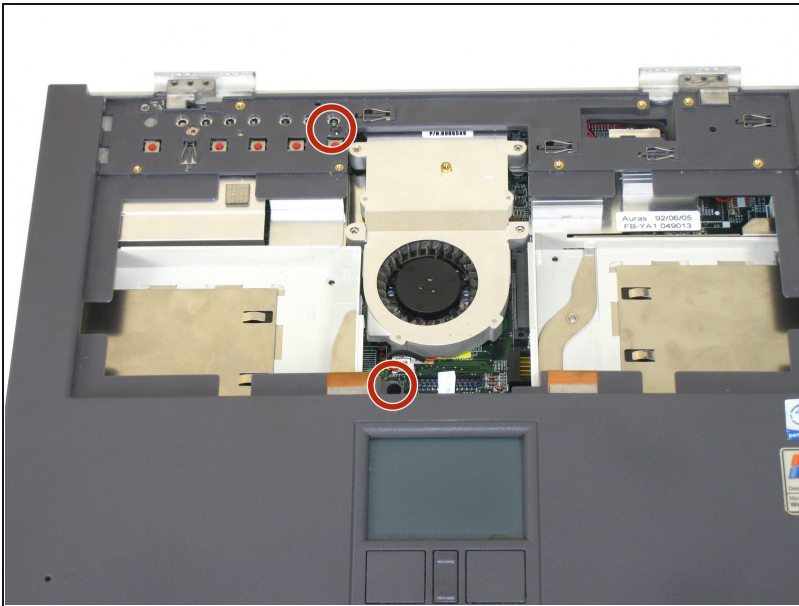
⚠ When reinserting the drives, be sure to put them in the original slot to avoid interface conflicts.

Step 11 — Top Case



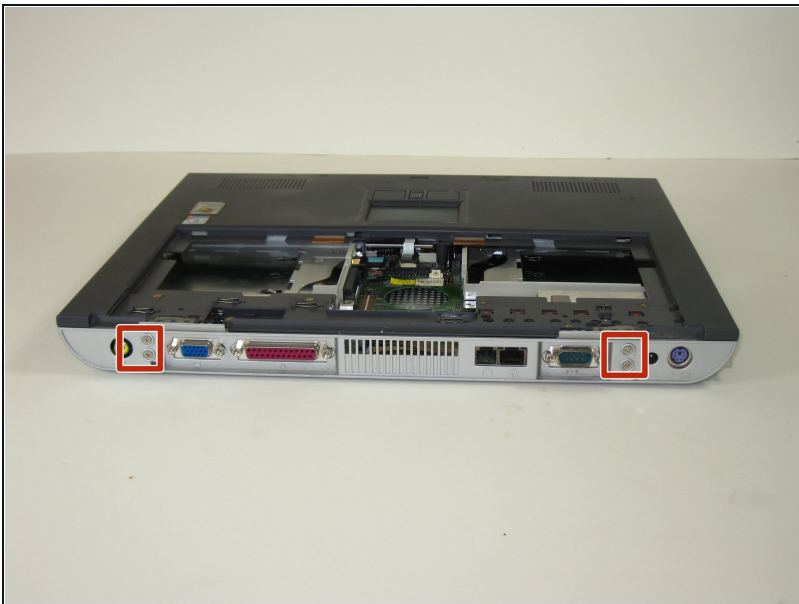
- Use a Phillips #0 screwdriver to remove the thirteen screws from the bottom of the computer.

Step 12



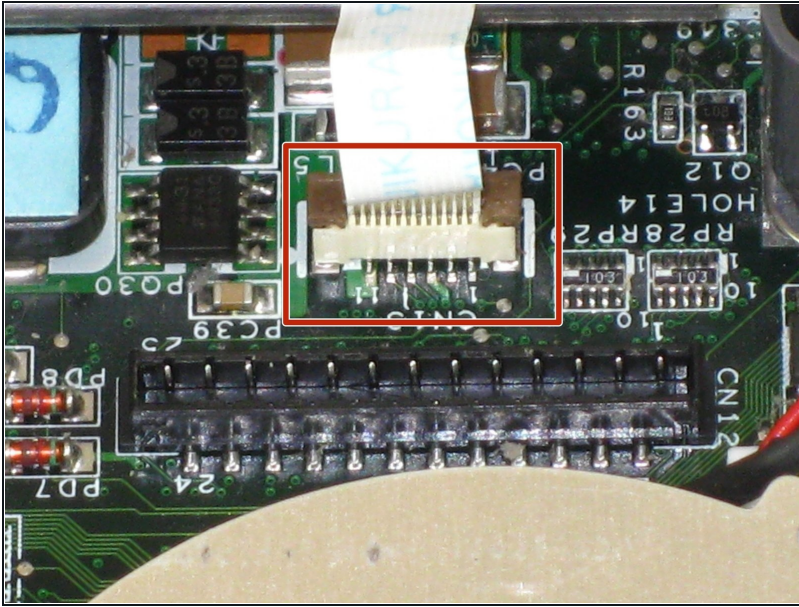
- Remove the two indicated screws.

Step 13



- Remove the four screws from the back of the case.

Step 14



⚠ Potential for device damage:
Failure to properly do this step
will damage your mouse pad
ribbon.

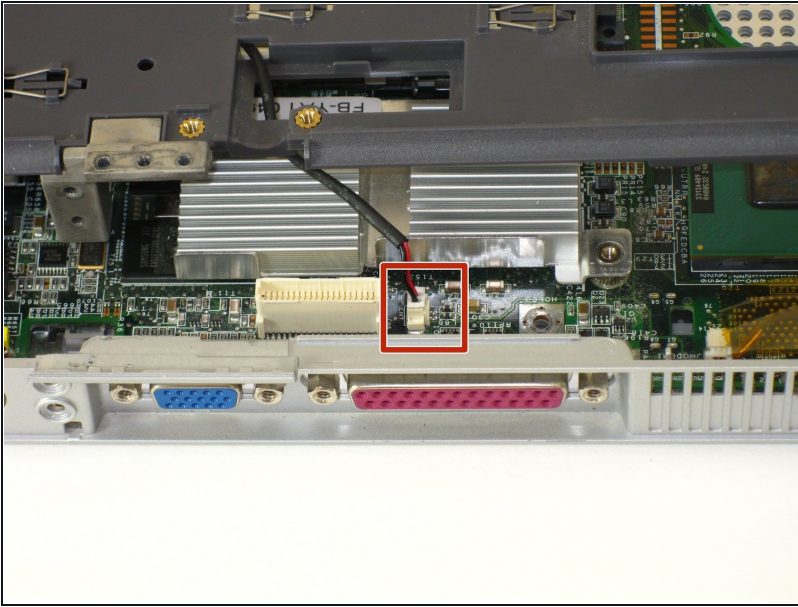
- Lift the plug holding the mouse ribbon about 1/16 inch or until it stops
- Remove the ribbon.

Step 15



- Insert your spudger between the upper and lower case at the drive bay closest to the battery.
- Carefully and slowly go around the entire case, unseating all plastic clips holding the upper and lower cases together.

Step 16



- Lift the upper case about 1/4 inch.
- At the rear of the case is one last connecting wire. Unplug it and remove the upper case.

To reassemble your device, follow these instructions in reverse order.