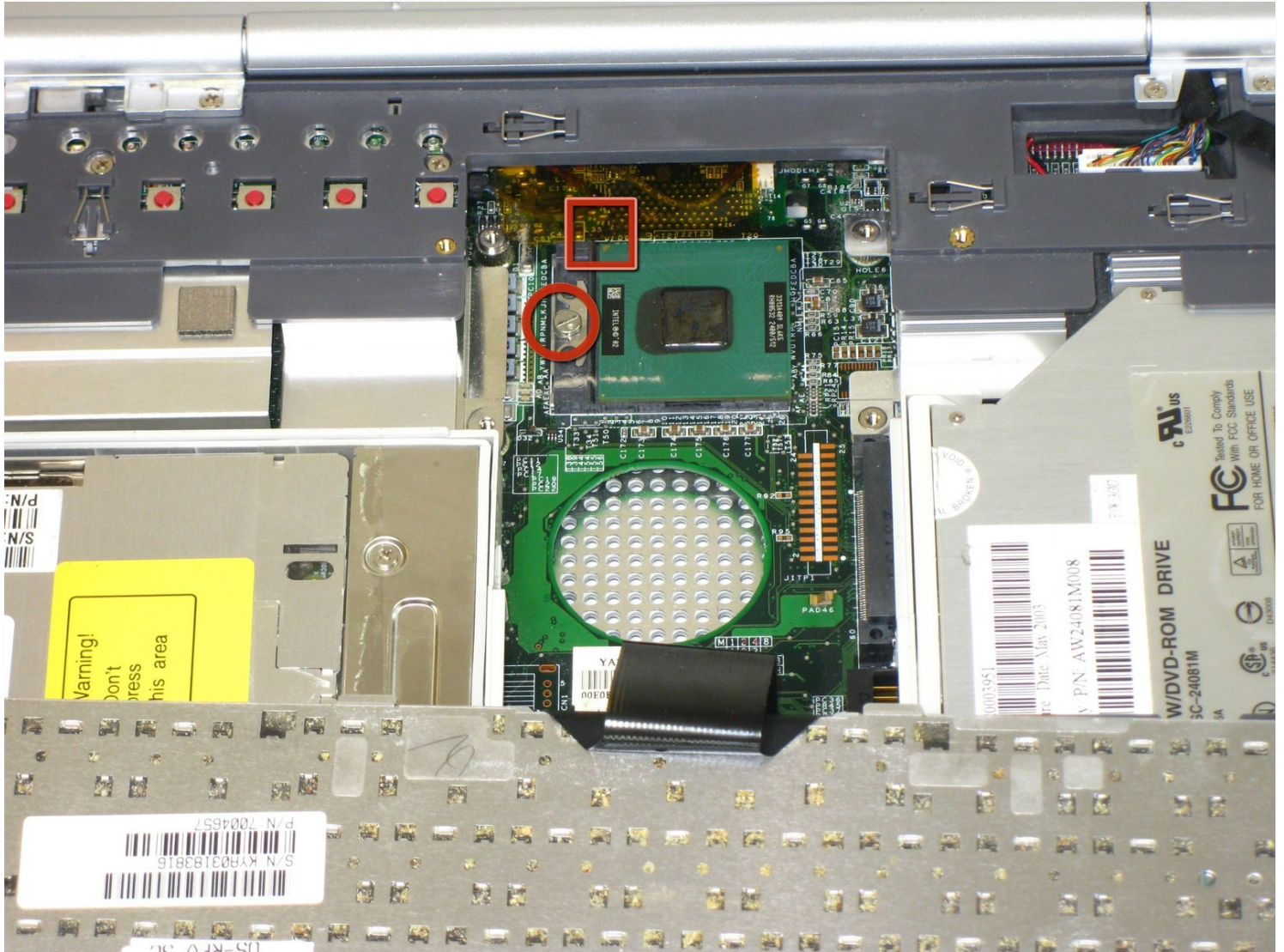




# Gateway 600YG2 CPU Replacement

How to replace or upgrade the CPU

Written By: Elizabeth Mazer



# INTRODUCTION

How to replace or upgrade the CPU

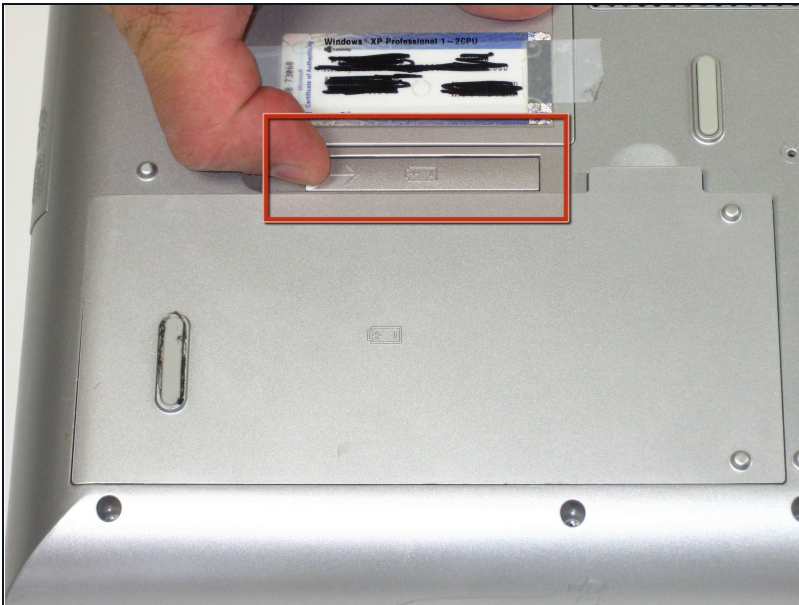
## TOOLS:

6-in-1 Screwdriver (1)

Phillips #0 Screwdriver (1)

Spudger (1)

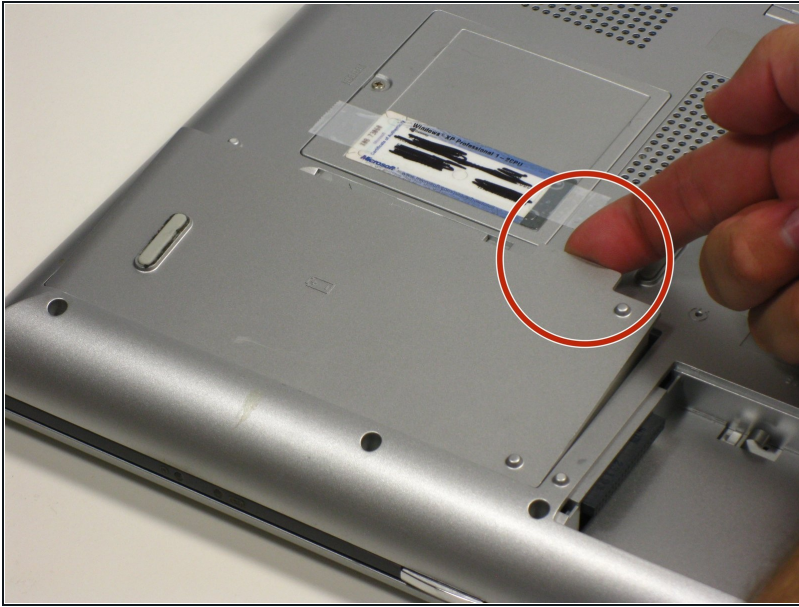
## Step 1 — Battery



- Flip the laptop over.
- Slide the battery release tab to the right with your index finger to open the battery cover.



## Step 2



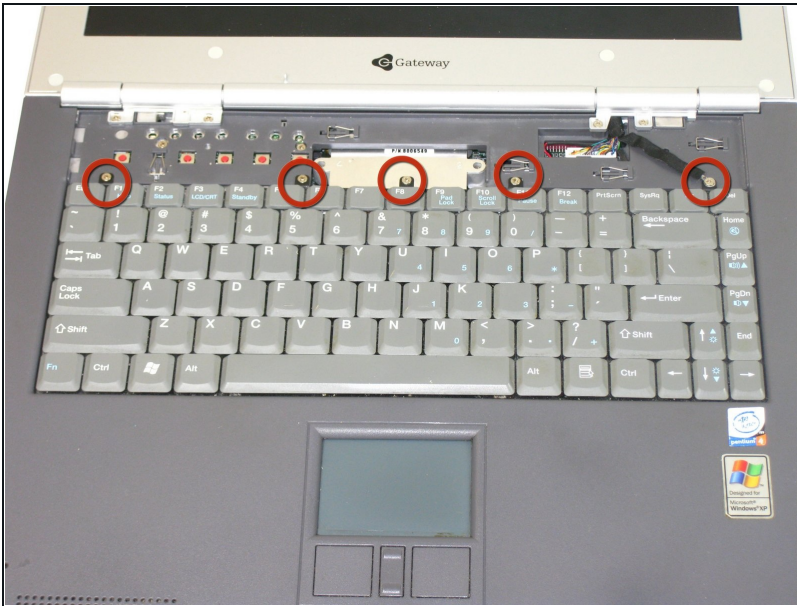
- Remove the battery cover using the tab on the right side.
- Take the battery out with your index finger.

## Step 3 — Power Button Panel



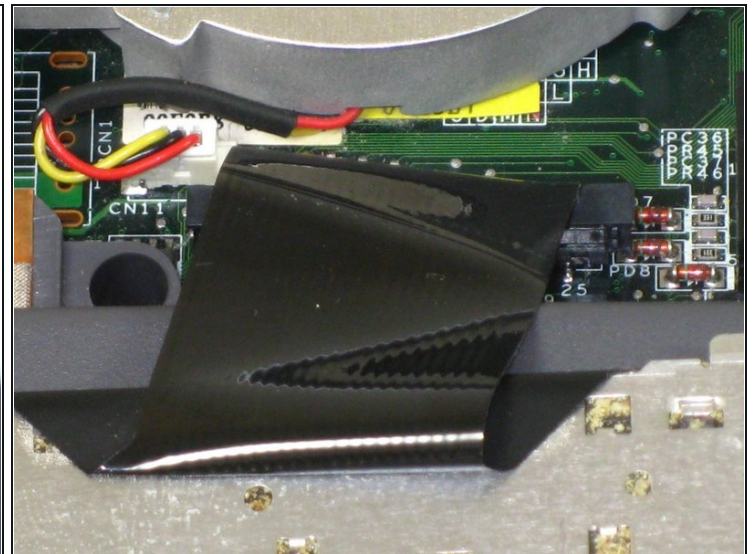
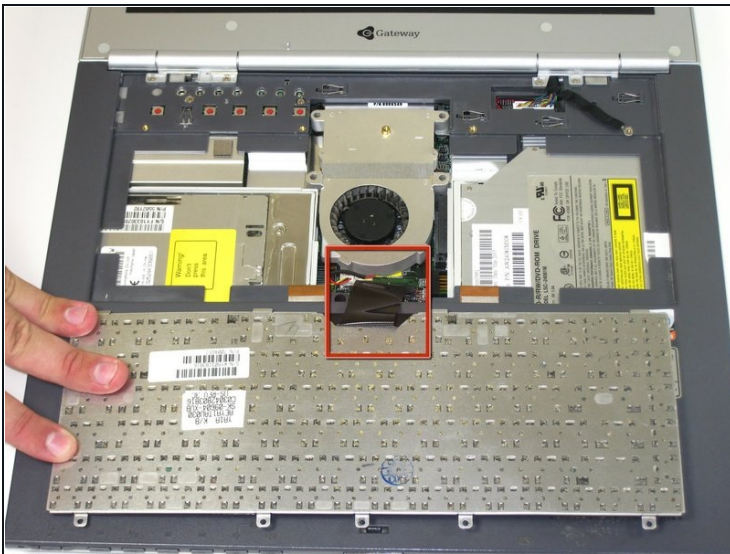
- Insert the spudger between the "sysrq" and "ins" keys.
- Gently pry free the power button panel above the keyboard, beginning from the right and moving to the left.

## Step 4 — Keyboard



- Remove the 5 screws holding the keyboard in place.

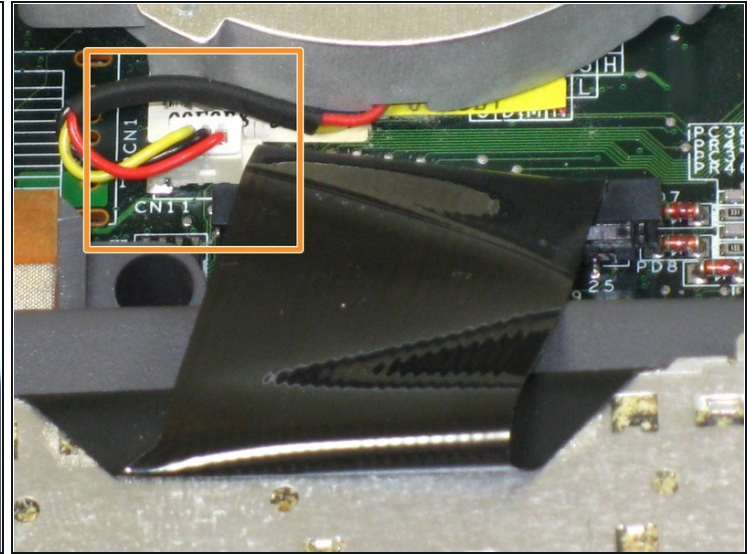
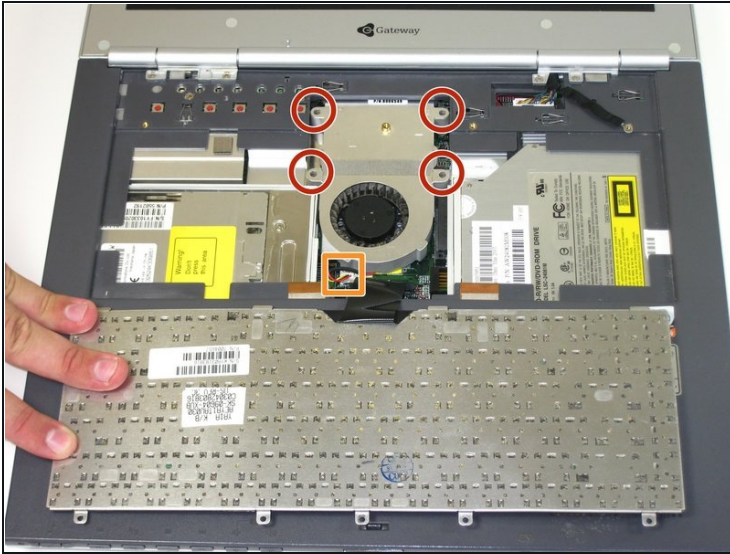
## Step 5



- ⚠ Potential for device damage: When lifting the keyboard out, do not lift the keyboard up. Only fold back along the space bar edge.
- ⚠ Potential for device damage: Do not pull the black cable by the ribbon section. Only pull it from the connector itself.
- Follow the black ribbon cable to the connector and gently pull straight up.

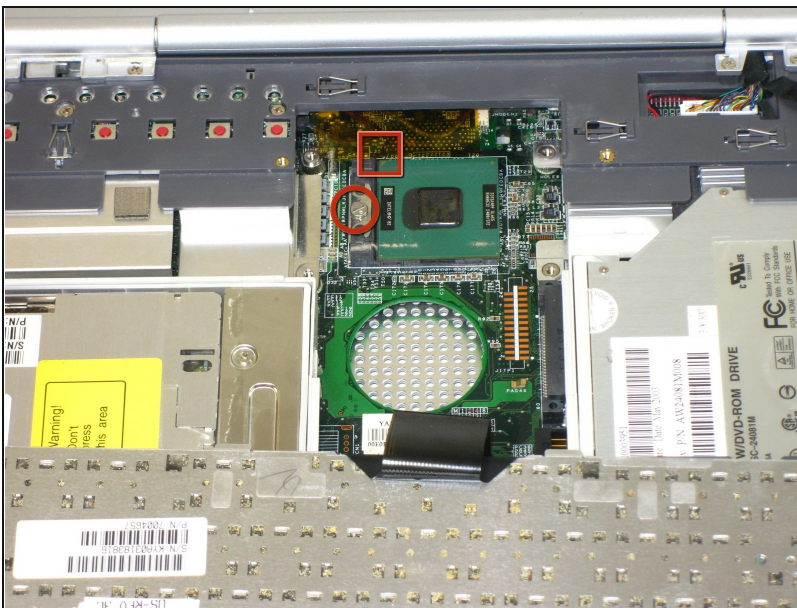


## Step 6 — System Fan



- Unscrew the four captive screws.
- Unplug the fan from the system and pull it out. The fan unit should slide forward before coming free.

## Step 7 — CPU



- Turn screw 1/4 turn to the right.
- ⚠ When reinstalling ensure proper orientation the yellow arrow on CPU should be in upper left corner

To reassemble your device, follow these instructions in reverse order.

