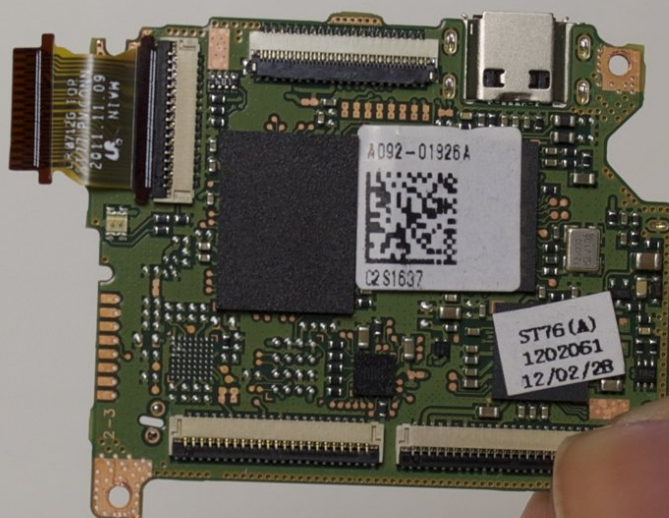




Samsung ST76 Motherboard Replacement

The motherboard contains all of the main circuits and important components necessary to make the device run efficiently. If the logic board is old, faulty, or damaged, this may prevent the camera from working properly.

Written By: Jessica Bain



INTRODUCTION

Use this guide to replace a damaged or broken motherboard.



TOOLS:

- [iFixit Opening Tools](#) (1)
 - [Phillips #00 Screwdriver](#) (1)
-

Step 1 — Back Panel



- Use a Phillips head screwdriver to remove 5 screws from the camera. There are 2 4mm screws on the left side, 2 2mm screws on the right side and 1 4mm screw on the bottom.

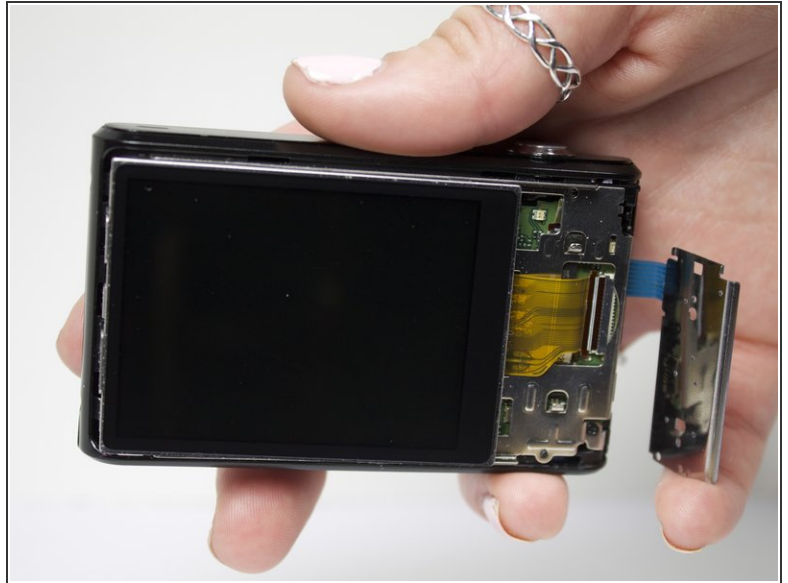
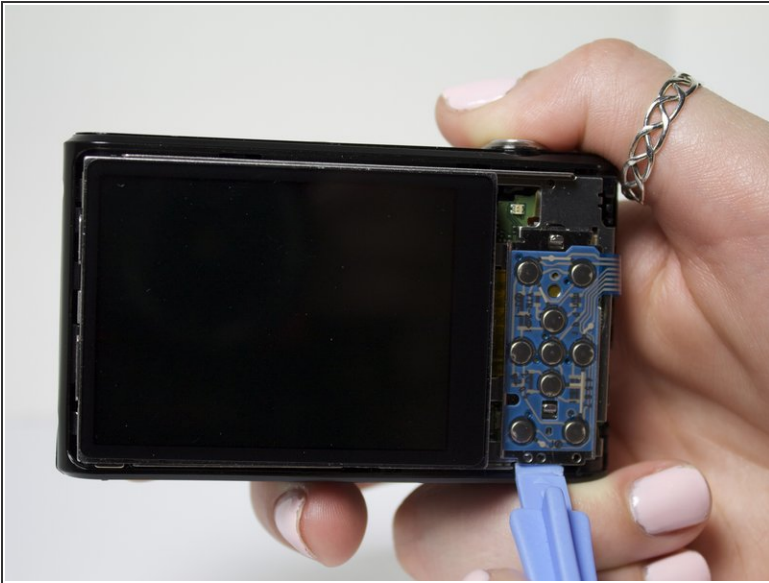
 *Do not mix the 5 screws; they are different sizes.*

Step 2



- Use your fingers to pull the back cover off.

Step 3 — Screen



- Separate the button panel to reveal the port holding the screen on.

✦ *Use a plastic opening tool to help with this task.*

Step 4



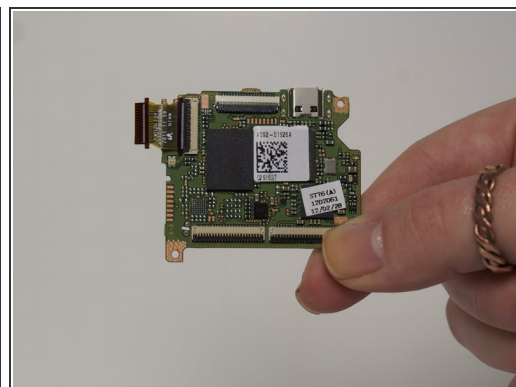
- Remove the yellow cable by pulling gently upwards, away from the inside of the camera, until it separates from its port.

Step 5 — Motherboard




- Remove 2 3mm screws from the metal plate covering the motherboard and lens using a Phillips #00 screw driver.

Step 6



- Remove the 4 cables connecting the motherboard to the camera body.

 *Use a plastic opening tool to help with this task.*

To reassemble your device, follow these instructions in reverse order.