



# Toshiba Satellite C55D-A5201 Key Replacement

Replace a broken key in a few simple steps.

Written By: Andrea Colindres



---

## INTRODUCTION

This guide teaches you how to replace a broken key.

---

### **TOOLS:**

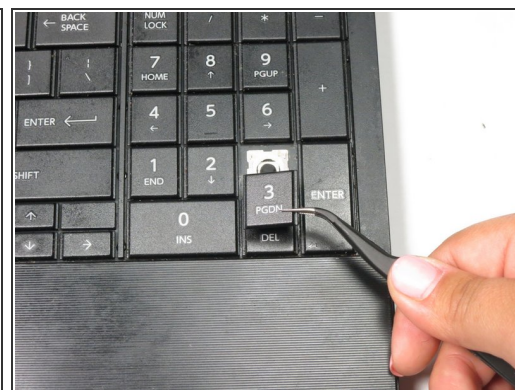
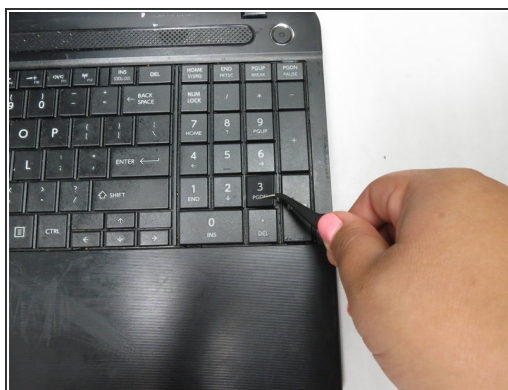
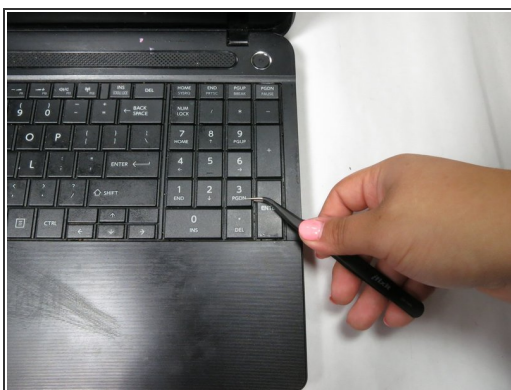
- [Tweezers](#) (1)
-

## Step 1 — Key



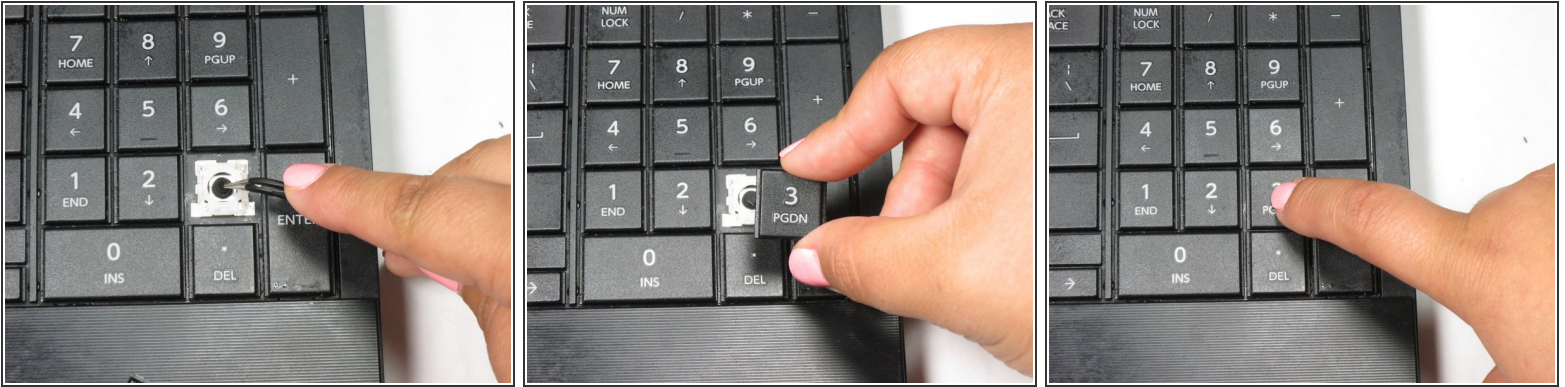
- Turn off the laptop, and keep it open.

## Step 2



- With tweezers, grab the broken key by its right side.
- Pull the broken key to the left.

## Step 3



- With tweezers, press down on the black key holder until you hear a slight popping sound.
- With your finger, press the new key onto the holder until it clicks in.