

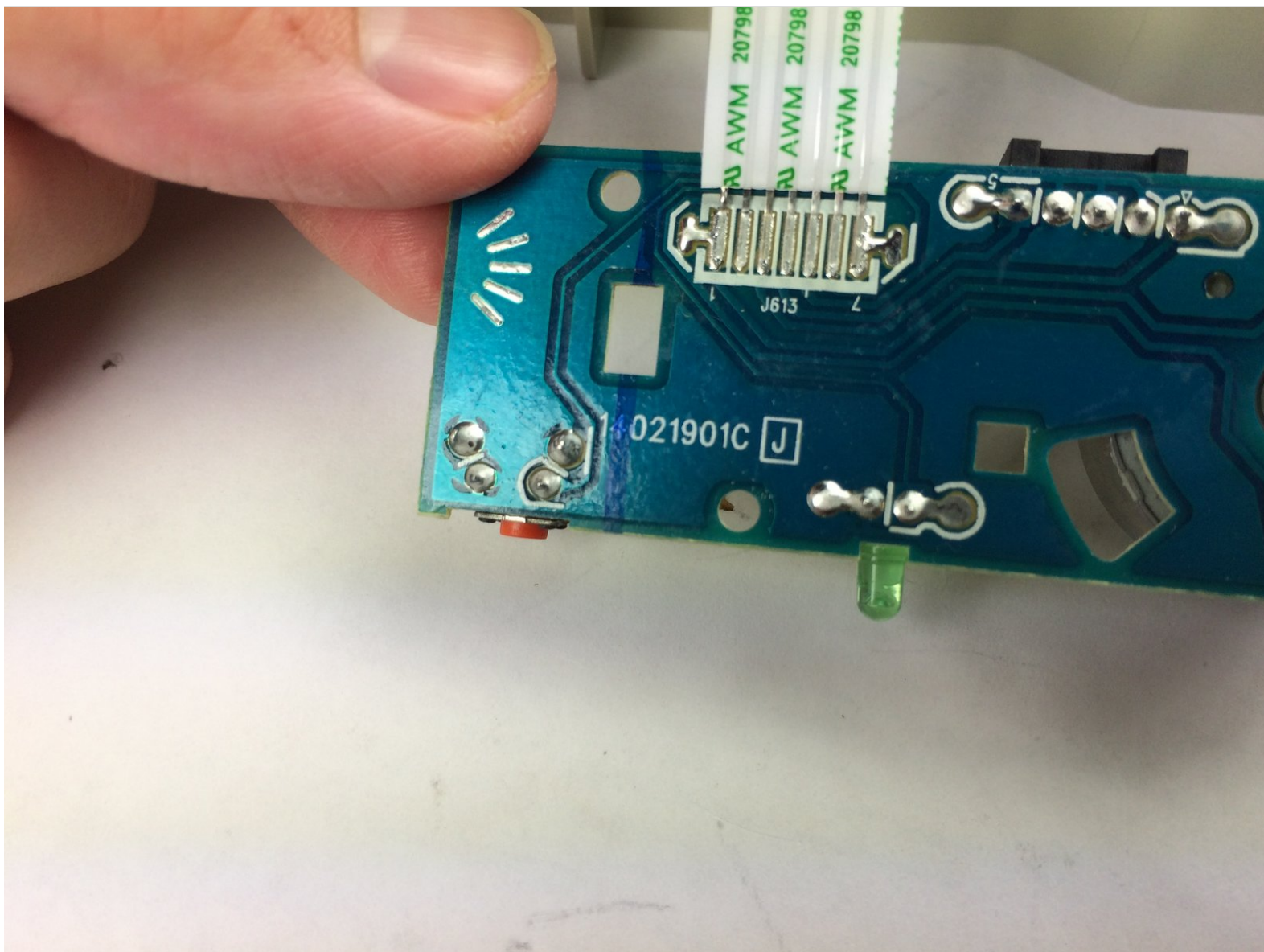


Lite-On iHAS324 Eject Button and Power LED Light Replacement

Reasons to replace the eject button include: the disc is not ejecting or the eject button is stuck.

Reasons to replace the power LED light include: the light has gone out or the owner wishes to perform a light modification.

Written By: Kayla Culpepper





TOOLS:

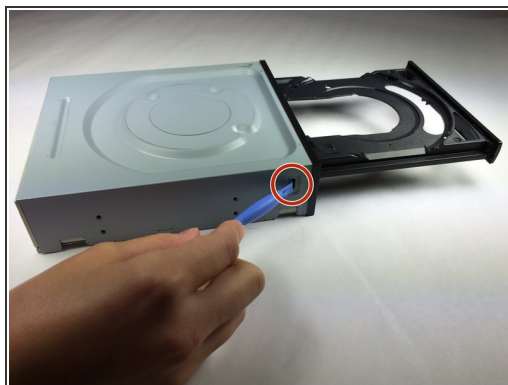
- [Paper Clip](#) (1)
- [Phillips #2 Screwdriver](#) (1)
- [iFixit Opening Tools](#) (1)
- [Tweezers](#) (1)
- [Portable Soldering Iron](#) (1)
- [Desoldering Braid](#) (1)

Step 1 — Chassis



- Insert a paper clip into a small hole on the right side of the faceplate below the disc tray.
 - ⓘ There may be resistance, do not be afraid to use force.
- The tray should then pop open.
- Pull out the tray so that it is fully extended.

Step 2



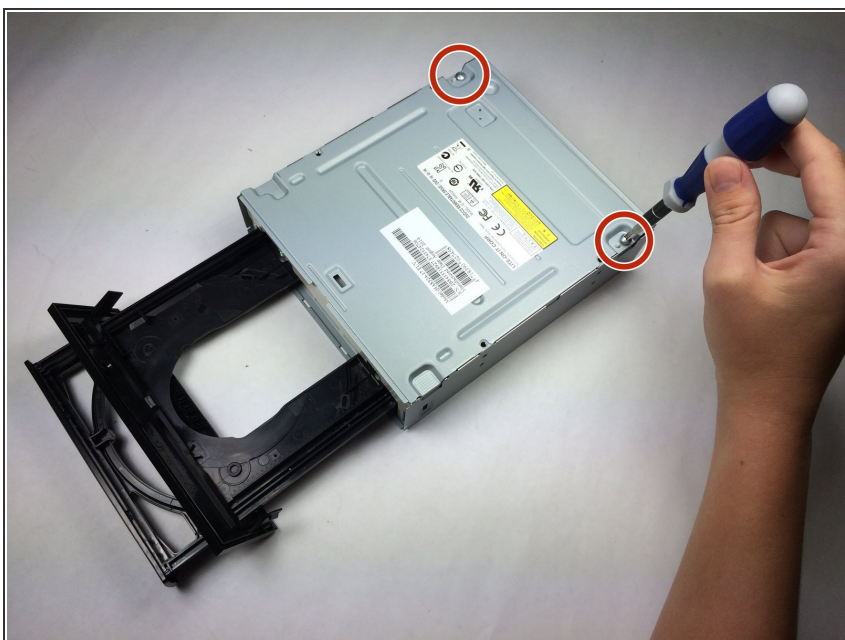
- Use a plastic opening tool to push the three tabs located on the right, left, and bottom side of the outer chassis to loosen the faceplate off.

Step 3



- Pull the faceplate off the chassis.
- ⚠ Do NOT pull the faceplate all the way off the disc tray, because doing so can cause damage to the faceplate.
- ⓘ There may be resistance, do not be afraid to use force.

Step 4



- Using the Phillips Head #2 screwdriver, unscrew the two 8.5 mm screws located on the bottom back of the chassis.

Step 5



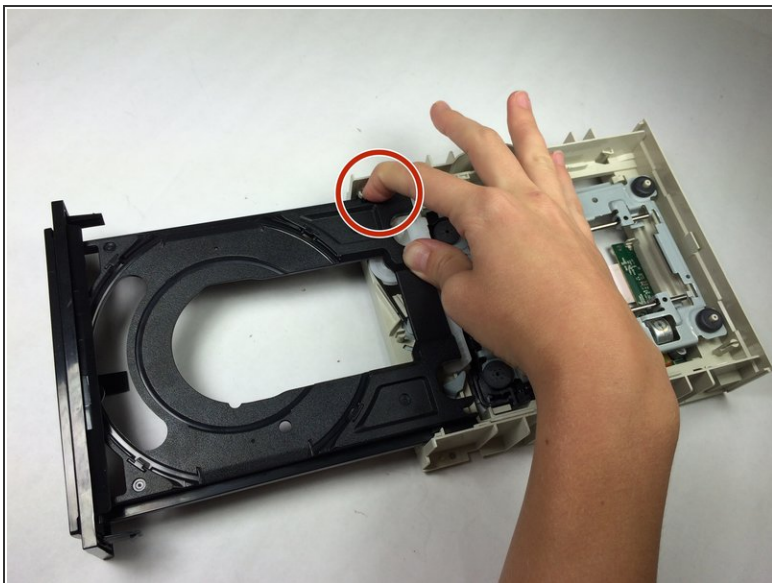
- Remove the bottom plate by lifting it off the device.

Step 6



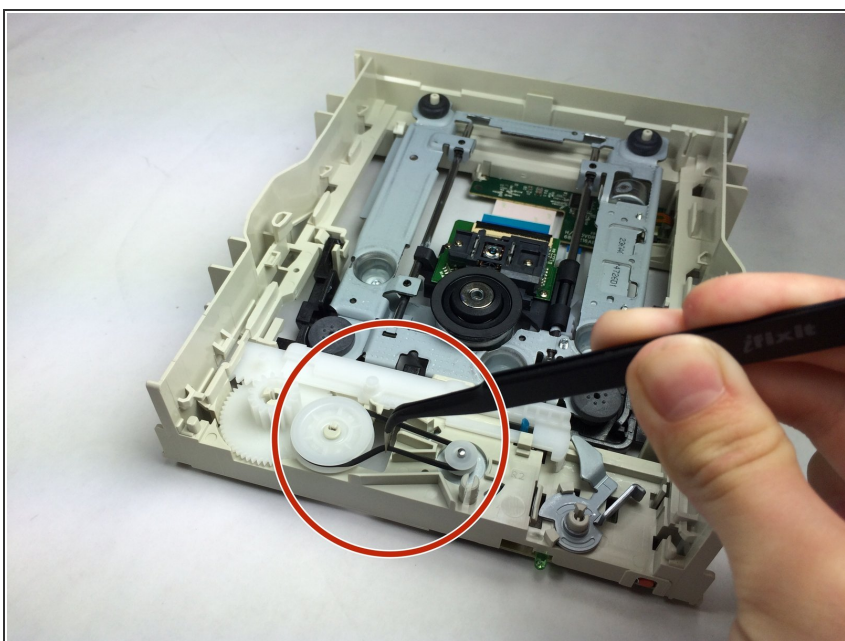
- Turn the device over.
- Remove the top plate by pulling the sides and lifting the plate off.

Step 7 — Disc Tray



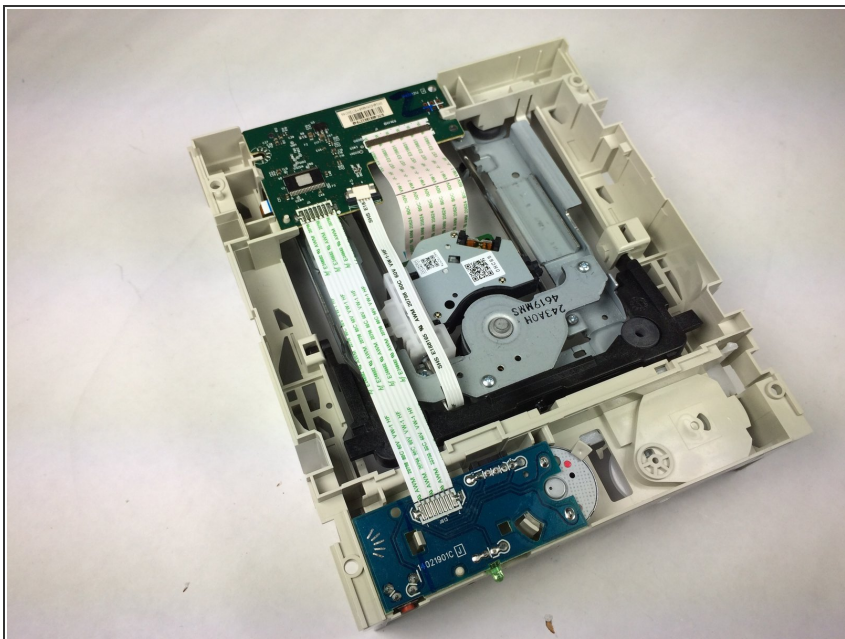
- Push the left tab in and slide the tray out on the left side.
- Pull the gray plastic casing on the right side away from the tray.
- Slide the right side of the tray out.

Step 8 — Disc Tray Belt



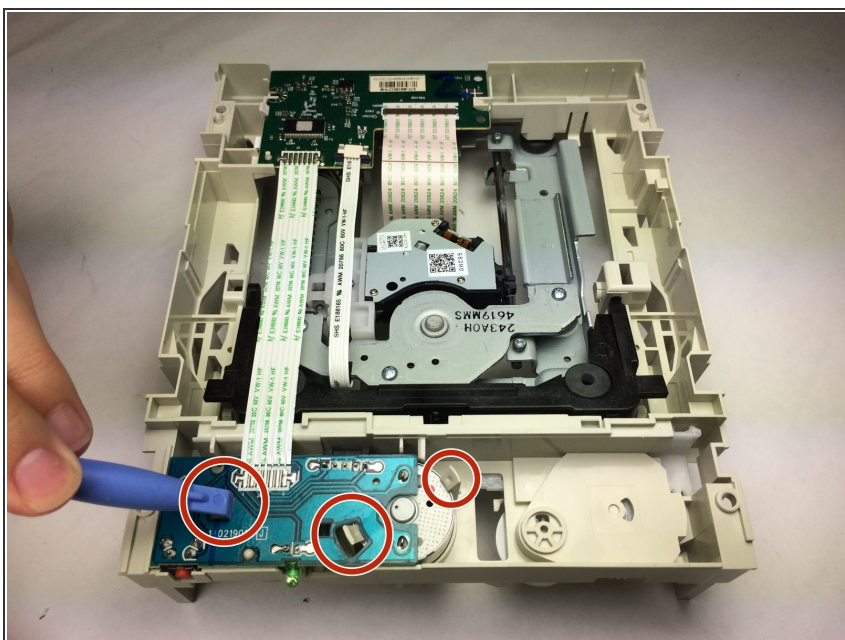
- Take tweezers and remove the black tray belt from the gears carefully.

Step 9 — Eject Button and Power LED Light



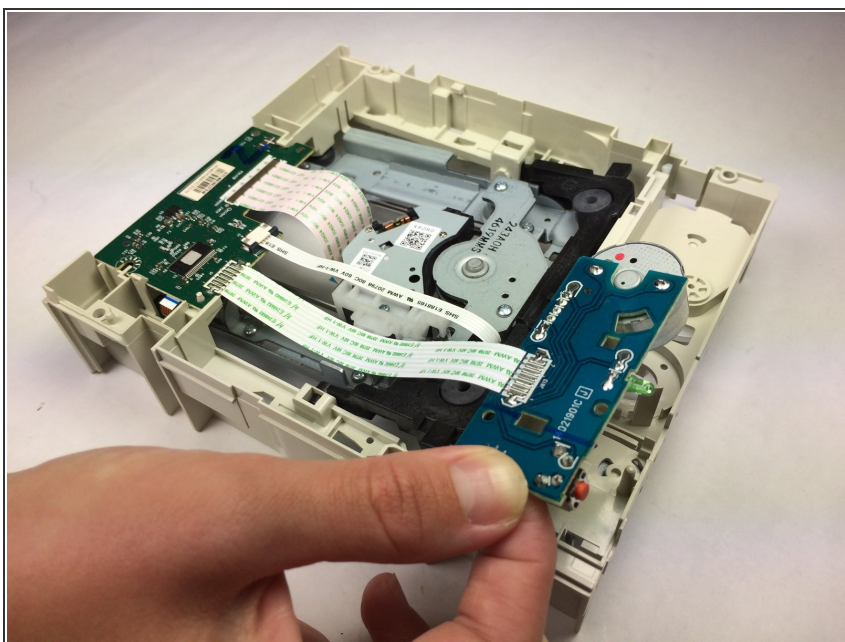
- Flip the device over.

Step 10



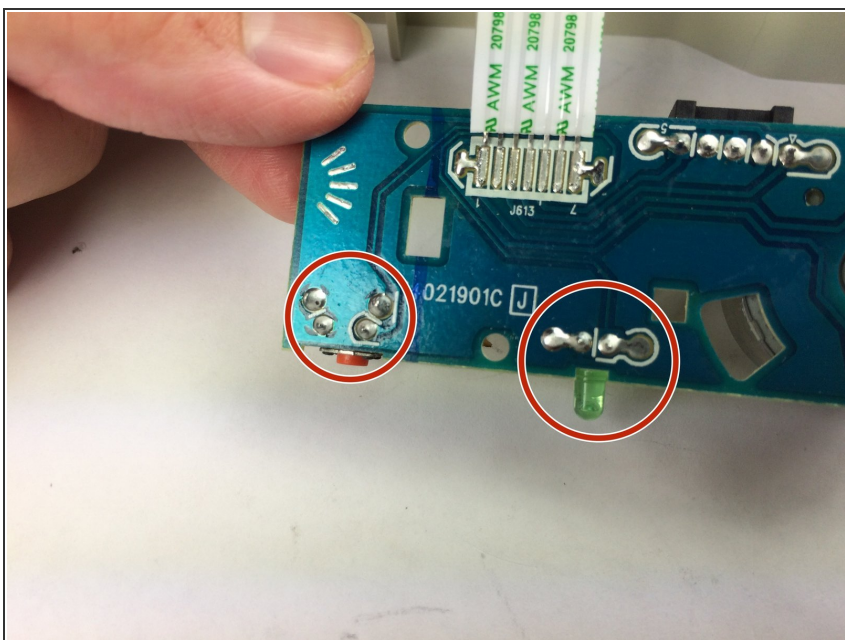
- Use a plastic opening tool to pull all three tabs, lifting up the circuit board as you go.

Step 11



- Carefully lift the circuit board out of the plastic casing.

Step 12



- Using a solder wick, unsolder either the eject button or Power LED Light. [Soldering Guide](#)
- Then, using a solder iron, replace them.

To reassemble your device, follow these instructions in reverse order.