



# Coby Kyros MID9042 Camera Replacement

This guide is provided to those who may need...

Written By: Samantha Rollings



# INTRODUCTION

This guide is provided to those who may need assistance on replacing their camera for a "Coby Kyros MID9042" tablet. Replacing the camera on a Coby Kyros MID9042 can be challenging but before you begin, make sure you have the necessary tools, a replacement camera, and a clean, well-lit workspace. Here's a step-by-step guide to help you through the process. Remember to exercise caution throughout the process, and if you encounter any difficulties, consult the device's user manual or seek assistance.

---

## TOOLS:

Phillips #0 Screwdriver (1)

Tweezers (1)

iFixit Opening Tool (1)

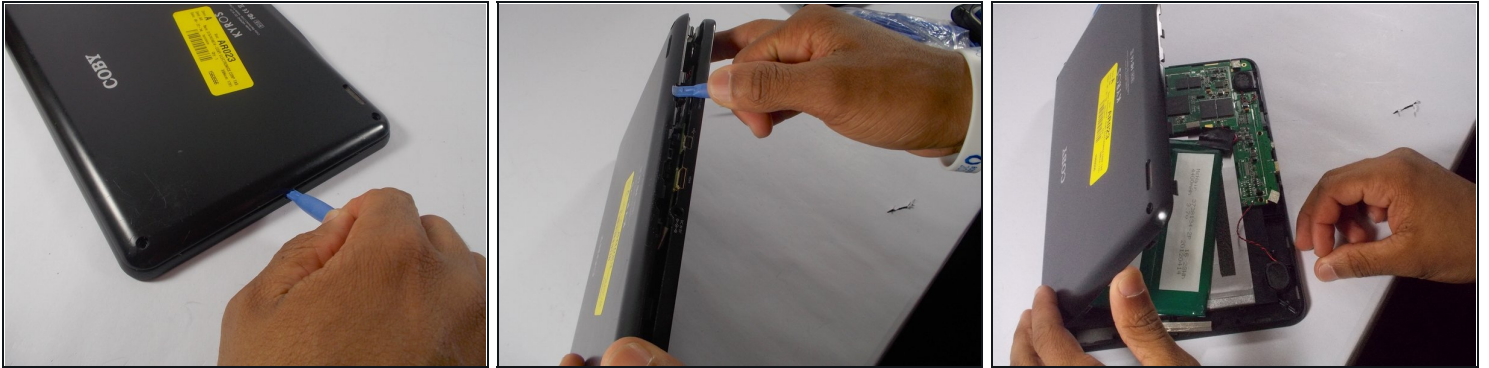
---

## Step 1 — Camera



- ① Before removing anything from the tablet, make sure to power off the device.
- After powering off device, remove the anti-slip pads from all 4 corners on the back of the device.
- Once slip pads are removed, proceed to unscrewing the four 3.2 mm Phillips #0 screws from the back cover.

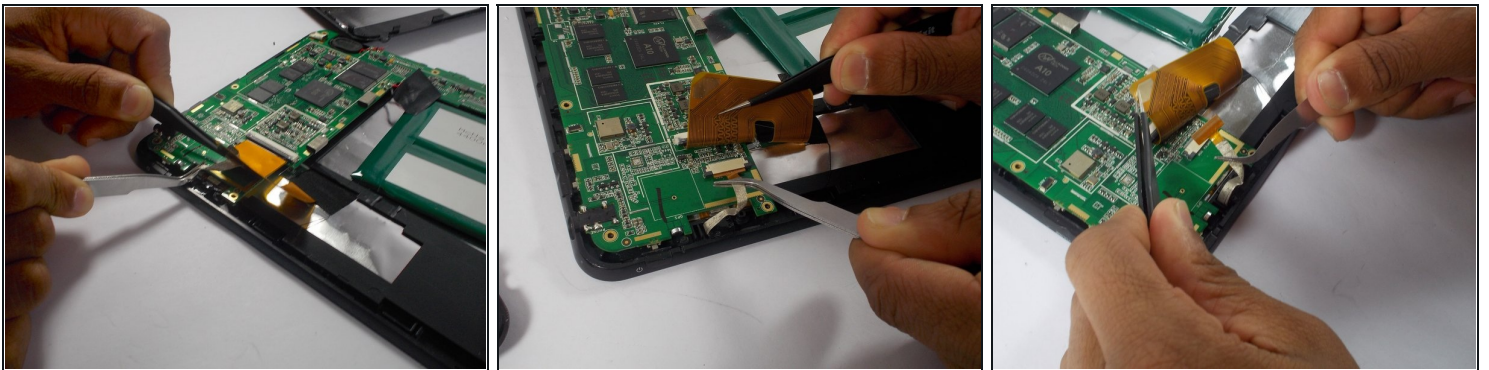
## Step 2



⚠ When removing the back cover, be careful not to break the inner plastic tabs.

- Use the blue plastic opening tool to wedge the back cover apart from the front.
- Once the edges are wedged apart, use hands to lift up the back of the tablet.

## Step 3



- Locate the gold flap and use tweezers to lift the flap up.
- Use a second pair of tweezers to pull the gold tab connected to the camera out of the circuit board.
- Once the tab is removed from the circuit board, pull the camera out of the tablet.

⚠ Caution! Be sure to avoid pulling the gold flap off the the circuit board.

---

To reassemble your device, follow these instructions in reverse order.