



Toshiba Satellite C55D-A5201 Keyboard Replacement

This guide teaches you how to remove your...

Written By: Kari Byrd



INTRODUCTION

This guide teaches you how to remove your keyboard. Reverse the steps to replace with a new keyboard.

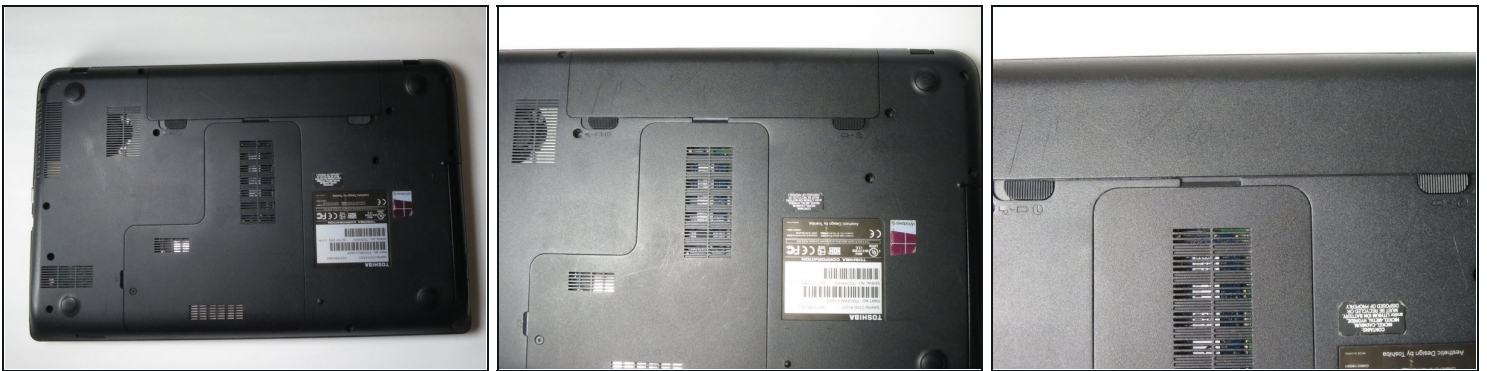
TOOLS:

[iFixit Opening Tool](#) (1)
[Tweezers](#) (1)
[Phillips #00 Screwdriver](#) (1)

PARTS:

[Toshiba Satellite C55D-A5201 Keyboard](#)
(1)

Step 1 — Battery



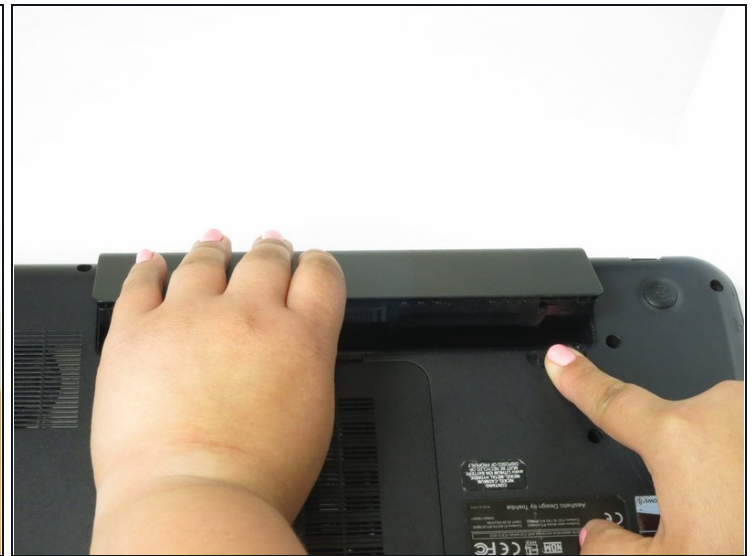
- Close the laptop, and flip it upside down. You want the spine to be furthest away from you.

Step 2



- Release the locking mechanism by switching the left slider to the left.

Step 3



- Slide the right slider to the right, and simultaneously, pull the battery out at a diagonal angle.

Step 4 — Keyboard



- Remove the 3mm Phillips #00 screw holding the keyboard in place.

Step 5



- Flip over and open the laptop.

Step 6



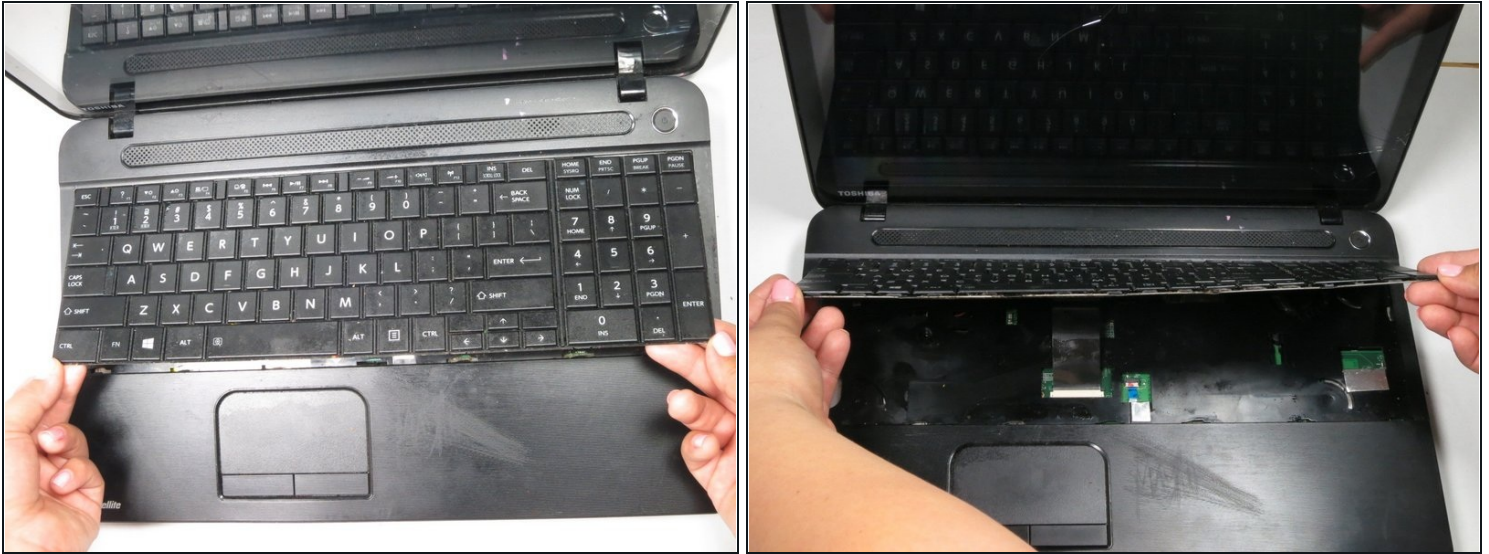
- Slip the plastic opening tool under the "Enter" key on the right corner of the keyboard.
- Lift the plastic opening tool up until the corner of the keyboard is detached.
- ① You will hear a popping sound as each portion of the keyboard becomes detached.

Step 7



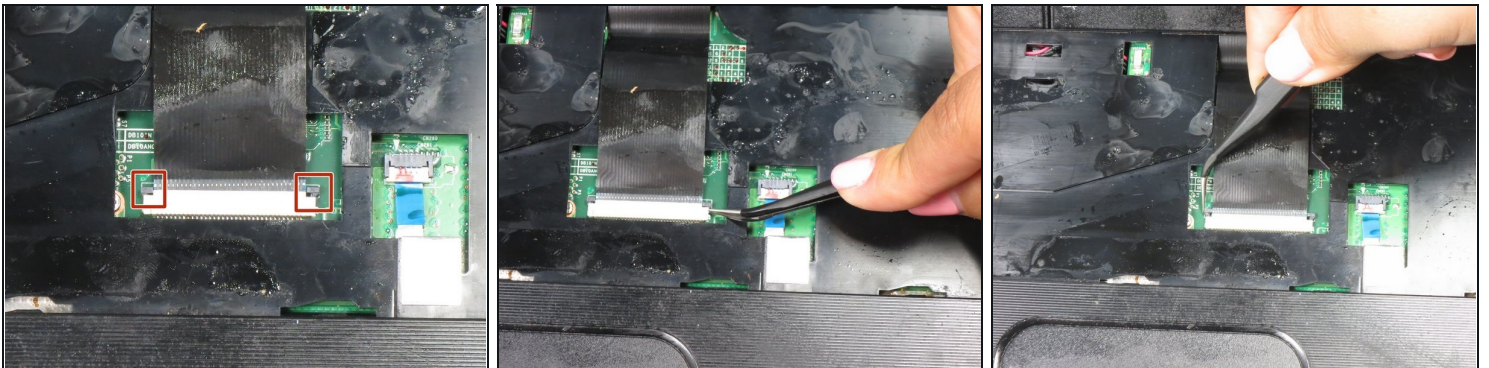
- Slide the plastic opening tool slowly along the bottom of the keyboard towards the left.
- Continue up the left side of the keyboard.

Step 8



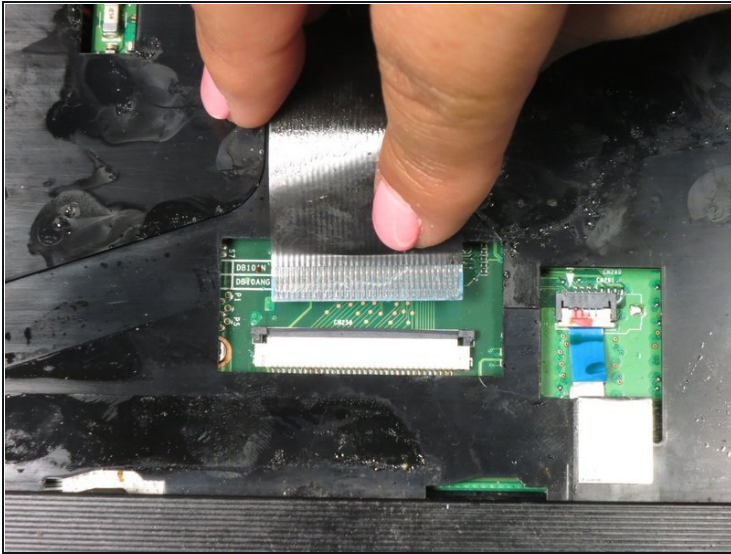
- Lift the keyboard up by grabbing it on both sides.
- Set the keyboard against the laptop screen.

Step 9



- Using [tweezers](#), push up the two black switches on either side of the ZIF connector.

Step 10



- Pull out the ZIF connector to release the keyboard.
- Lift up the keyboard.

To reassemble your device, follow these instructions in reverse order.