



Shark Navigator Roller Brush Replacement

Replace the roller brush on your Shark Navigator.

Written By: Jeremiah Shyne



INTRODUCTION

This guide will walk you through how to replace the roller brush.

TOOLS:

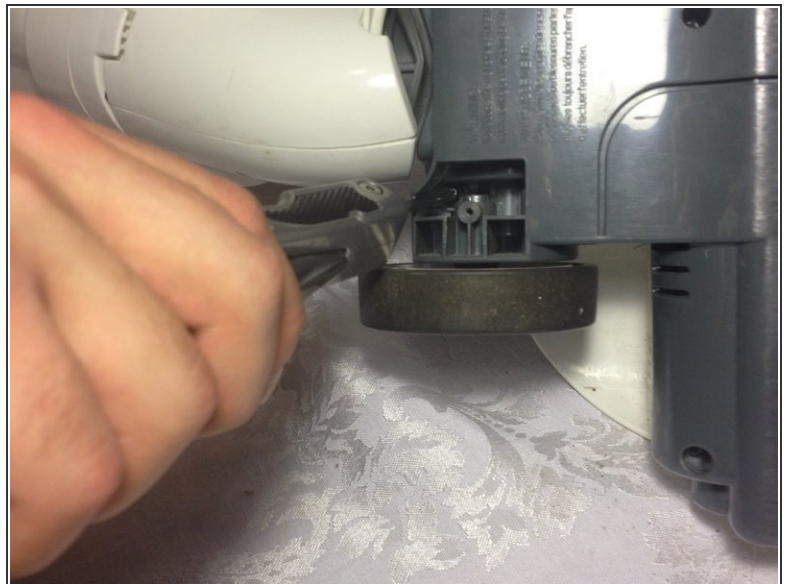
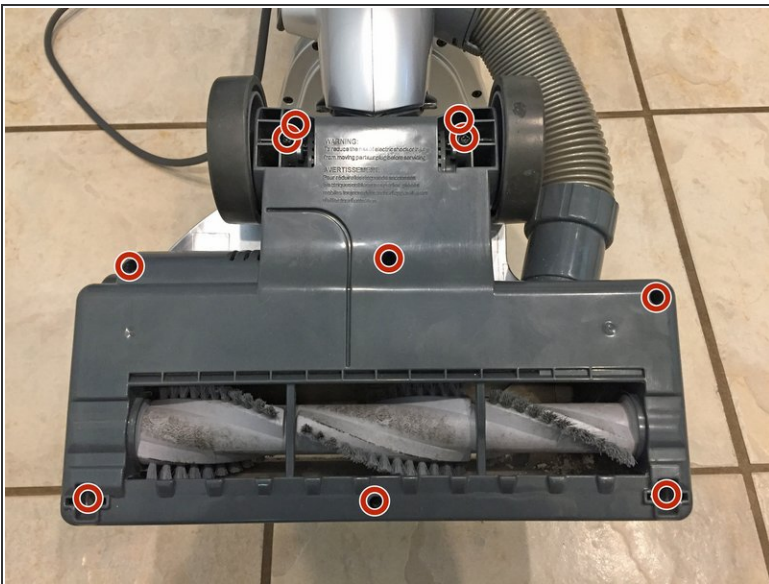
- [6-in-1 Screwdriver](#) (1)
 - [Phillips #2 Screwdriver](#) (1)
-

Step 1 — Roller Brush Compartment



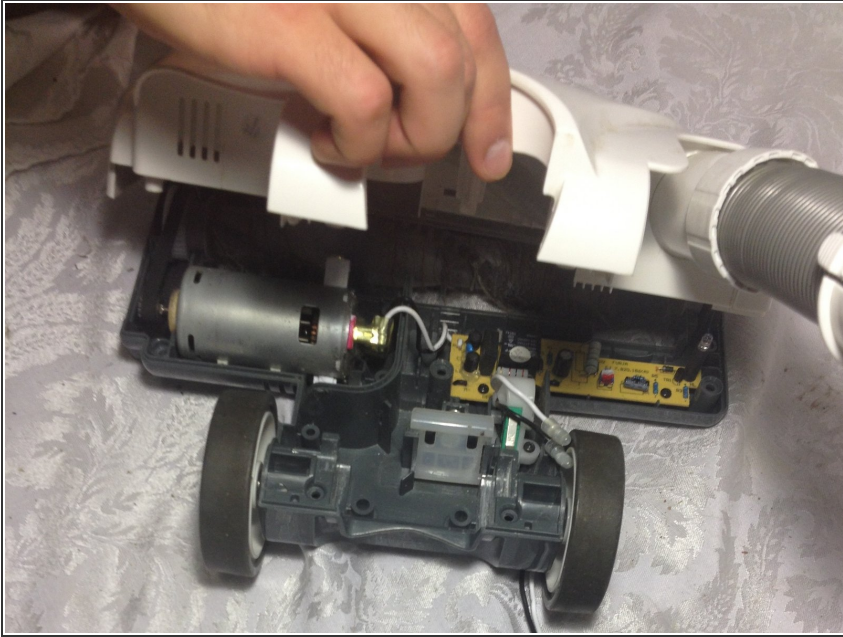
- Pop out the two small wheels located on the front end of the bottom of the roller brush compartment.

Step 2



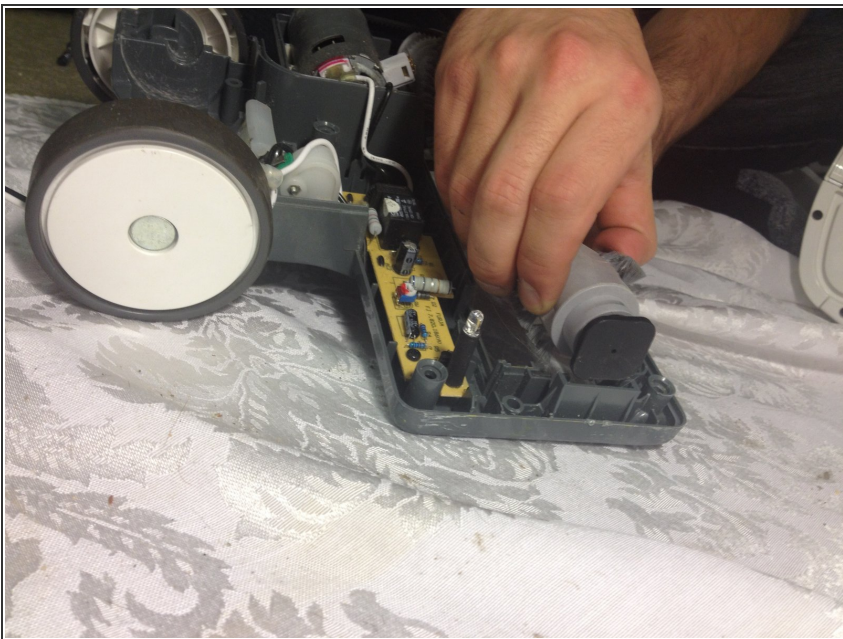
- Remove the 10 Phillips screws located on the bottom of the roller brush compartment. (Two of these screws are located under the wheels from the previous step.)
 - ☑ The screws have varying lengths, so keep track of where each one goes for reassembly.

Step 3



- Remove the white plastic cover to expose the roller compartment underneath.

Step 4 — Roller Brush



- Lift the roller brush out of its holders.

To reassemble your device, follow these instructions in reverse order.