



# MacBook Air 13" Early 2015 Display Assembly Replacement

Use this guide to replace a faulty or broken...

Written By: iRobot



# INTRODUCTION

Use this guide to replace a faulty or broken display on your MacBook Air 13" Early 2015.

[video: <https://www.youtube.com/watch?v=kyrljFnByPY>]



## TOOLS:

- [P5 Pentalobe Screwdriver Retina MacBook Pro and Air](#) (1)
- [T5 Torx Screwdriver](#) (1)
- [TR8 Torx Security Screwdriver](#) (1)
- [Spudger](#) (1)



## PARTS:

- [MacBook Air 13" \(Mid 2013 to 2017\) Display Assembly](#) (1)

## Step 1 — Lower Case



- **i** Before proceeding, power down your MacBook. Close the display and lay it on a soft surface, top-side down.
- Use a [P5 Pentalobe](#) driver to remove ten screws securing the lower case, of the following lengths:
  - Two 9 mm screws
  - Eight 2.6 mm screws

## Step 2



- Wedge your fingers between the display and the lower case and pull upward to pop the lower case off the Air.
- Remove the lower case and set it aside.

## Step 3 — Battery Connector



-  To ensure that everything is de-energized and won't turn on while you're working, it is recommended that you disconnect the battery.
- Grab the clear plastic pull tab attached to the battery connector and pull it parallel to the board toward the front edge of the Air.
-  Do not lift upward on the connector as you disconnect it or you risk damage to the connector socket.



## Step 4 — I/O Board Cable



- Use the flat end of a spudger to pry the I/O board cable connector up out of its socket on the I/O board.

## Step 5



- Carefully peel the I/O board cable from the adhesive securing it to the top of the fan.
- ★ During reassembly, make sure this cable is in the correct orientation. It will fit if reversed, but the laptop will not boot.

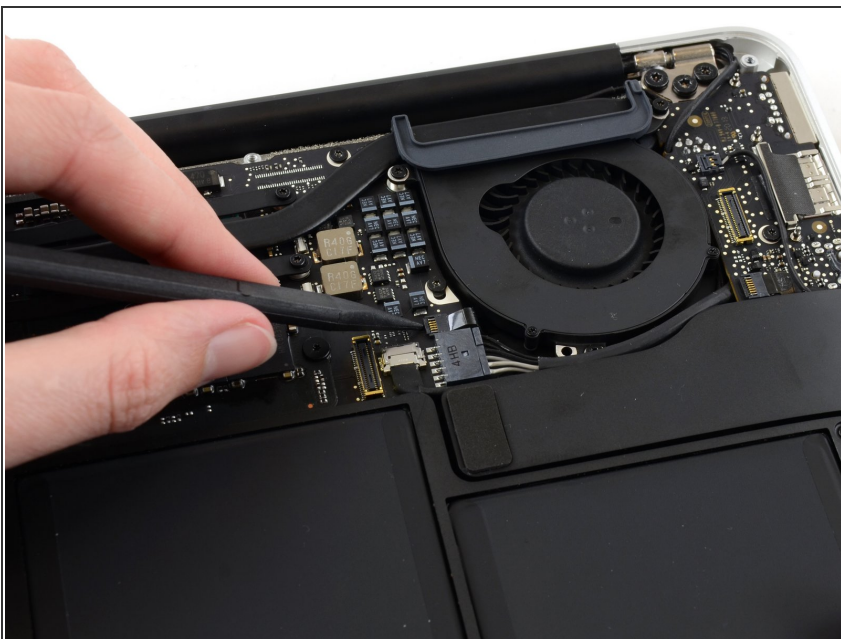
## Step 6




 The following connector has an especially deep socket. Use care when disconnecting it.

- While gently pulling the I/O board cable upward near its connection to the logic board, use the flat end of a spudger to pry up on alternating sides of the connector to help "walk" it out of its socket.
- Remove the I/O board cable.

## Step 7 — Fan



- Use the tip of a spudger to carefully flip up the retaining flap on the fan cable ZIF socket.

 Be sure you are prying up on the hinged retaining flap, **not** the socket itself.

## Step 8



- Peel the rubber gasket off the adhesive on the top of the fan.

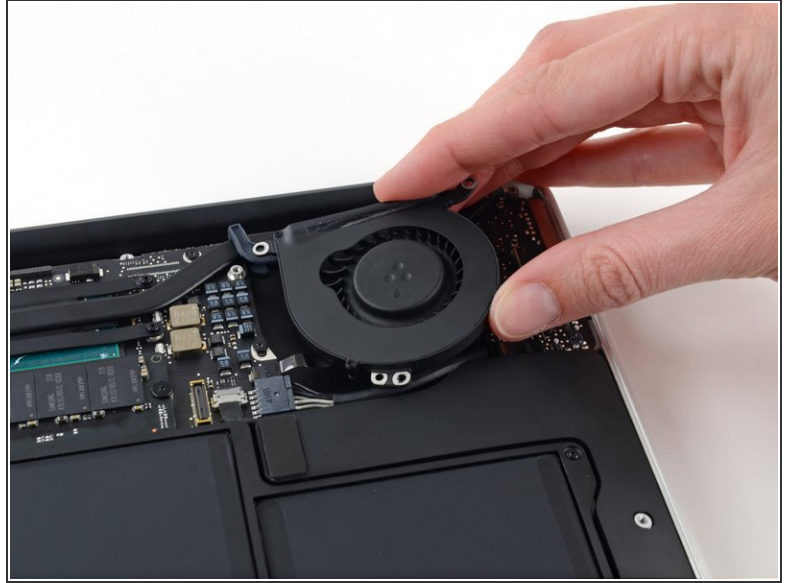
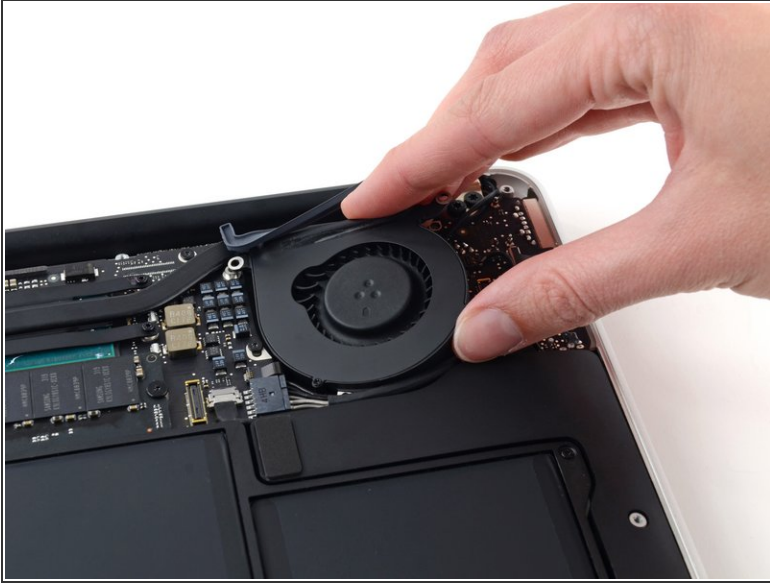
## Step 9



- Remove the following three screws securing the fan to the upper case:
  - One 5.2 mm T5 Torx screw
  - One 3.3 mm T5 Torx screw
  - One 4.4 mm T5 Torx screw with a short head



## Step 10



- Lift the fan from the I/O board side and pull it free from the upper case.
- Removing the fan will also disconnect the fan ribbon cable. Be careful not to snag it.

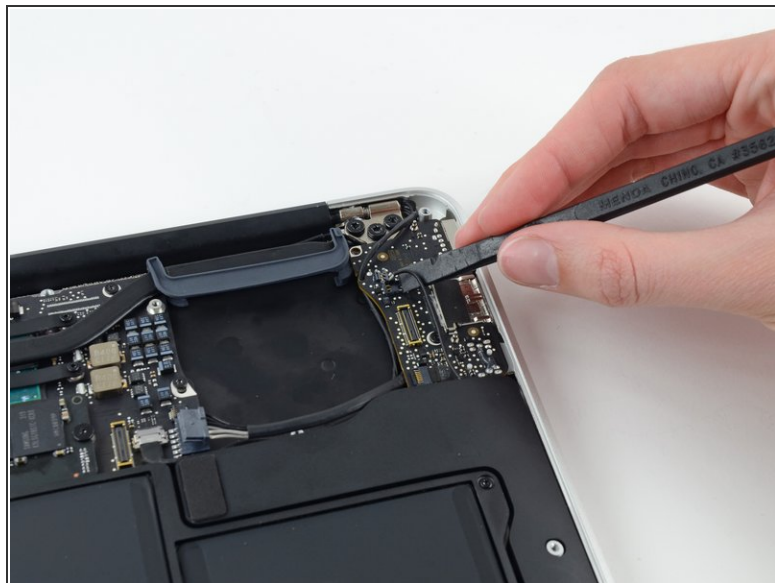
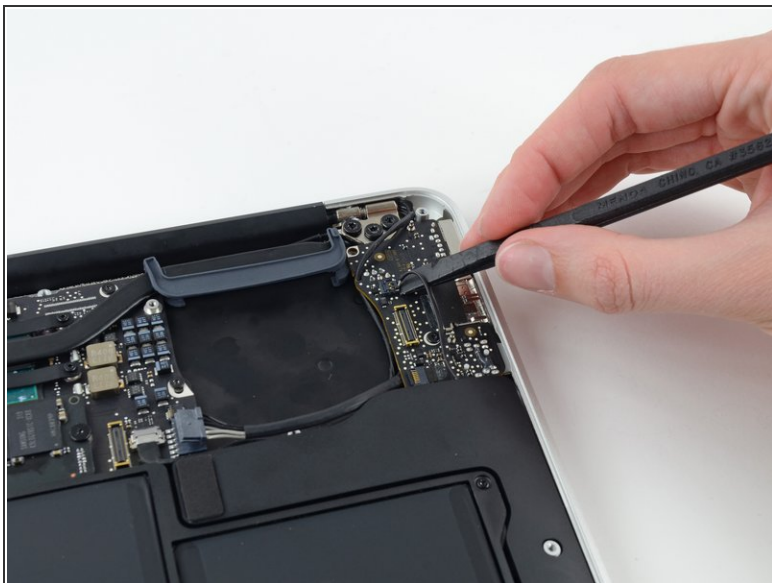
## Step 11 — I/O Board



- Disconnect the I/O board by pulling its power cable away from its socket on the logic board.
- ⓘ Pull the cable parallel to the face of the logic board toward the right edge of the Air.



## Step 12



- Use the flat end of a spudger to pry the left speaker cable connector up and out of its socket on the I/O board.
- ⓘ Pry up from beneath the wires.

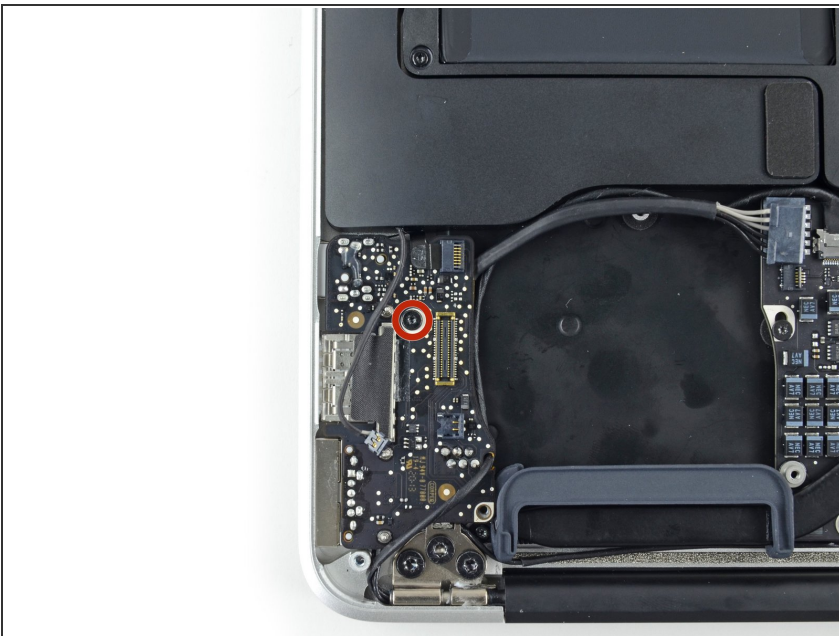
## Step 13



- Use the tip of a spudger to carefully flip up the retaining flap on the microphone ribbon cable ZIF socket.

⚠ Make sure you are flipping up the retaining flap, **not** the socket itself.

## Step 14



- Remove the single 4.1 mm T5 Torx screw securing the I/O board to the upper case.

## Step 15



- Gently de-route the camera cable from its notch on the I/O board and push it out of the way with the tip of a spudger.

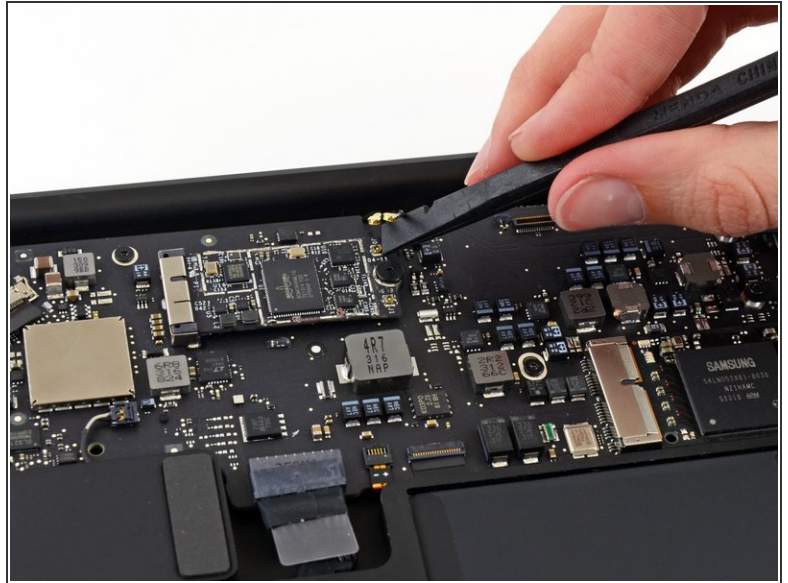
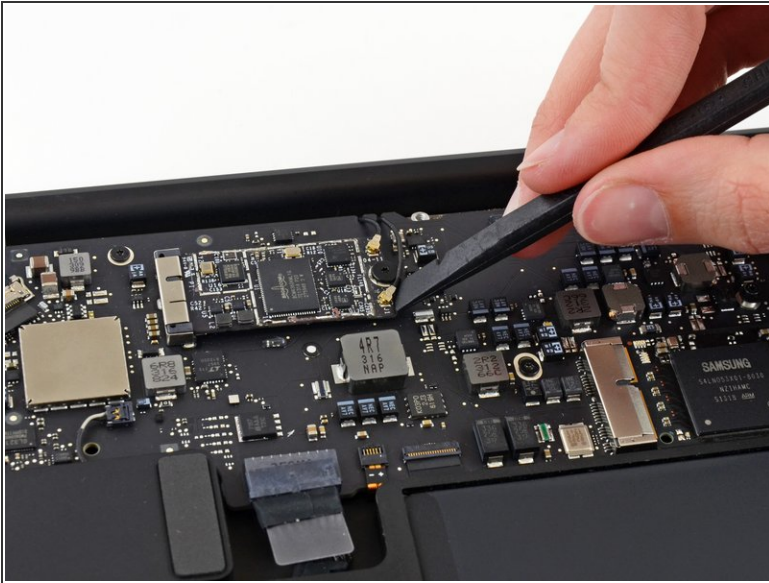
## Step 16



- Lift the I/O board from the logic board side and pull it free from the upper case.
- Removing the I/O board will also disconnect the microphone ribbon cable. Be careful not to snag it.

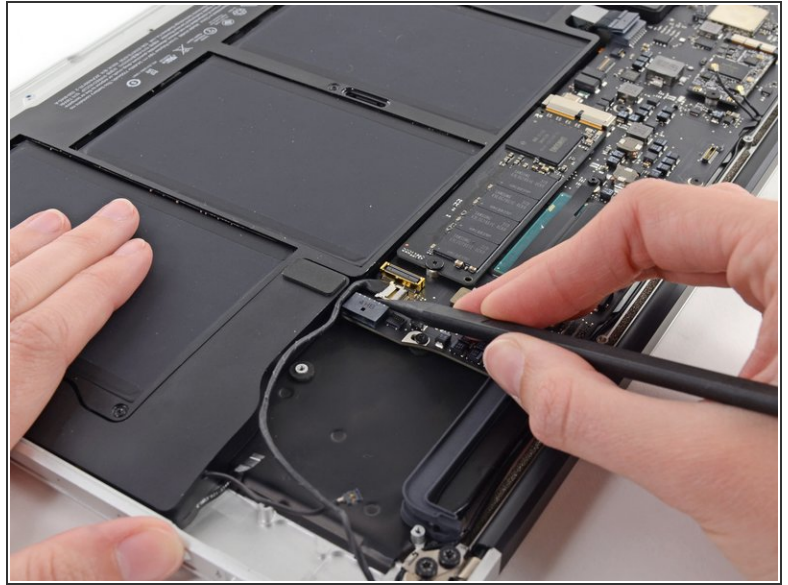
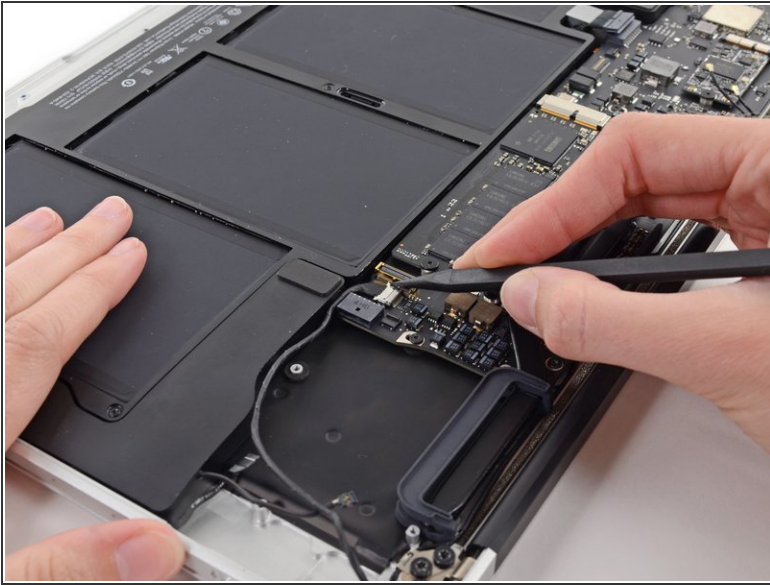


## Step 17 — Display Assembly



- Use the flat end of a spudger to pry each of the antenna connectors up from their sockets on the AirPort/Bluetooth card.

## Step 18

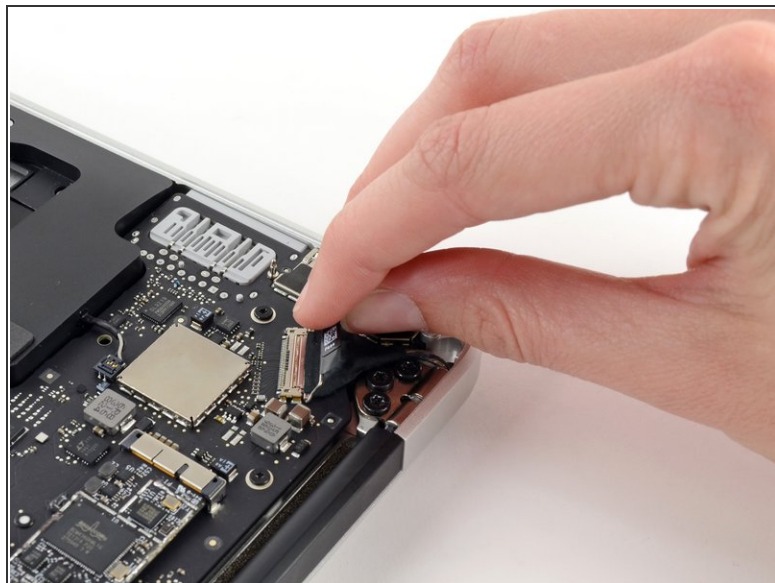
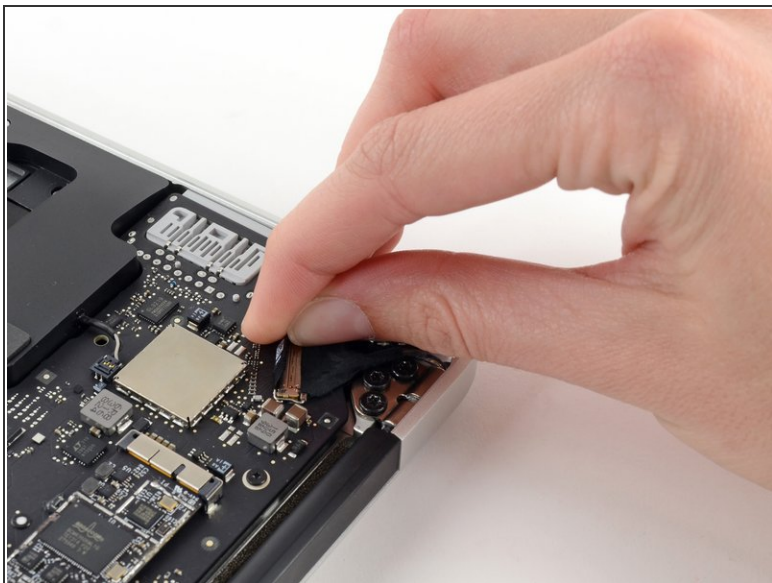


- Disconnect the camera cable connector with the tip of a spudger.
- ⓘ Push first on one side of the connector, then on the other side to carefully "walk" it out of its socket.
- Pull the camera cable parallel to the face of the I/O board toward the front edge of the Air to disconnect it from its socket.

**⚠ Do not lift upward on this cable as you disconnect it, as its socket may break off the logic board.**

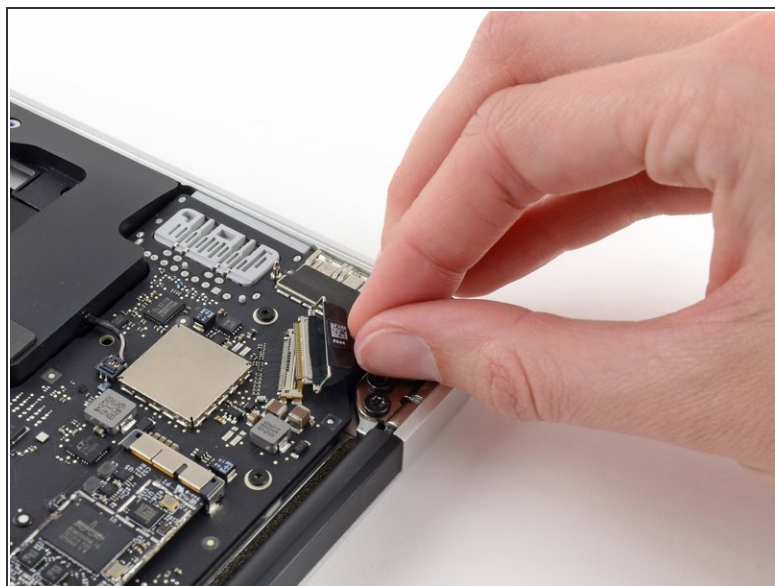
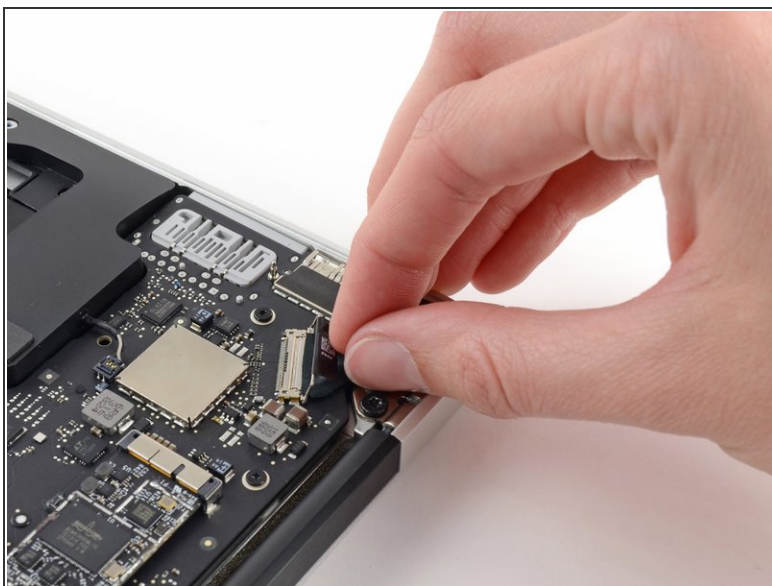


## Step 19



- Pull the plastic tab on the display data cable connector to unlock it.

## Step 20

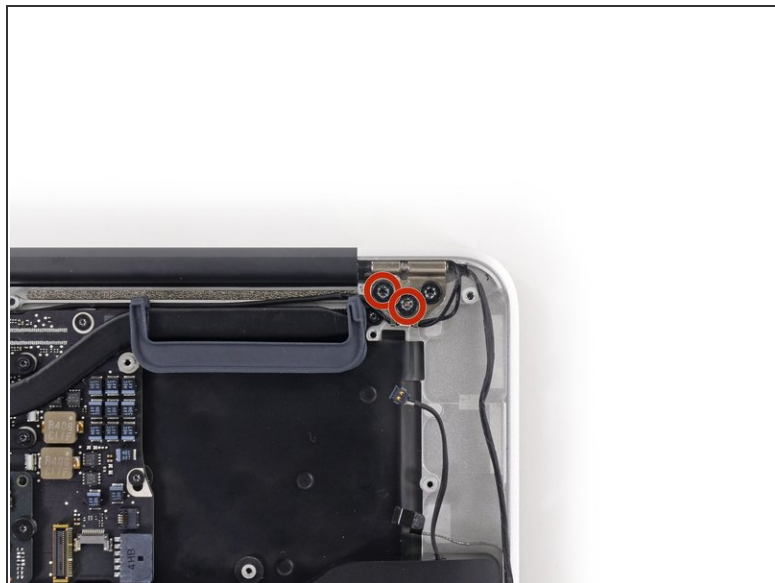
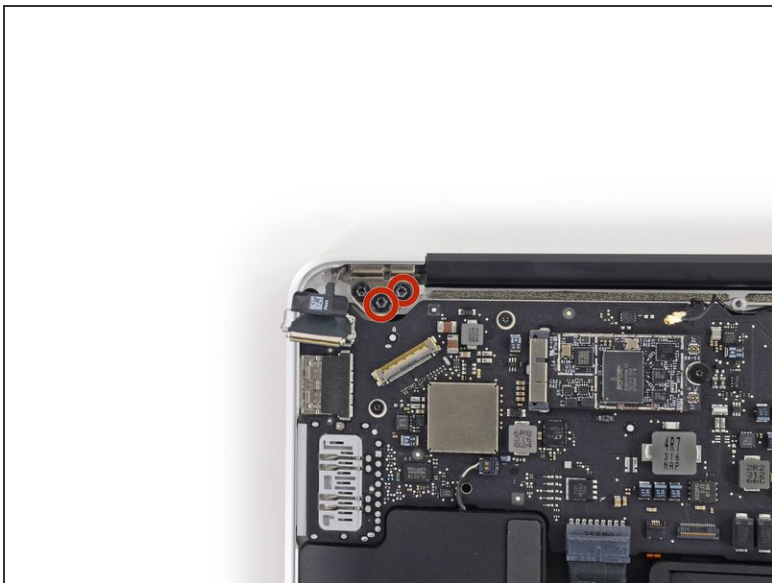


- Pull the display data cable connector straight out of its socket.

 Make sure to pull the connector parallel to the logic board, **do not** lift straight up from its socket.



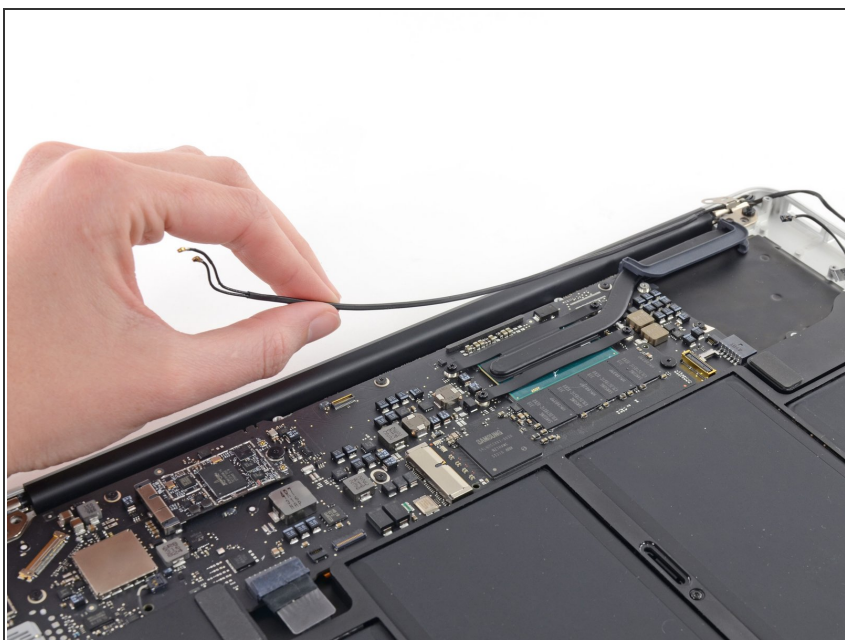
## Step 21



- Remove the inner four (two on each side) 5.6 mm T8 Torx screws securing the right and left display hinges to the upper case.

**i** Leaving the outer screws in place for now will aid in disassembly.

## Step 22



- Gently de-route the antenna cables out of the channel cut into the upper case.

## Step 23



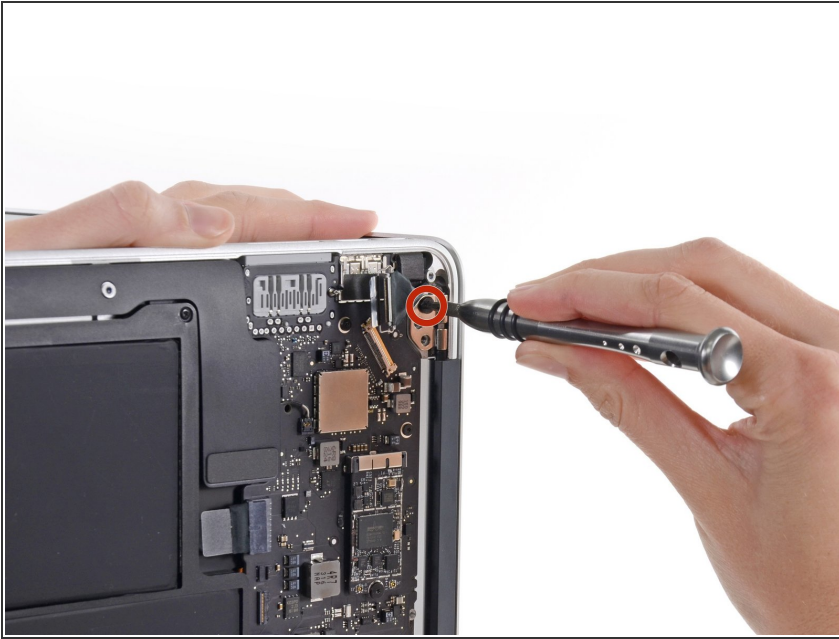
- ❗ Open the display so that it is perpendicular to the upper case and place it on a table as shown.

## Step 24



- While holding the Air steady, remove the remaining 5.6 mm T8 Torx screw from the left display bracket.

## Step 25



- ✦ Turn the computer onto its opposite edge so the right display screw is now easily accessible.
- ⓘ Before removing the last display screw, be sure to hold the display and upper case steady with your other hand. Failure to do so may allow the components to fall onto the table, causing potentially expensive damage.
- Remove the last 5.6 mm T8 Torx screw securing the display to the upper case.

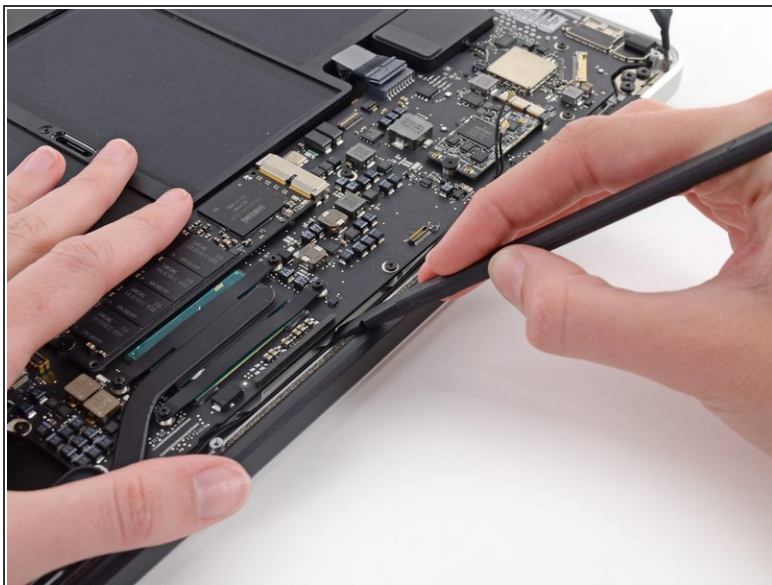
## Step 26



- Open the Air slightly to allow room for the hinges to slide out of their notches.
- Push the upper case slightly toward the display assembly, then push it back from the hinges.
- Once the two display hinges have cleared the upper case, remove the display and set it aside.



## Step 27



- ✦ During reassembly, use the flat end of a spudger to tuck the Wi-Fi/Bluetooth antenna back into its channel.

To reassemble your device, follow these instructions in reverse order.

Take your e-waste to an [R2 or e-Stewards certified recycler](#).

Repair didn't go as planned? Try some [basic troubleshooting](#), or ask our [Answers community](#) for help.