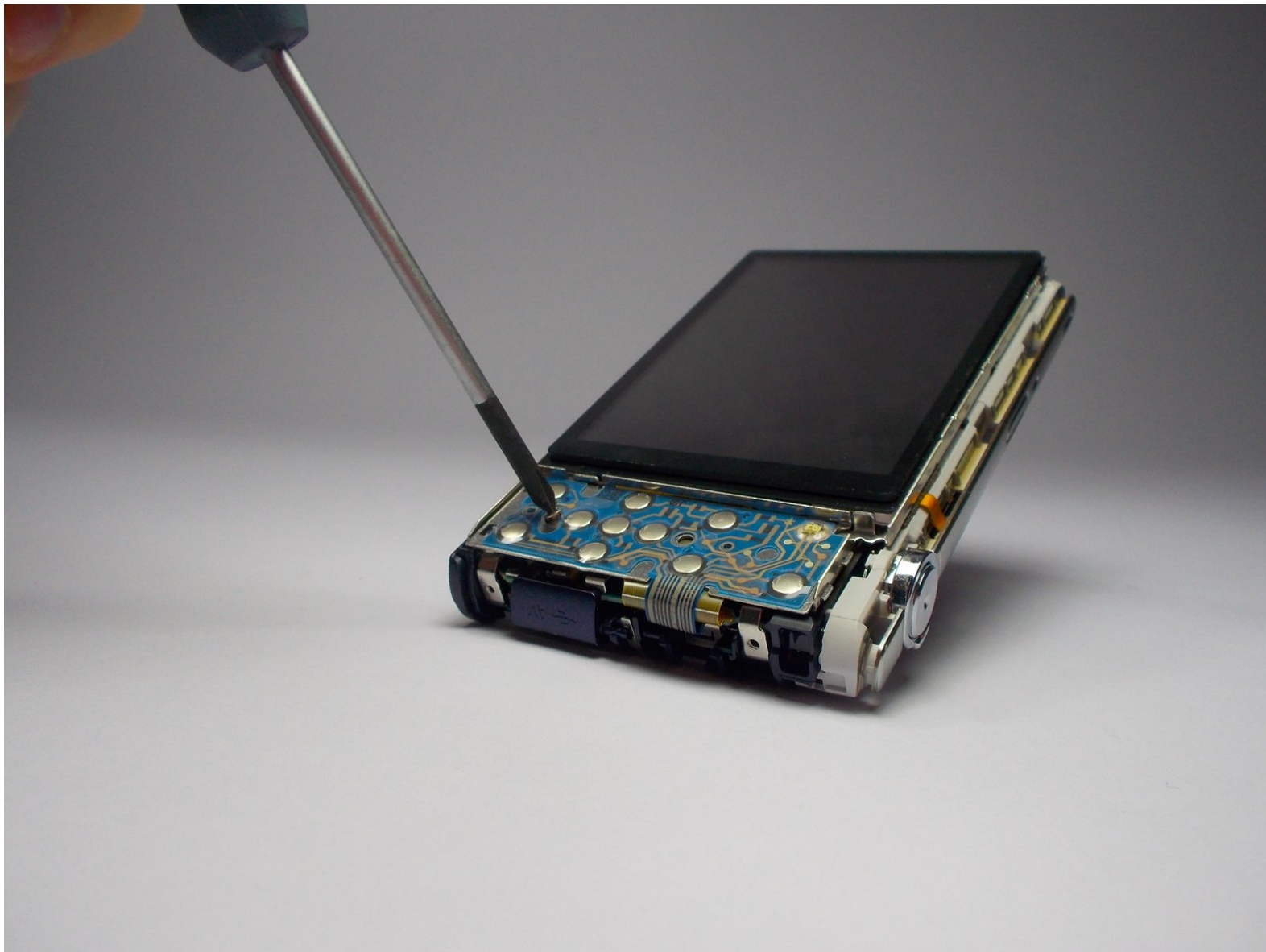




Samsung ST150F Rear Panel Control Board Replacement

Having an issue to where your device is not recognizing the buttons being pushed? Follow this guide to replace the Rear Panel Control Board.

Written By: Matthew Eaton

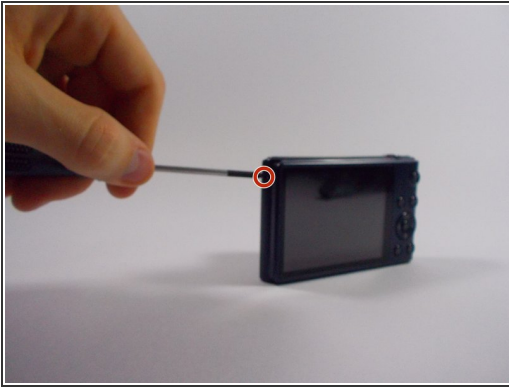




TOOLS:

- [Phillips #0 Screwdriver](#) (1)
 - [Spudger](#) (1)
-

Step 1 — Outer Casing



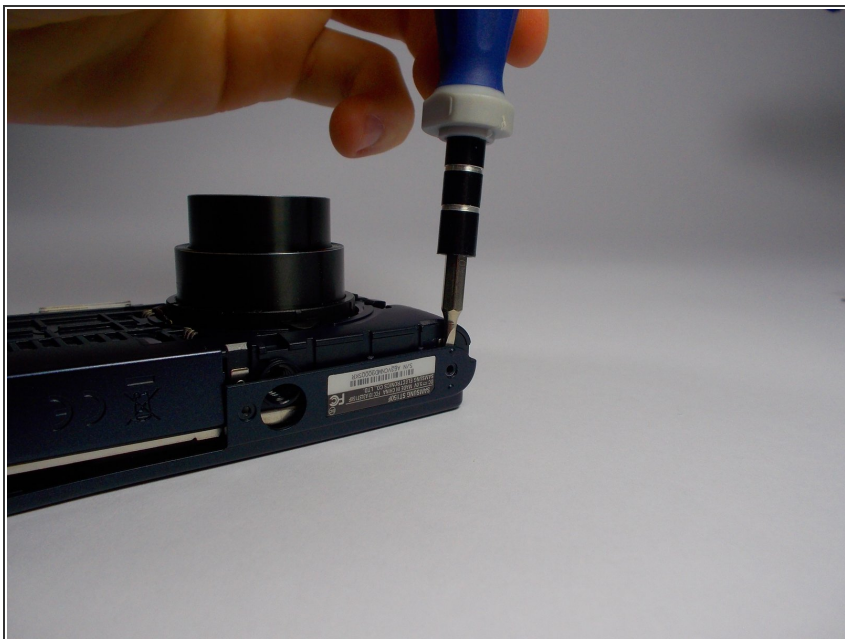
- Remove these screws from the camera using a phillips head screwdriver.

Step 2



- Lay the camera down on the table and remove the metal shell from the front.

Step 3



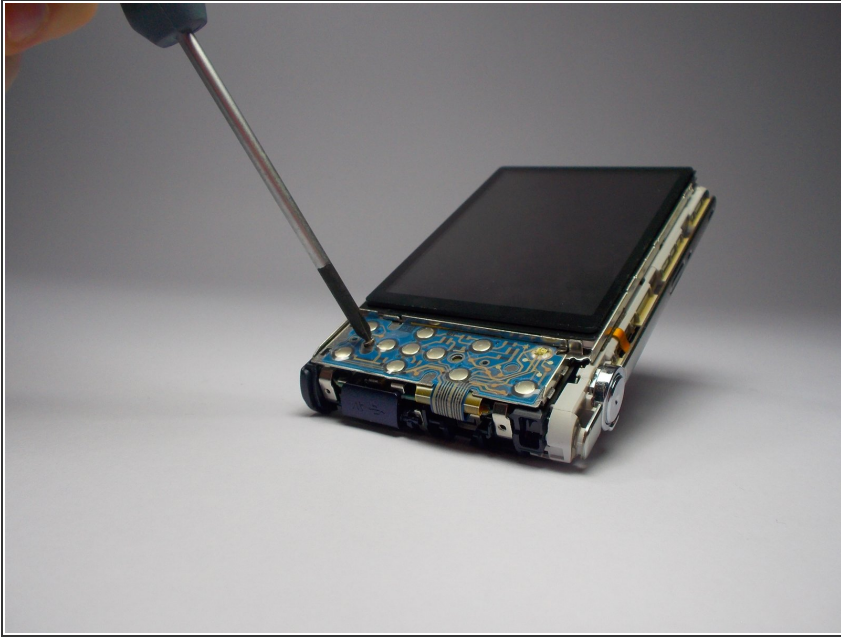
- Wedge a spudger/flathead screwdriver inside of the shell where the screws were to pry the shell off of the back.

Step 4



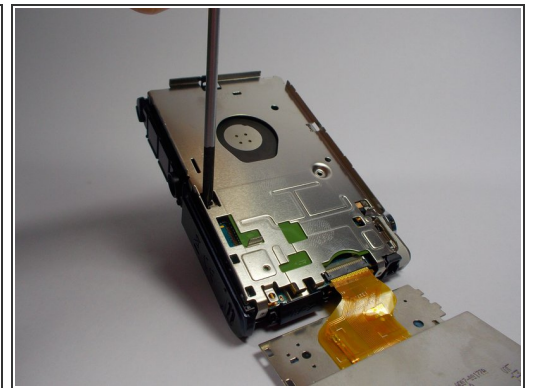
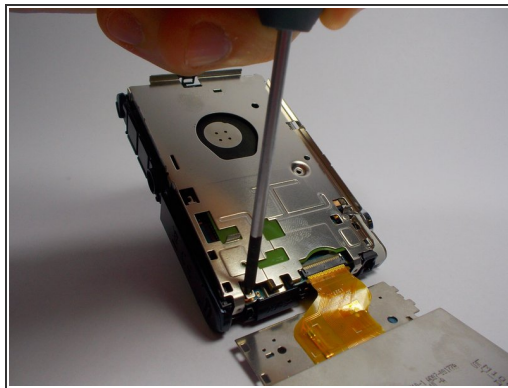
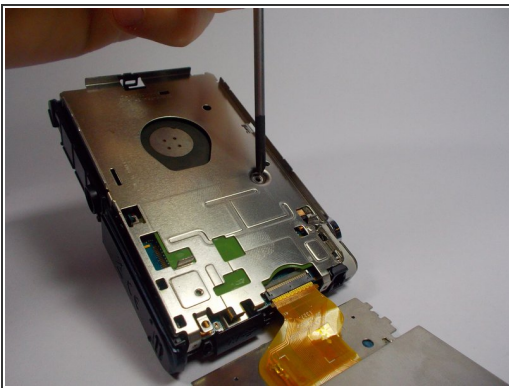
- Remove the shell the from the back of the camera.

Step 5 — Rear Panel Control Board



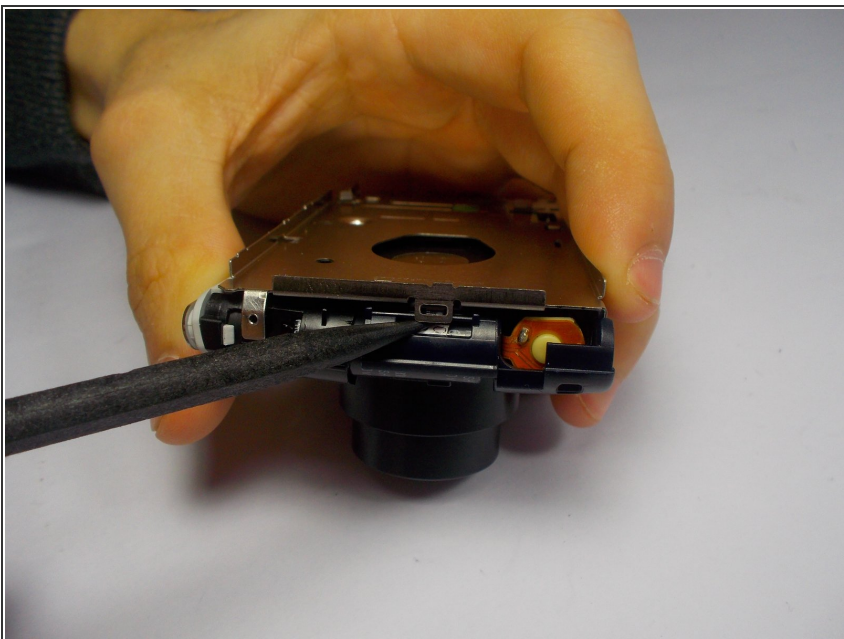
- Remove the Phillips head screw from the rear panel control board to reveal the LCD's connection to the motherboard.

Step 6



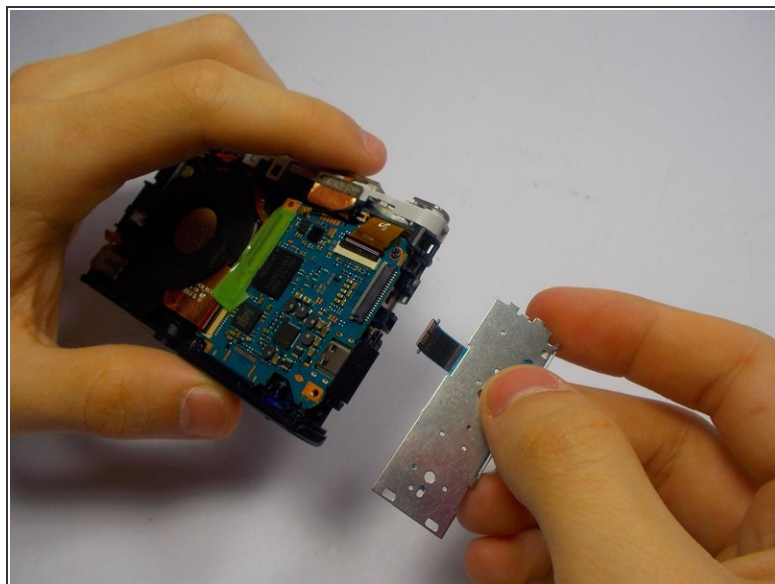
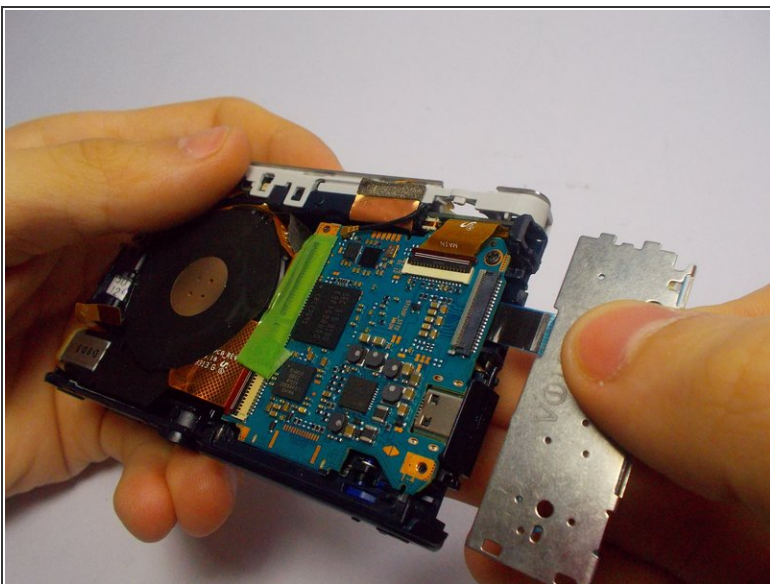
- Remove the Phillips head screws from the metal back plate.

Step 7



- Use the spudger to life the tab on the side of the metal plate.

Step 8



- Pull gently on the control panel to remove it from the motherboard.

To reassemble your device, follow these instructions in reverse order.